

Kunsthaus Bregenz:

Architect: Peter Zumthor

Designed 1989 - 1993

Completed 1997

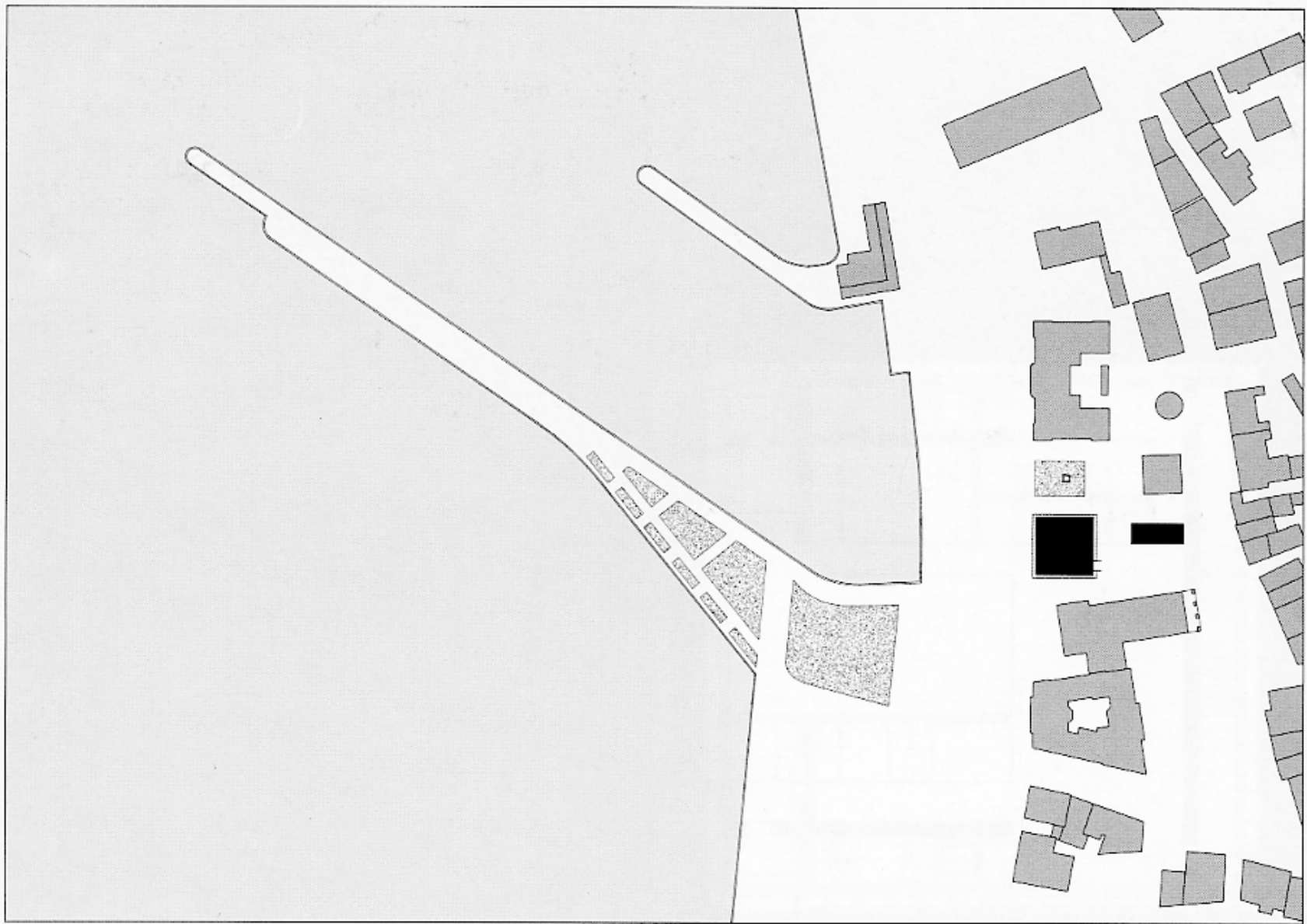
30,785 square feet

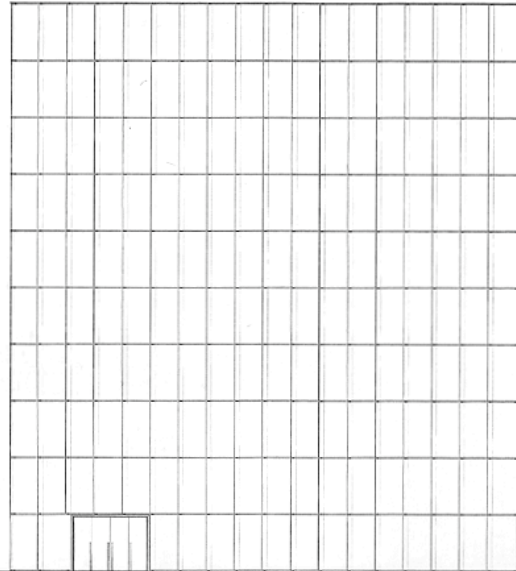
87 feet square, 7,582 s.f./fl. (gross)

31.5 million Dm to build or
approx \$1,243/s.f.

Clad with 712 glass shingles 5'-8" x 9'-8"

See more: <http://www.kunsthaus-bregenz.at/ehhtml/ewelcome.html>

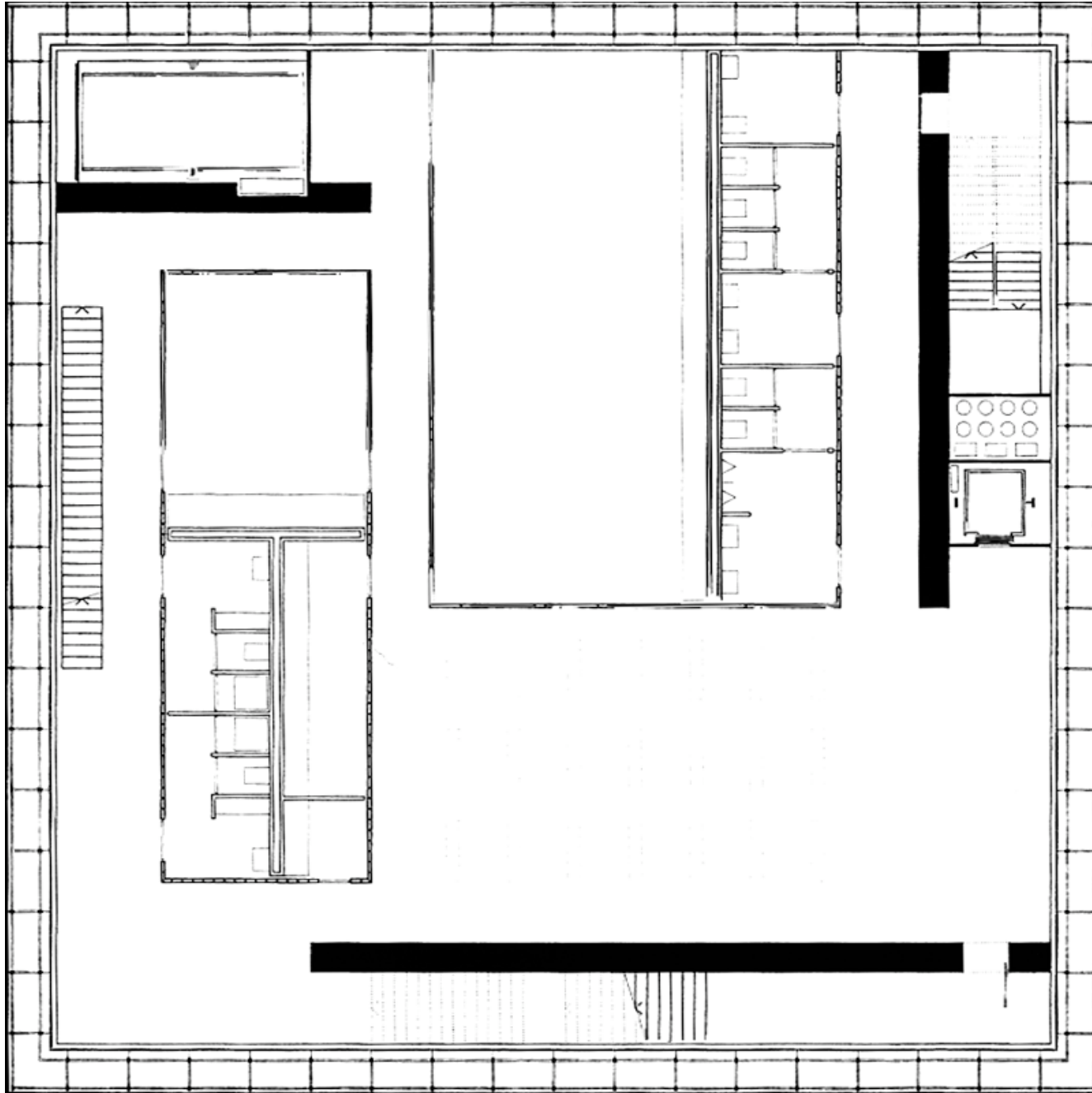




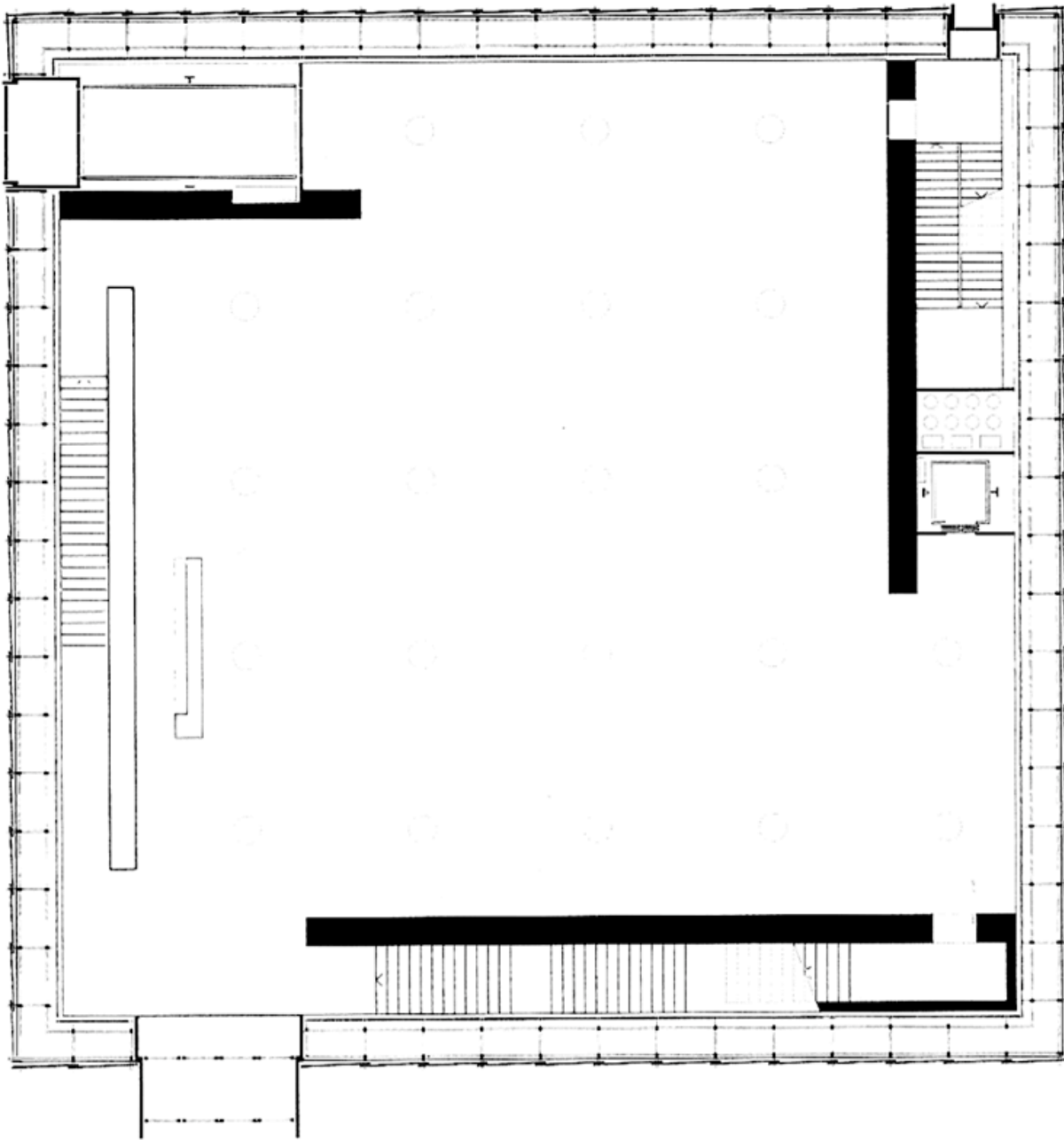




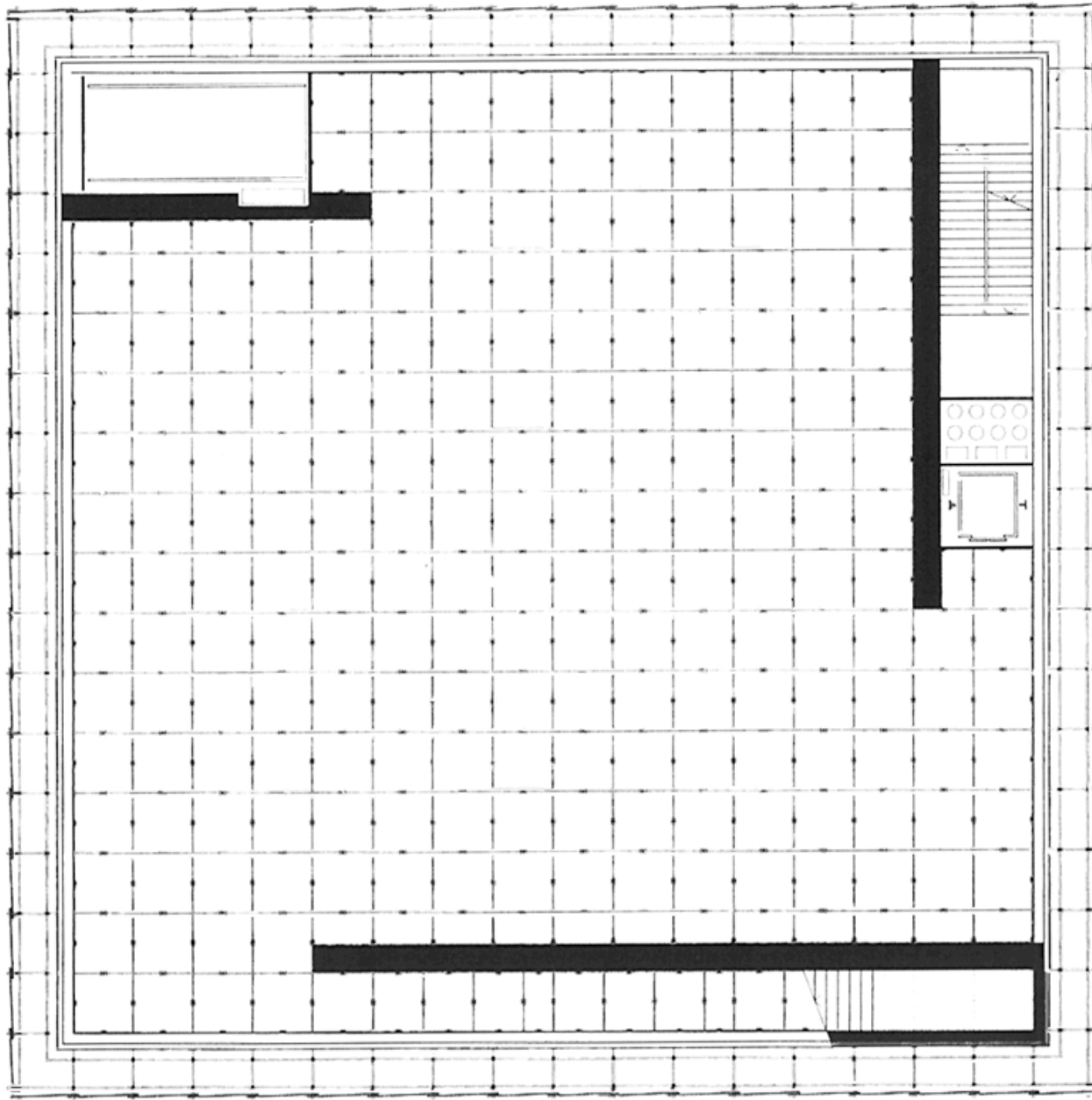




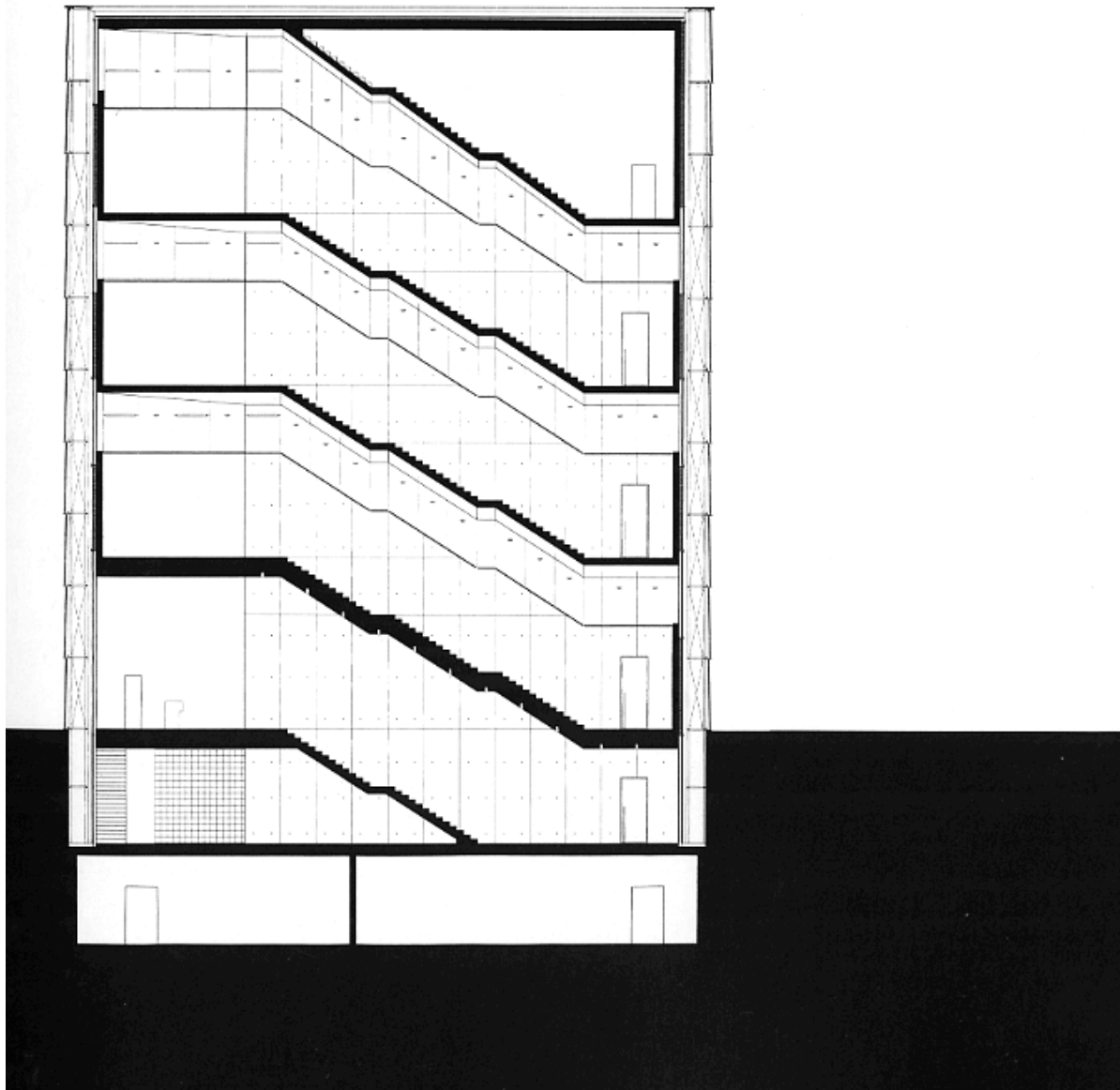
First Basement
Level



Ground Level



Upper Gallery
Levels







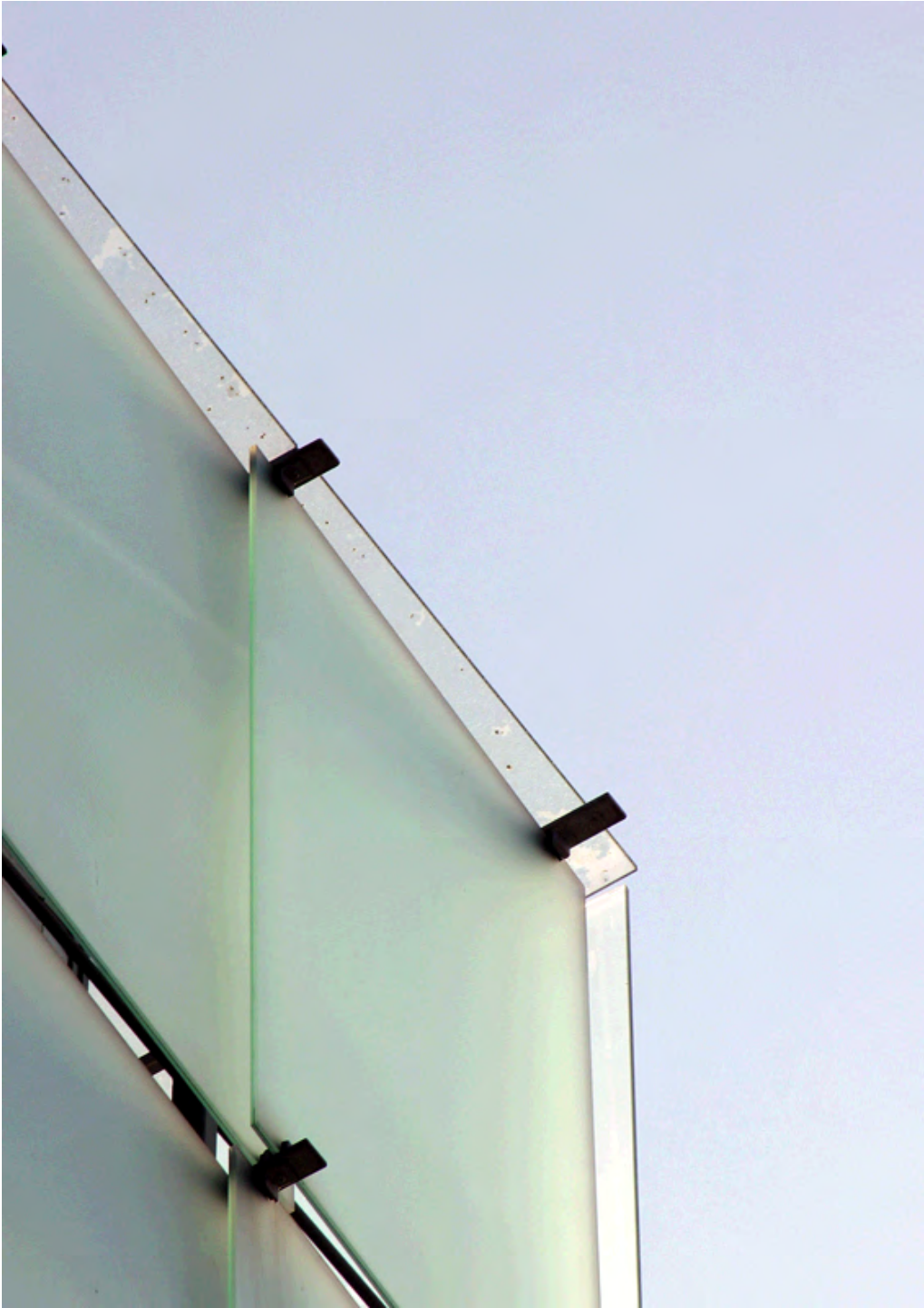




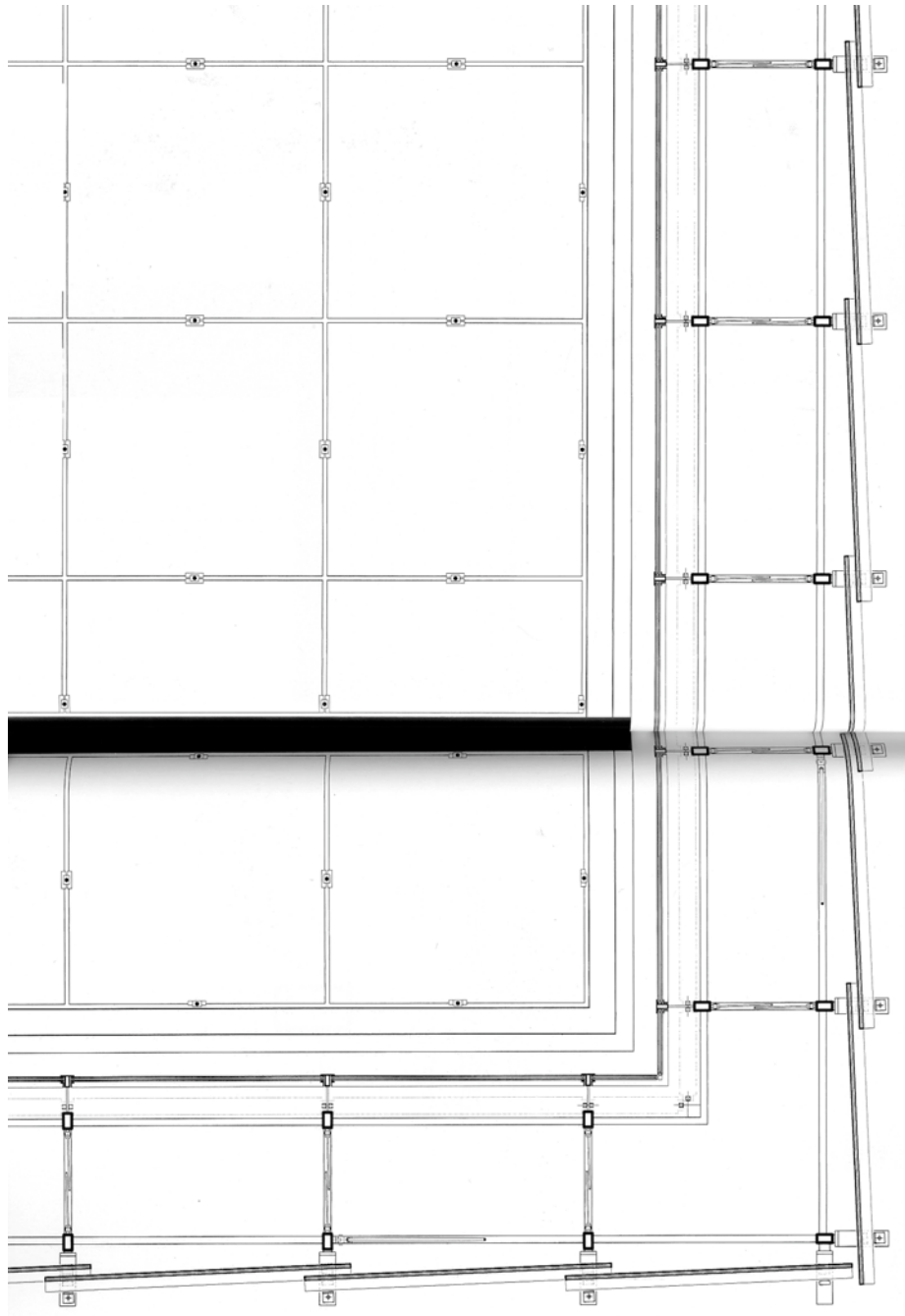






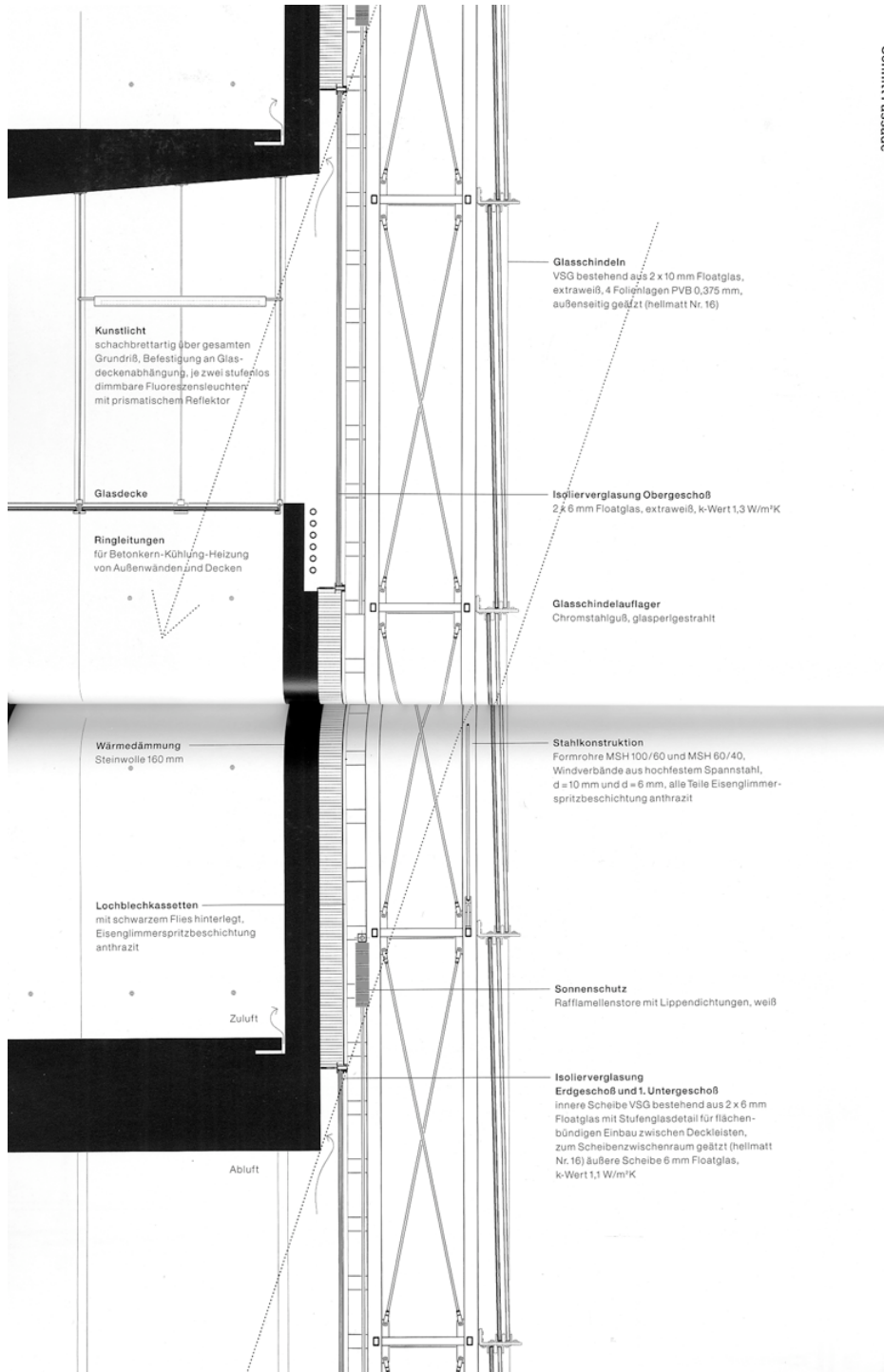








Schnitt Fassade









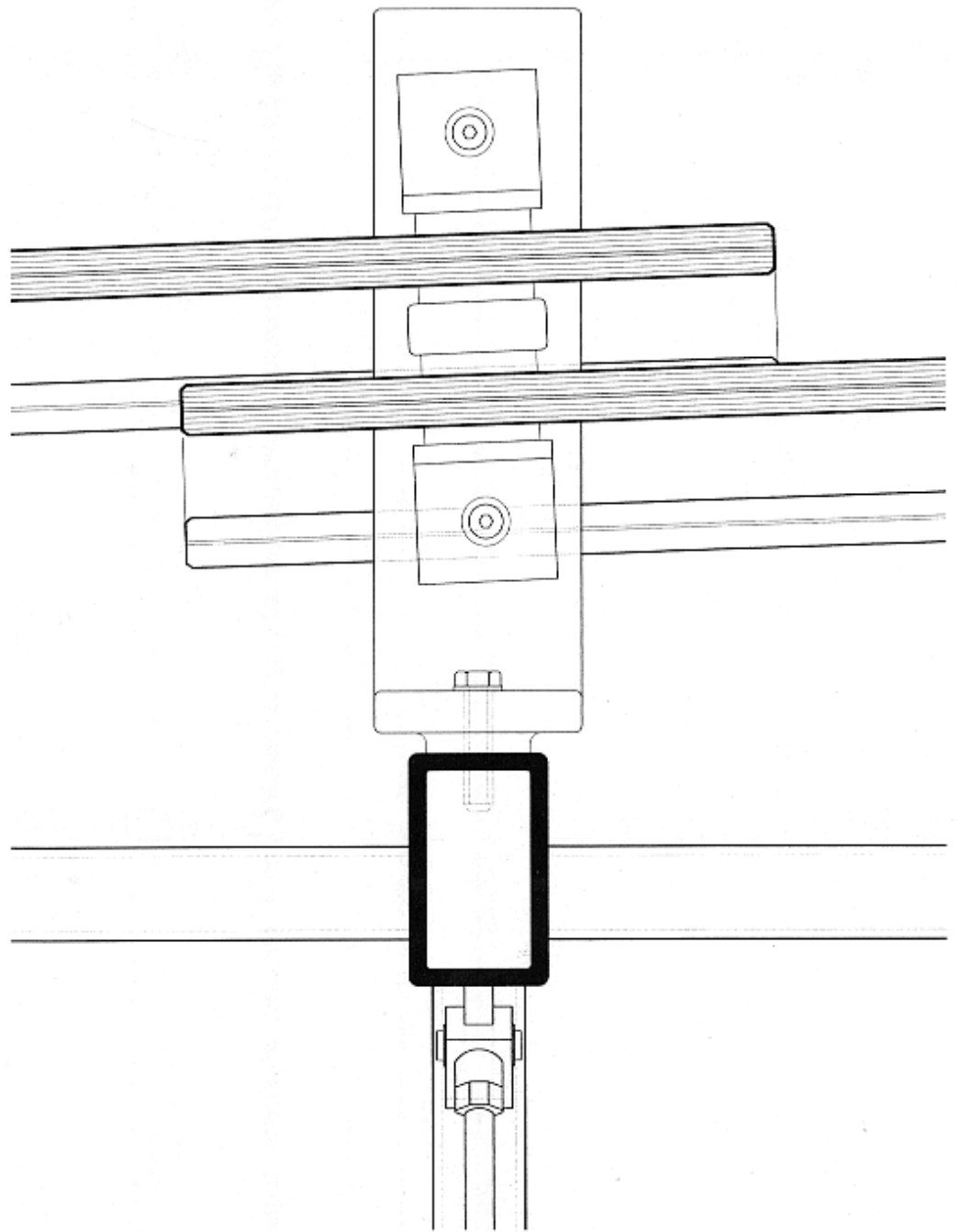


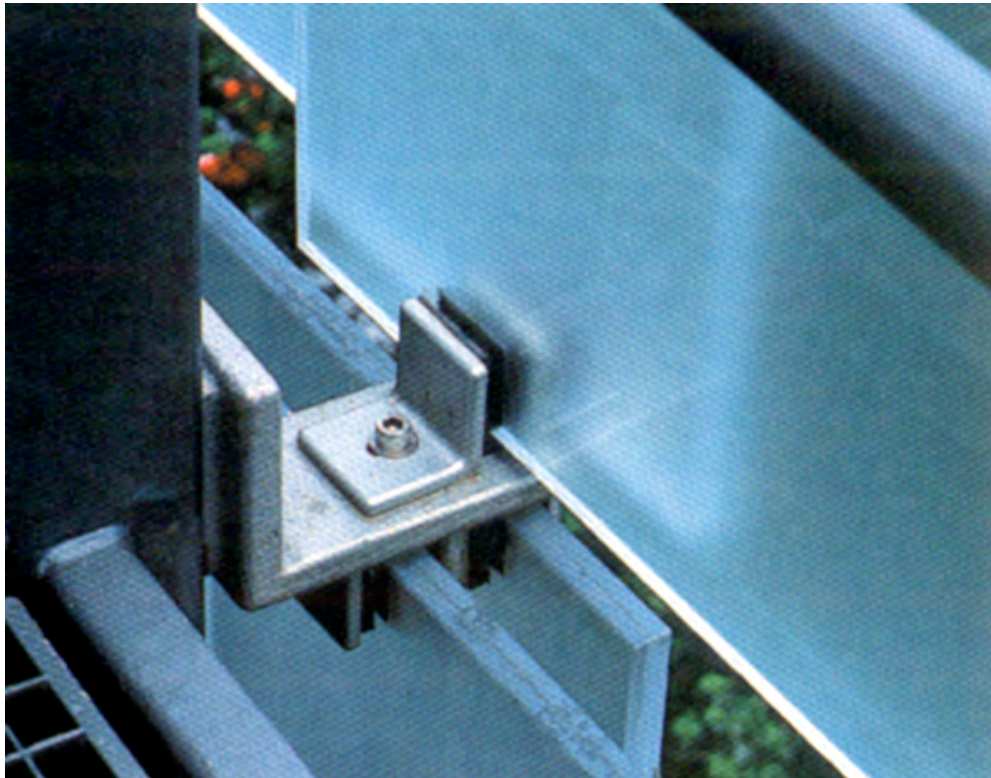


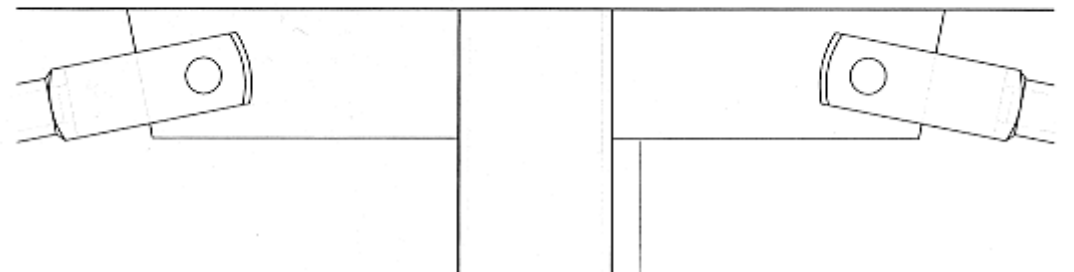
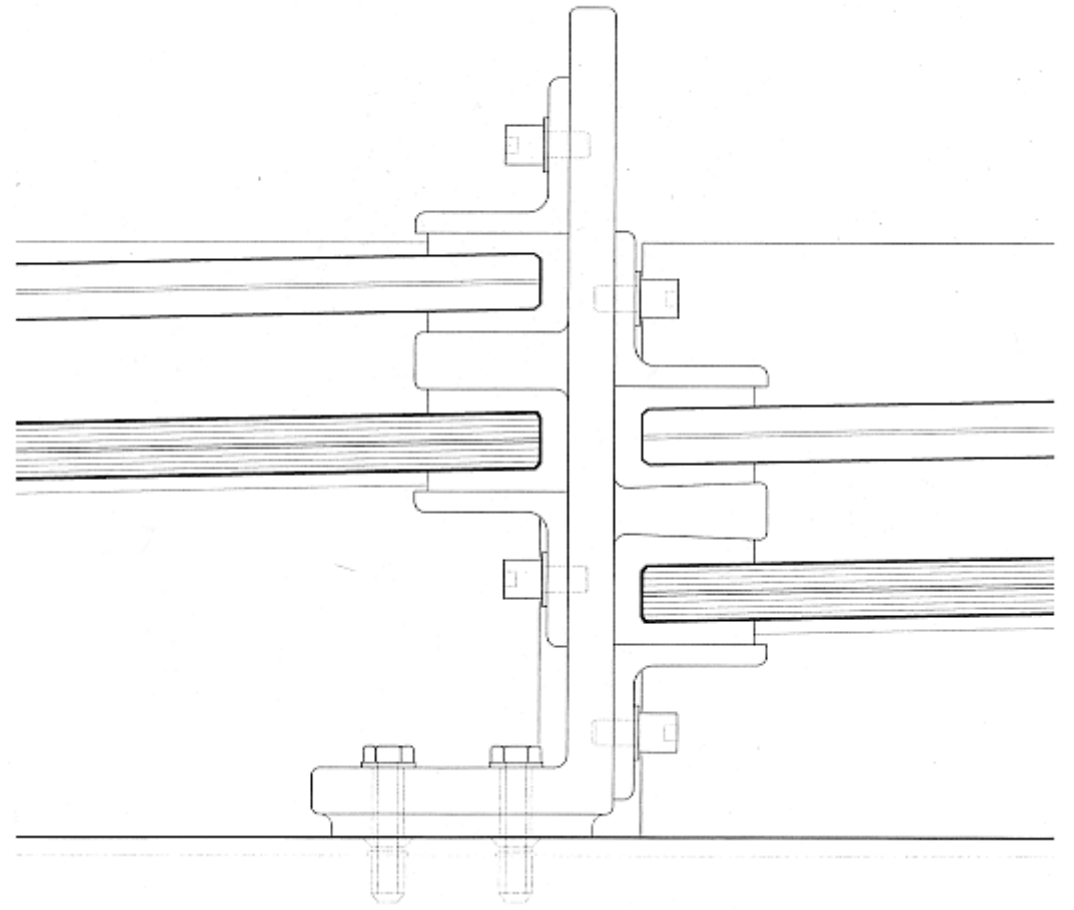




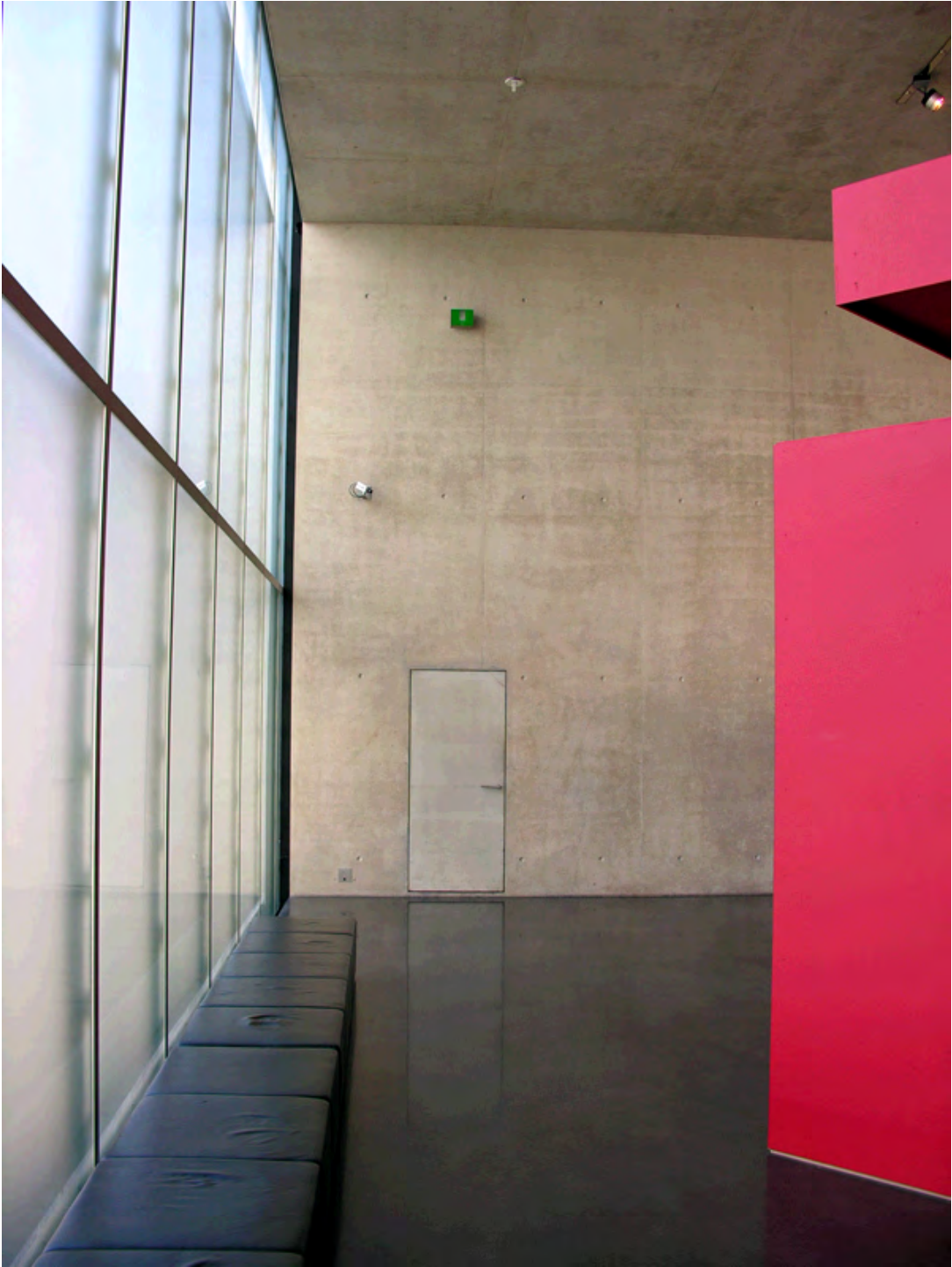




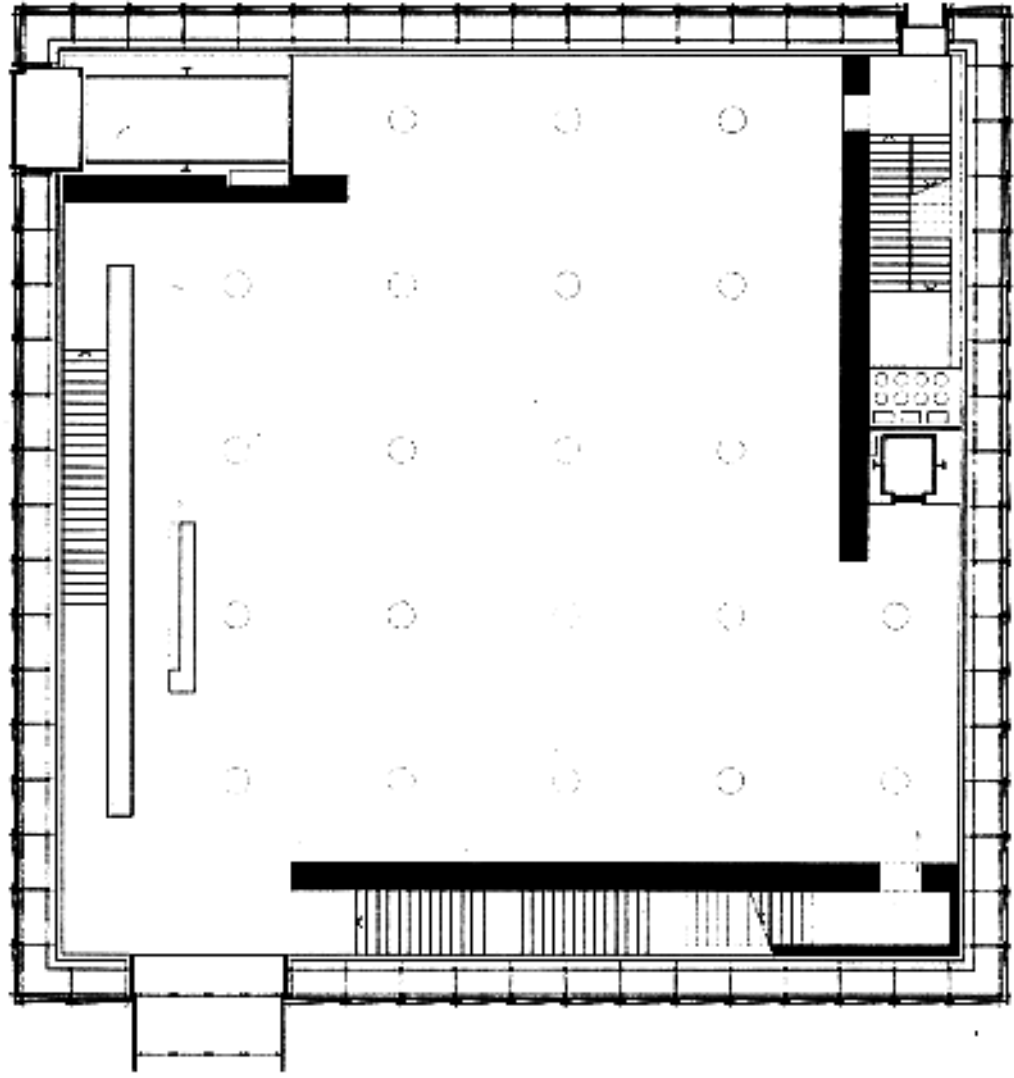








0 10

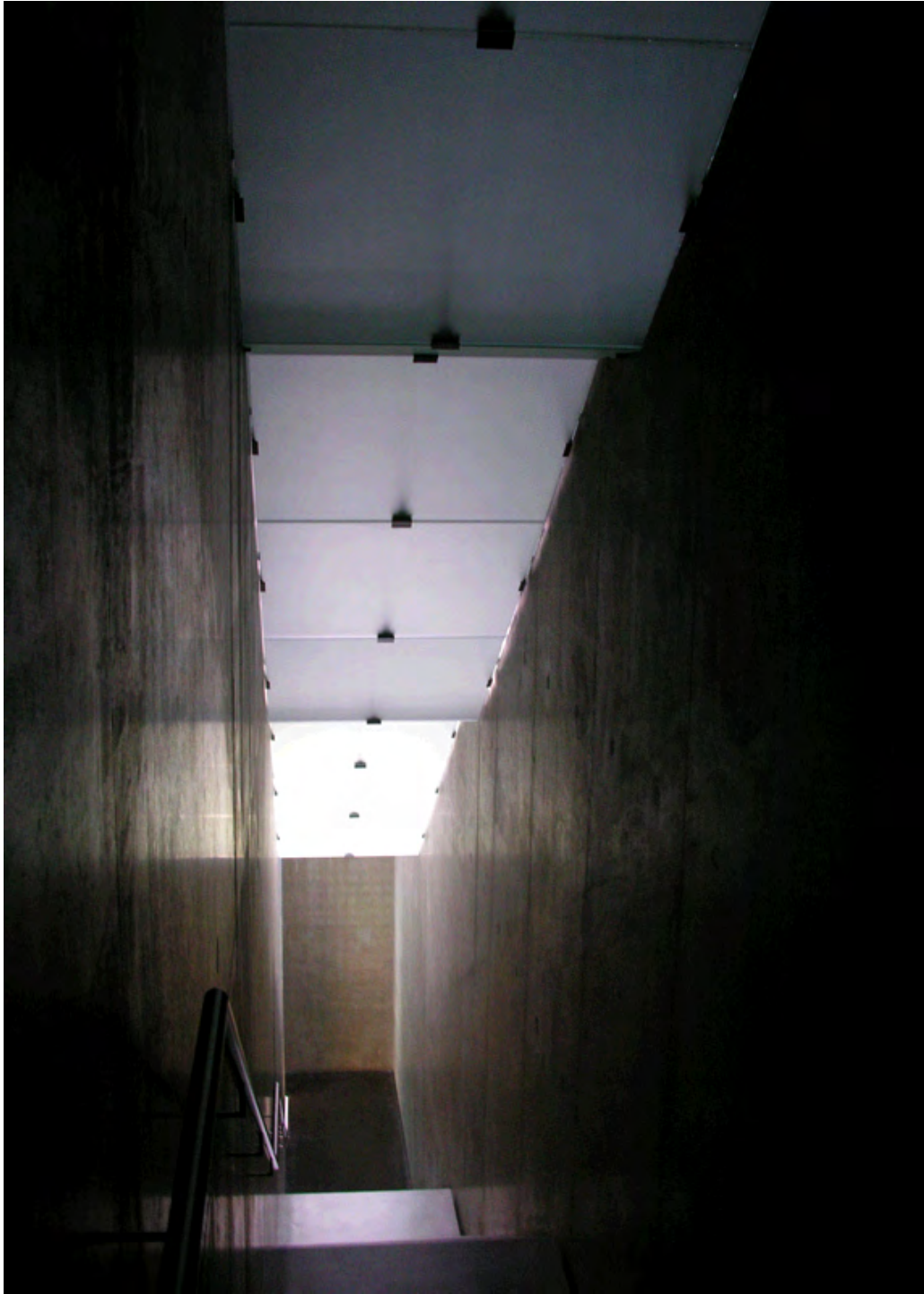




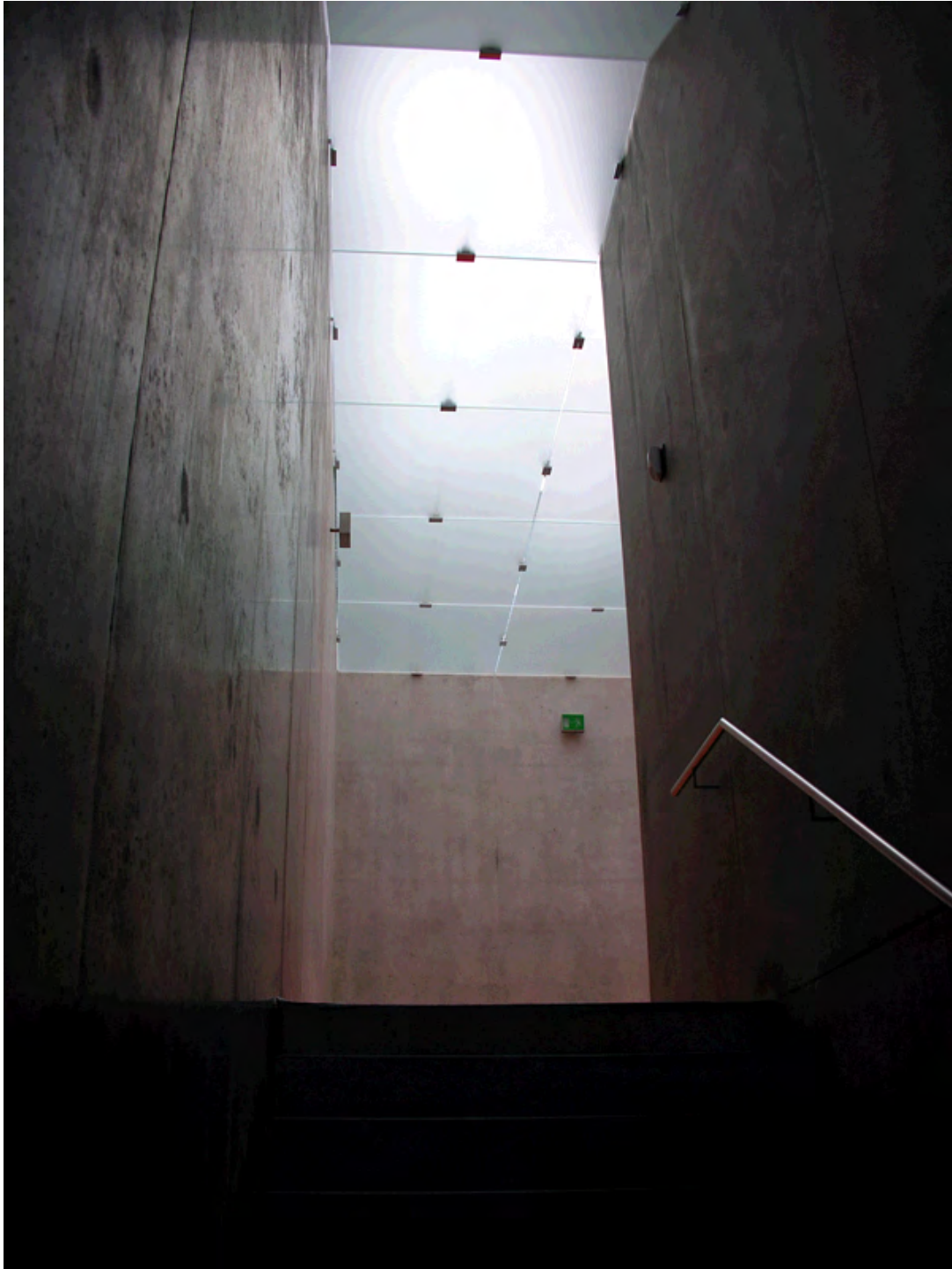




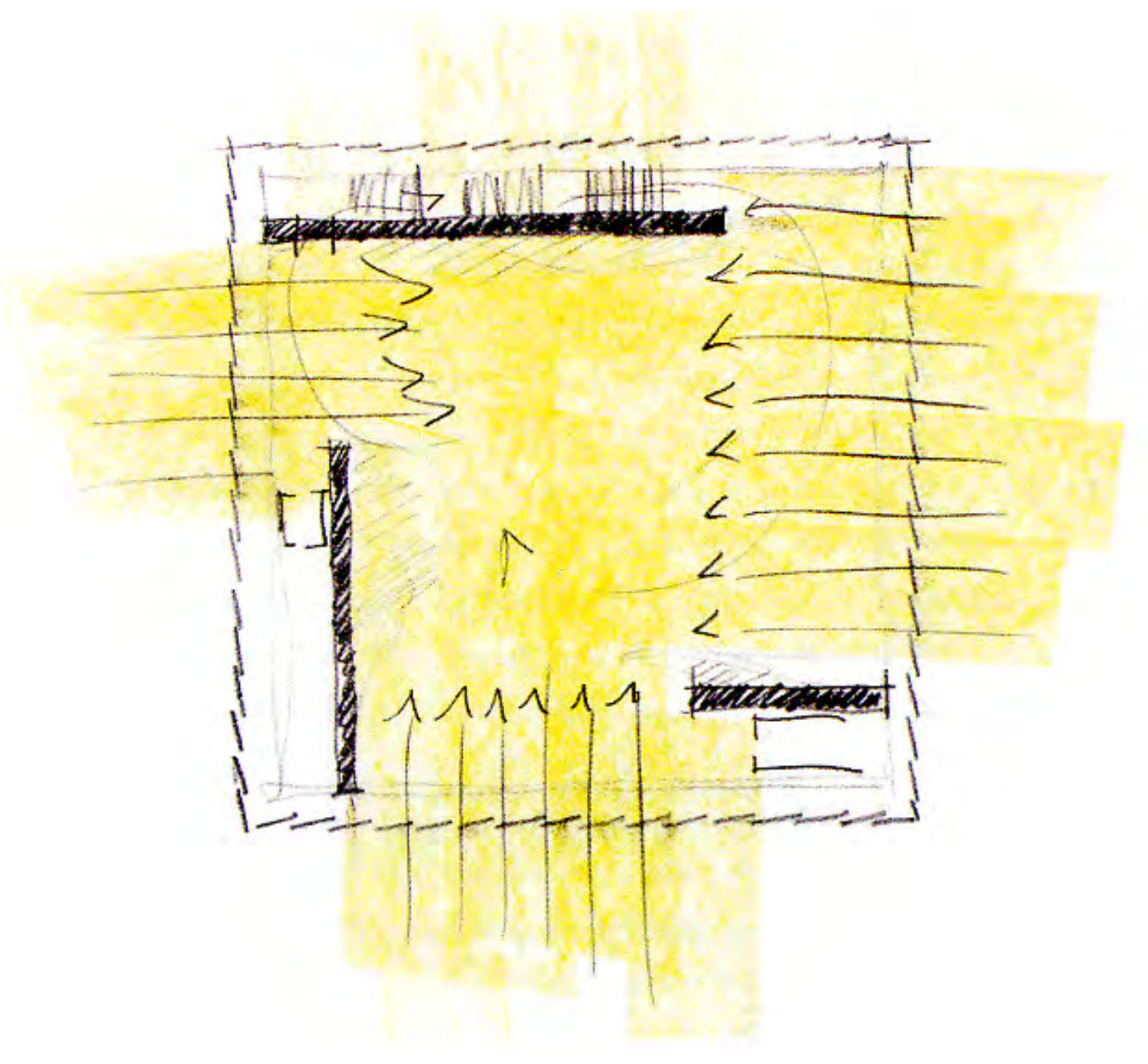


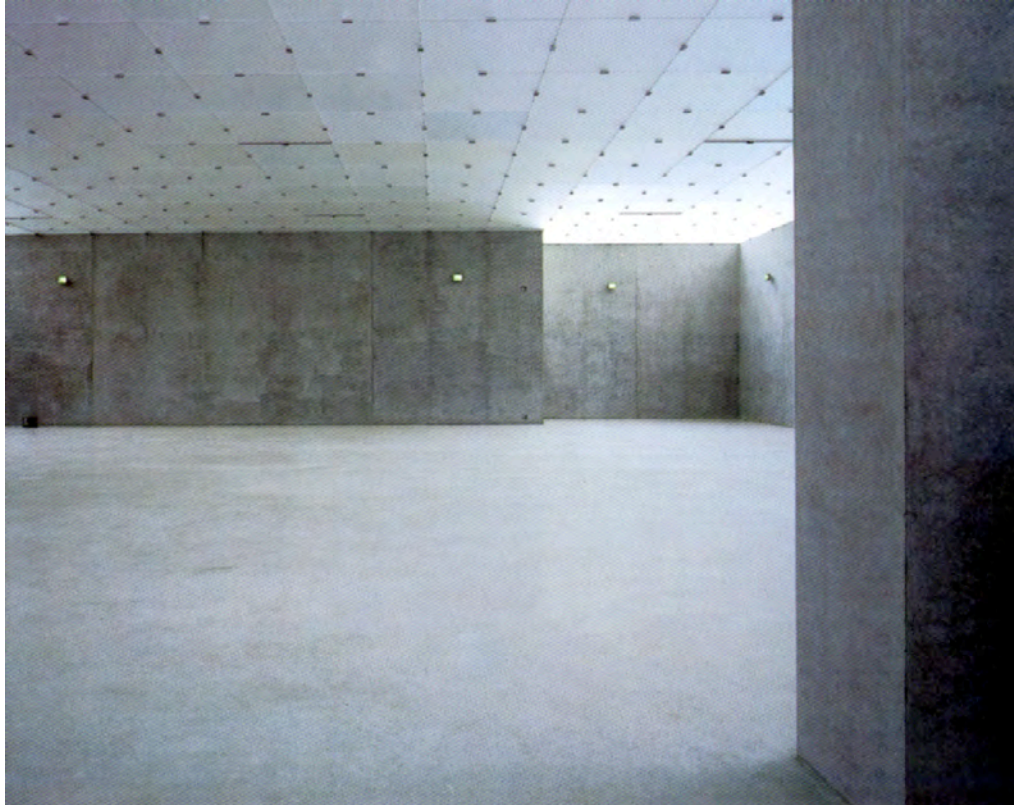


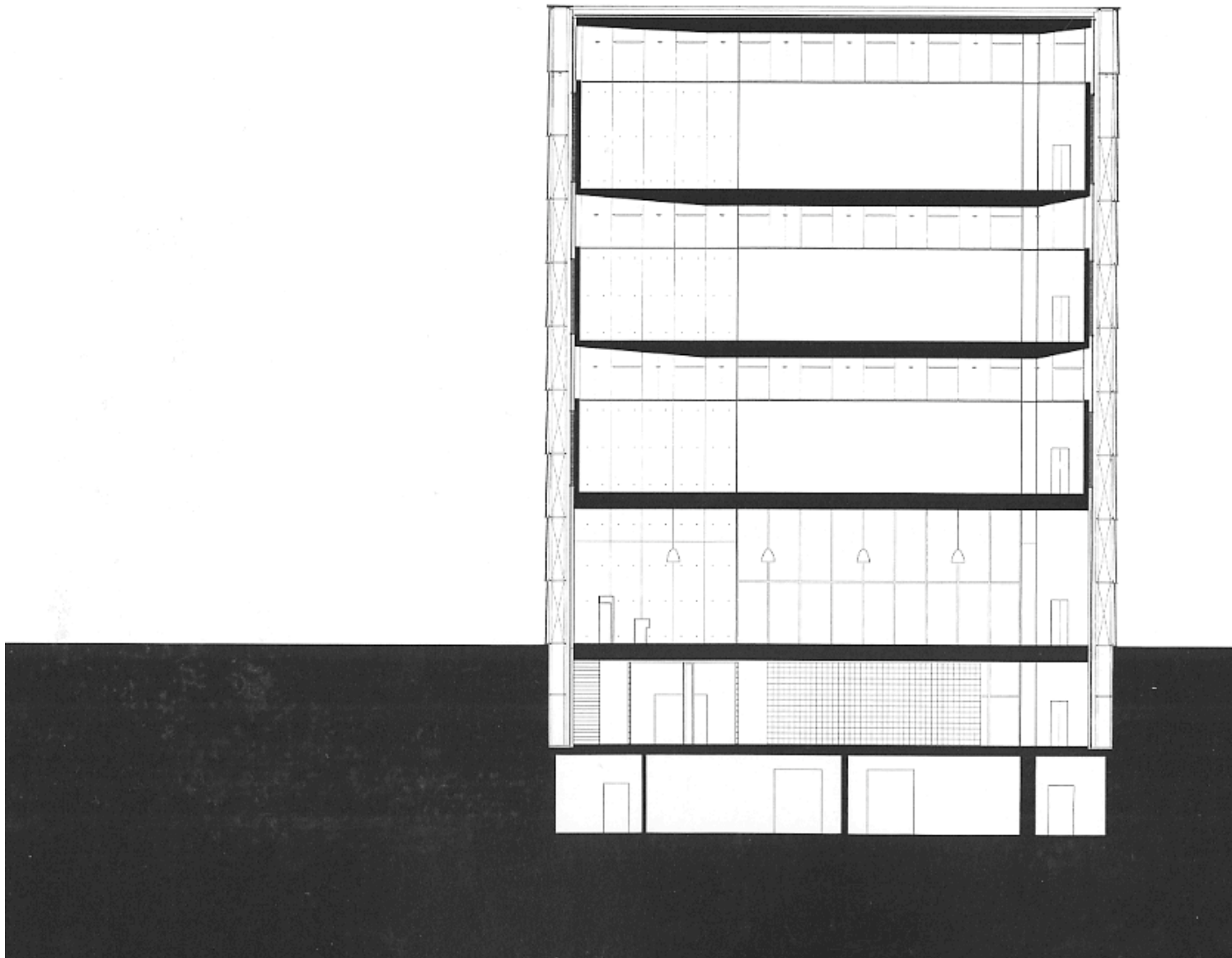


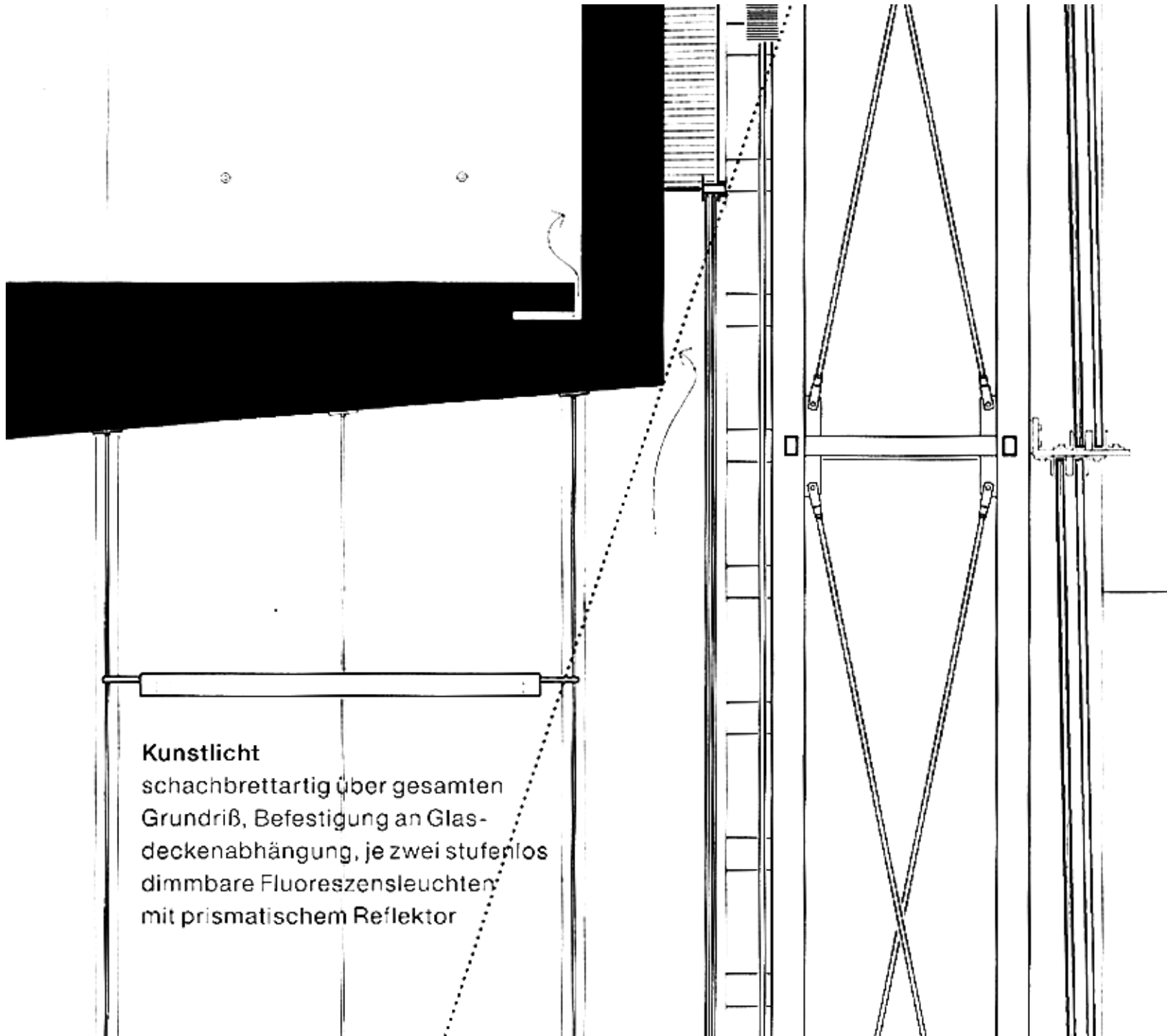




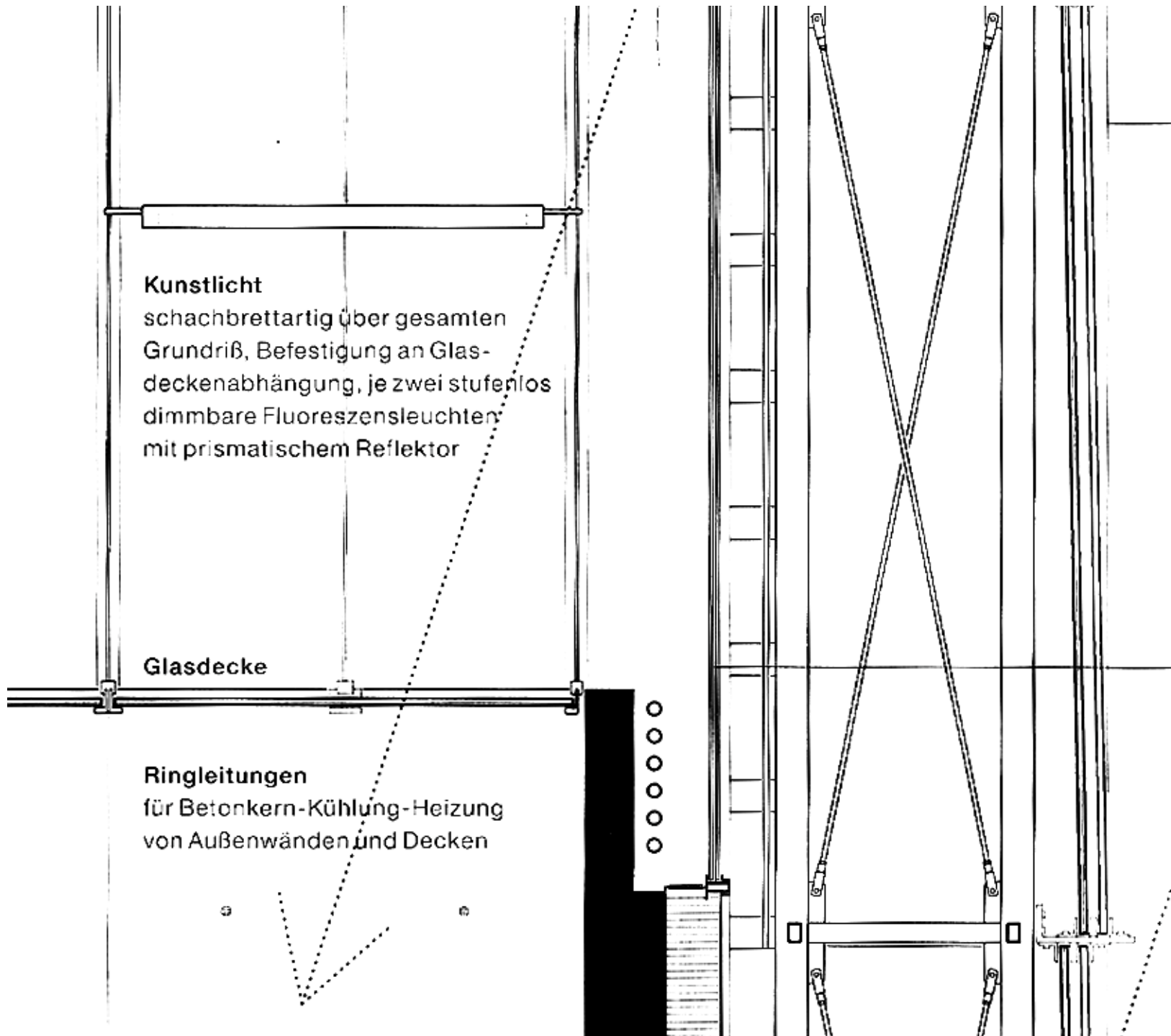








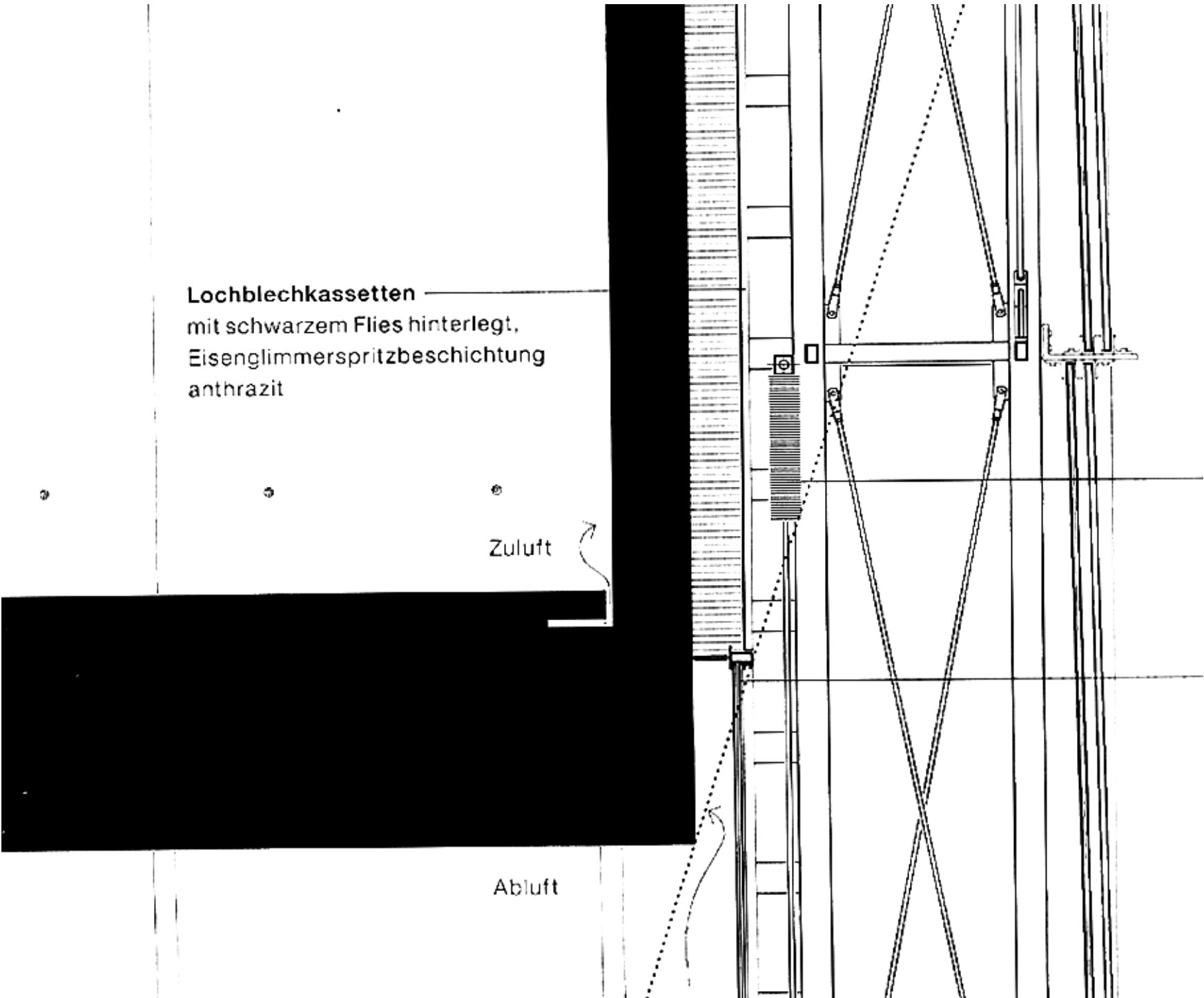
Kunstlicht
schachbrettartig über gesamten
Grundriß, Befestigung an Glas-
deckenabhängung, je zwei stufenlos
dimmbare Fluoreszenzleuchten
mit prismatischem Reflektor

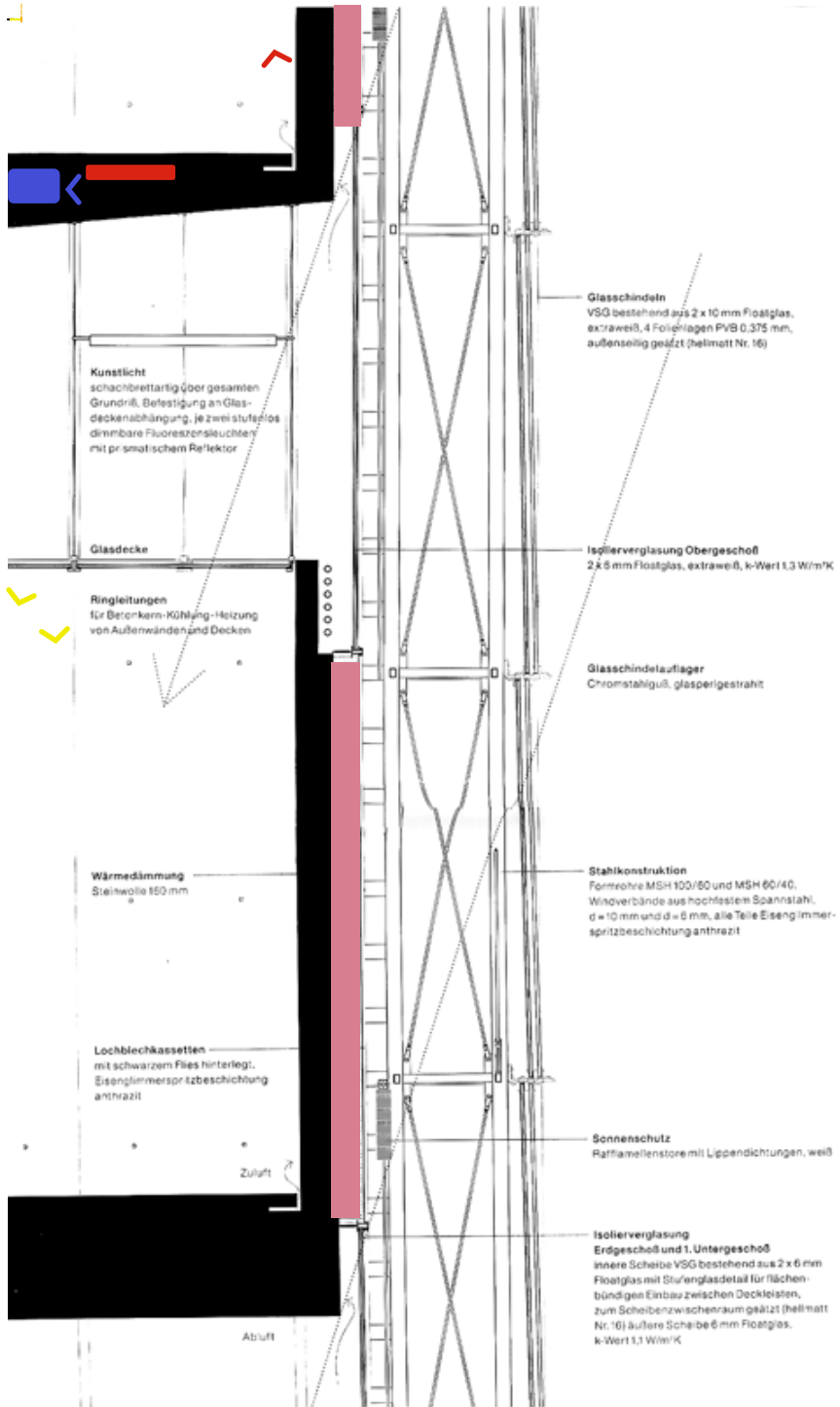


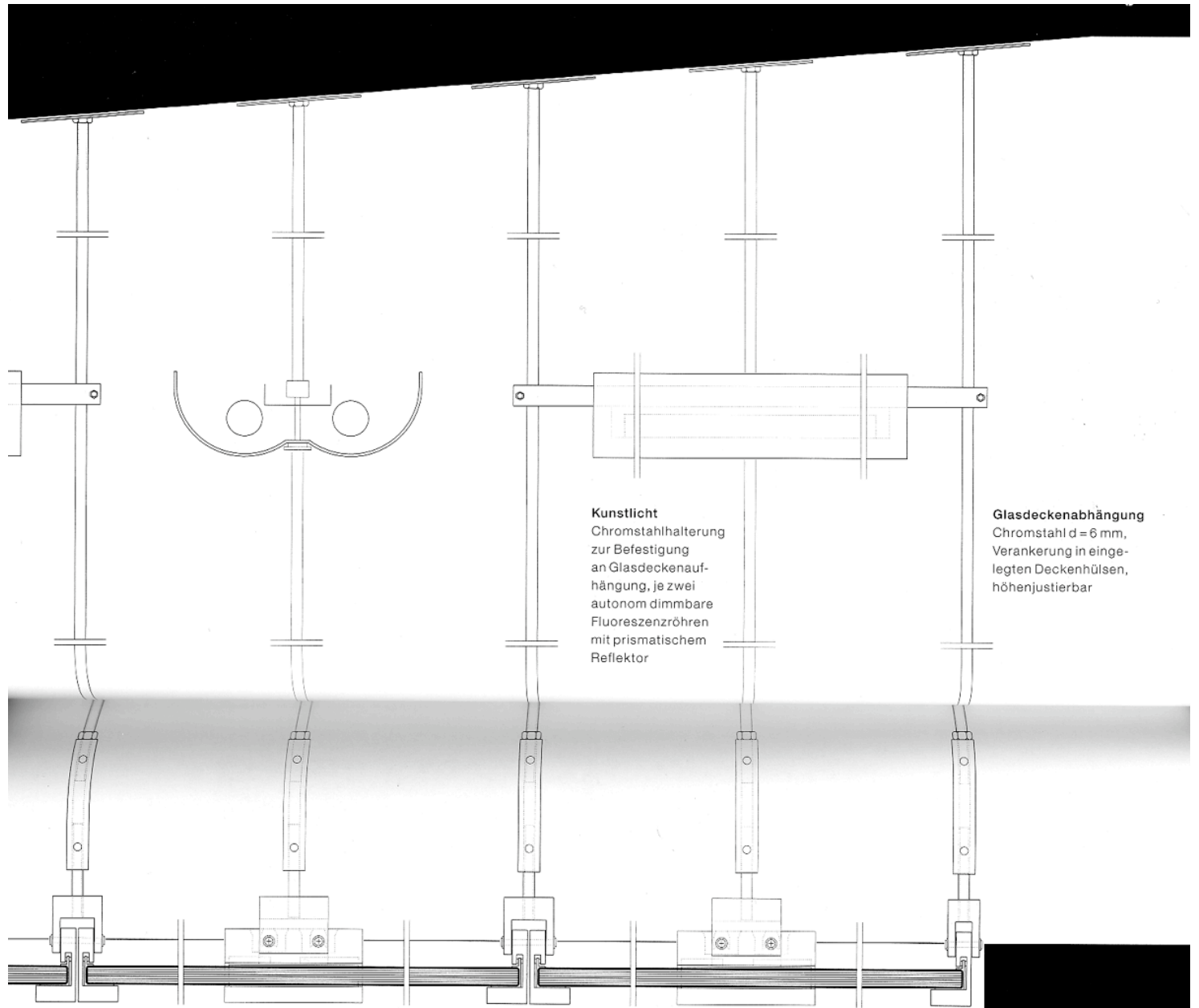
Lochblechkassetten
mit schwarzem Flies hinterlegt,
Eisenglimmerspritzbeschichtung
anthrazit

Zuluft

Abluft





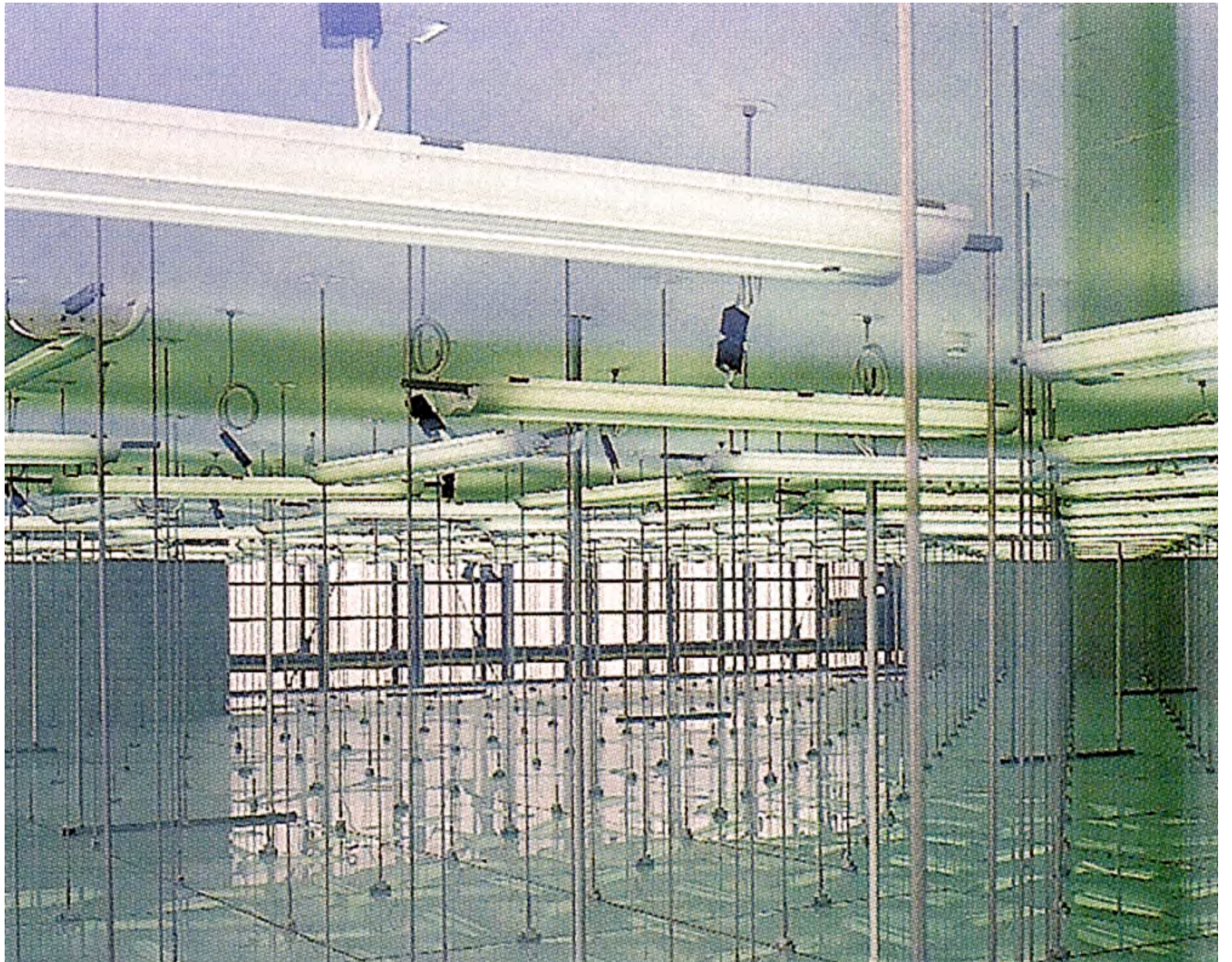


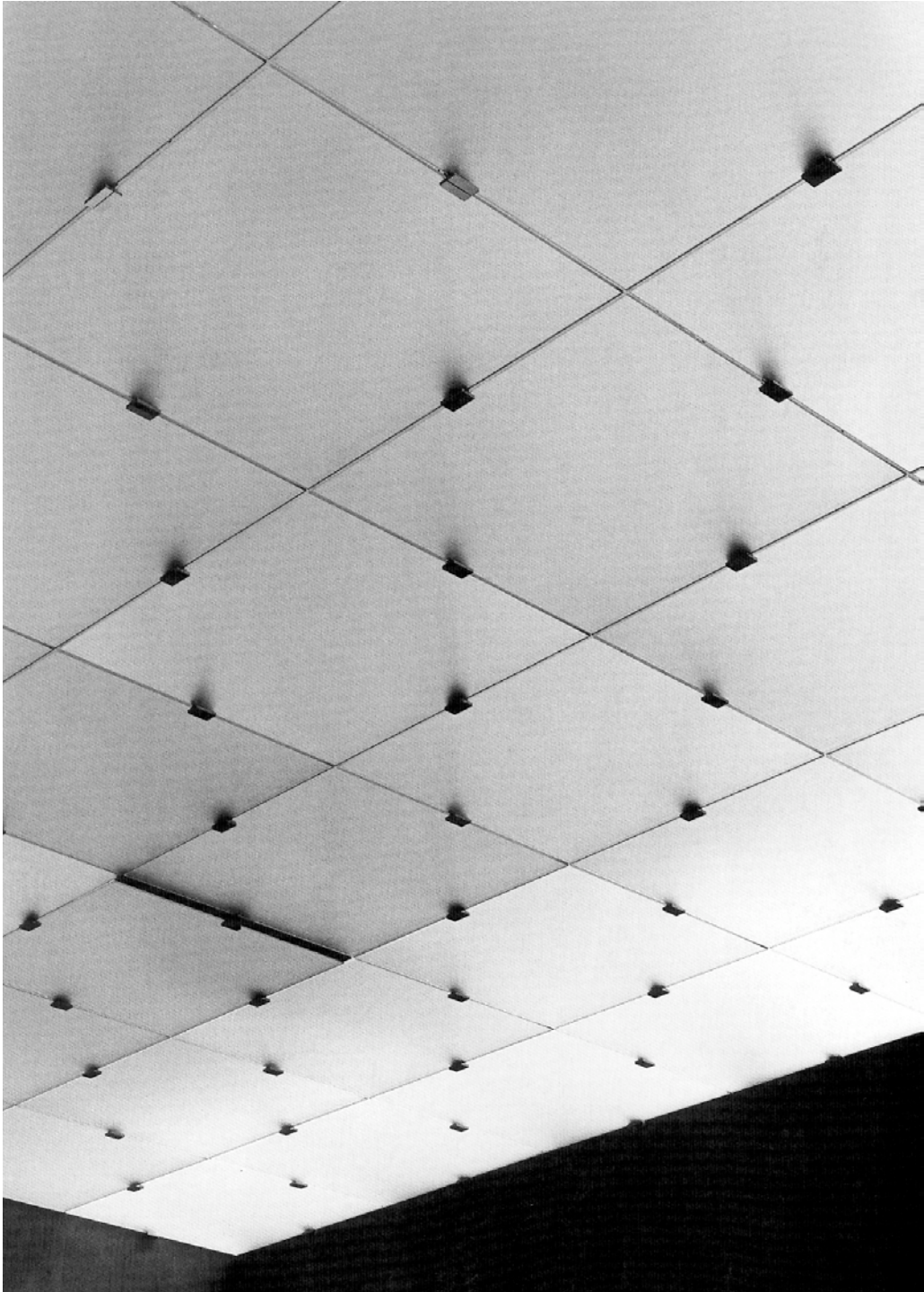
Kunstlicht
Chromstahlhalterung zur Befestigung an Glasdeckenaufhängung, je zwei autonom dimmbare Fluoreszenzröhren mit prismatischem Reflektor

Glasdeckenabhängung
Chromstahl d = 6 mm, Verankerung in eingelegten Deckenhülsen, höhenjustierbar

Glasdeckenaufleger
Chromstahlfrästeile, hochglanzpoliert, jedes Glas mit vierfacher punktueller Auflage zum Ausklinken

Glasdecke
VSG bestehend aus 2 x 6 mm Floatglas, extraweiß, 2 Folienlagen PVB 0,375 mm, raumseitig geätzt (hellmatt Nr. 16)





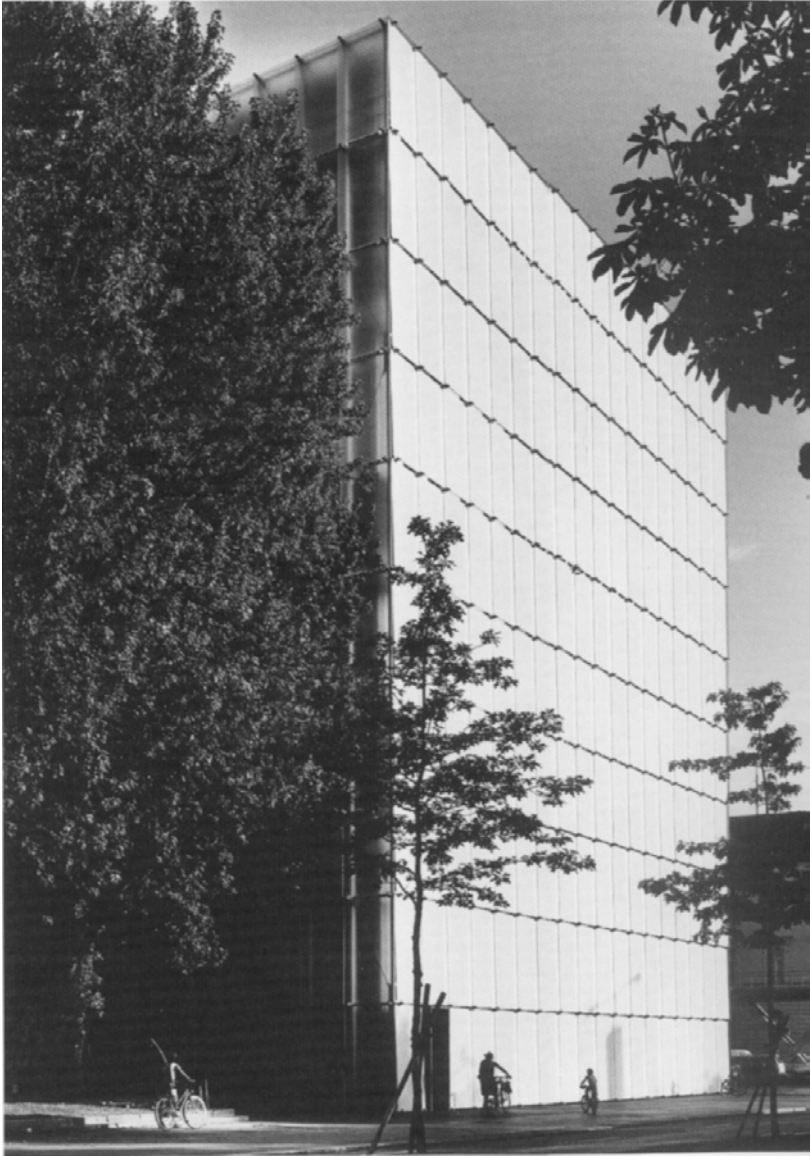
















↑ P Halen Pfänderb
→ P Rathaus
Krone
Bodensee
Hessen