

Diagrammed Concepts

Showing where
it comes from

A diagram is most successful when it is simple. The goal is to communicate a concept clearly and quickly to the viewer. Some things to consider when drawing:

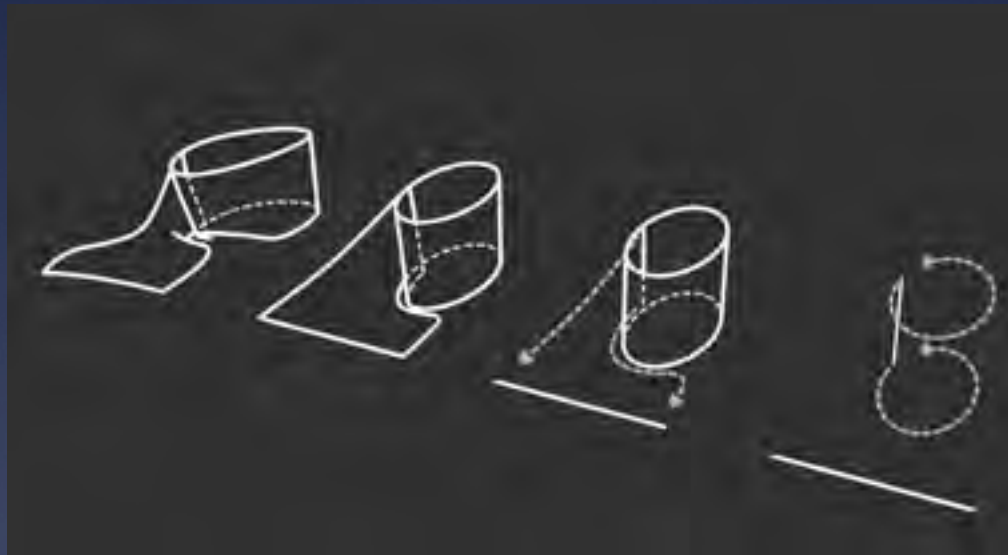
1. Hard line drawings: diagrams are abstract, that does not mean sketched. Making a clean drawing will help keep the diagram clear.

2. Develop in Series: often your ideas about site or program analysis are too complex to fit on one diagram. Try breaking out your ideas into separate drawings.

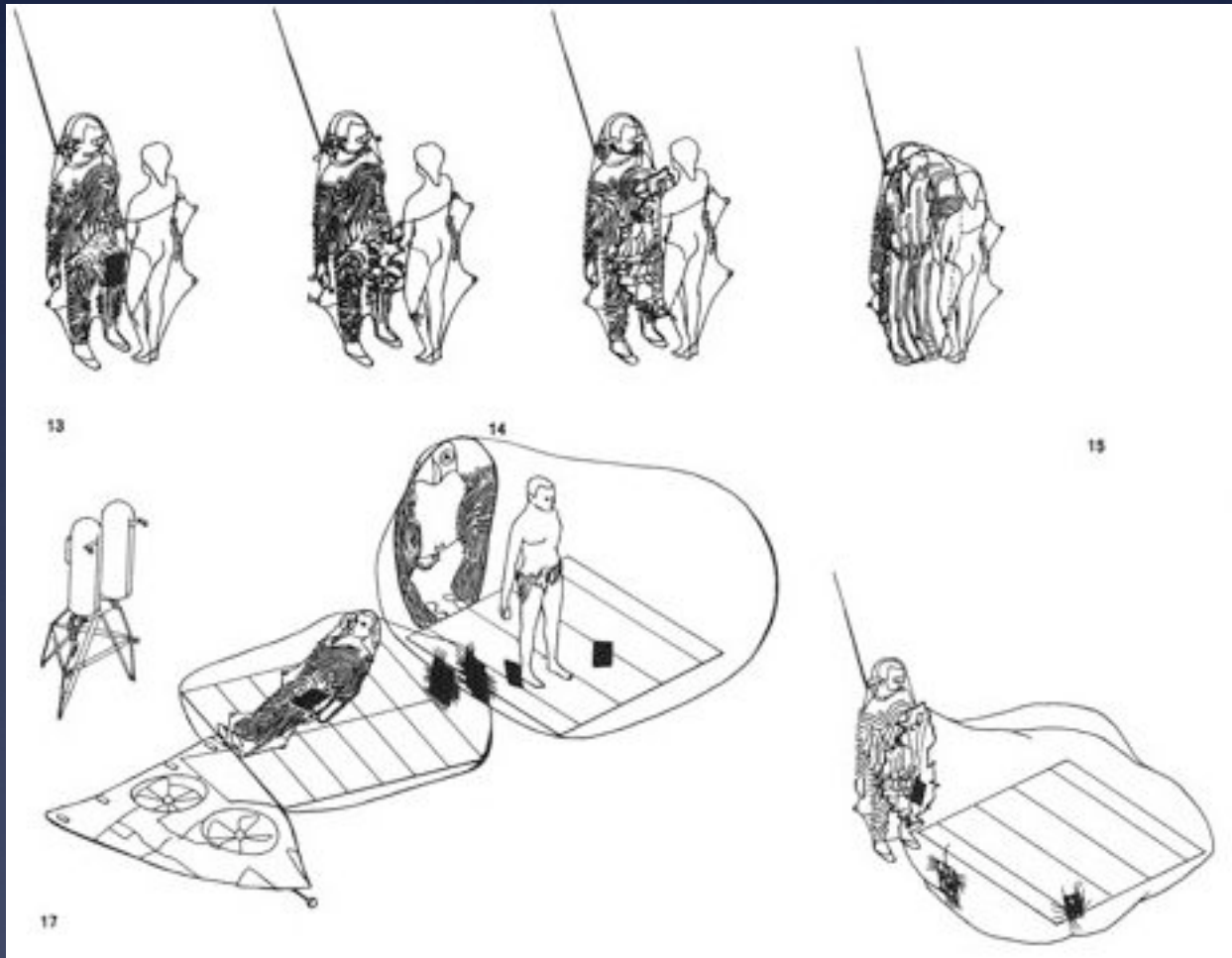
3. Highlight the Important: Make sure your diagrams tell the viewer what they should look at. Try using a different color or thicker line weight to draw attention to the main concept.

4. Common Base: Using the same drawing with different overlays. This way the viewer has something to relate to in each diagram and see the various layers of your project.

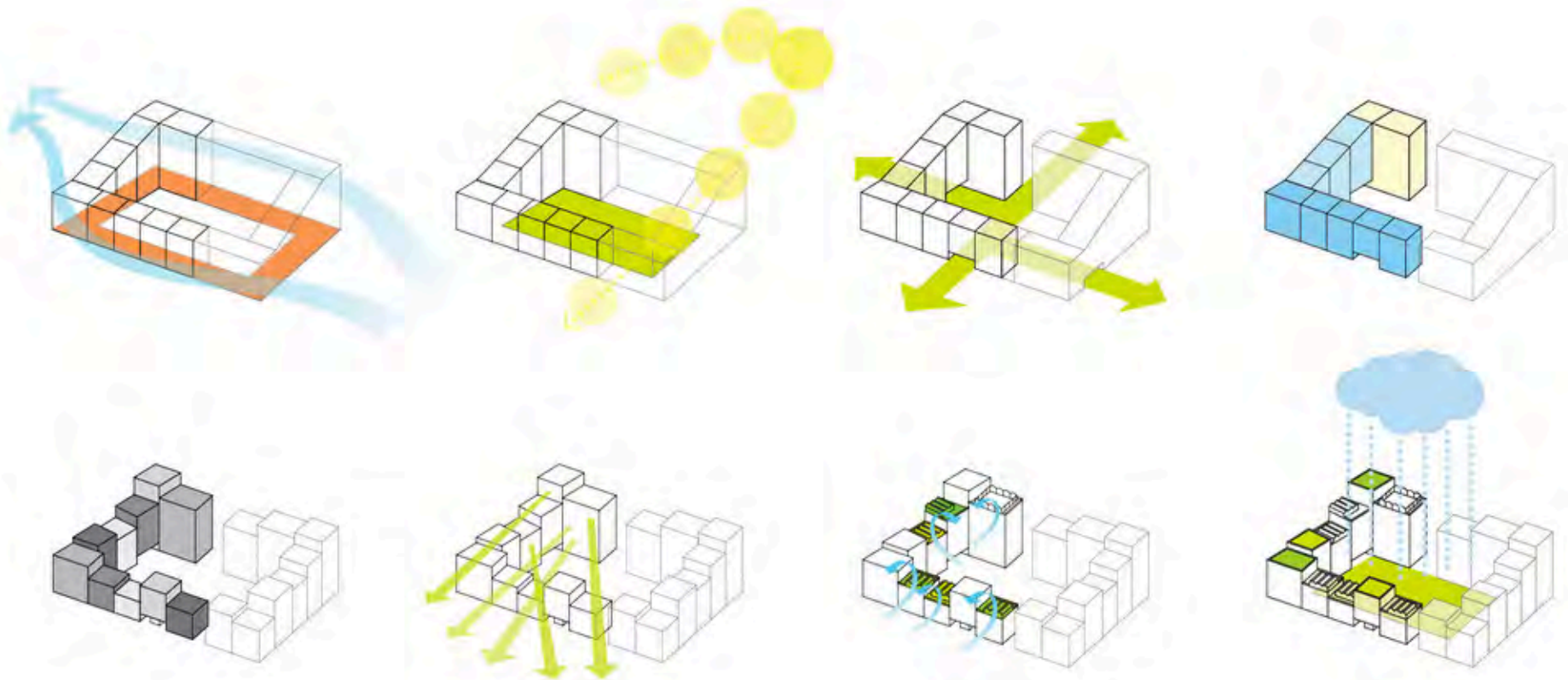
5. Stretch Reality: The world is complex. Sometimes we need to break things down the most simplest elements and exaggerate those elements to understand things more clearly.



morphology



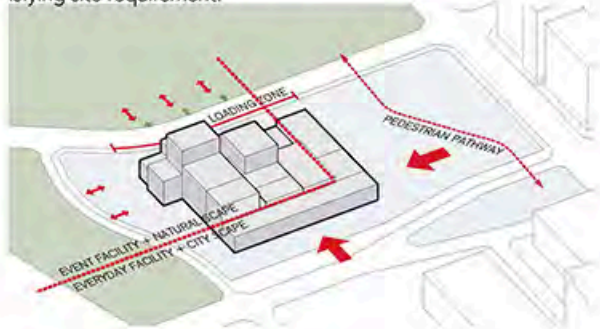
Tell the story



Response to forces

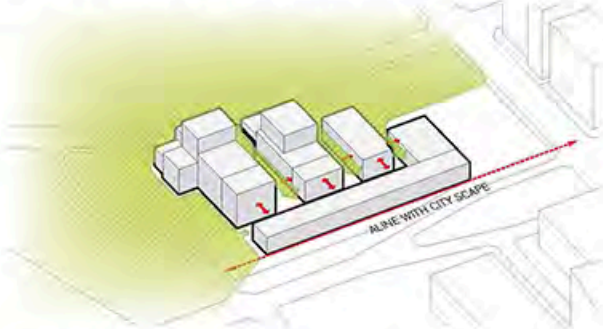
REORGANIZING CONTEXT

As a cultural complex, each functions are categorized and relocated by site condition of adjacent circumstances, resulting in satisfying site requirement.



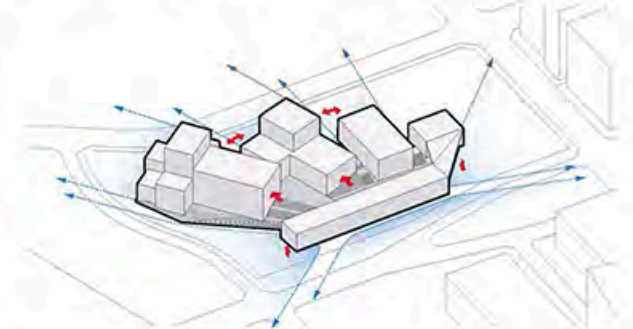
MAXIMIZING GREEN SURFACE

The new art center serves as cultural catalyst on the edge between city and nature side by making a in-between space.



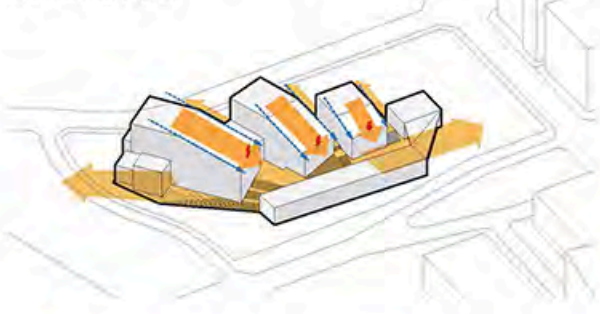
REDEFINING OUTDOOR SPACES

By modifying the volume, the relationship between volumes and context is reorganized to articulate outdoor activity.



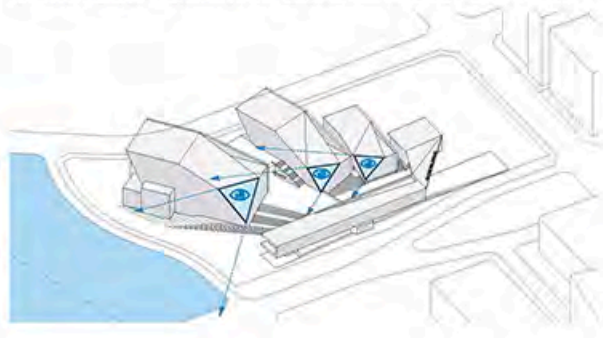
OPTIMIZING SHAPING

Leaning of the roof lines vitalize the PAN courtyard. Activity in there can be extended southward into the historical park and eastward riverside park.



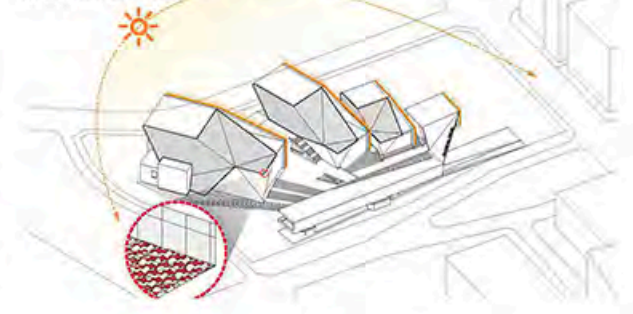
FRAME THE VIEW

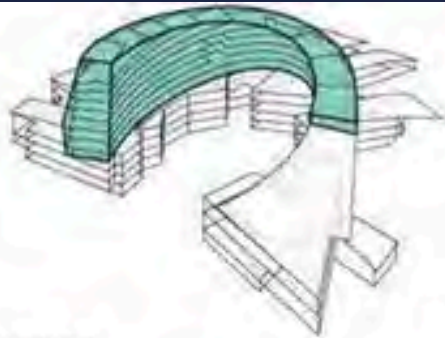
Each theater lobbies are faceted to obtain eastern river view. The faceted surface maximizes the view to the riverside from the deck.



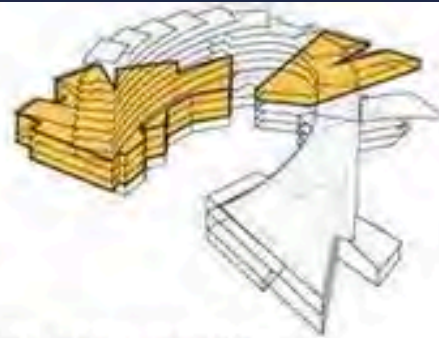
CONTROL DAYLIGHT

The roof system optimizes the daylight and micro climate by the eastern and northern transparent surfaces and thermal storage walls on northside.

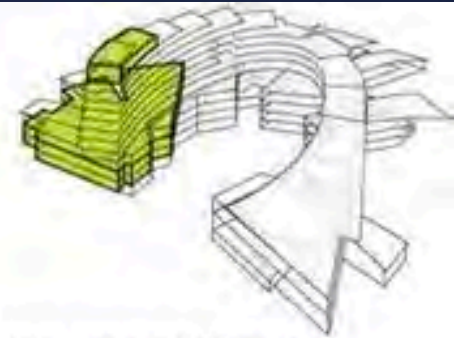




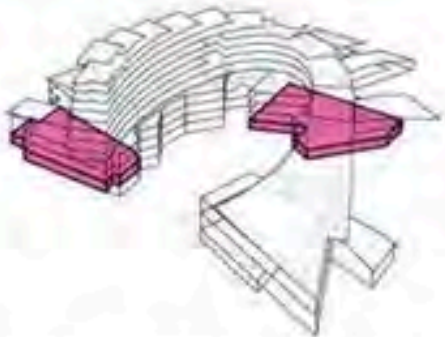
OFFICE



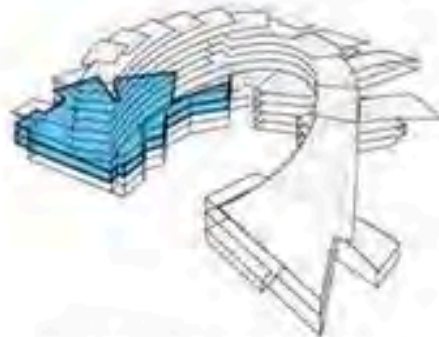
BUSINESS SUPPORT



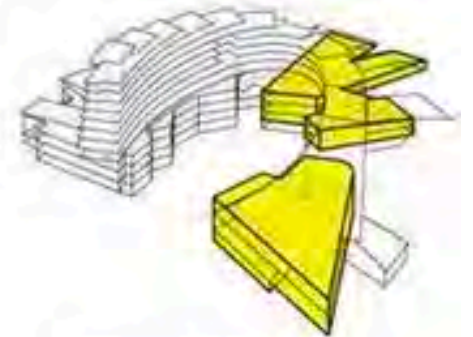
WELFARE FACILITIES



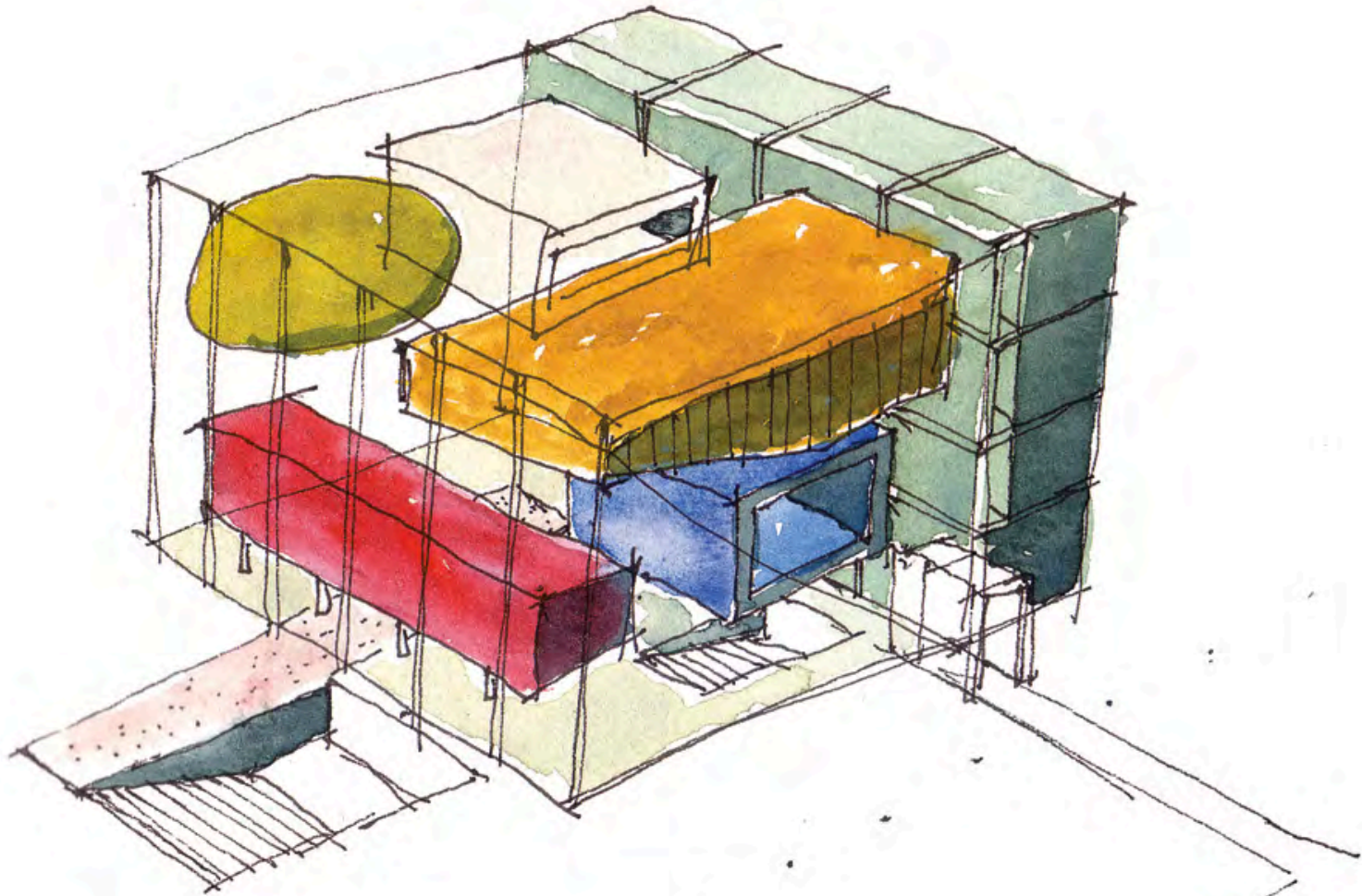
MEETING FACILITIES



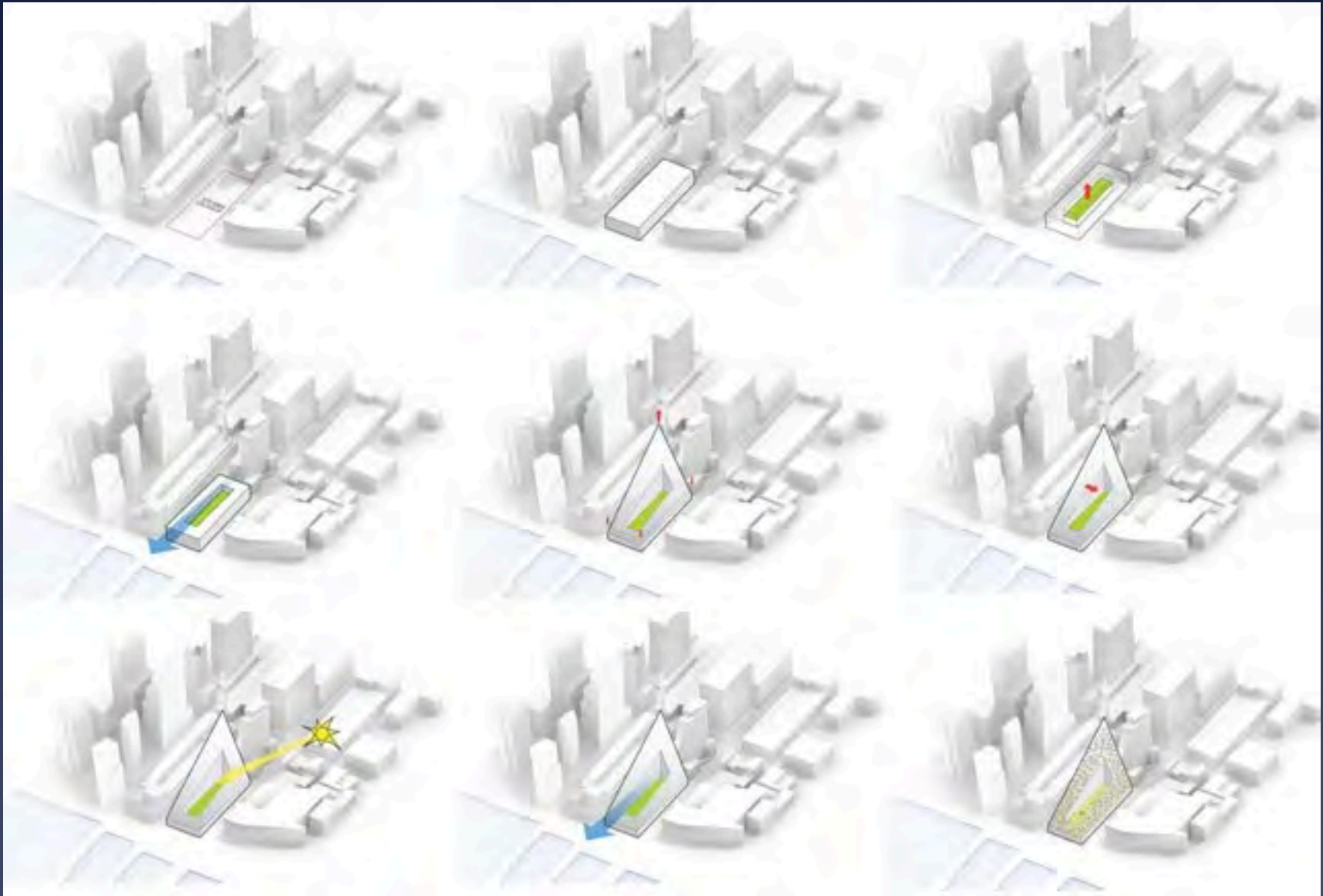
MANAGEMENT FACILITIES



AMMENTITIES



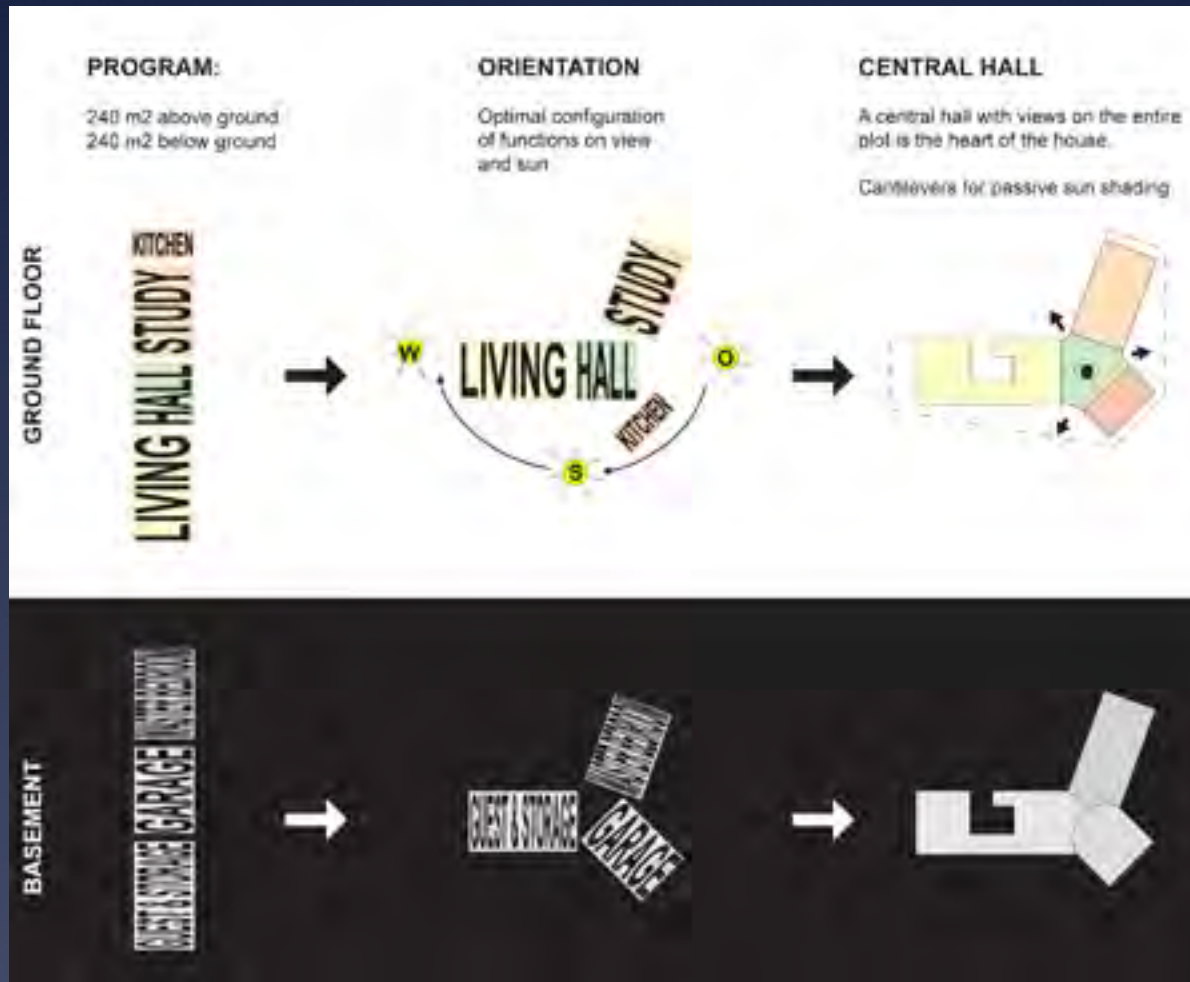
16/7
M/00



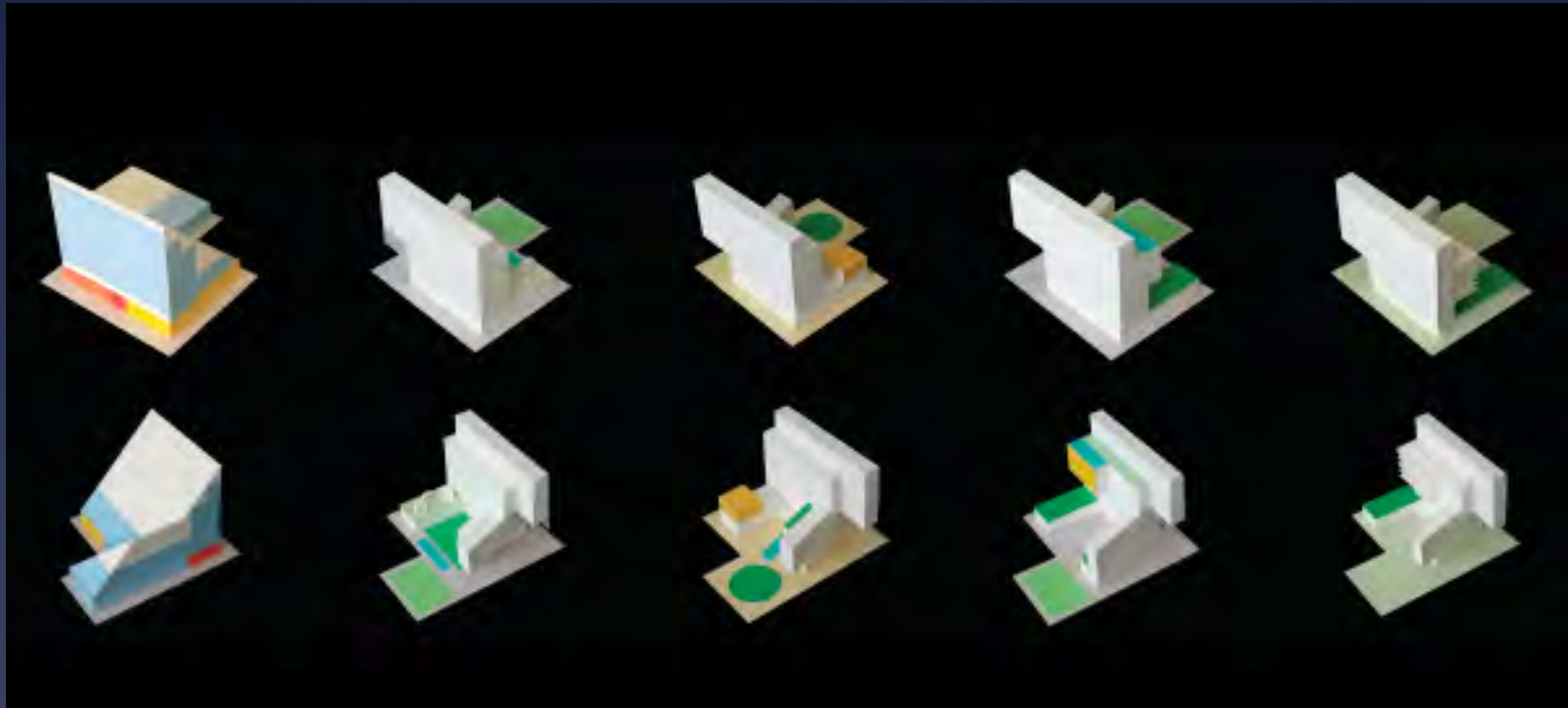
Tell the story



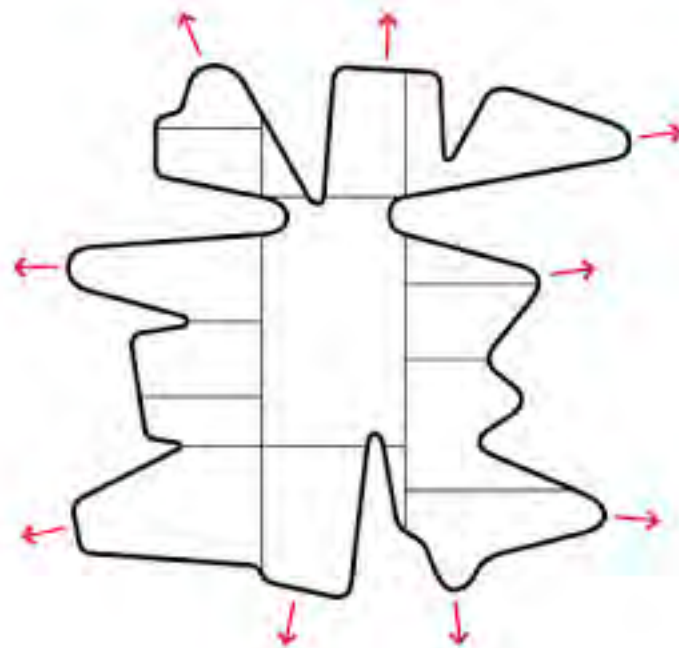
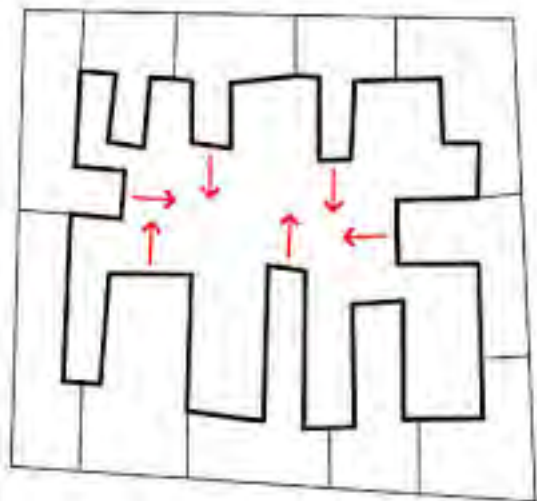
Tell the story



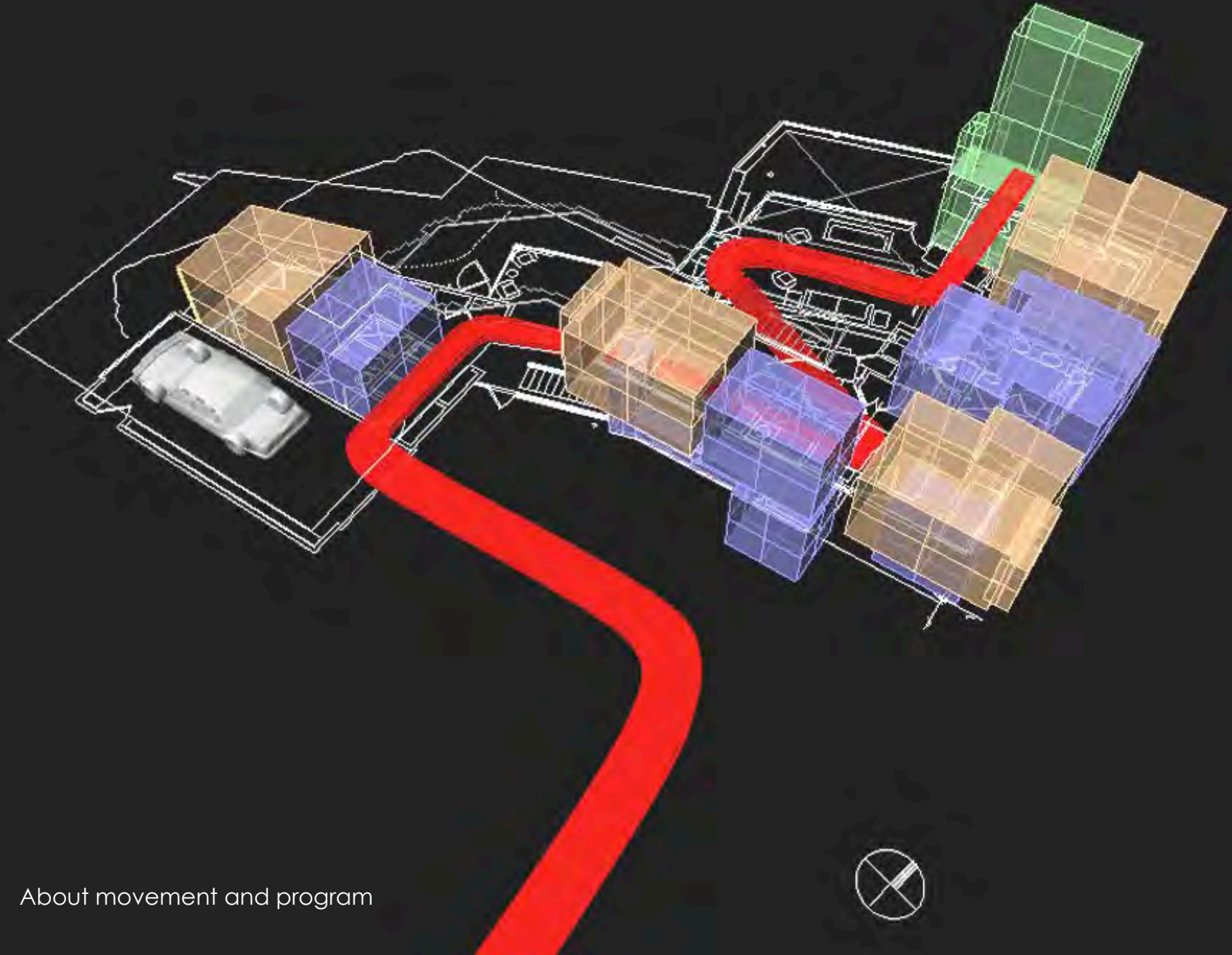
Tell the story



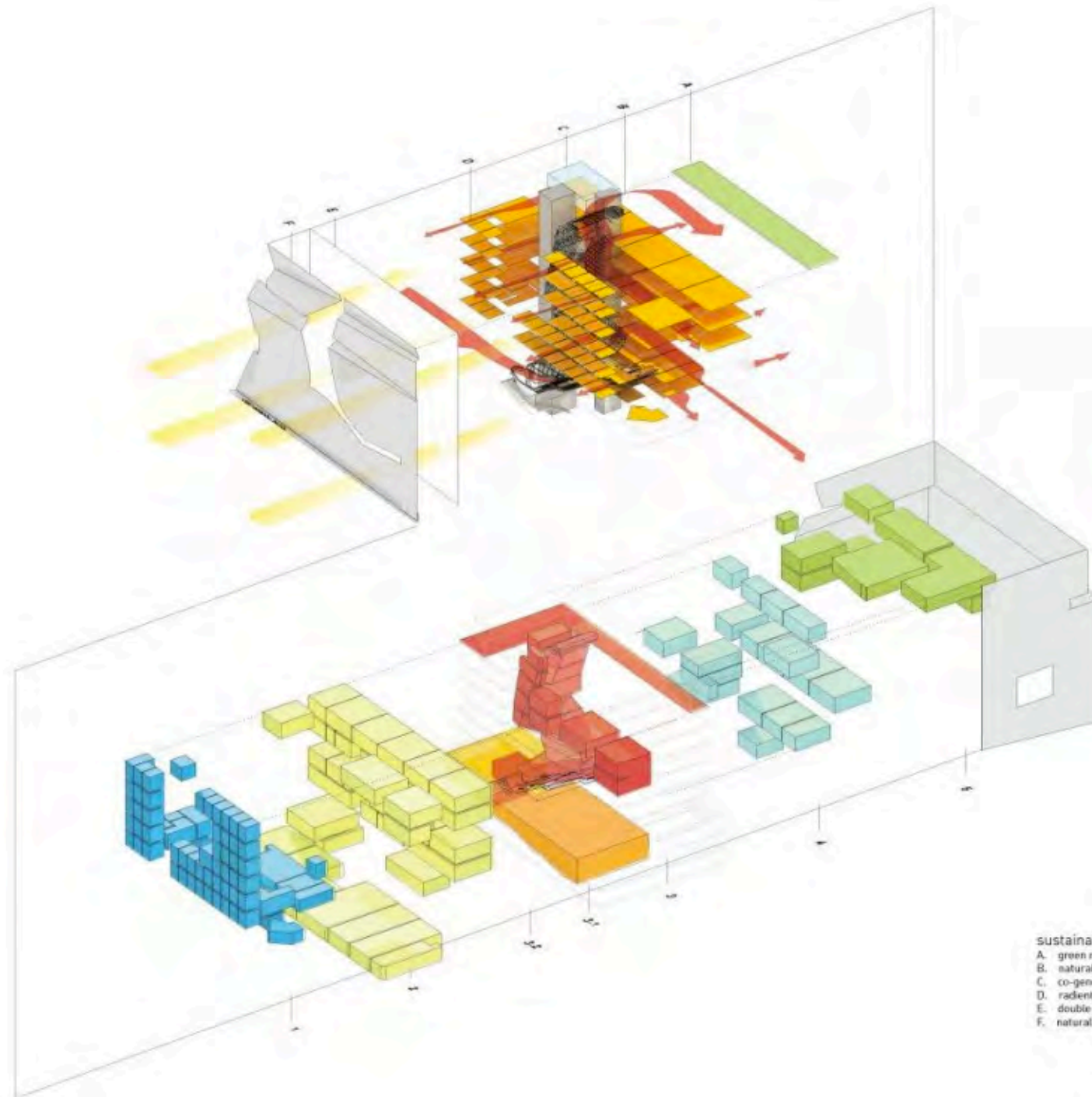
Tell the story



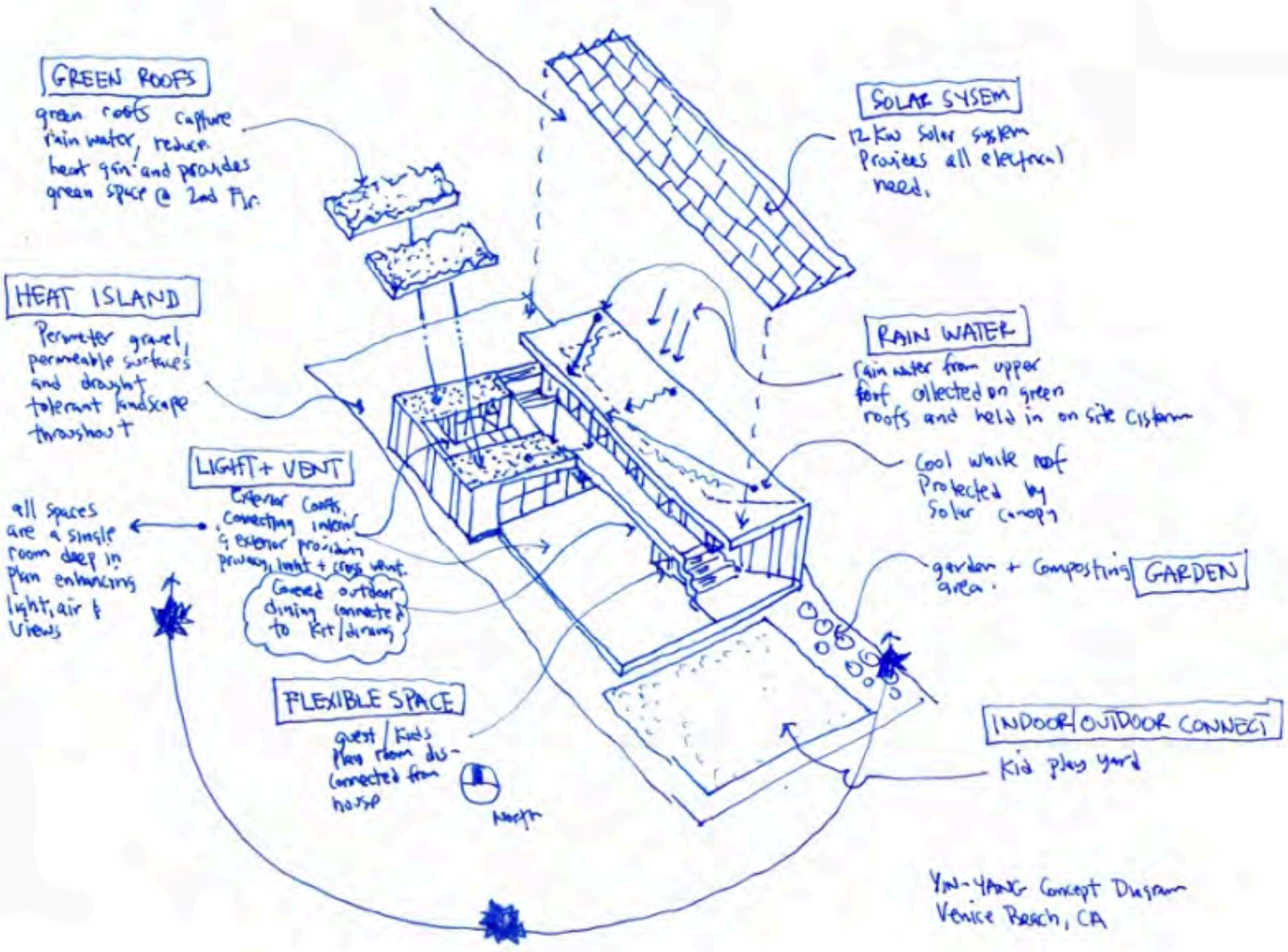
Tell the story



About movement and program



- | sustainable strategies | program |
|------------------------|-----------------|
| A. green roof | 1. offices |
| B. natural ventilation | 2. laboratories |
| C. co-generation plant | 3. social space |
| D. radiant ceilings | 3.1 auditorium |
| E. double skin facade | 3.2 gallery |
| F. natural daylighting | 4. classrooms |
| | 5. art studios |



Yin-Yang Concept Design
Venice Beach, CA