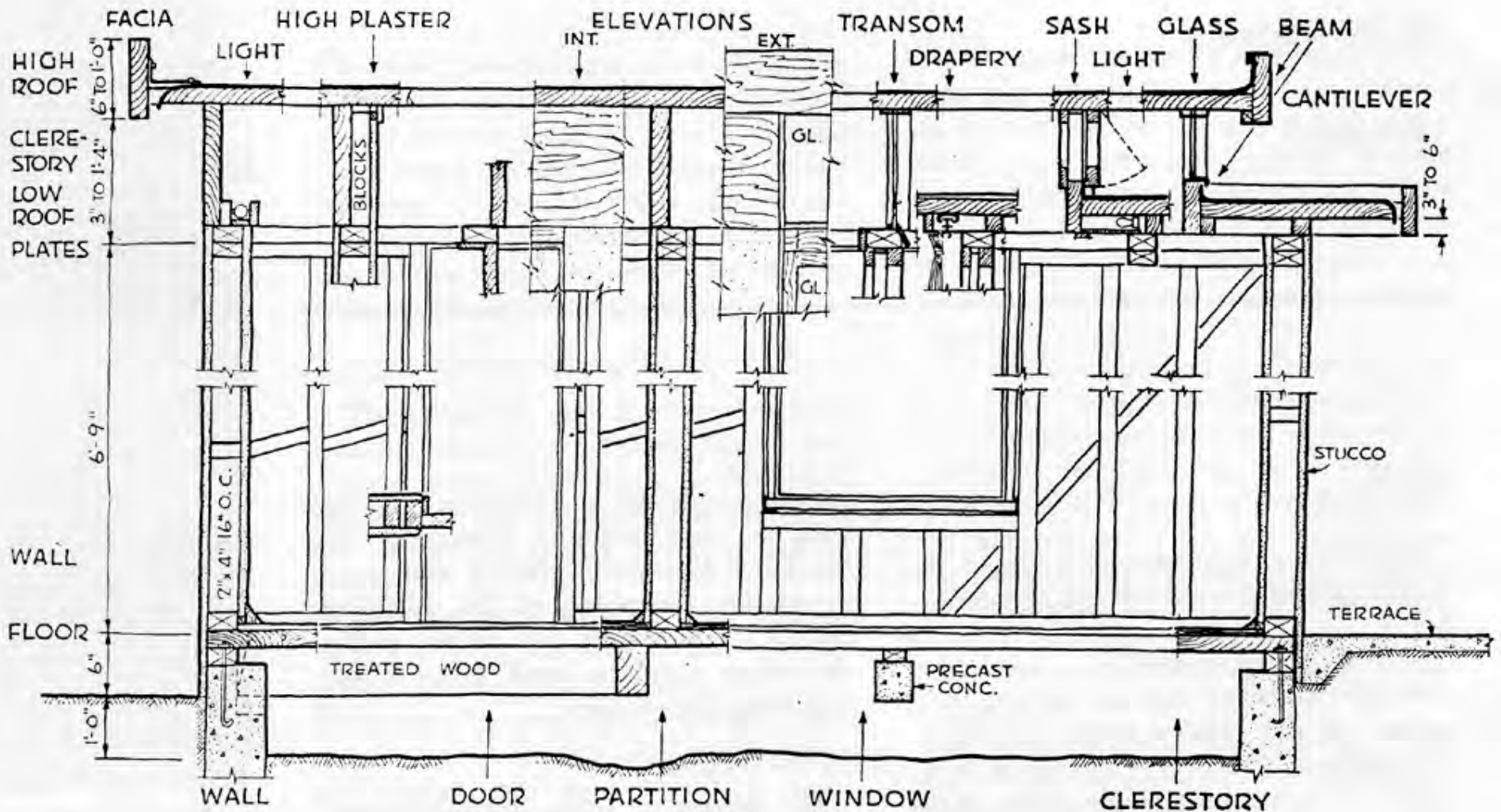
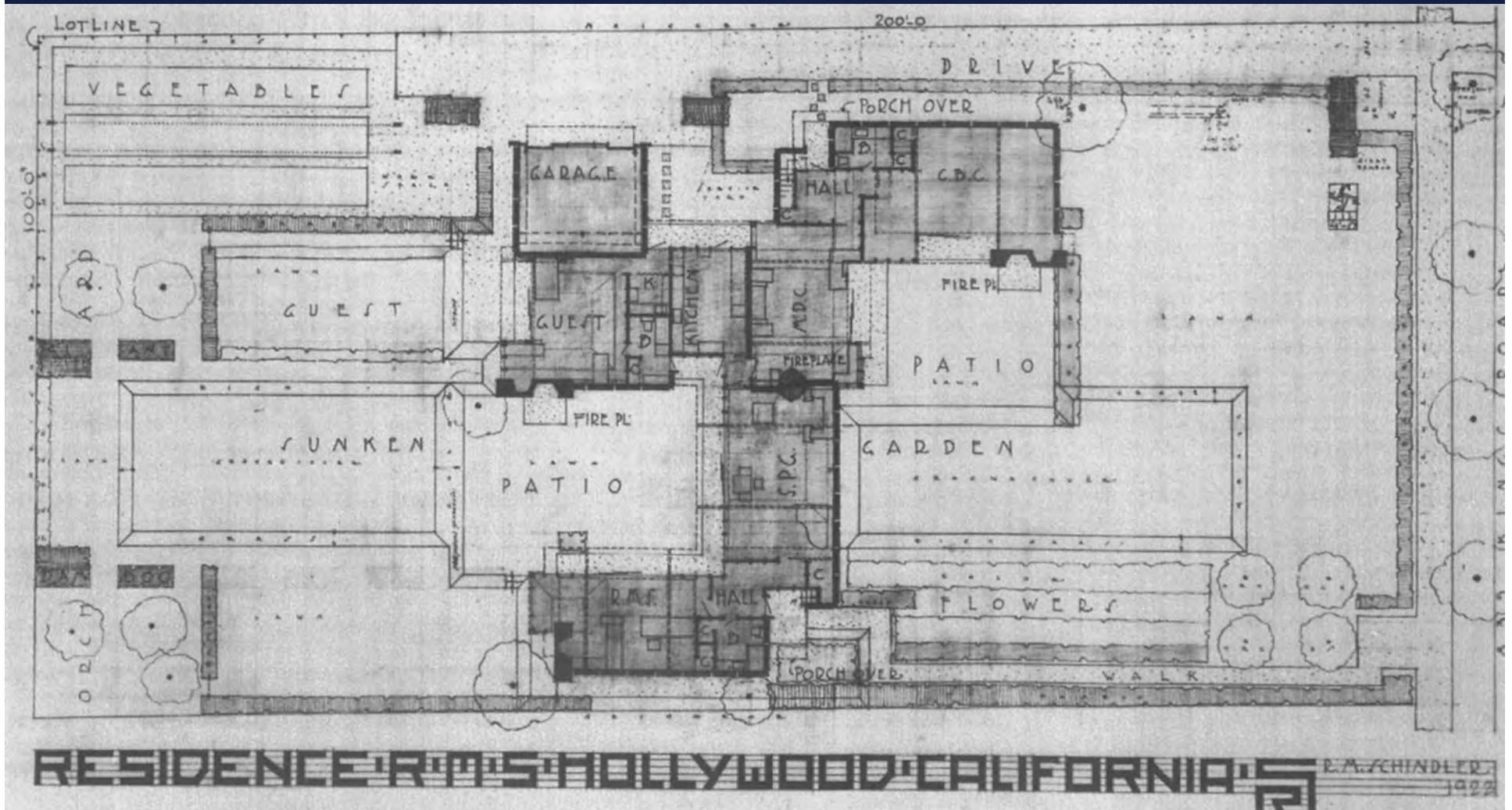


Kings Road Houses

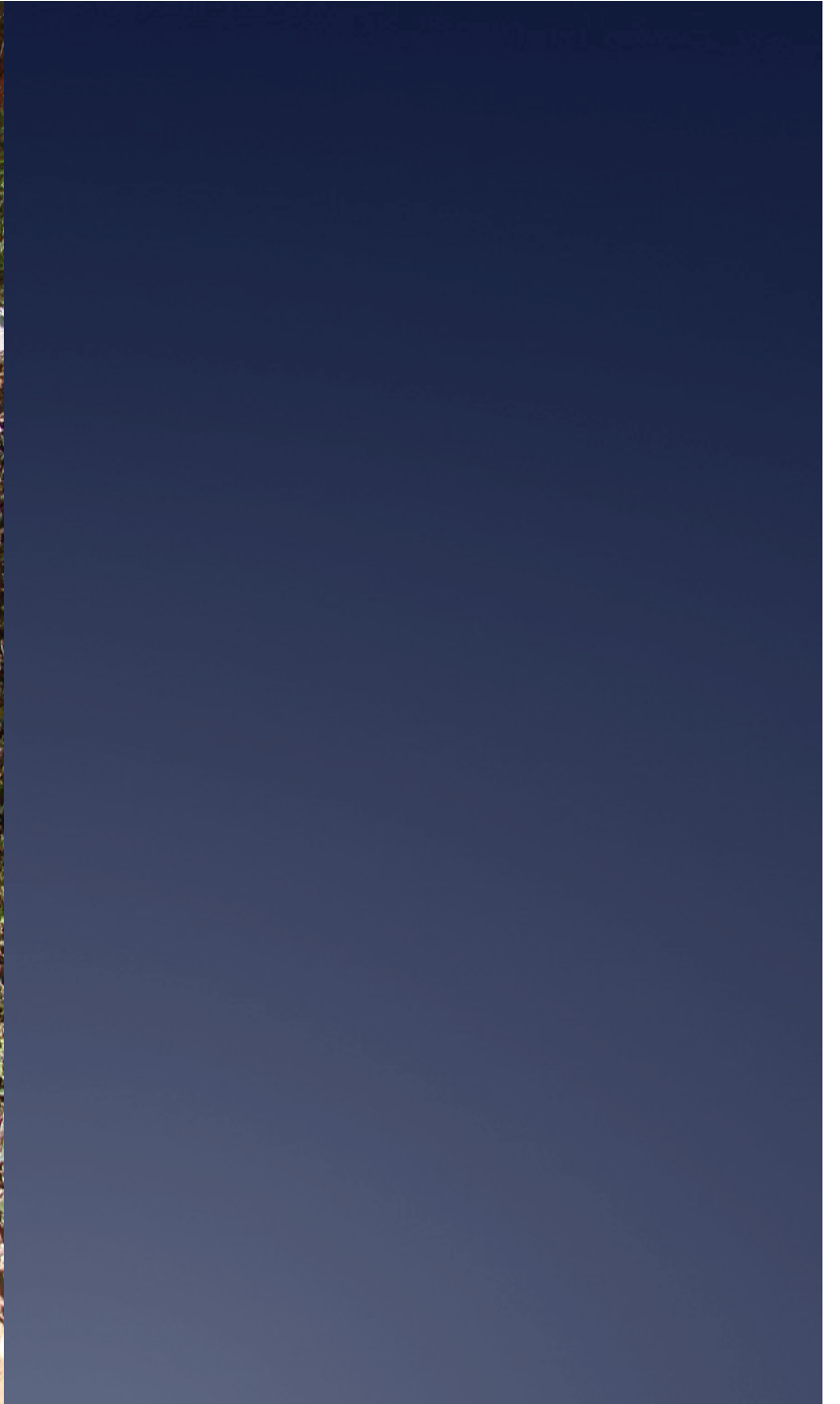
Rudolph
Schindler 1922



The "Schindler Frame" (from an article in *Architectural Record*, May 1947).

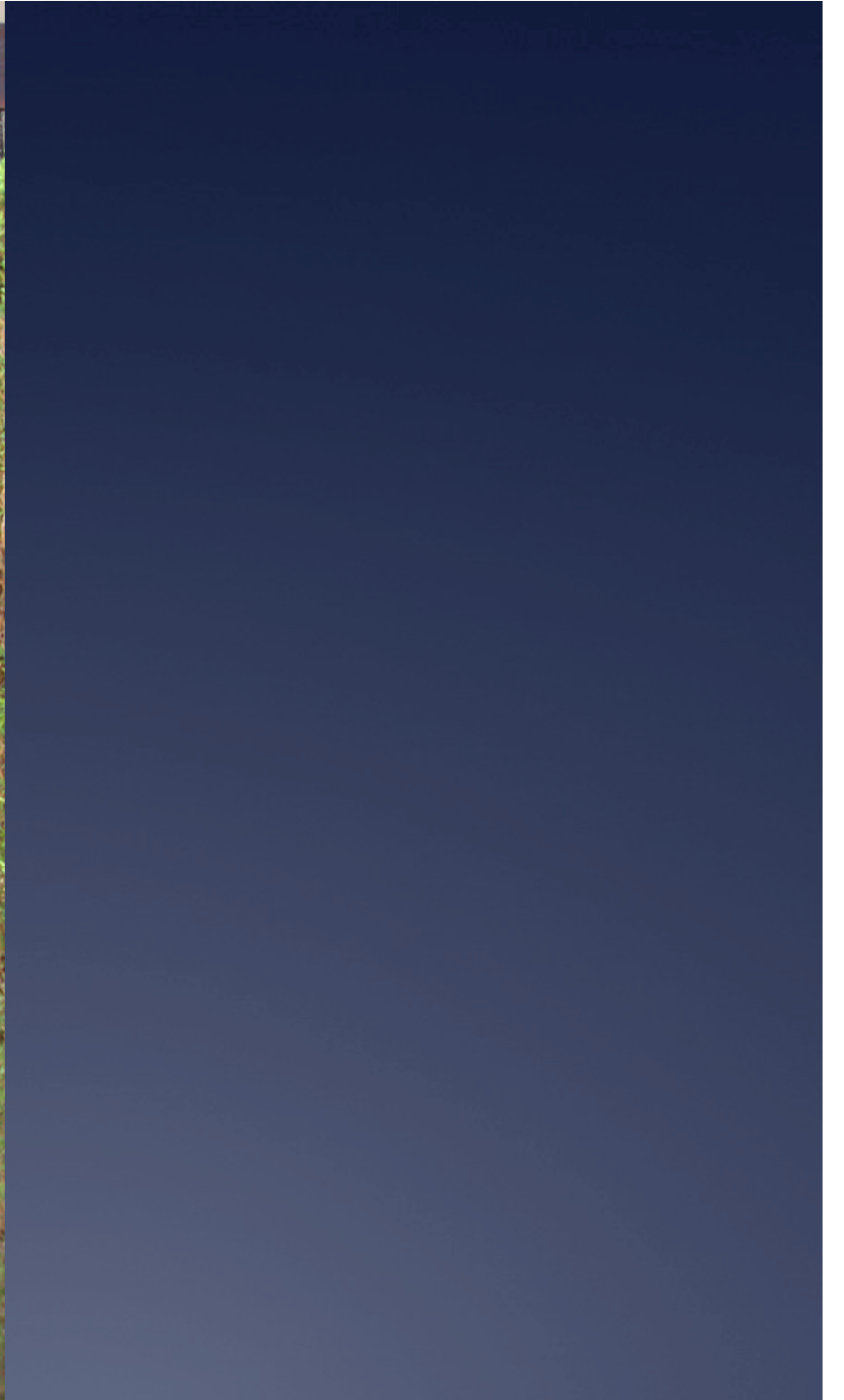


The site is small: 100' x 200.' Rather than being a figural house footprint placed on a neutral ground, the entire site is conceived as an active architectural field.













Tilt-up concrete wall panels are 45" wide, 8'-6" high, 9 1/2" thick at the base, and 5" thick at the top, with 3" wide glazed openings between adjacent panels.







