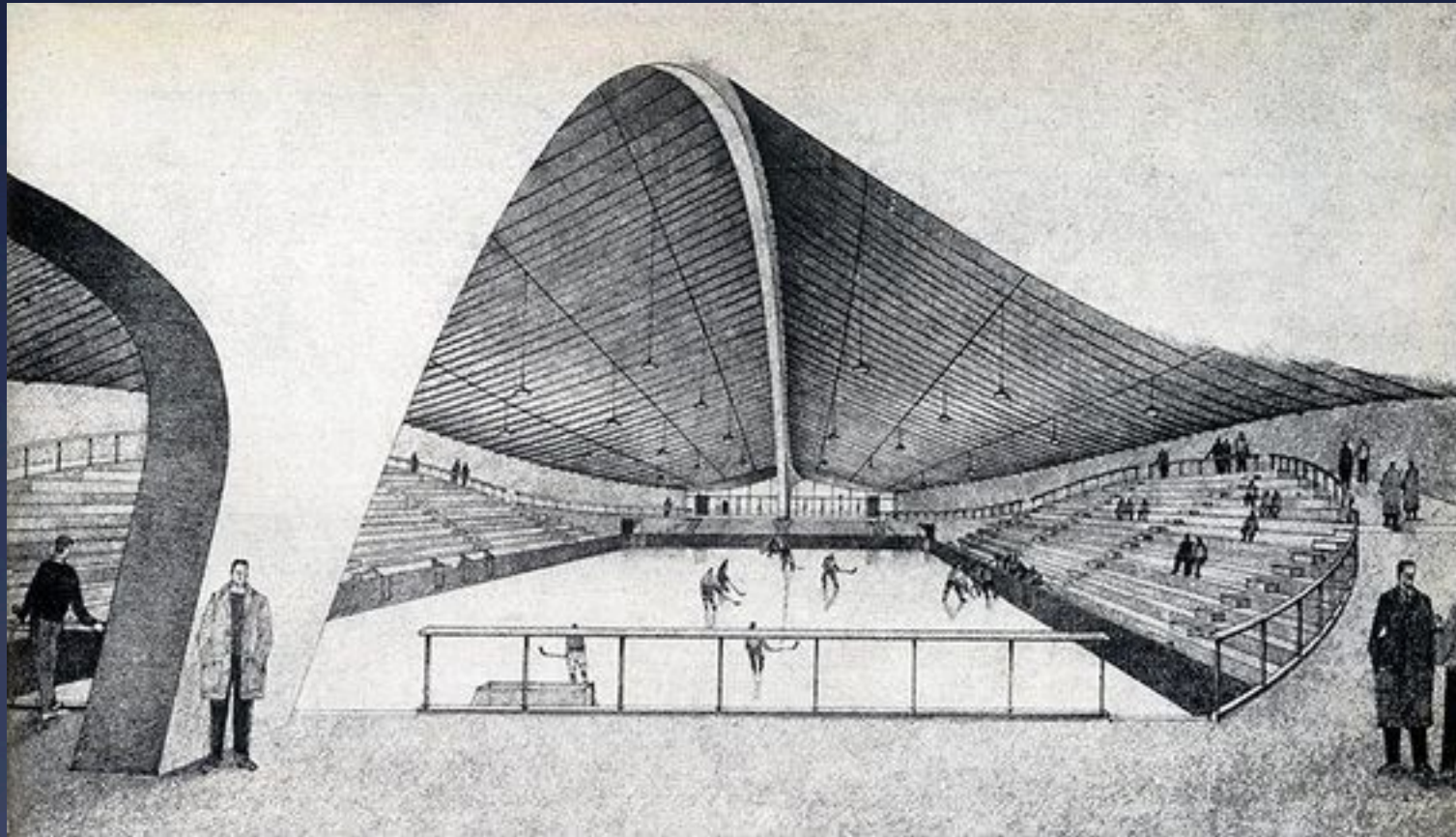


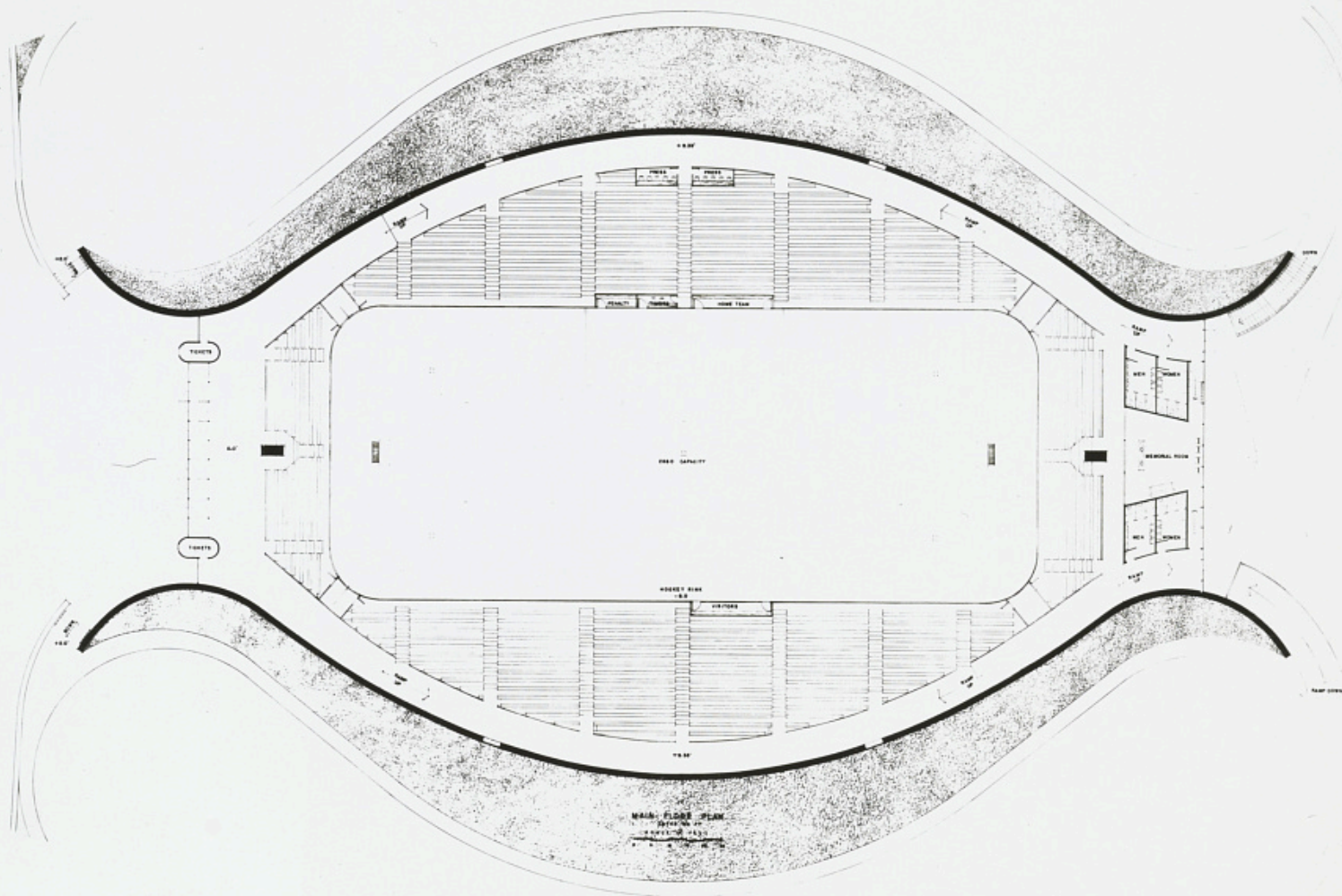
Wooden Shell

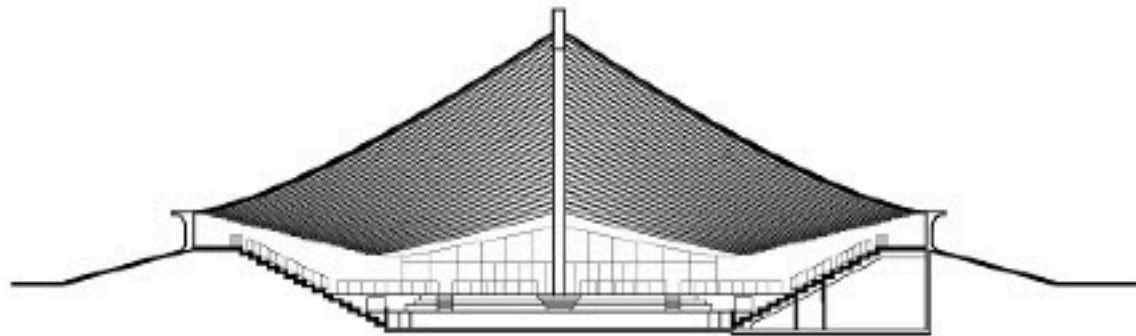
Saarinen Ingalls
Hockey Arena, Yale,
1959

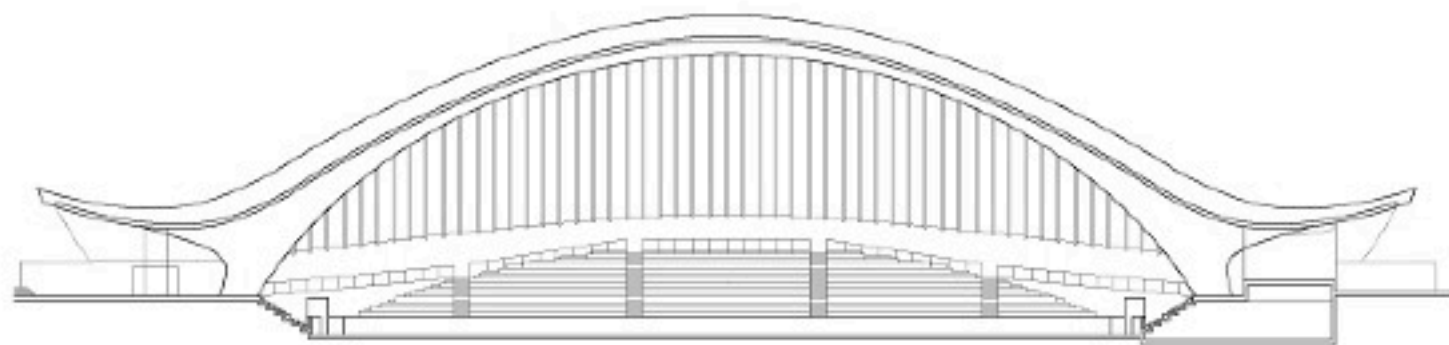


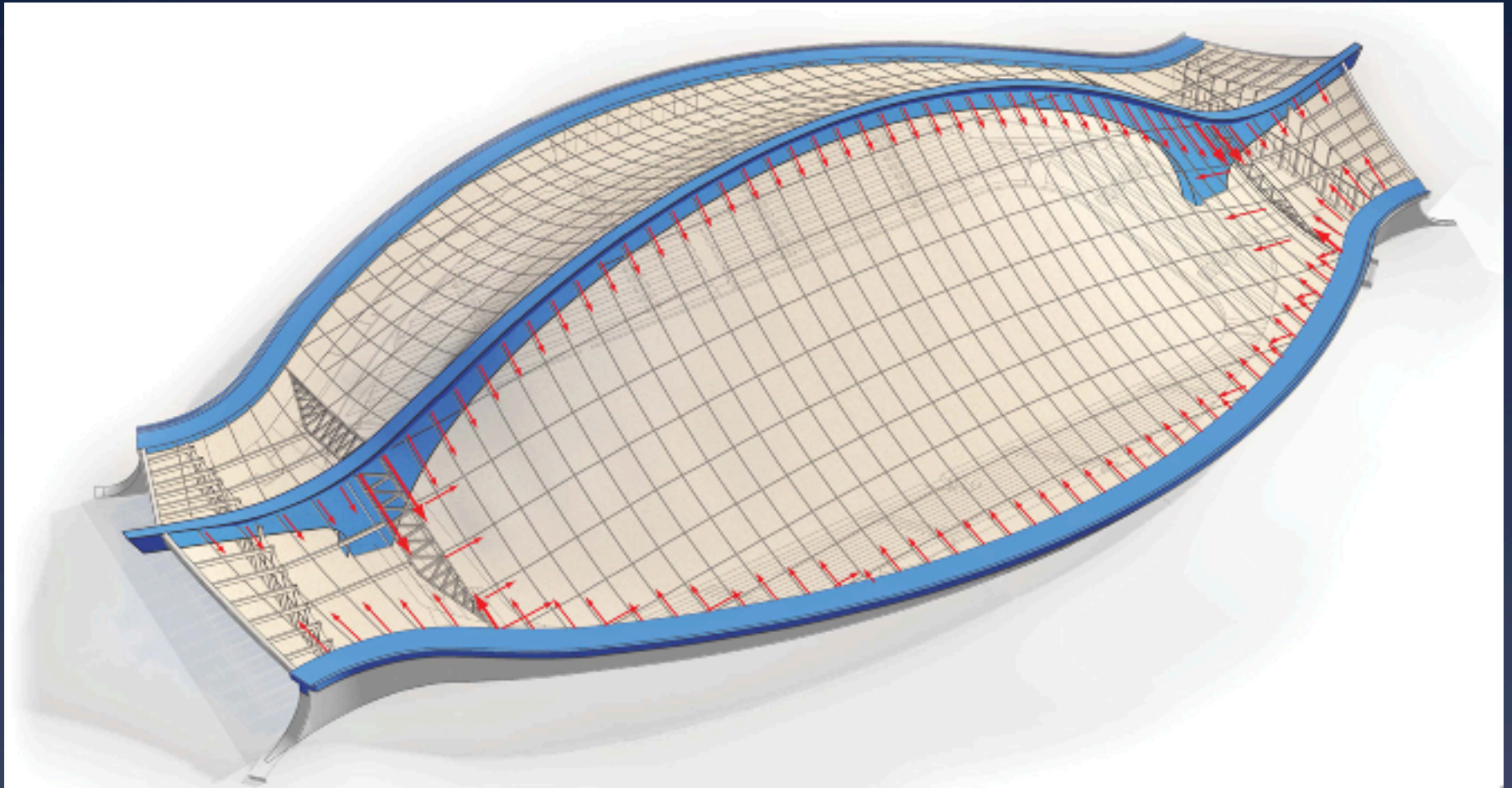
© 2006 Pictometry

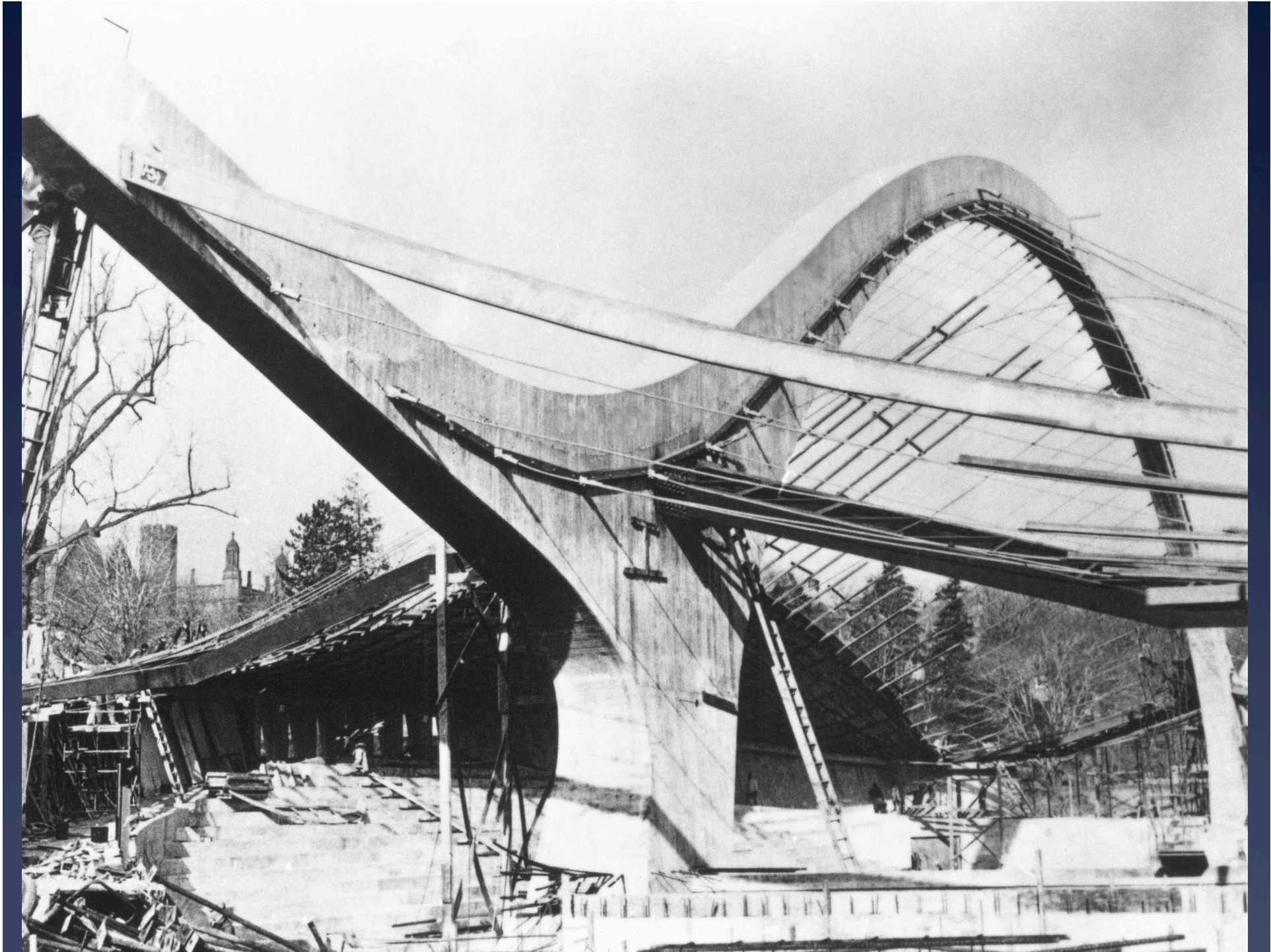


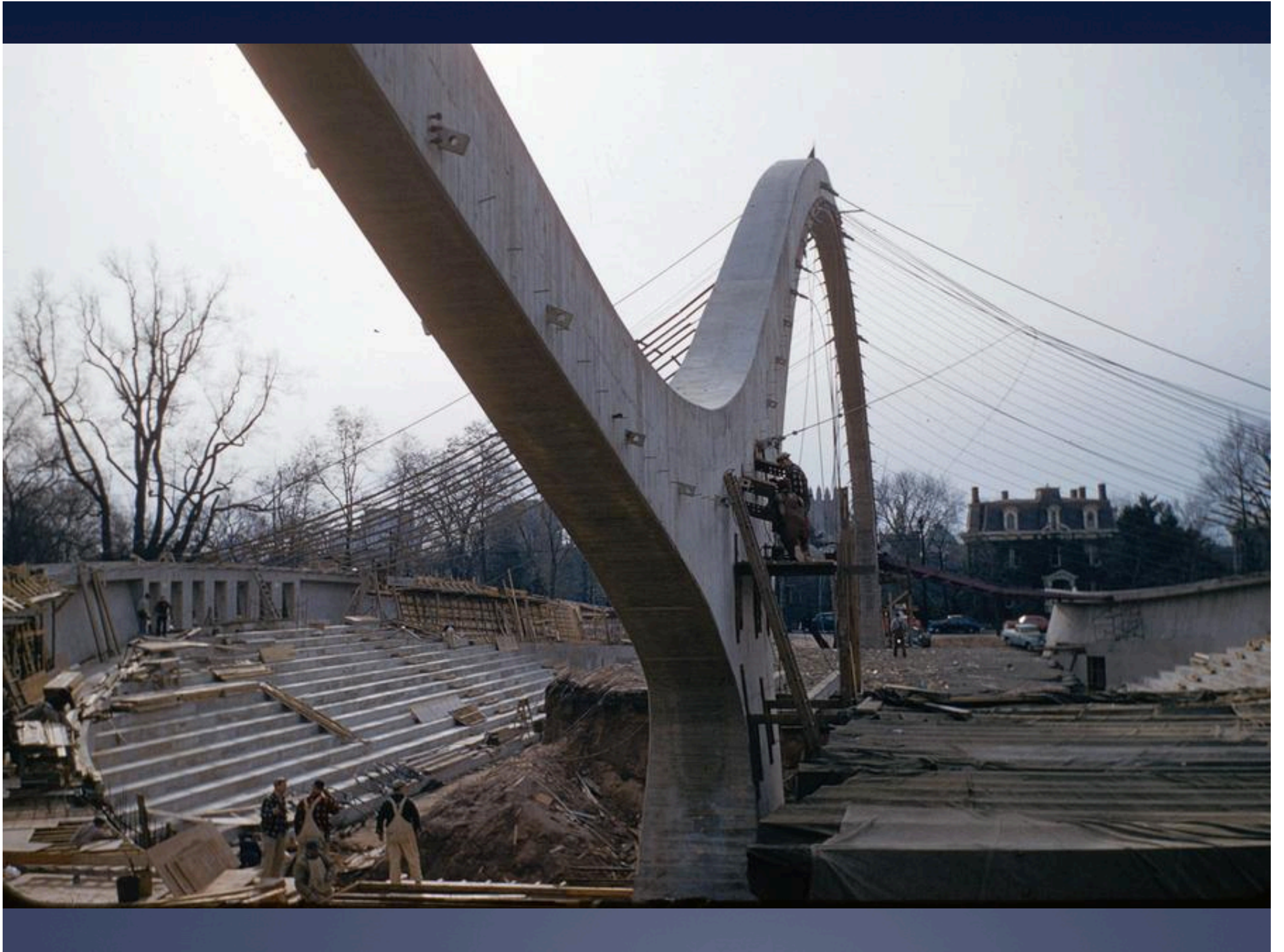


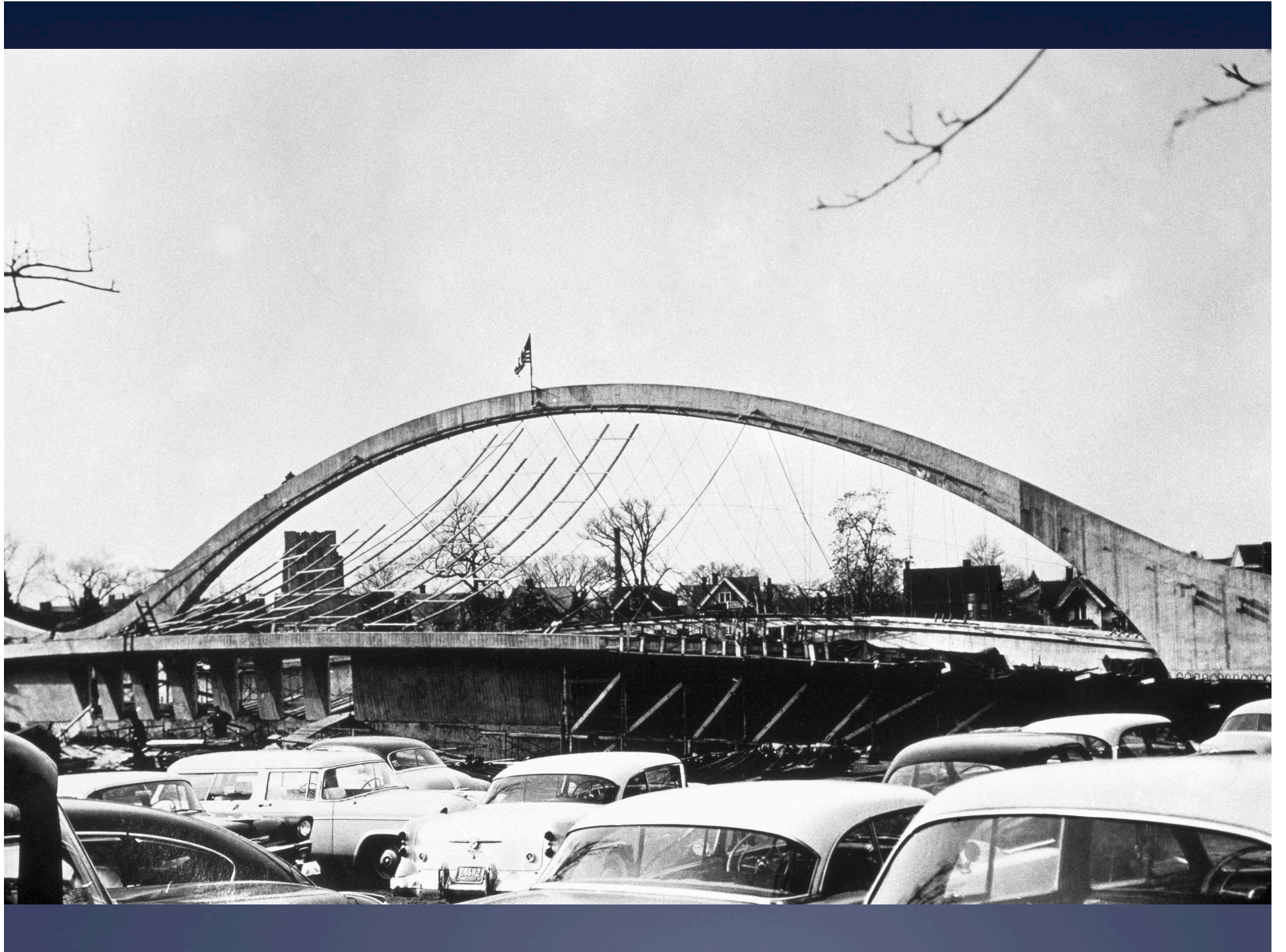






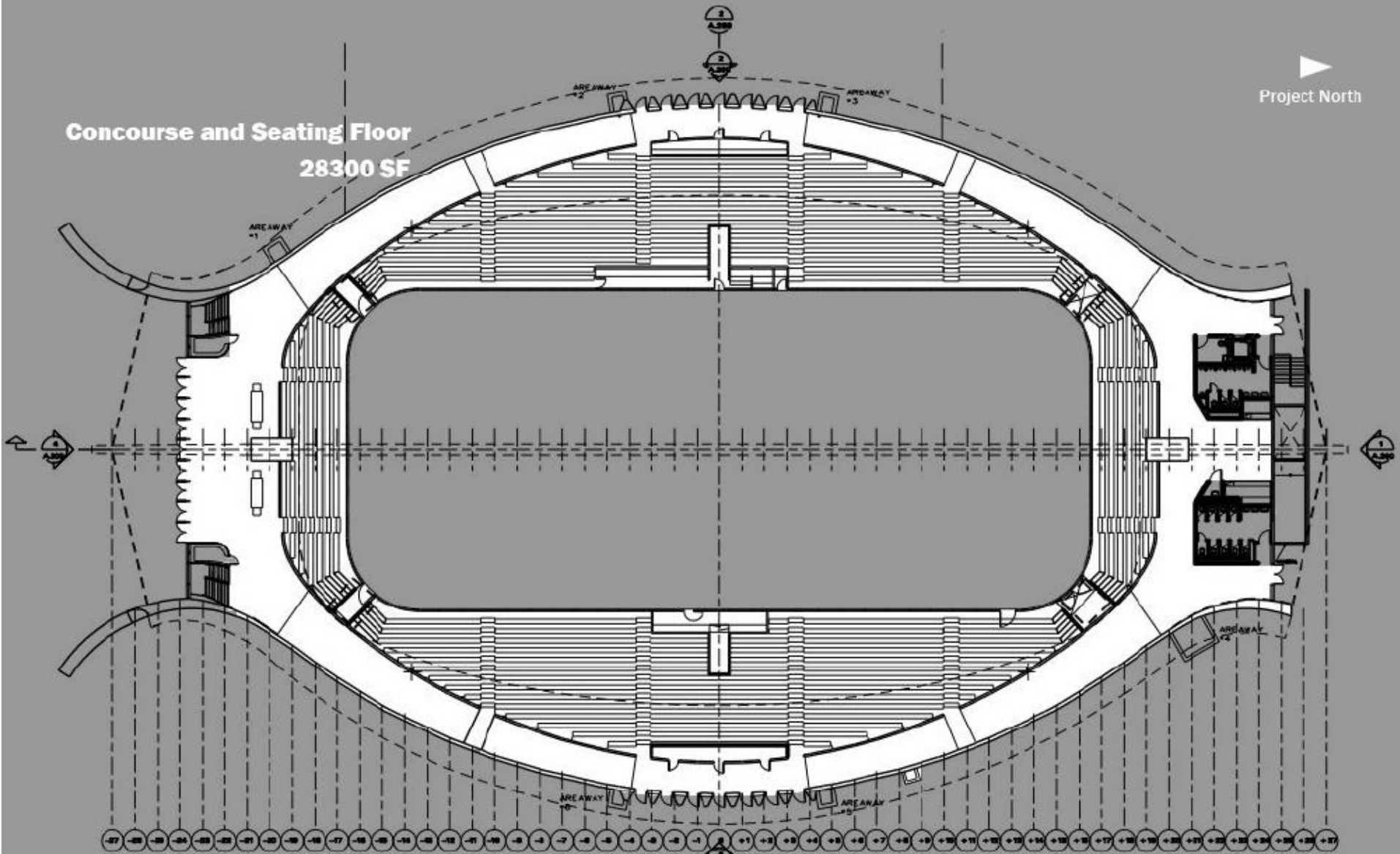




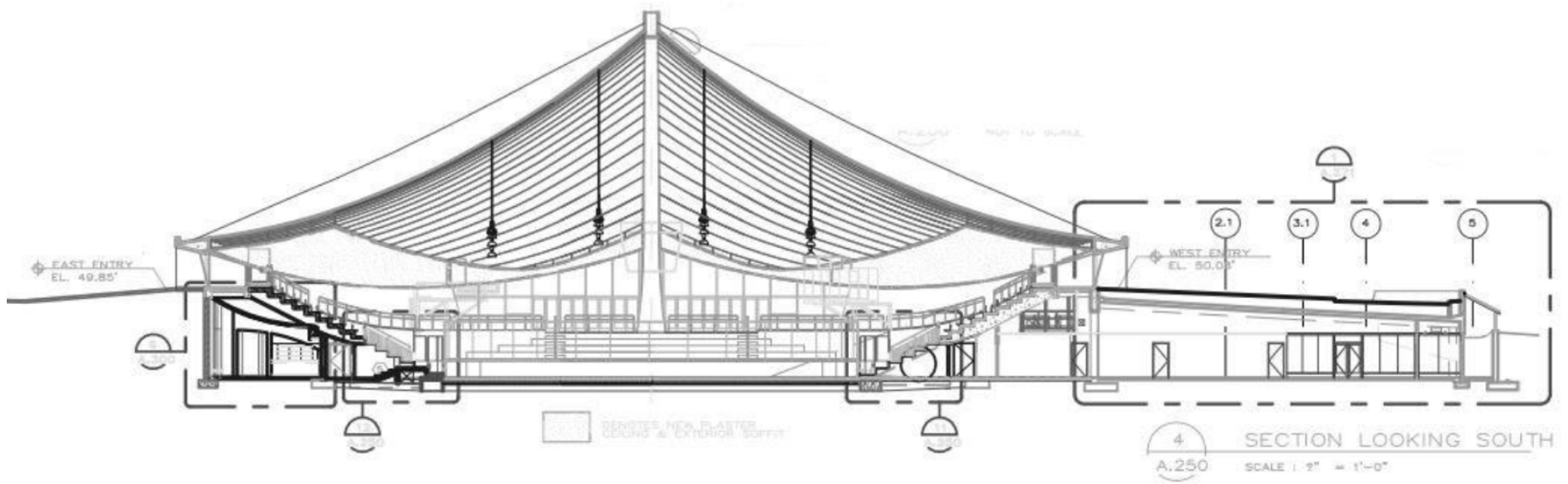


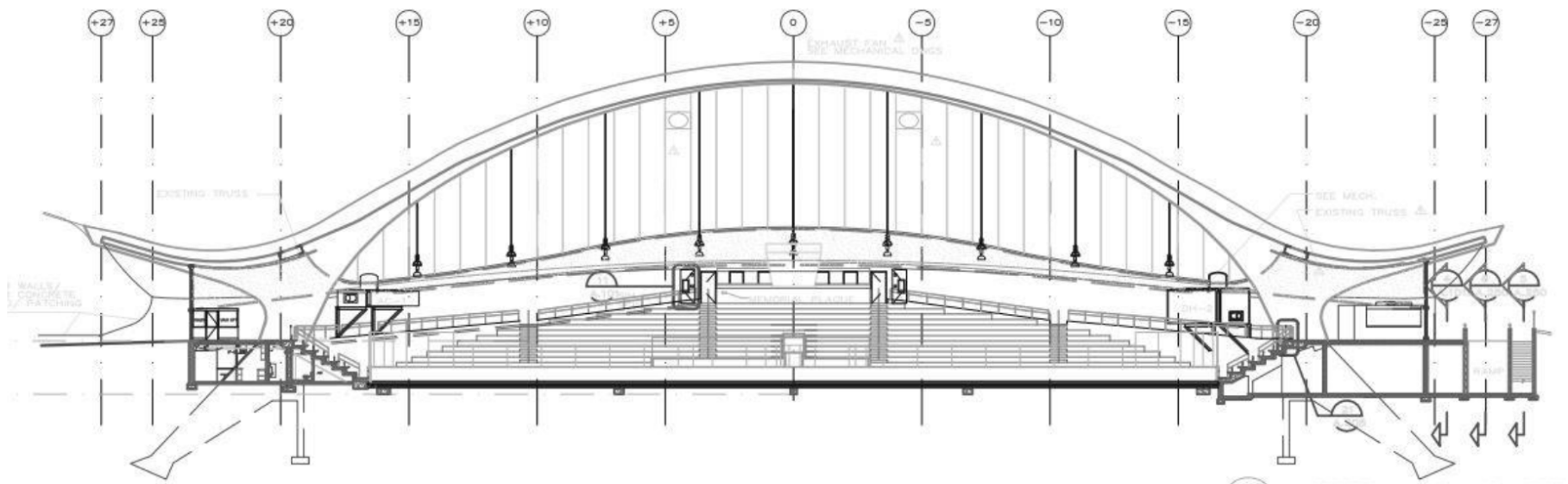
Concourse and Seating Floor
28300 SF

Project North



1
A-101
GROUND FLOOR PLAN
SCALE: 1/4" = 1'-0"





3 SECTION LOOKING WEST
 A.250 SCALE: 1/4" = 1'-0"

Ingalls Hockey Arena, Yale
Eero Saarinen 1959

