

Silence and Light

Kimbell Art Museum,
Louis Kahn, 1972

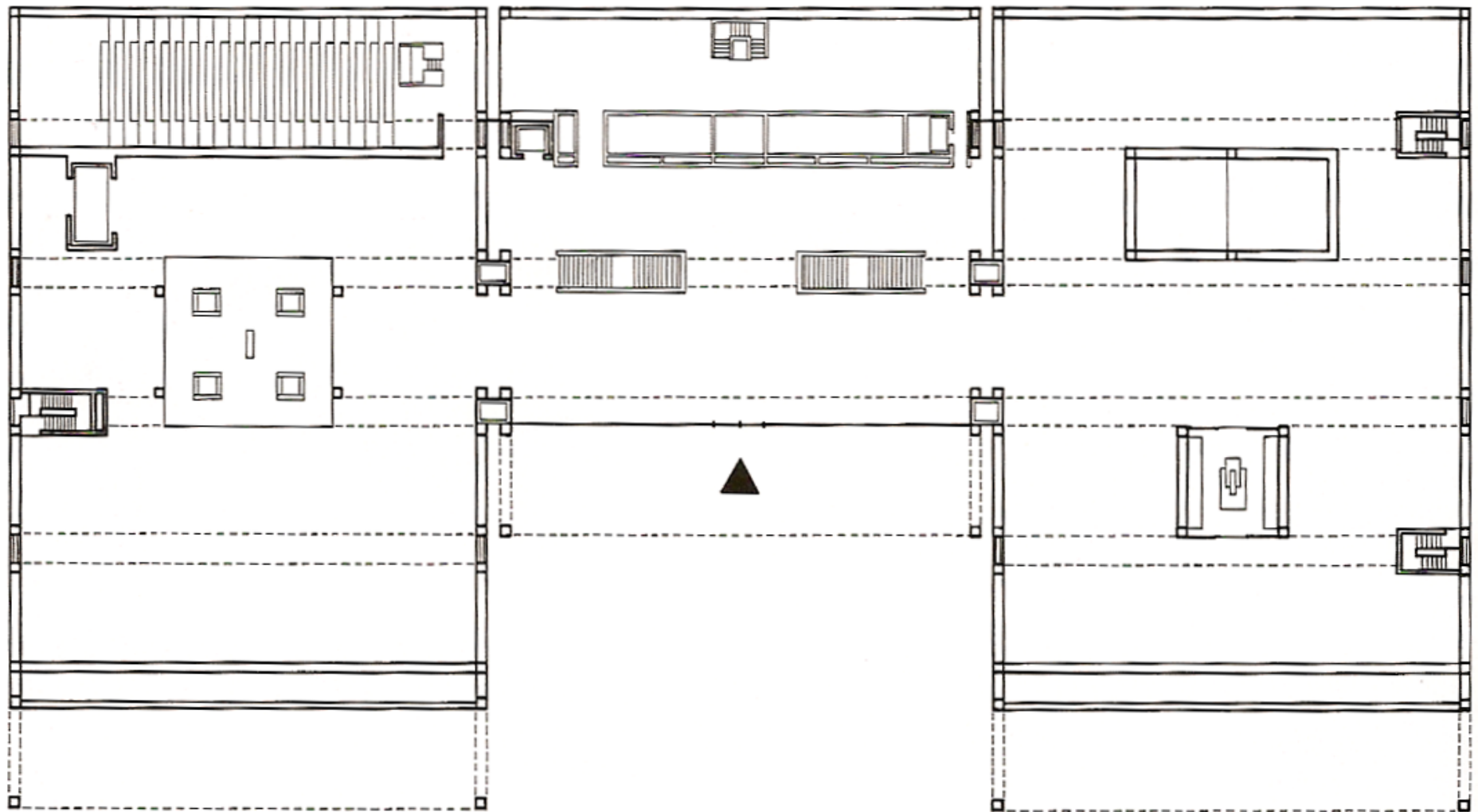


“All material in nature,
The mountains and the streams and the air and we,
Are made of Light which has been spent,
And this crumpled mass called material casts a shadow
And the shadow belongs to the Light”

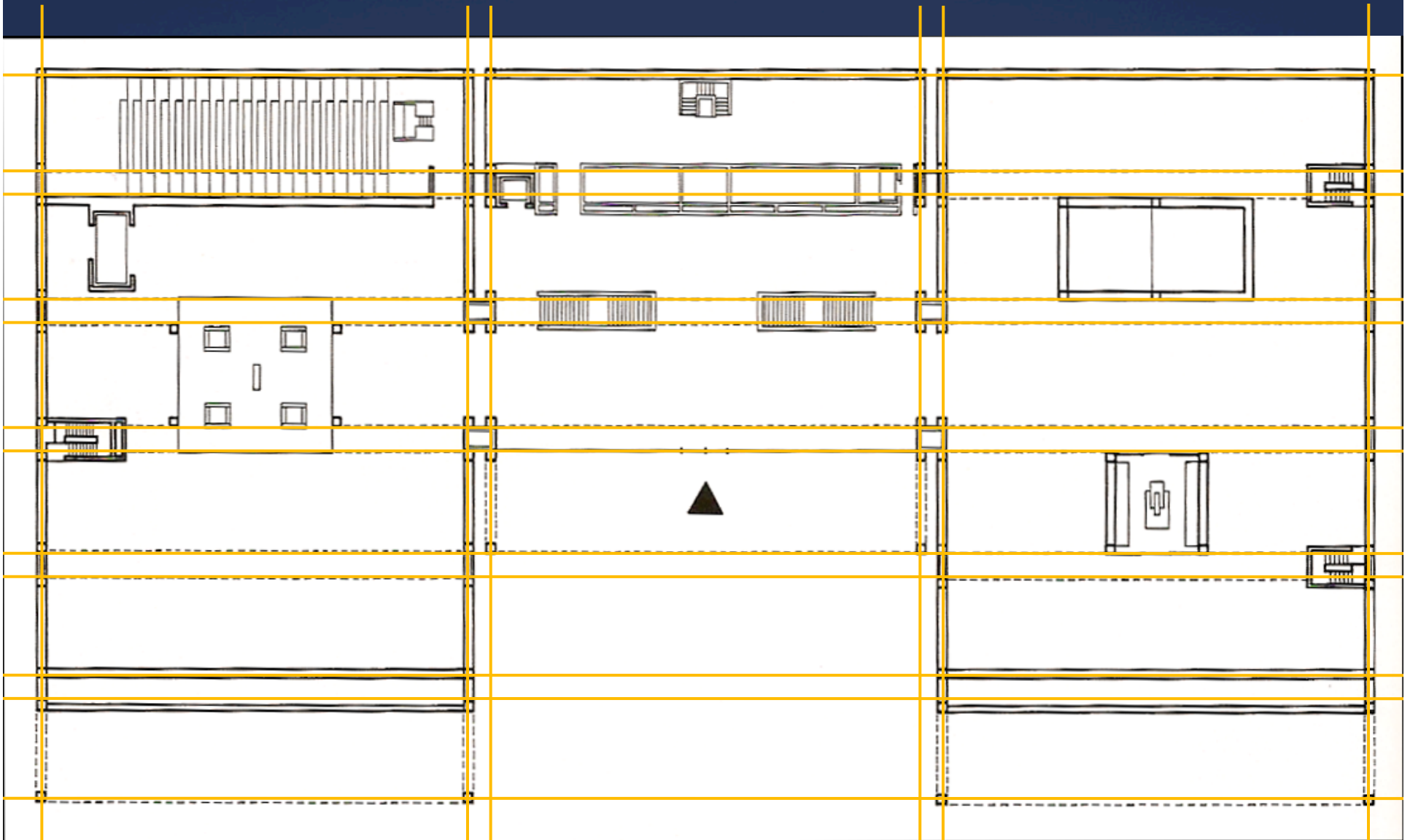




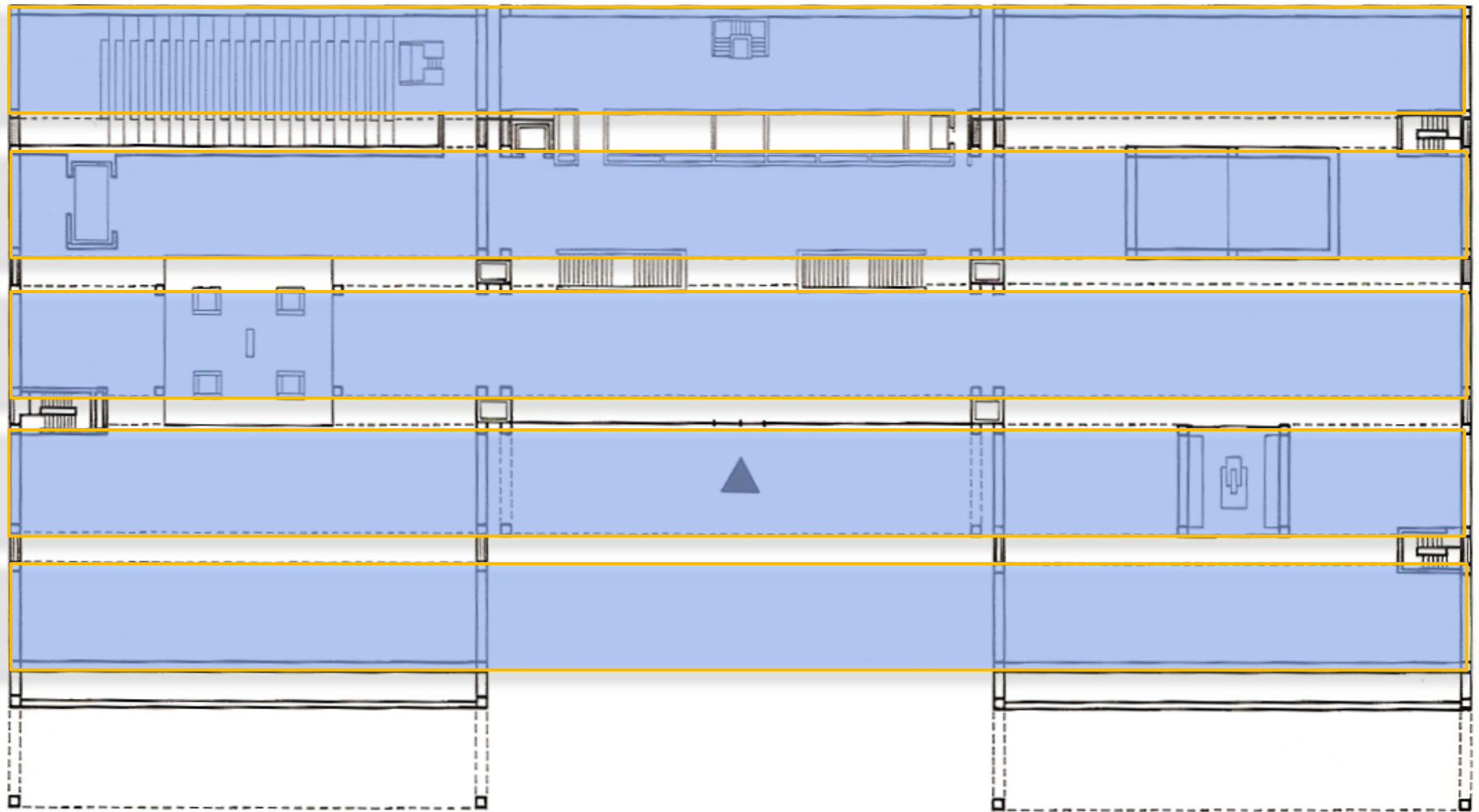
For Kahn, an opportunity to develop an idea
“Served and Service”



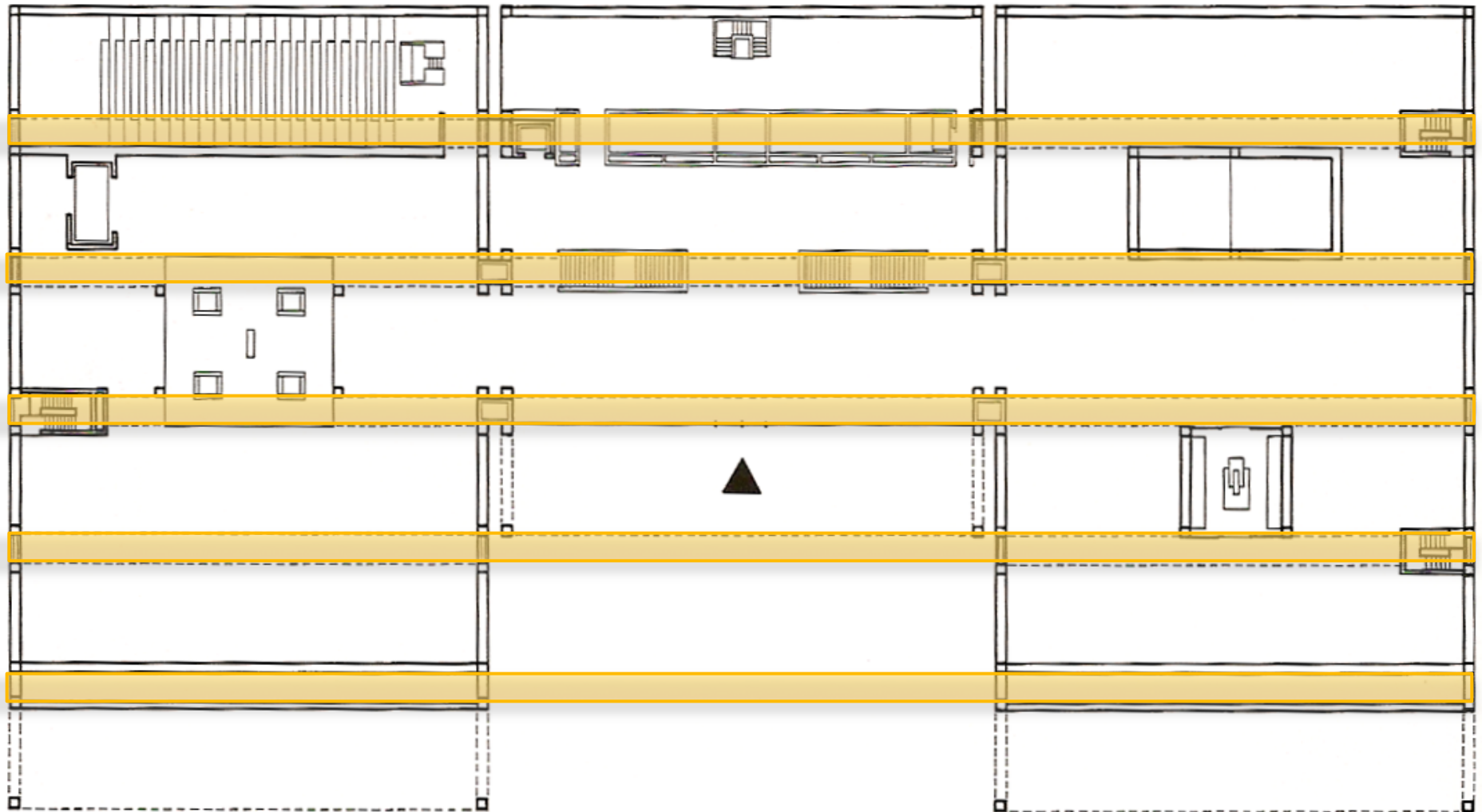
“Served and Service”
clarity made possible by the use of
a tartan grid

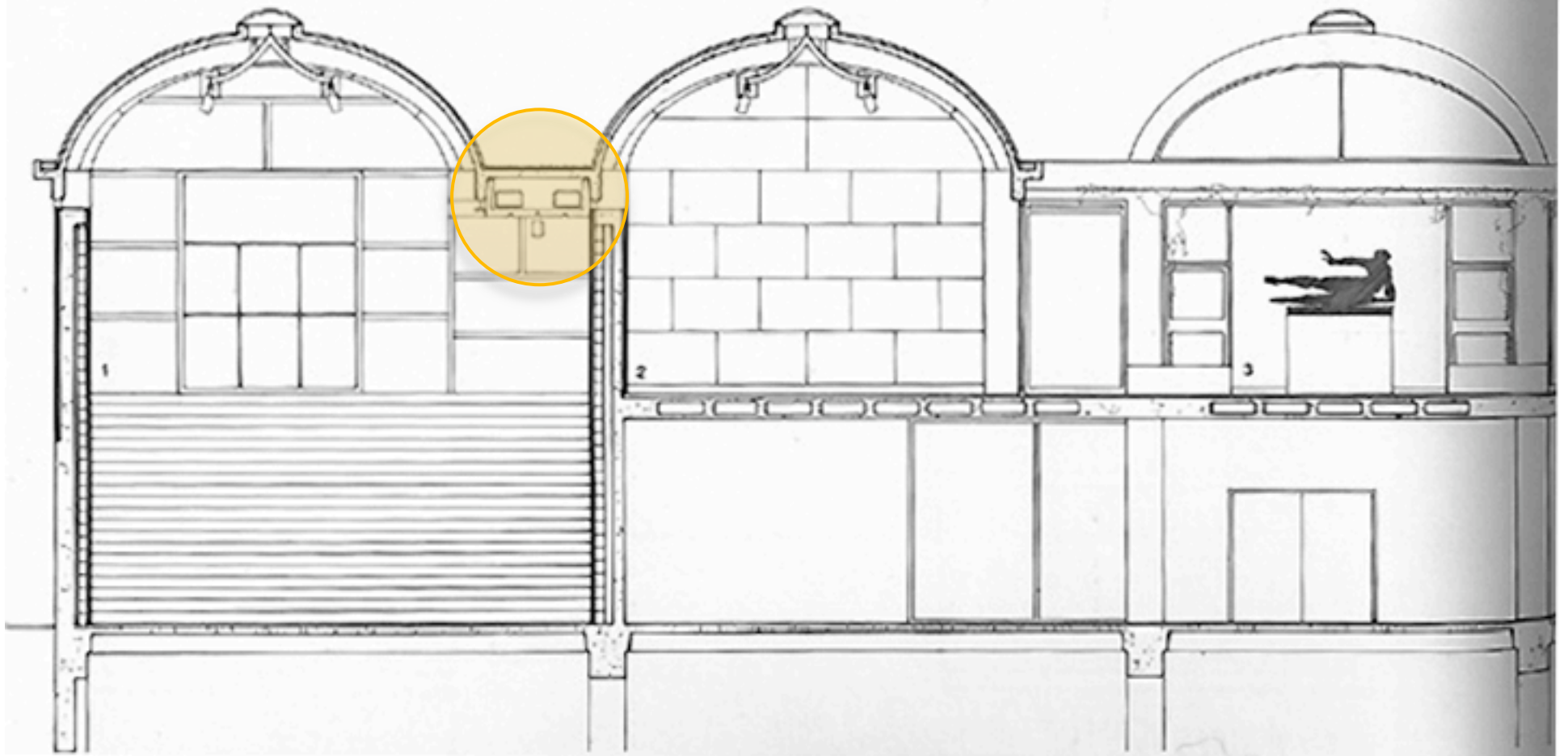


“Served Spaces”
auditorium
galleries

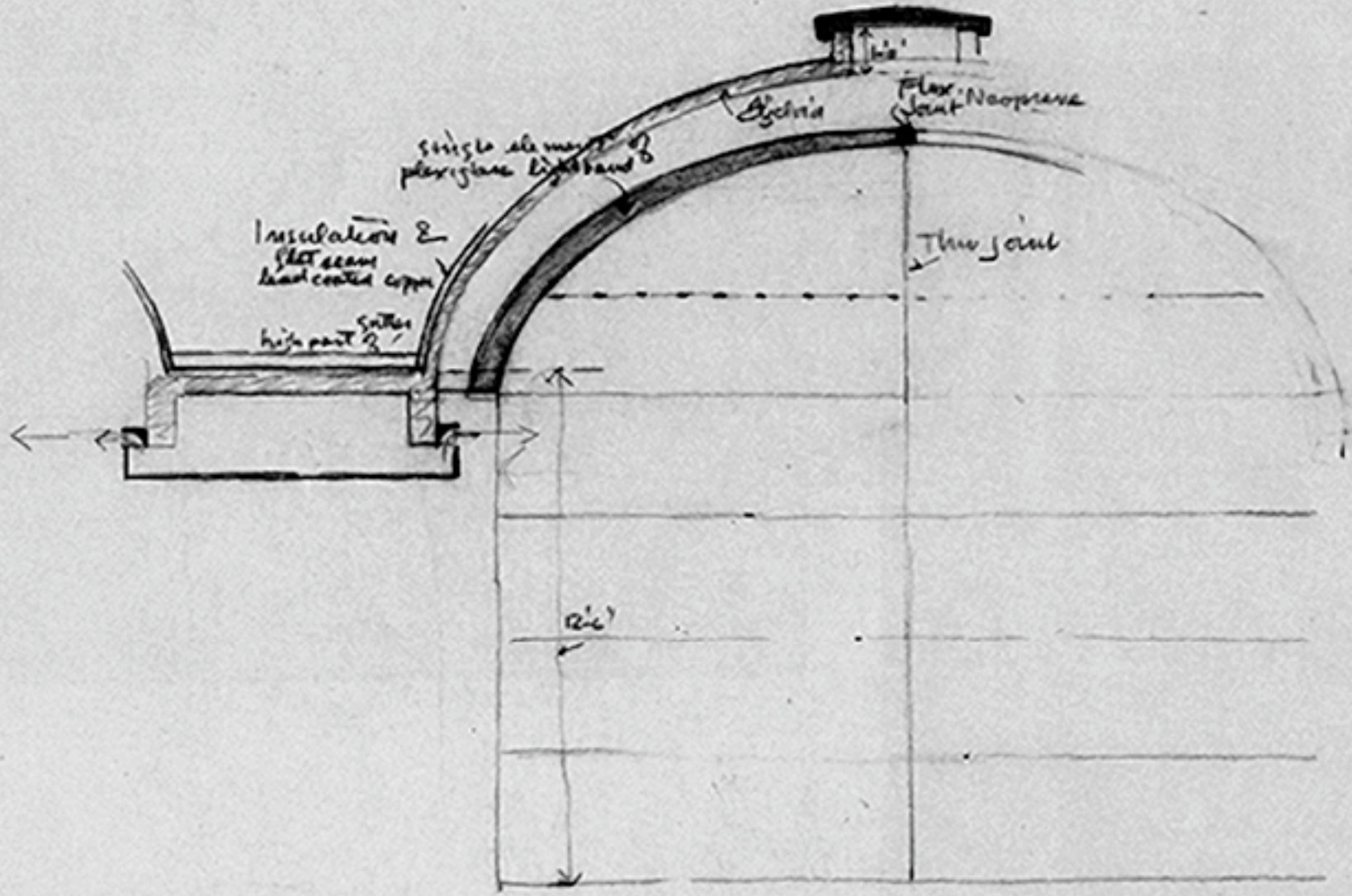


“Service Spaces”
elevator
stairs
duct risers

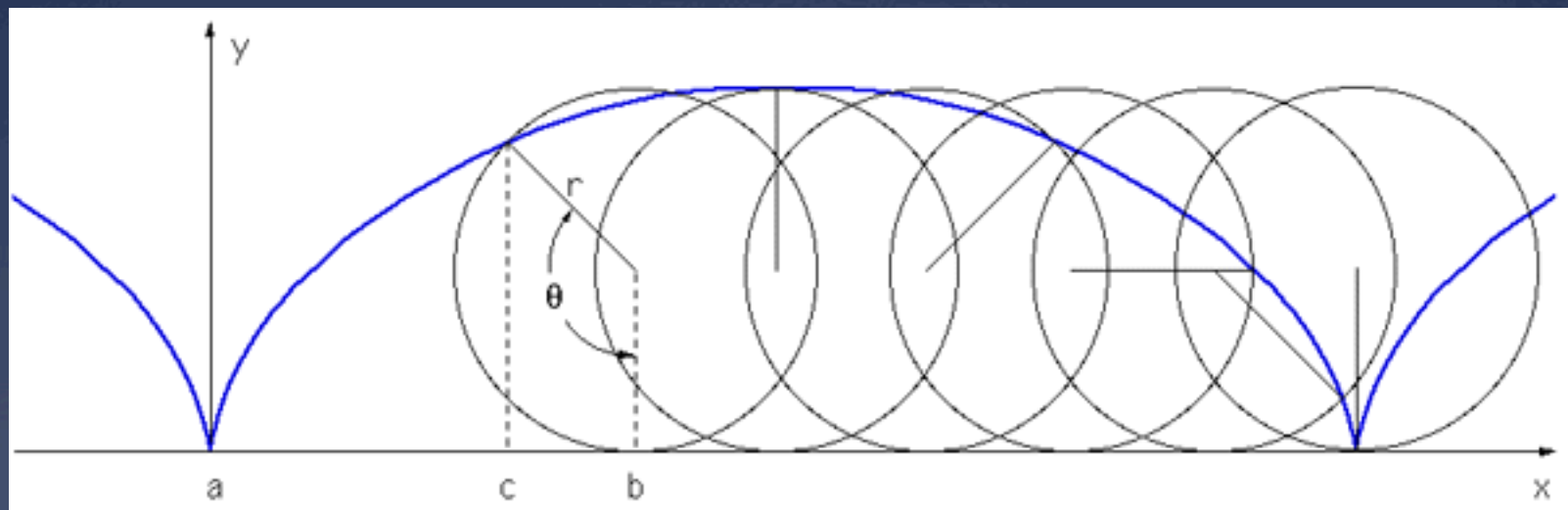


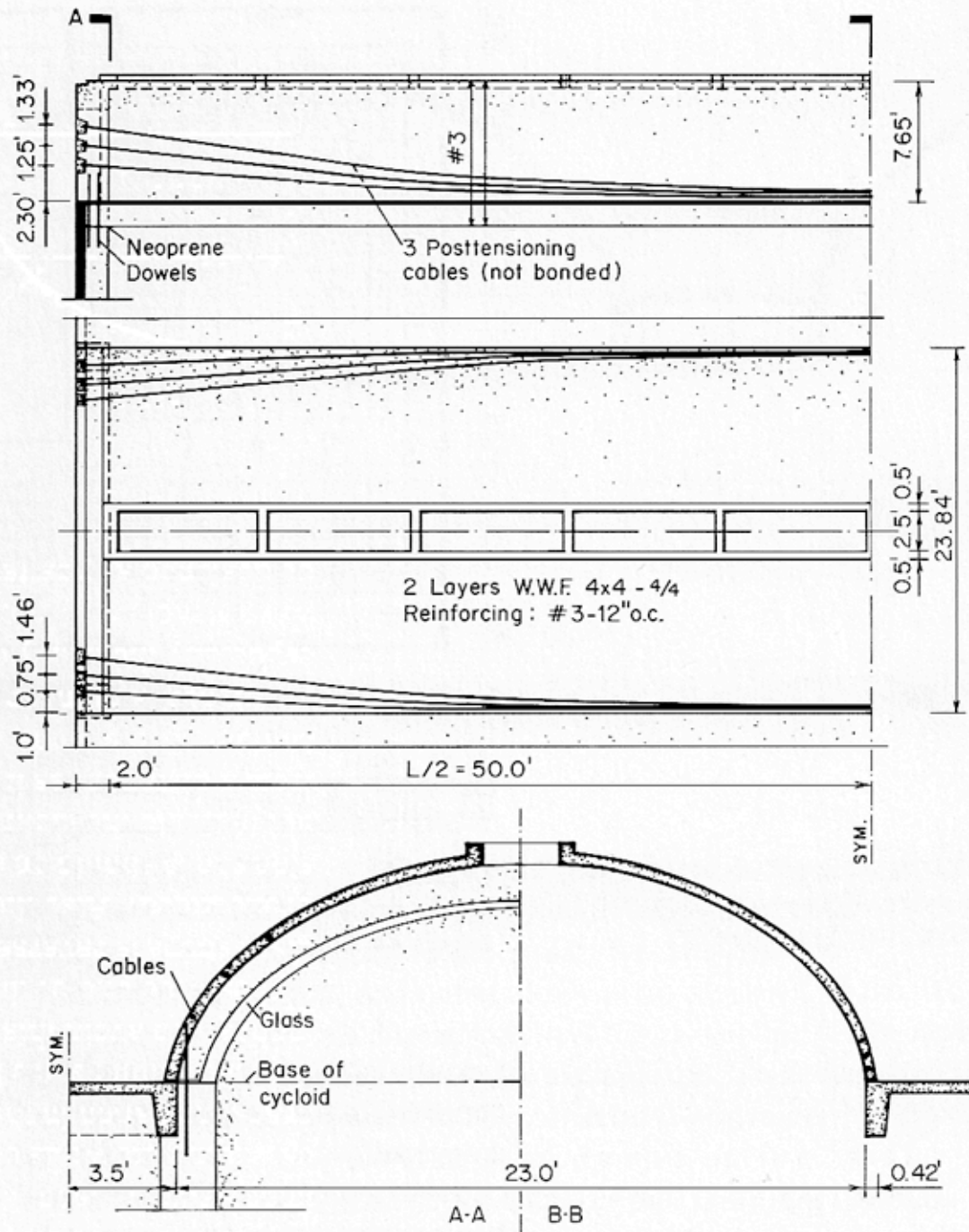






3 | 2.50
8









“Served and Service” in section

