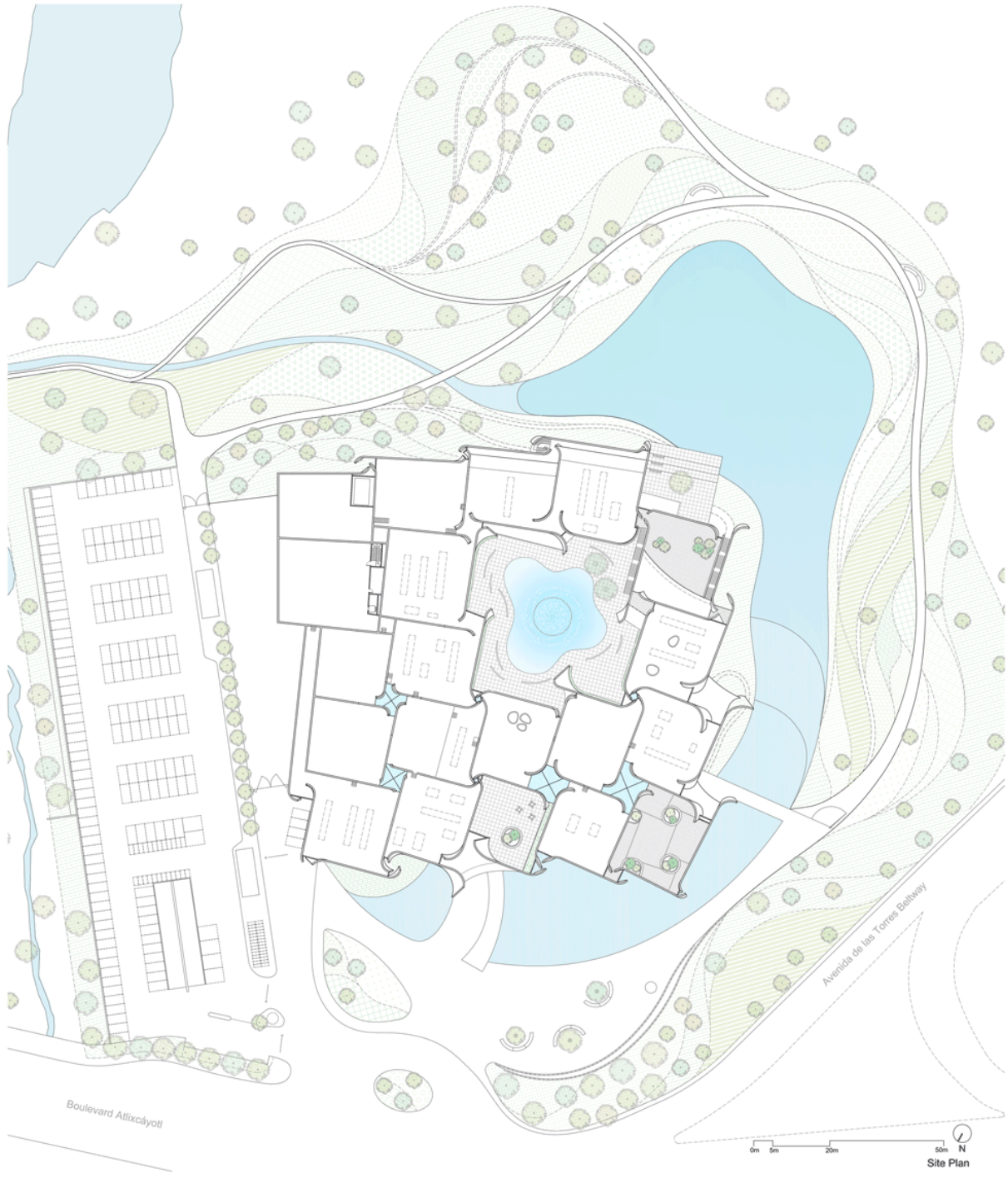


Ito's precast formwork

Museo Internacional
del Barroco, Puebla,
Mexico



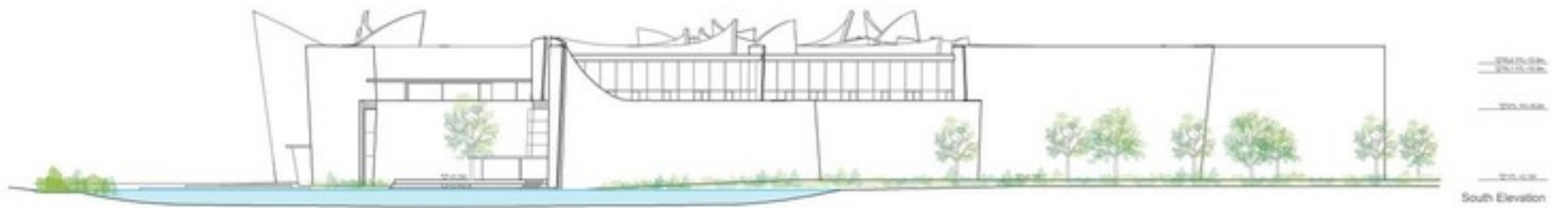


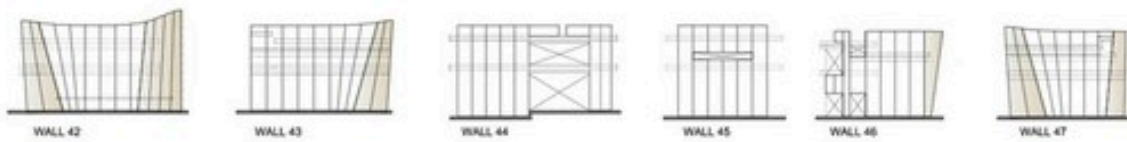
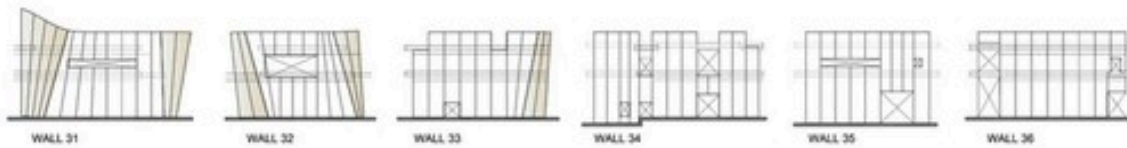
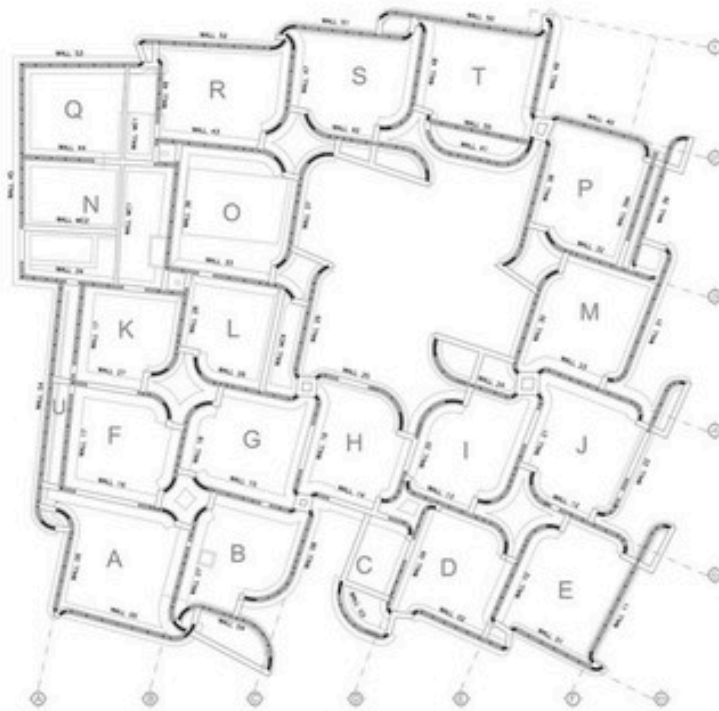






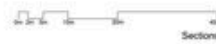
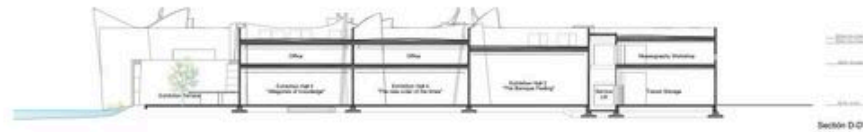
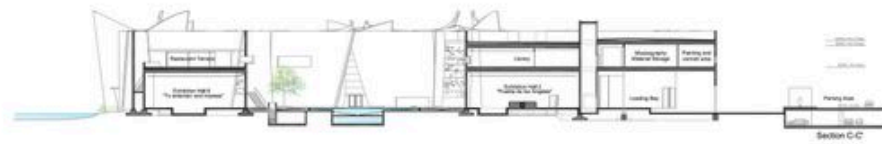
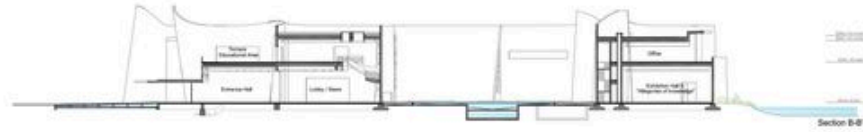
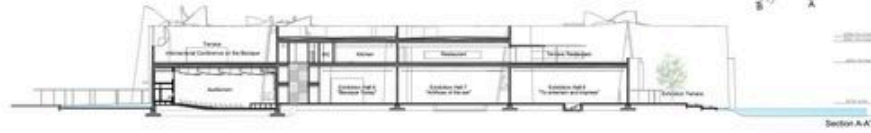


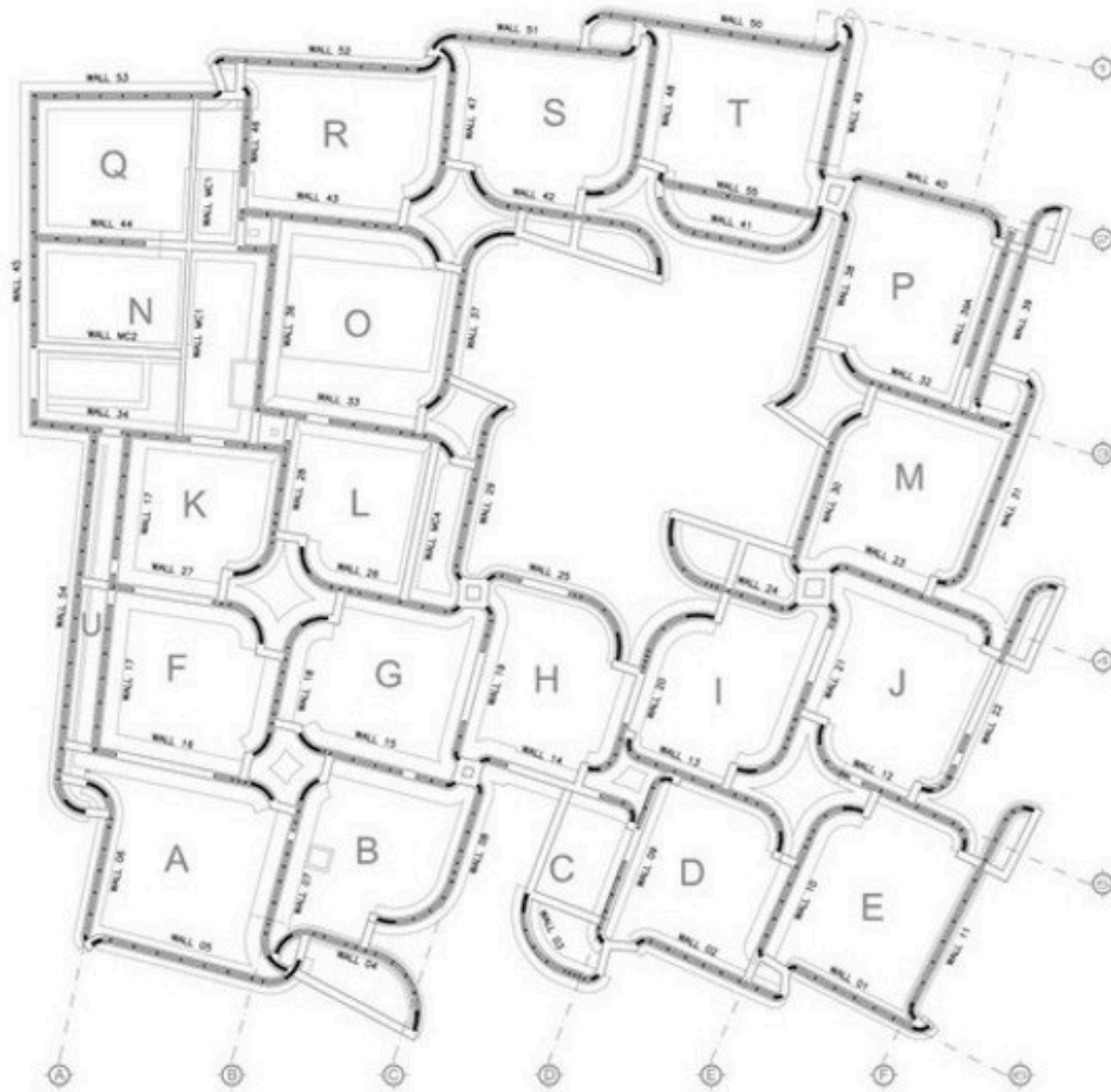


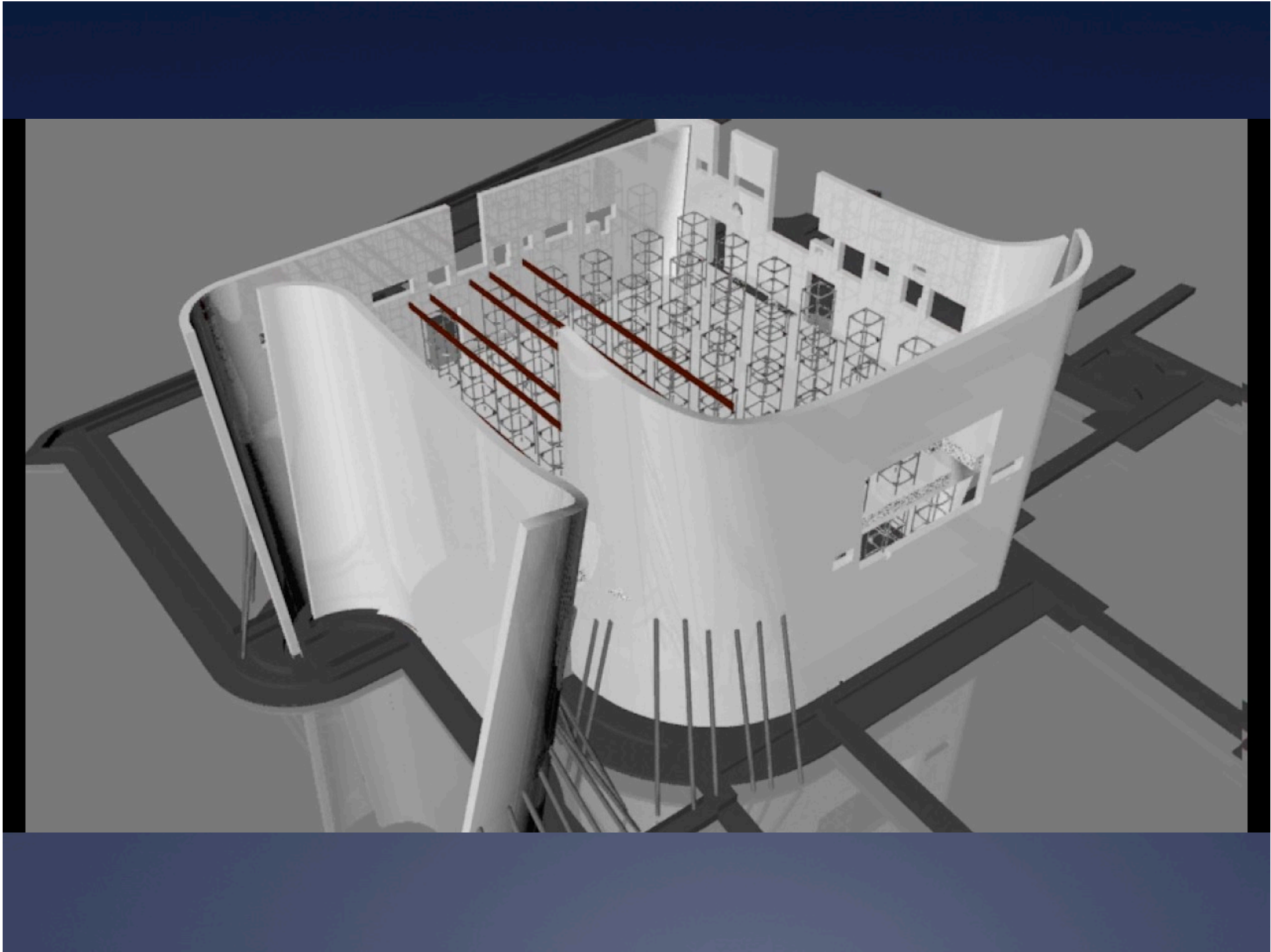


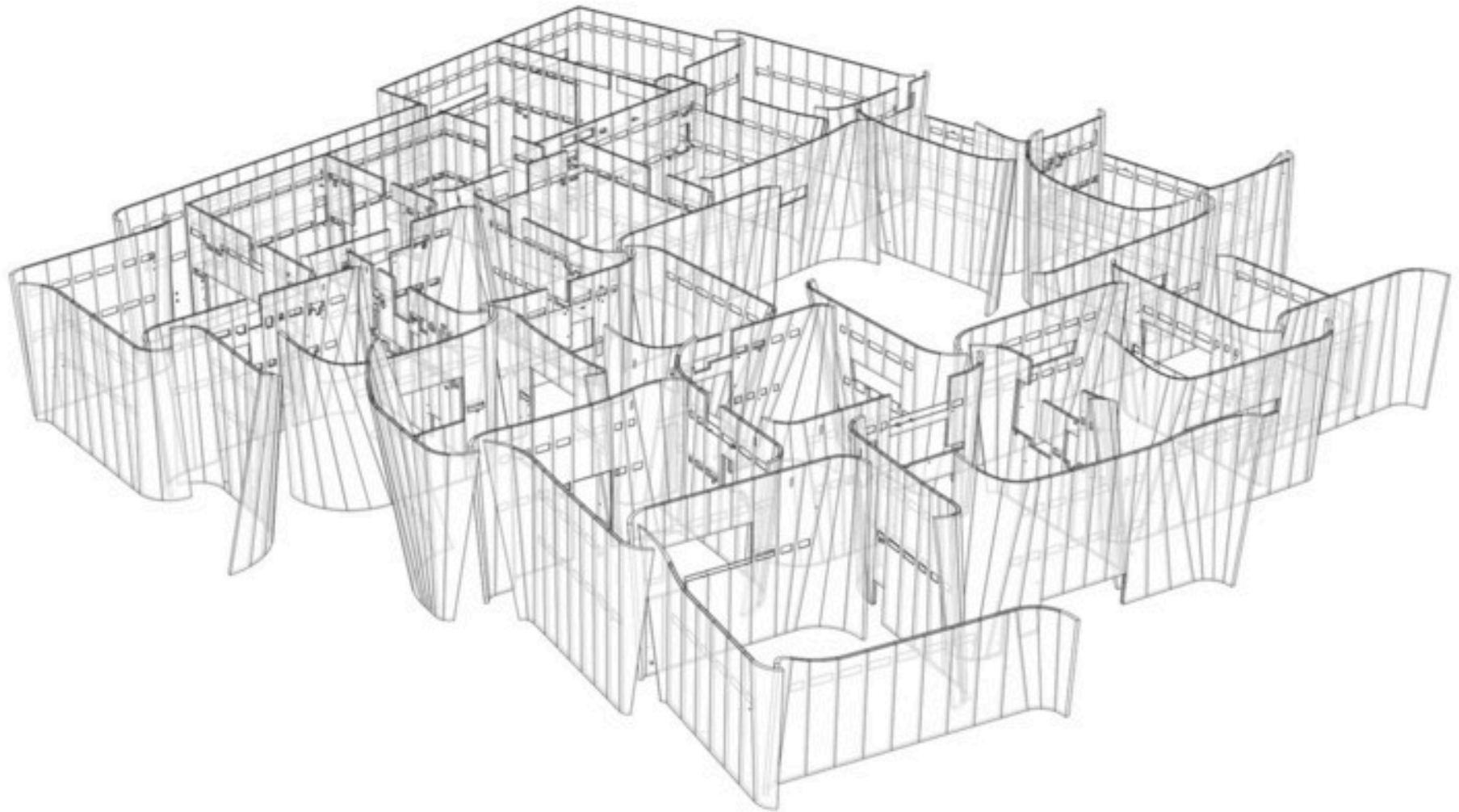
Wall segments up to 49 feet tall











Finding the similar and different in 55 walls (701 panels)









Two panels each 14 inches thick make the formwork... couldn't withstand vibration...had to use self-leveling concrete



Bubble slab makes the floor lighter to span farther





















