

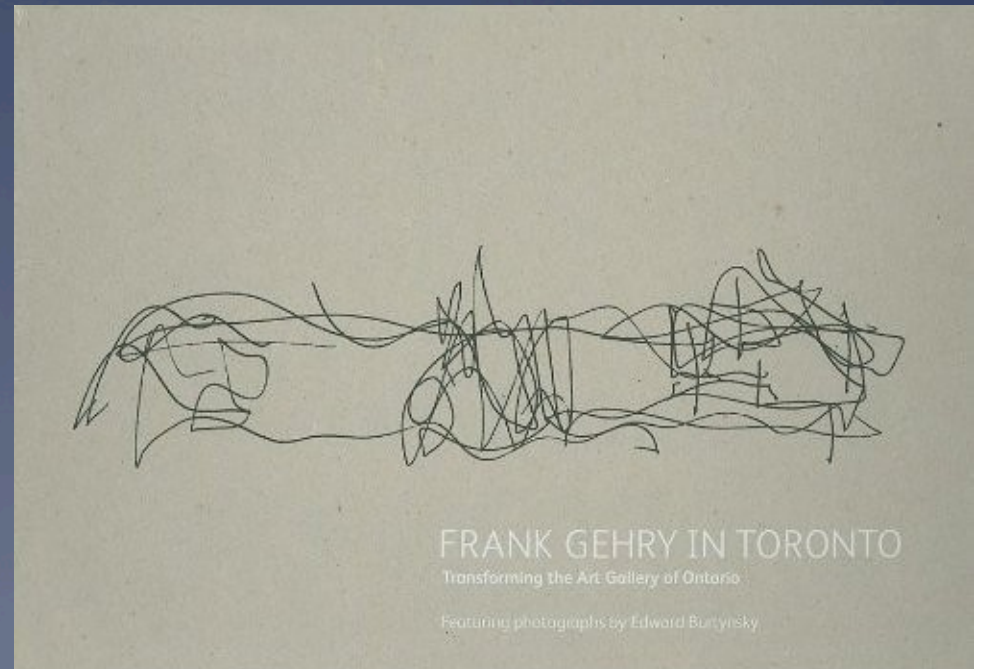
A Wooden World

AGO Toronto

(art gallery ontario)

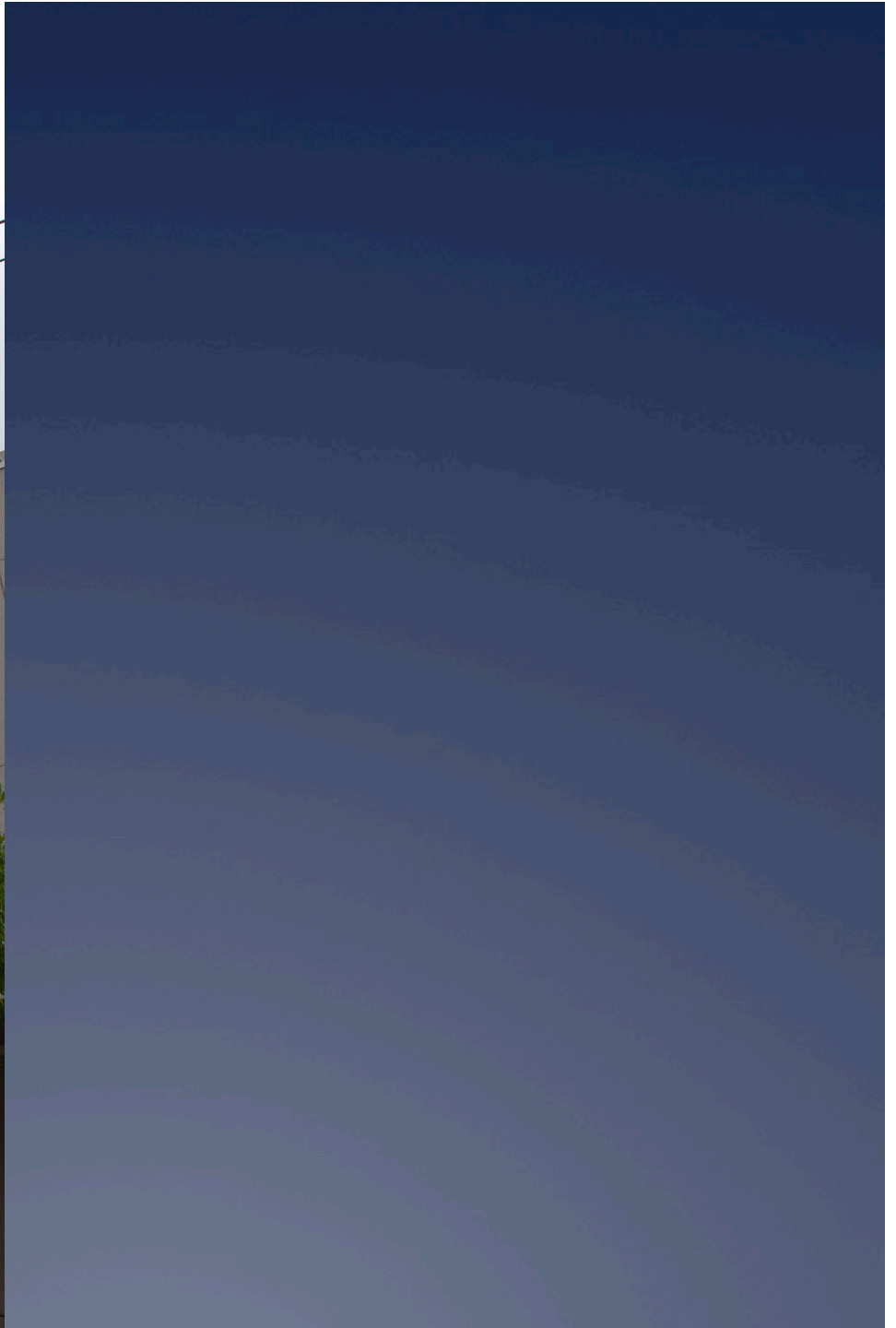
F.O.G. architects

Presentation focus on the Galleria Italia
97,000 s.f. addition
538,000 total s.f.

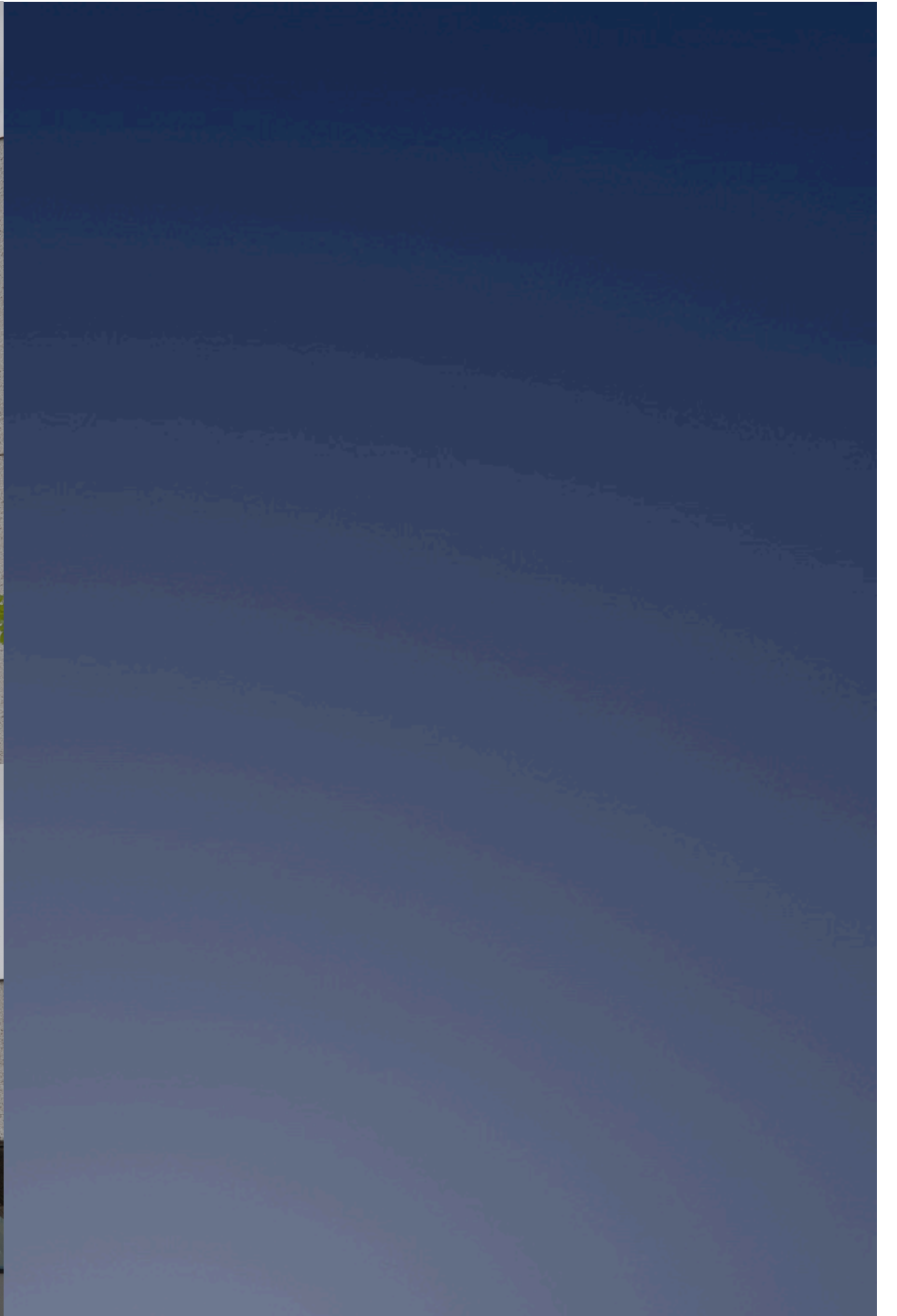


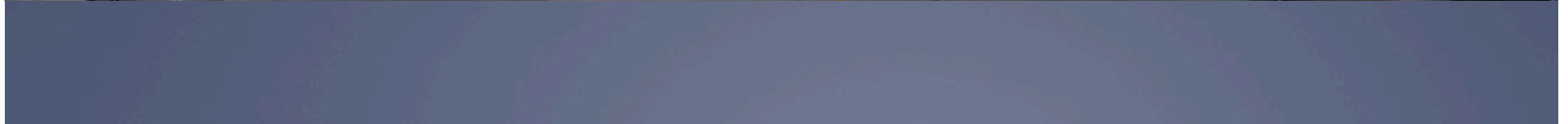














Douglas Fir is the dominant material





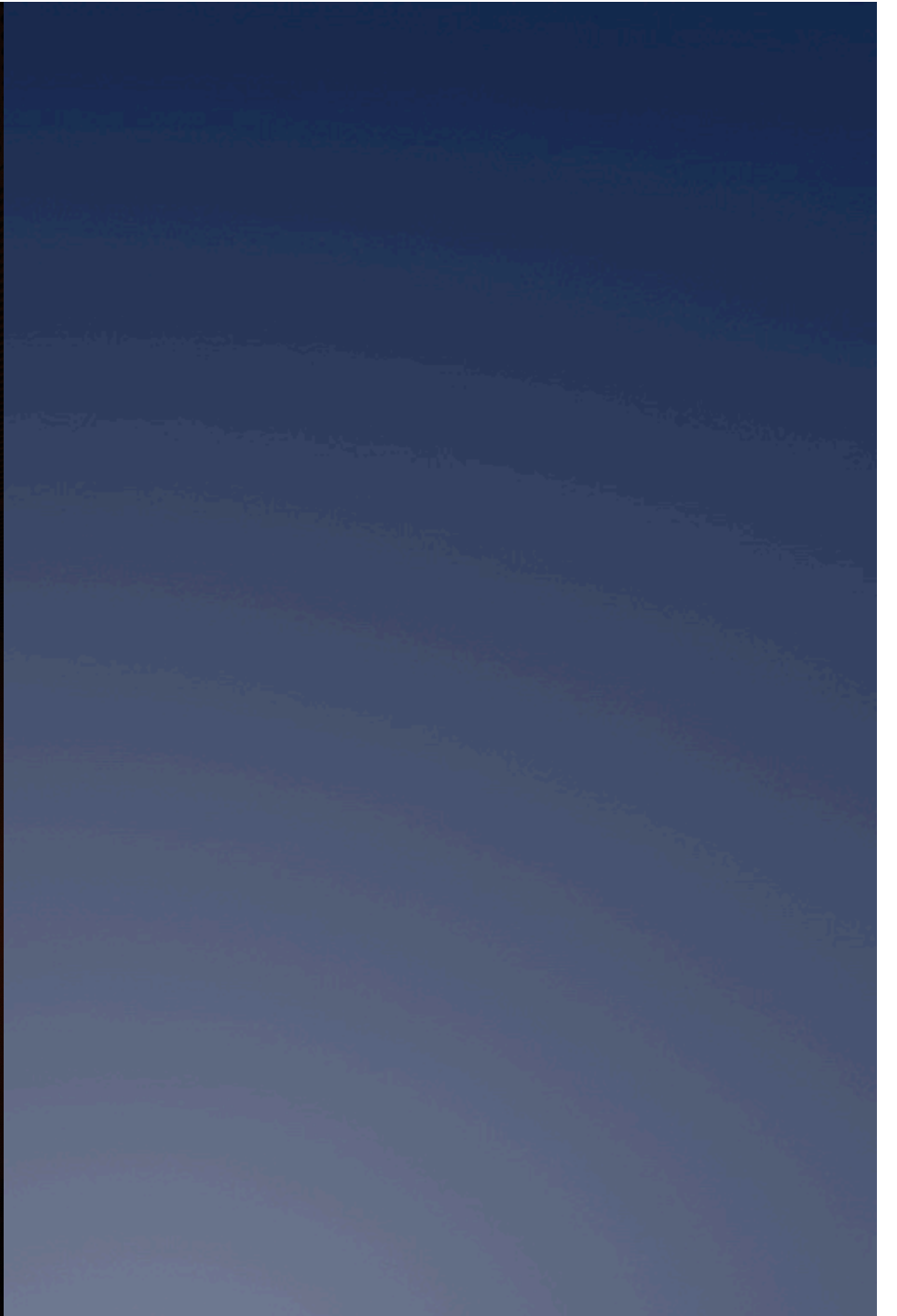




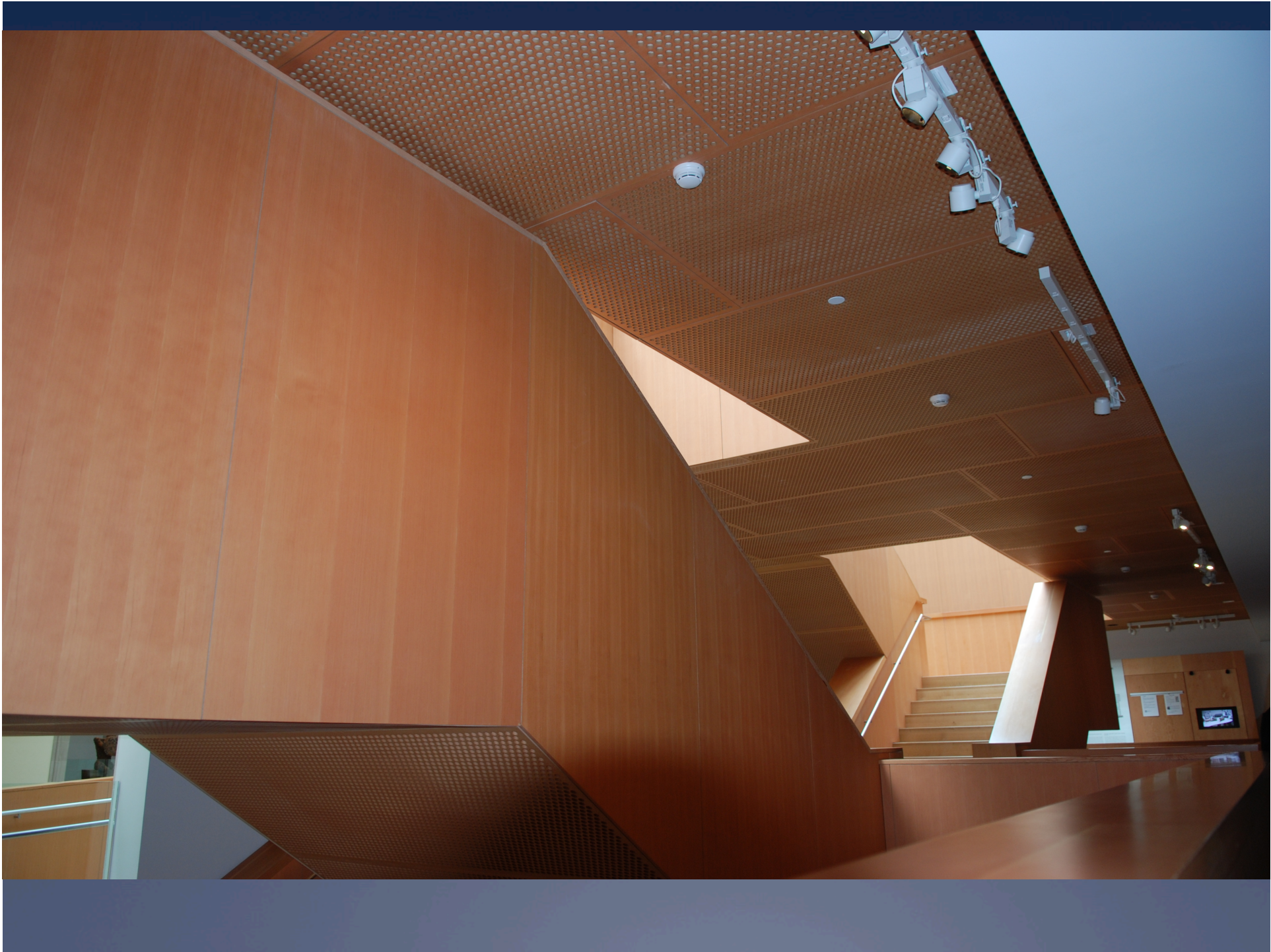


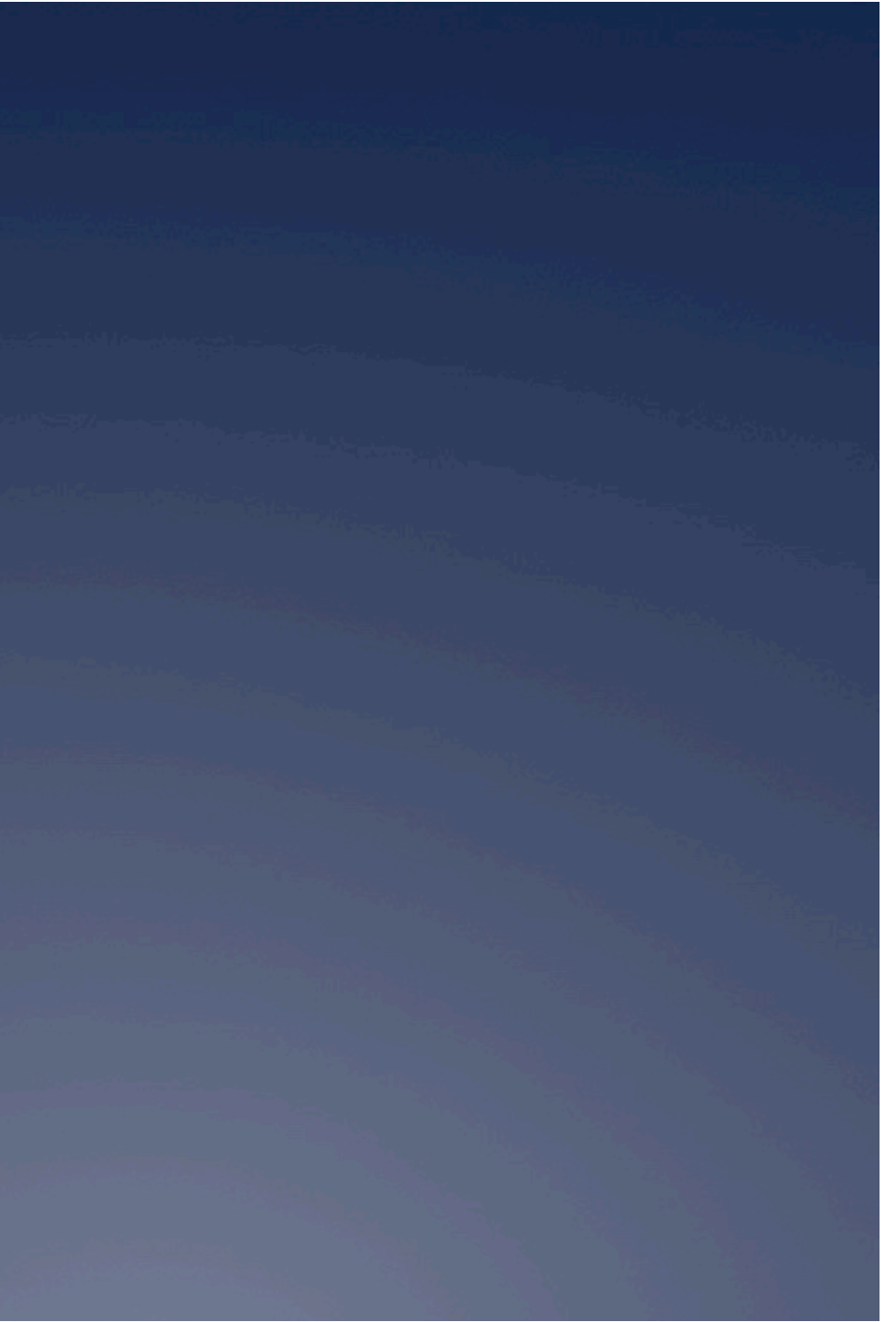




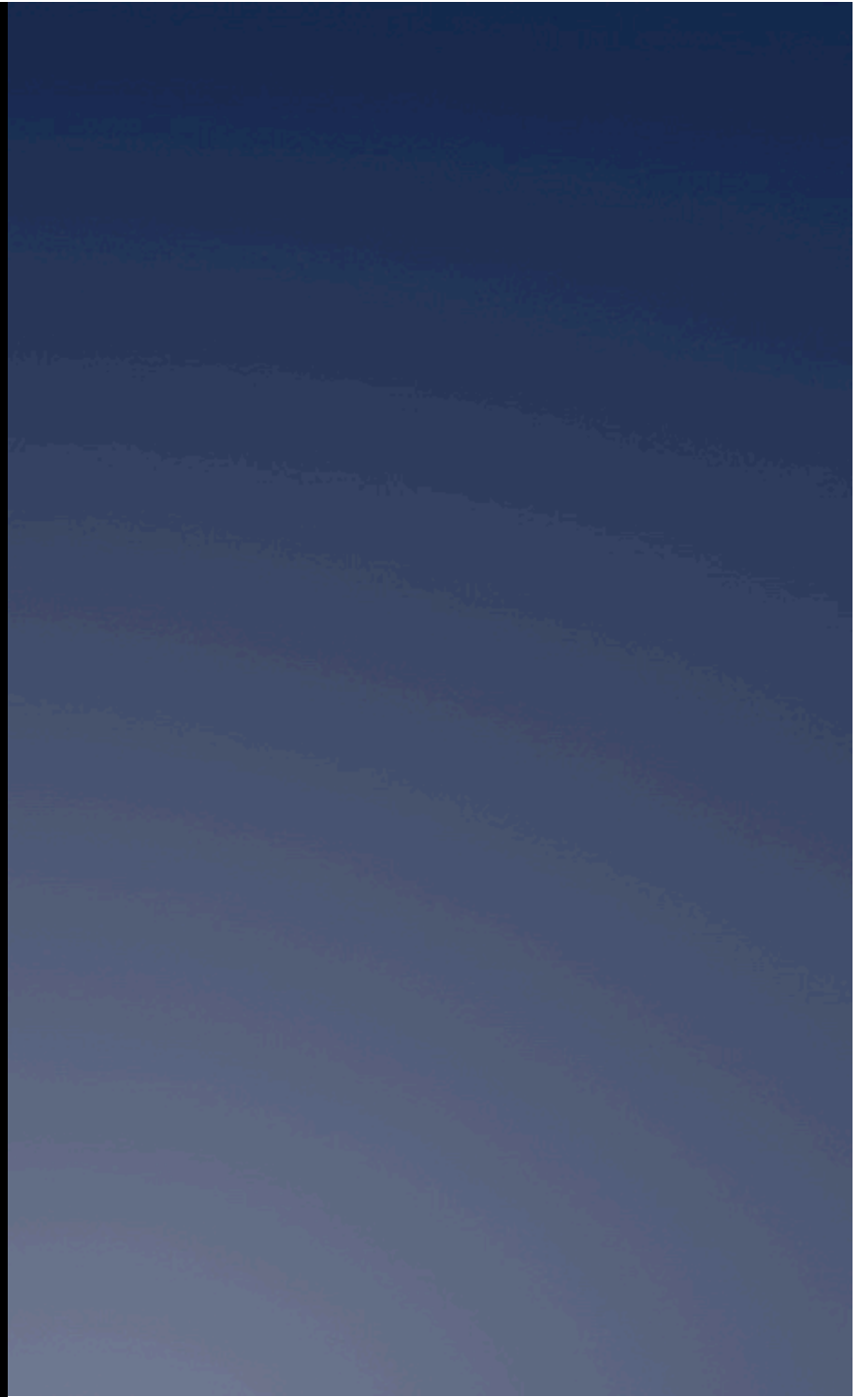
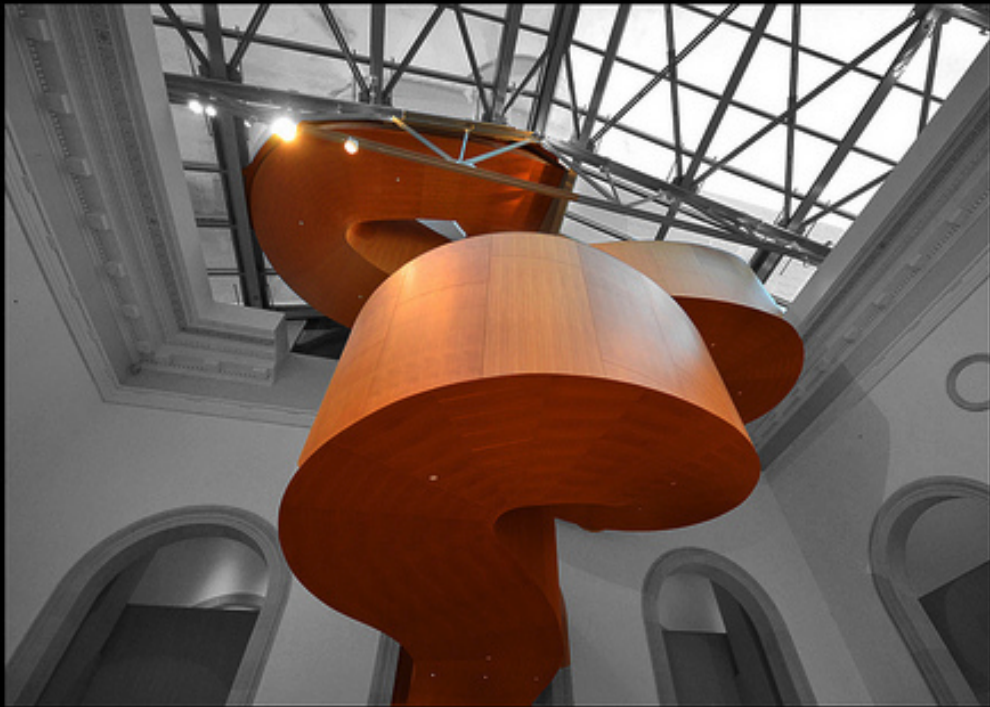
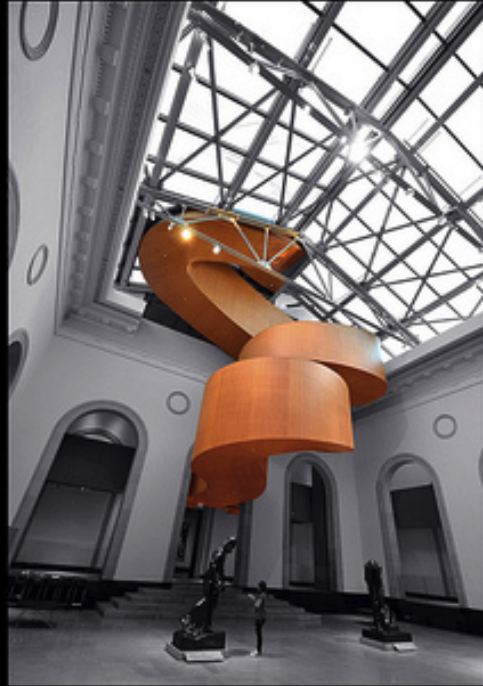




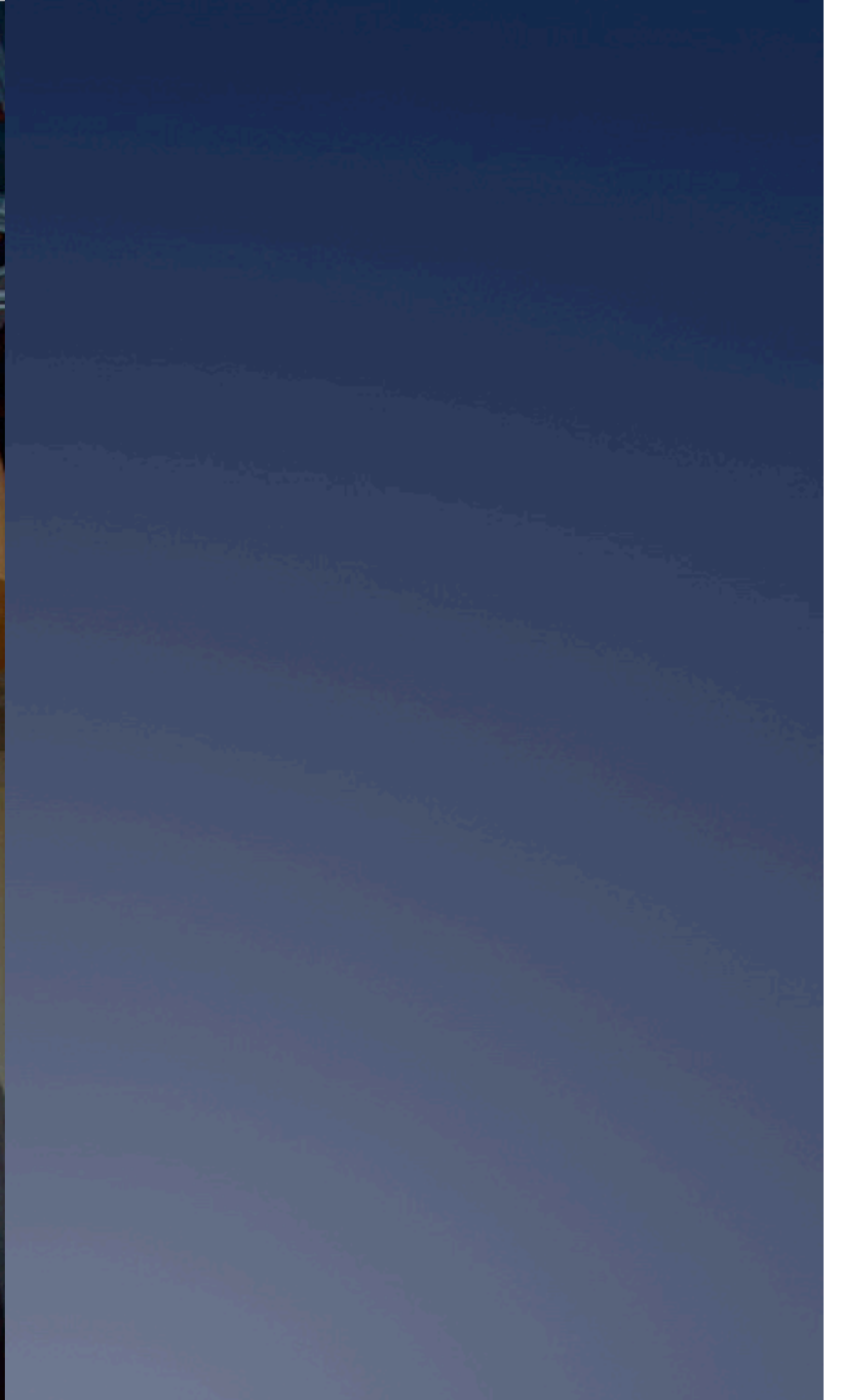


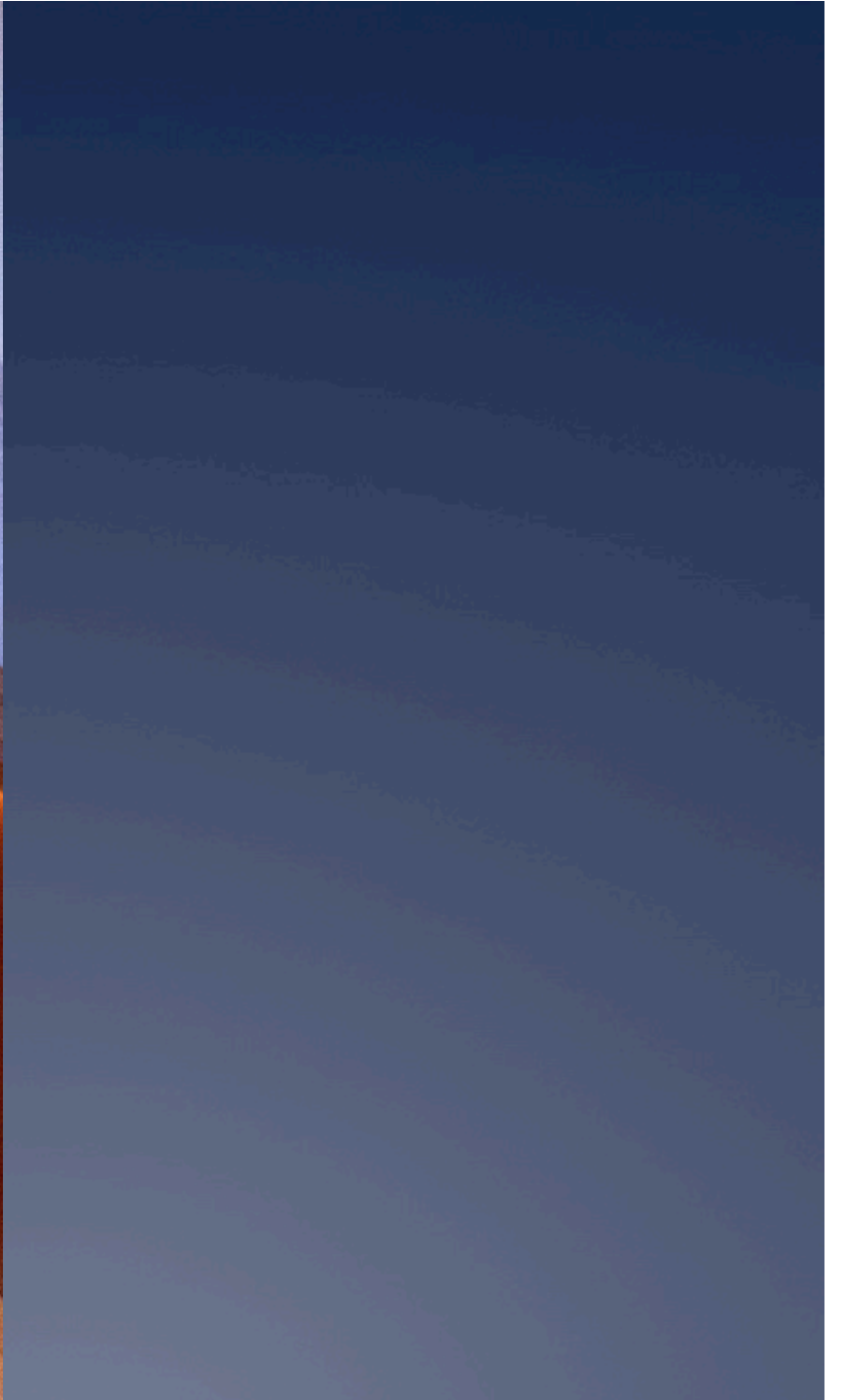


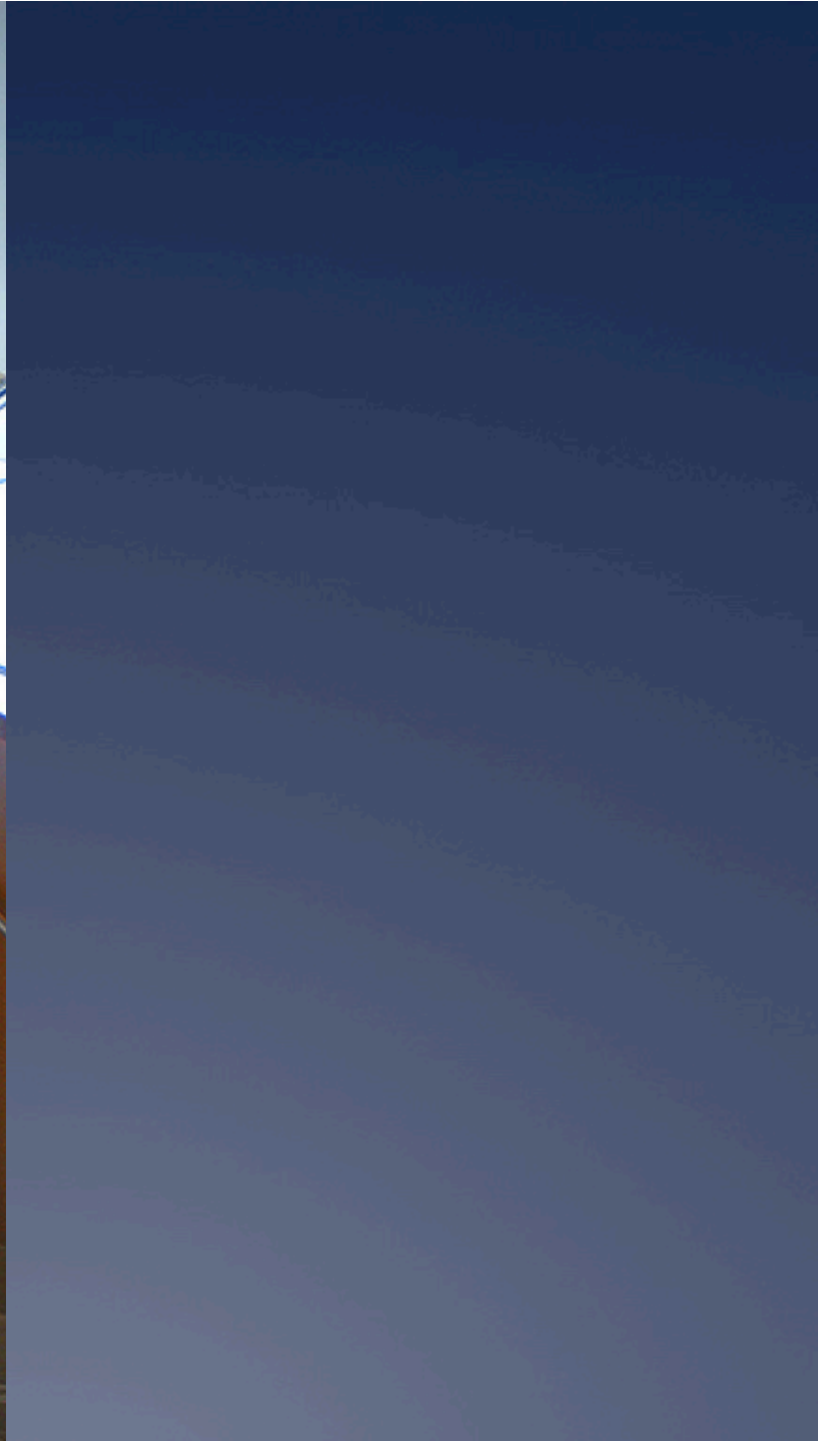


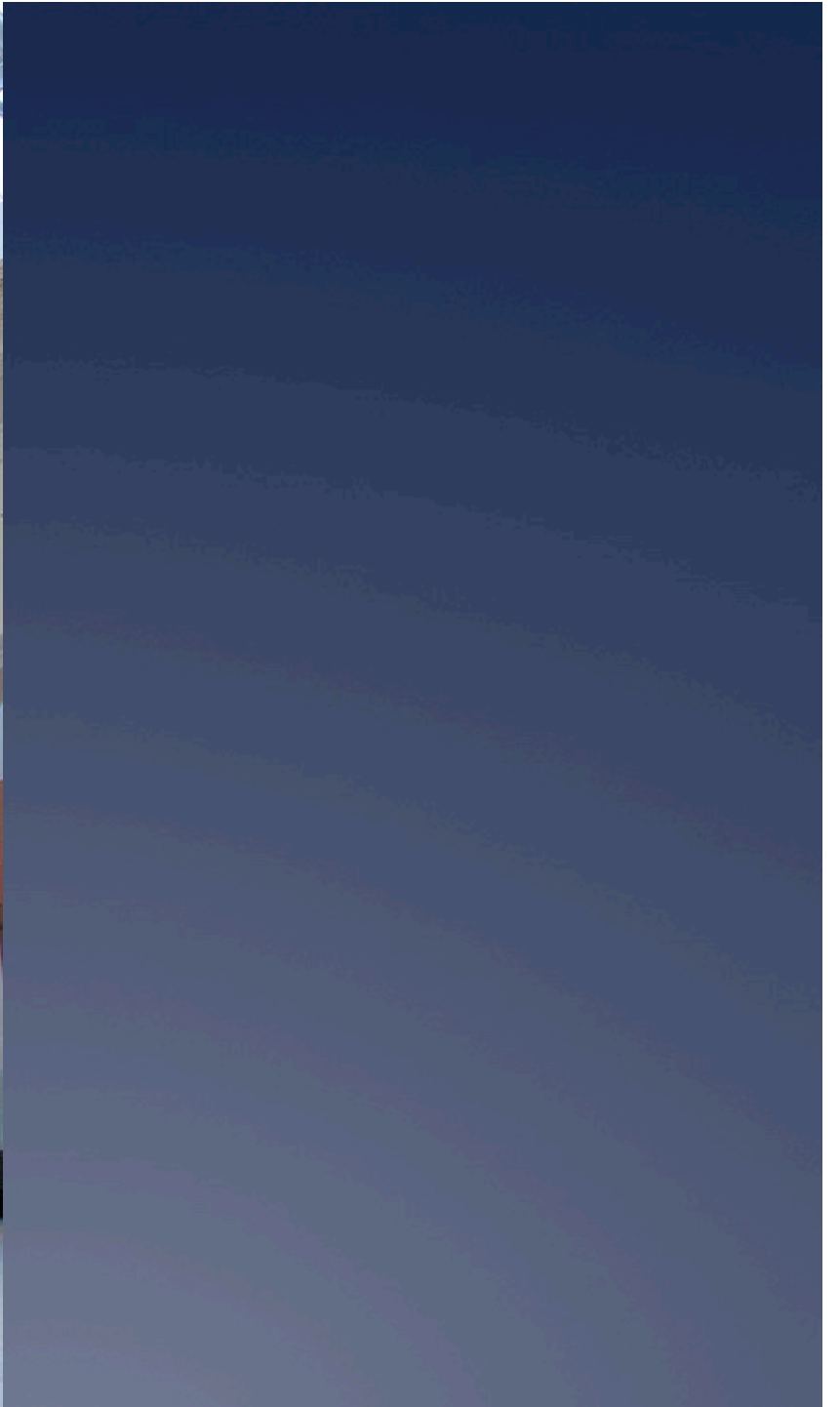


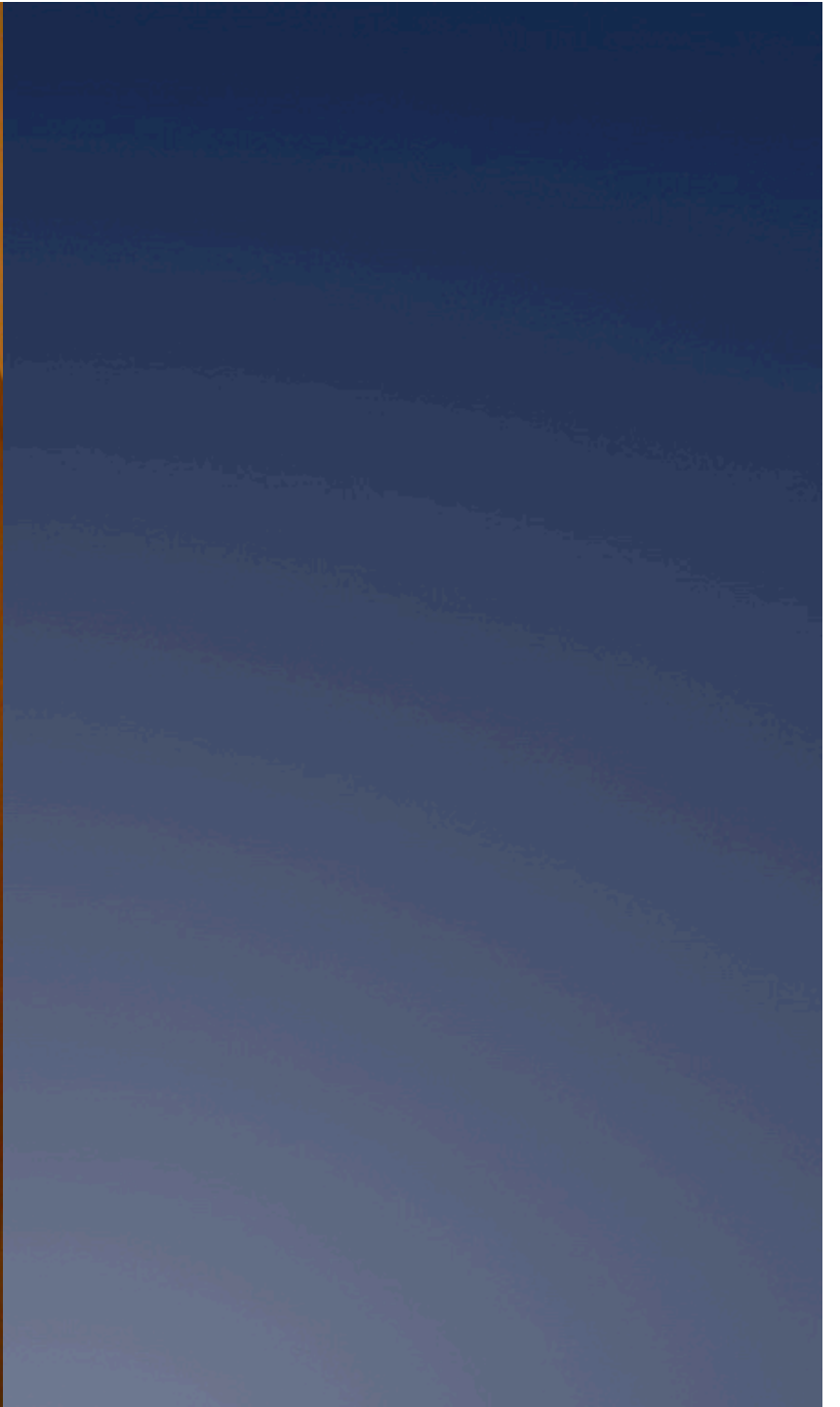








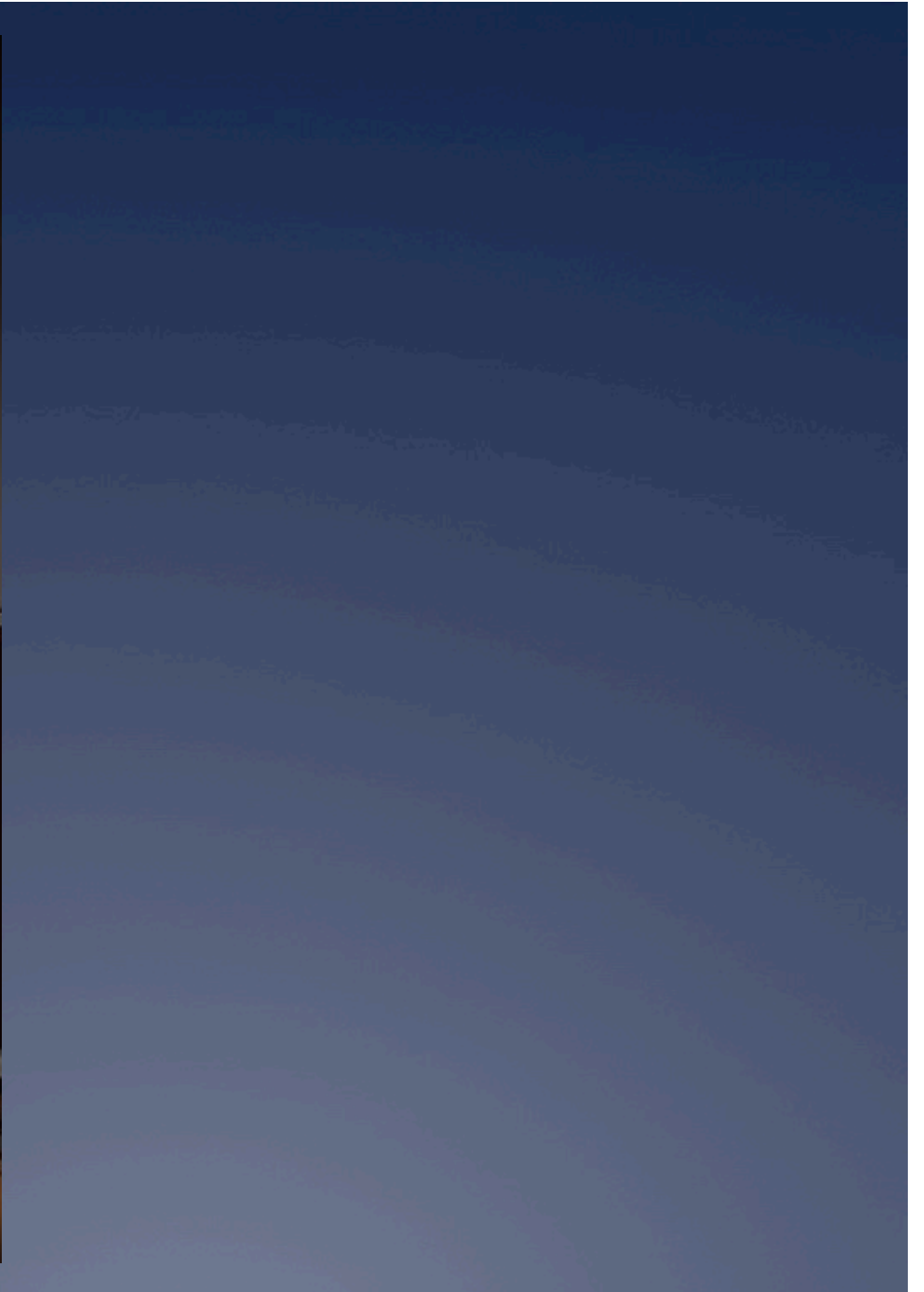
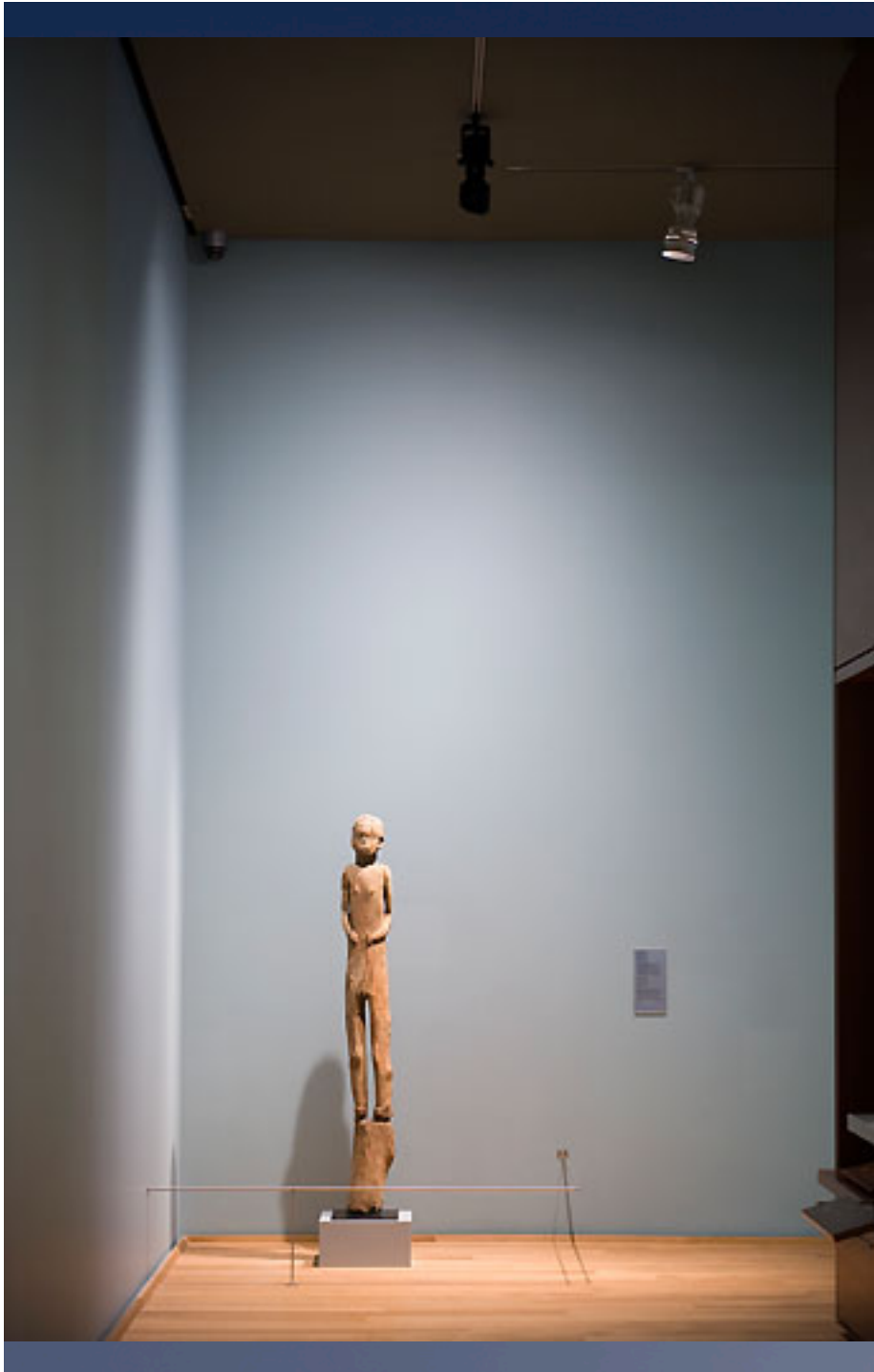


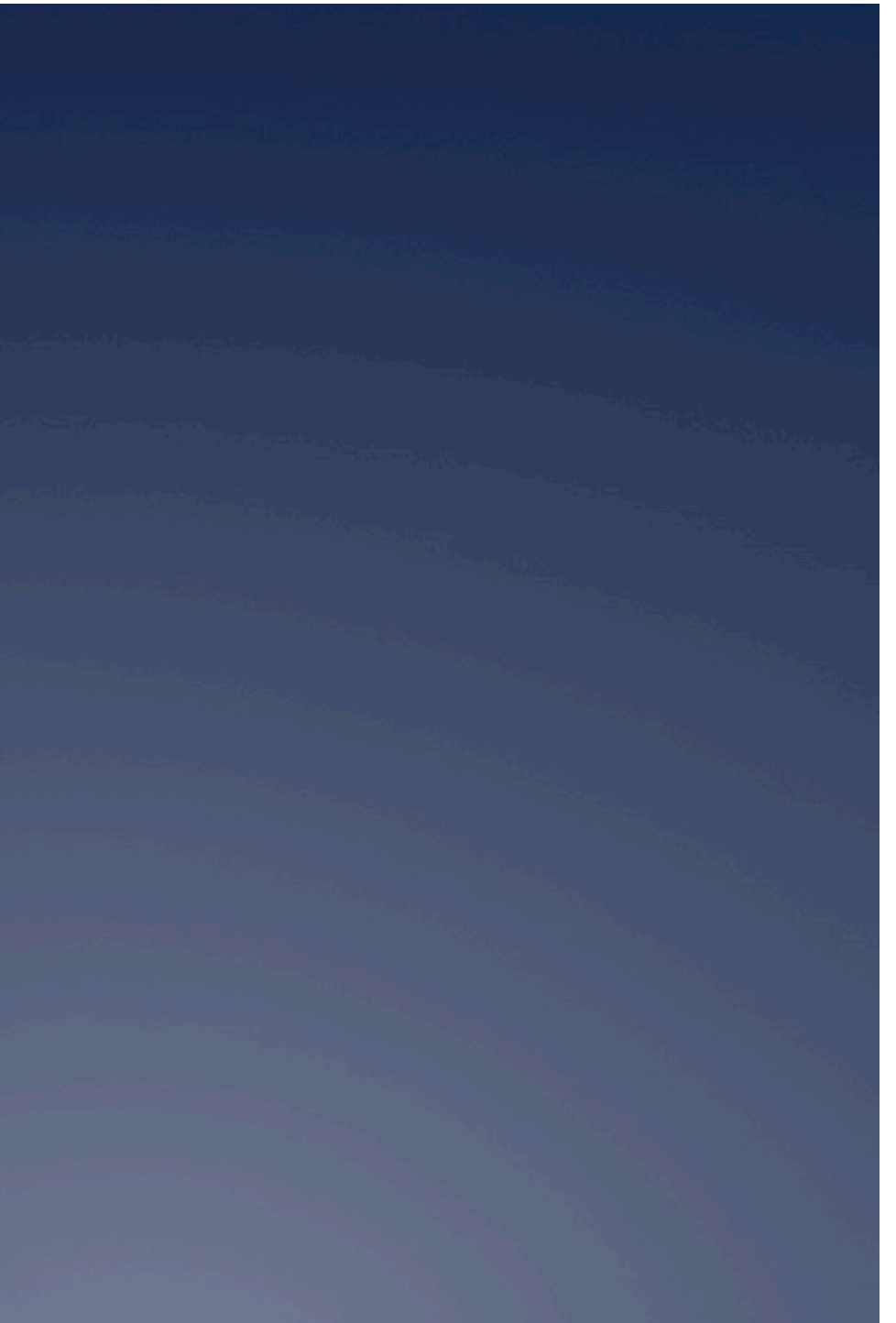


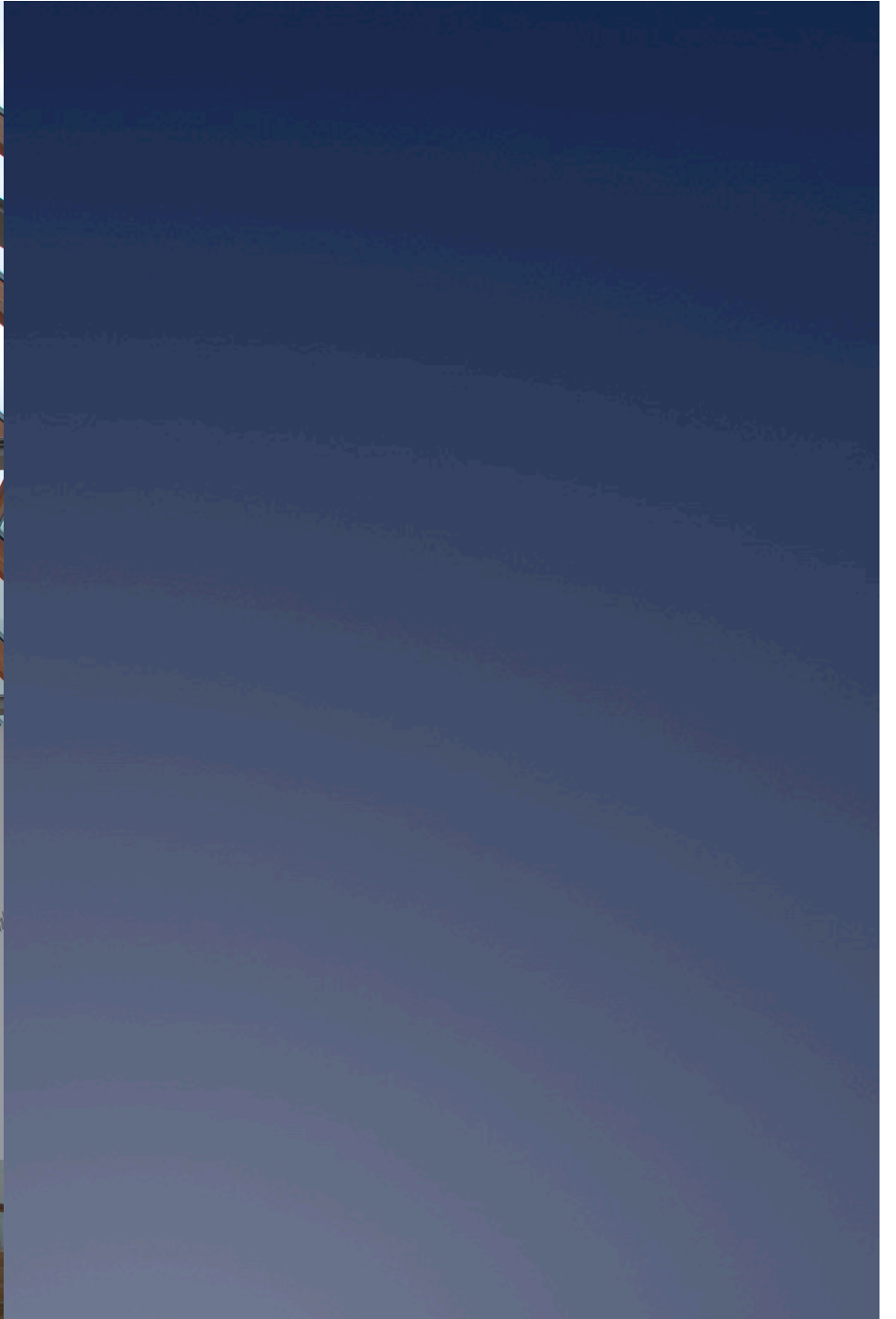


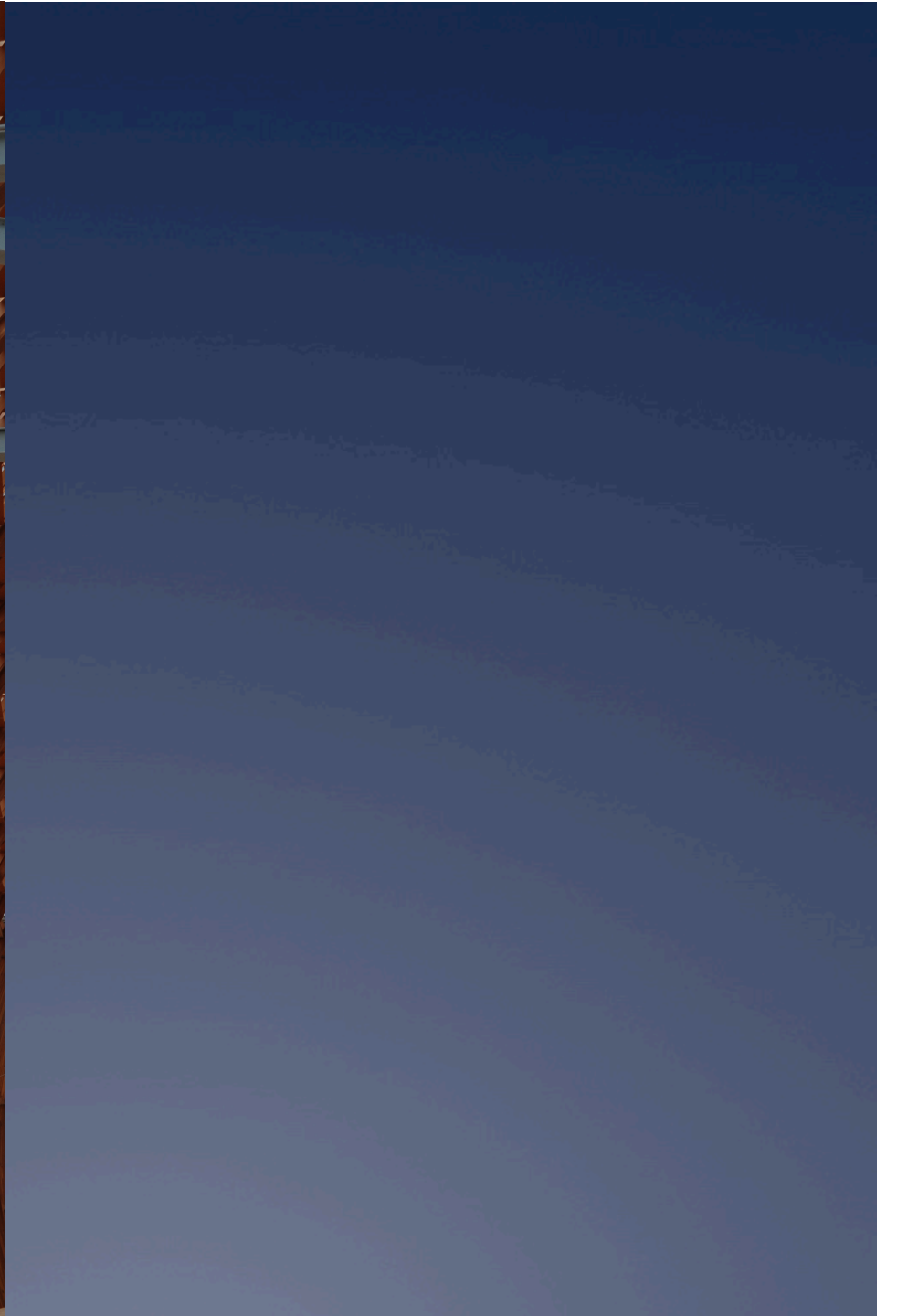


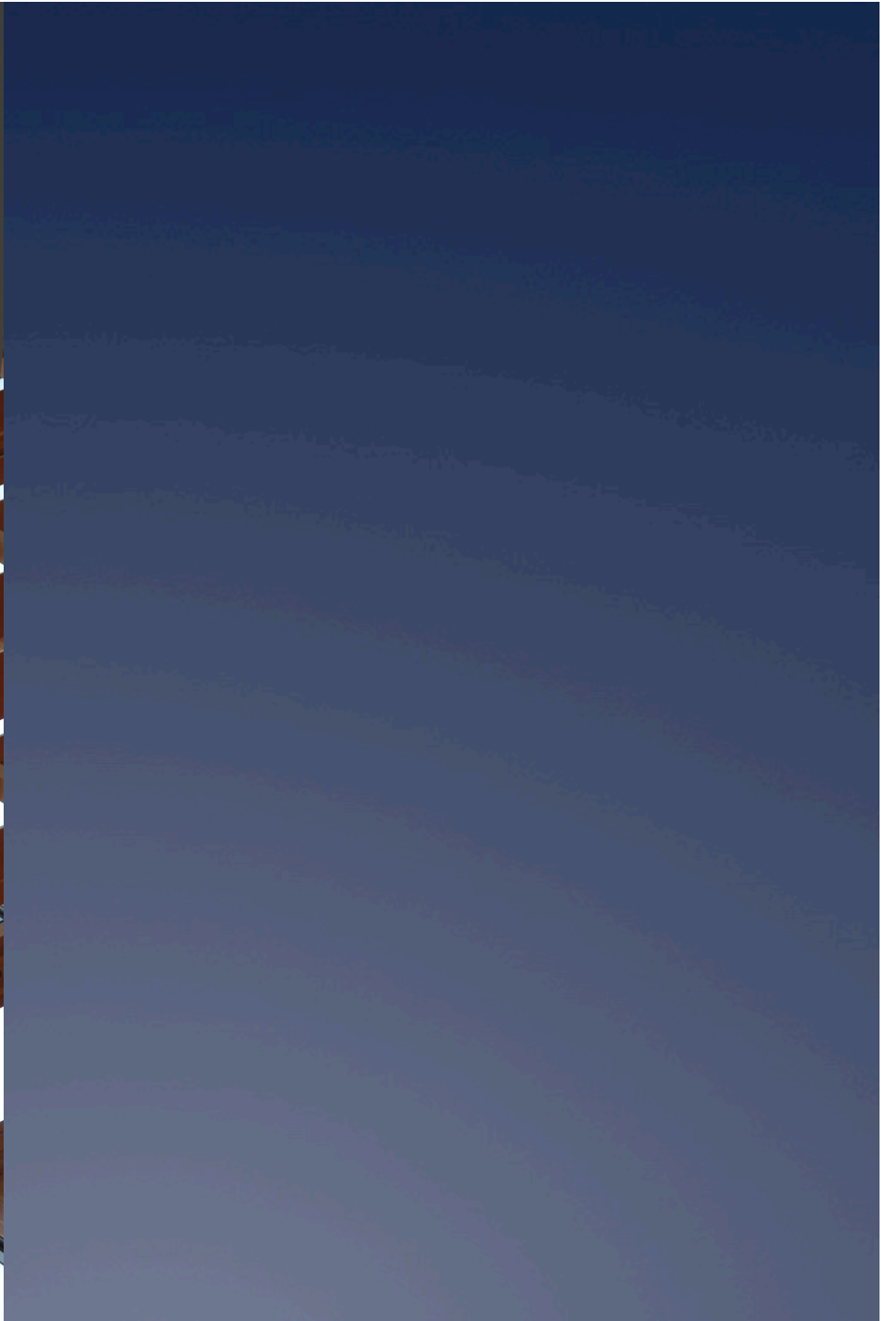
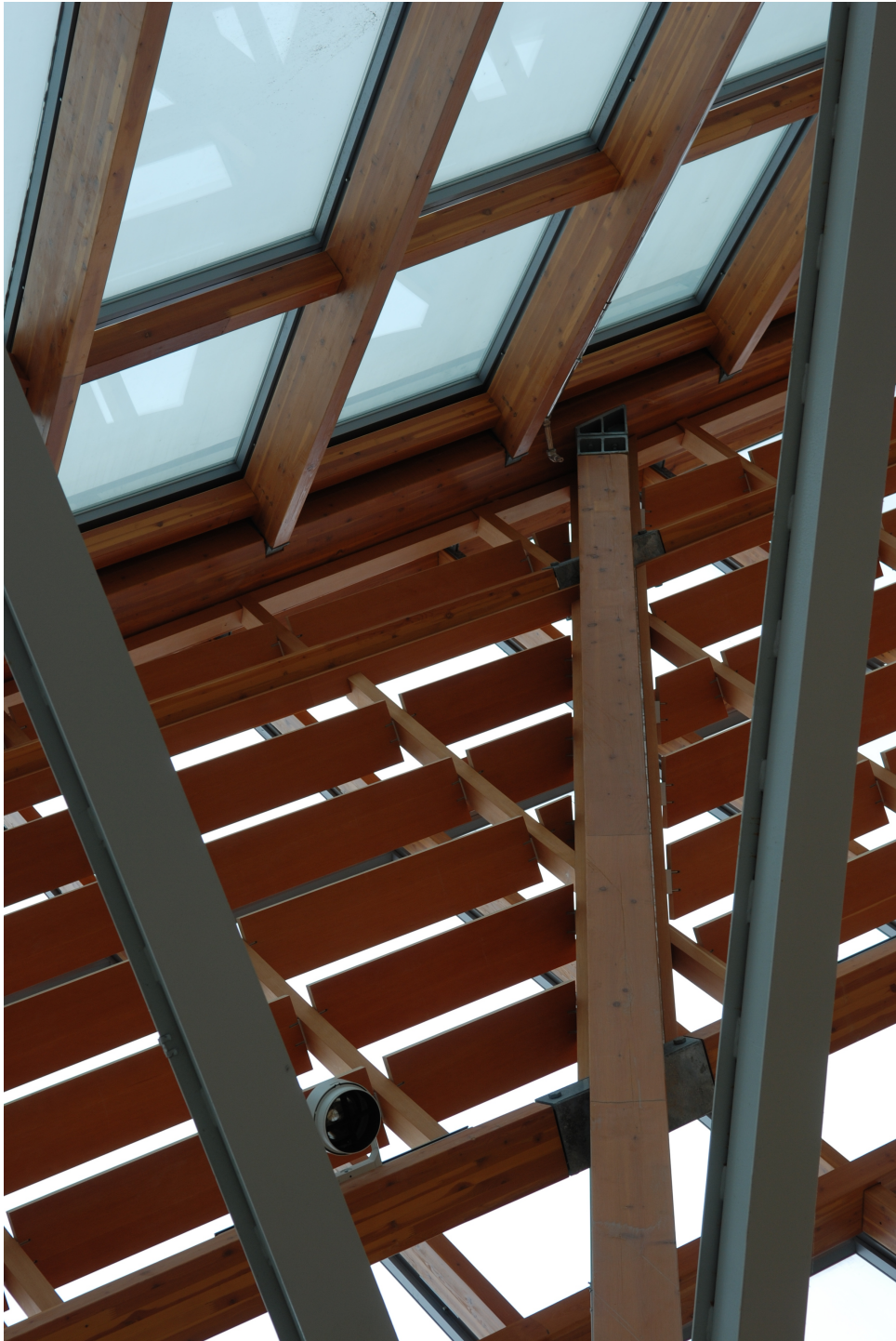


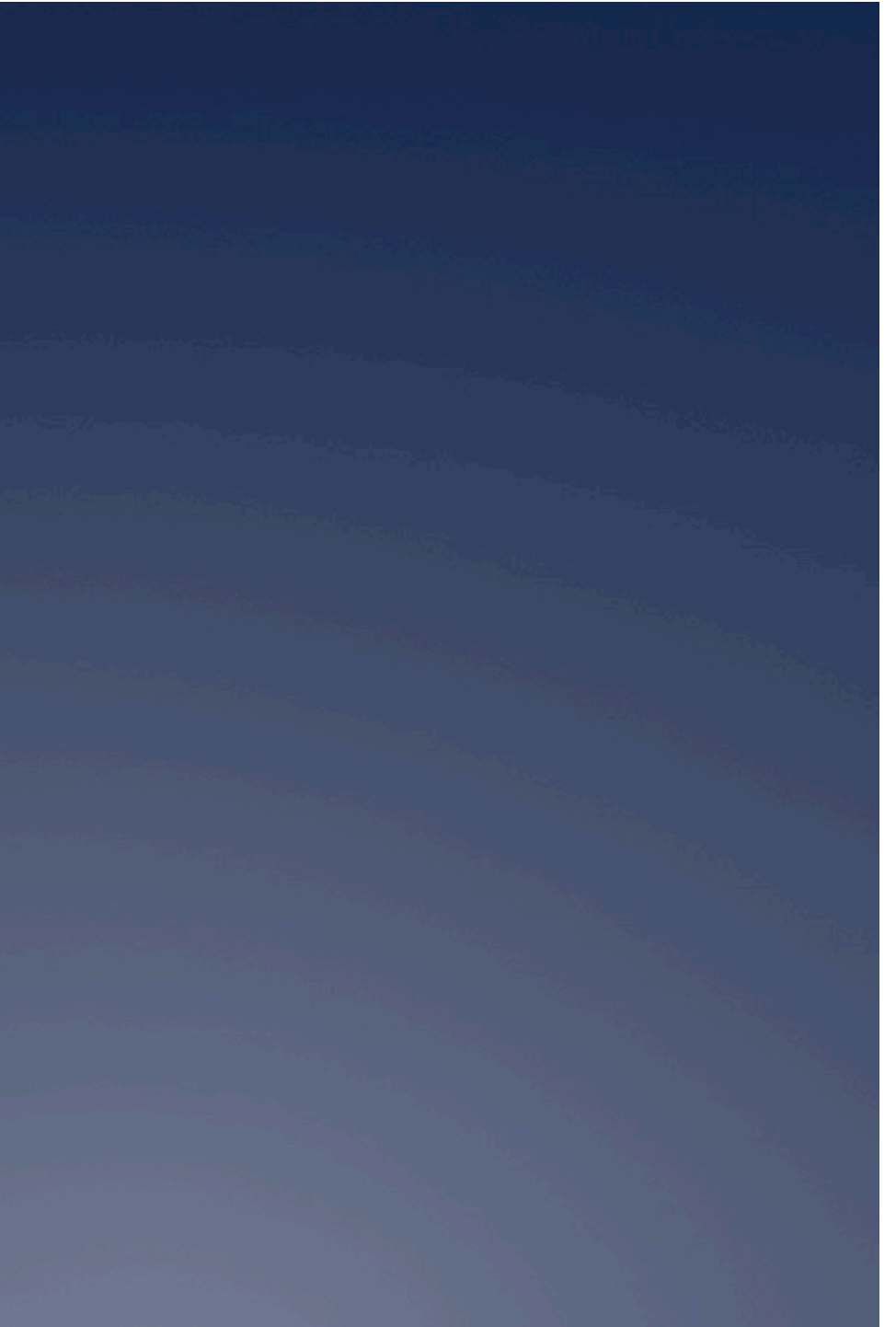


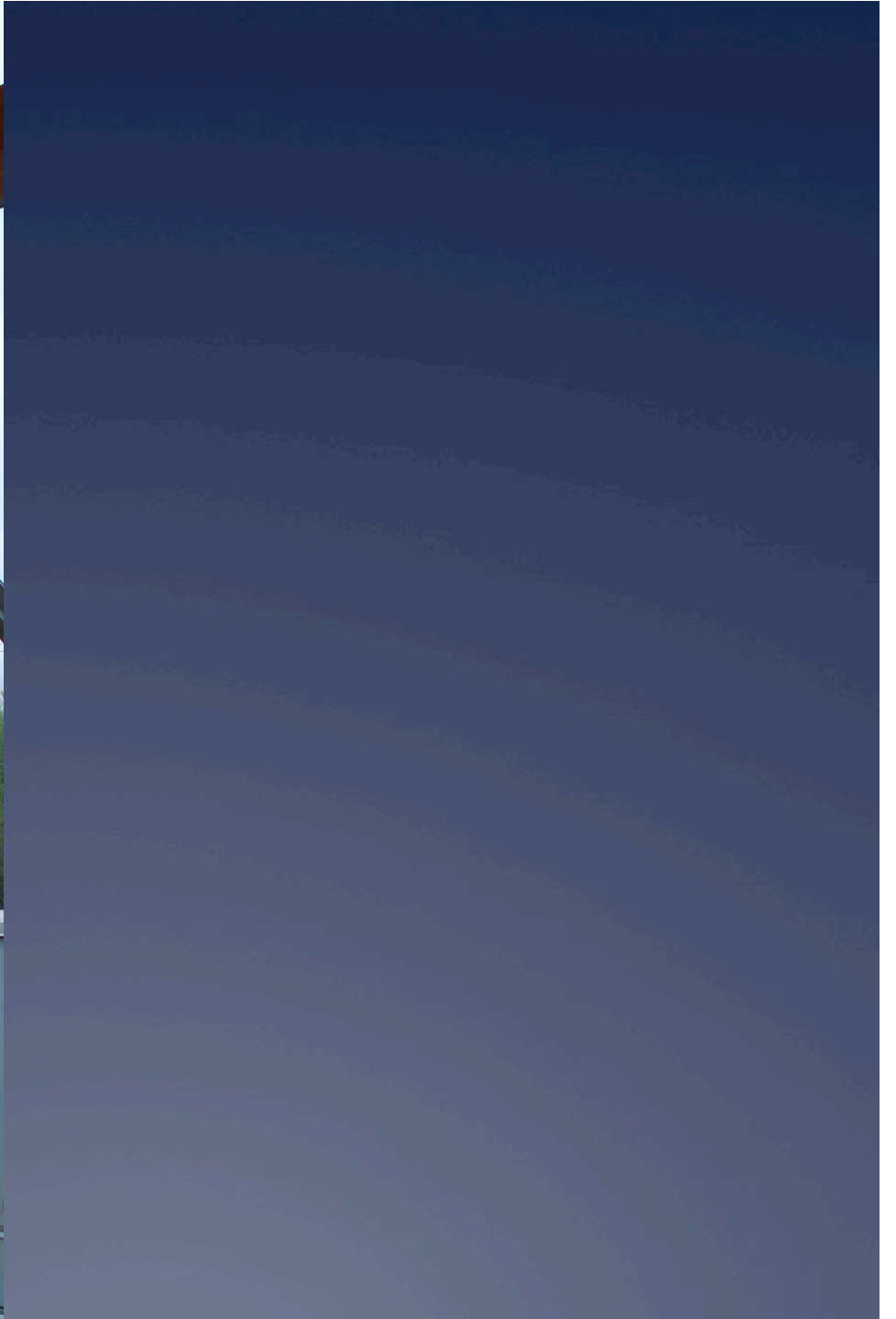


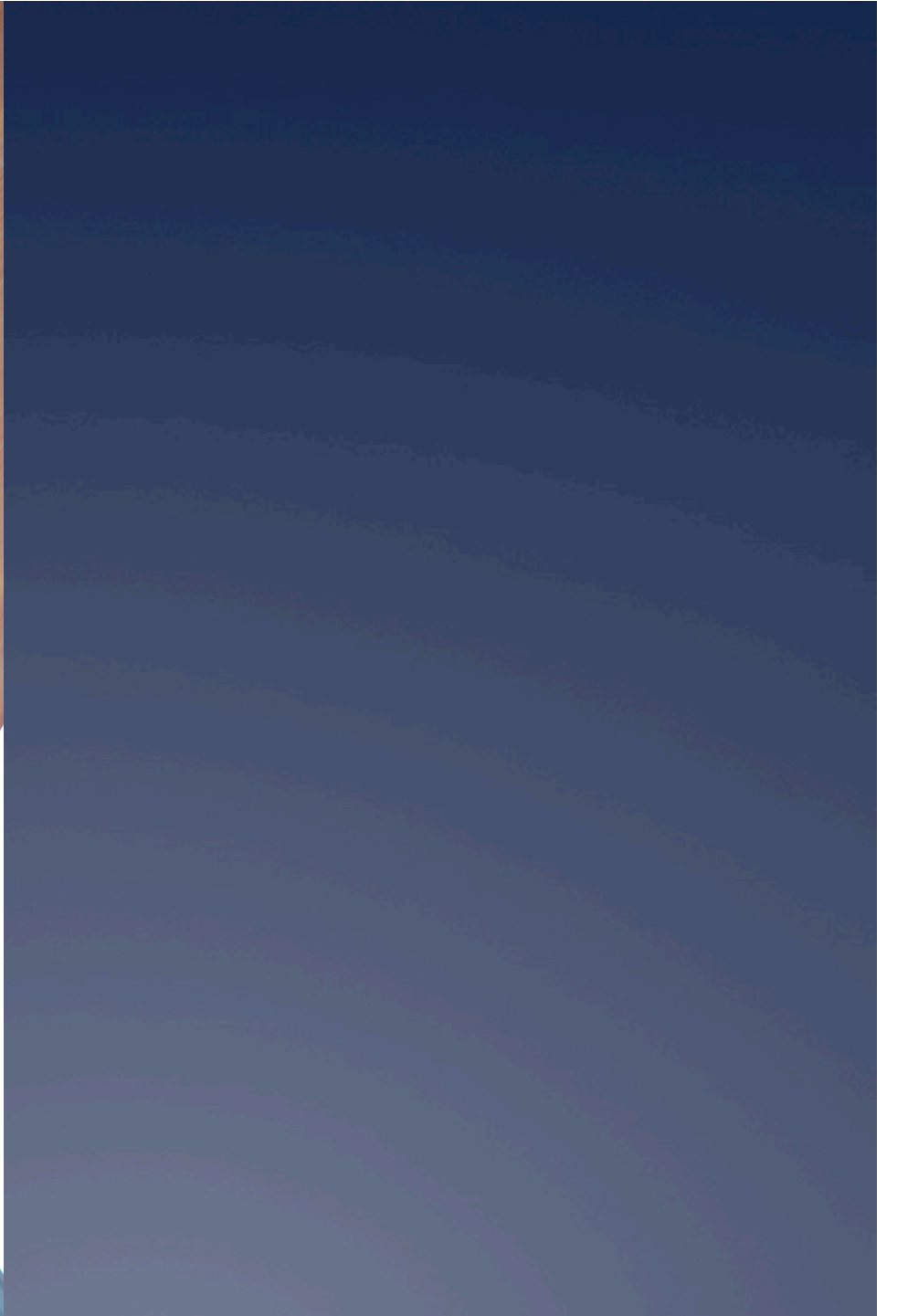








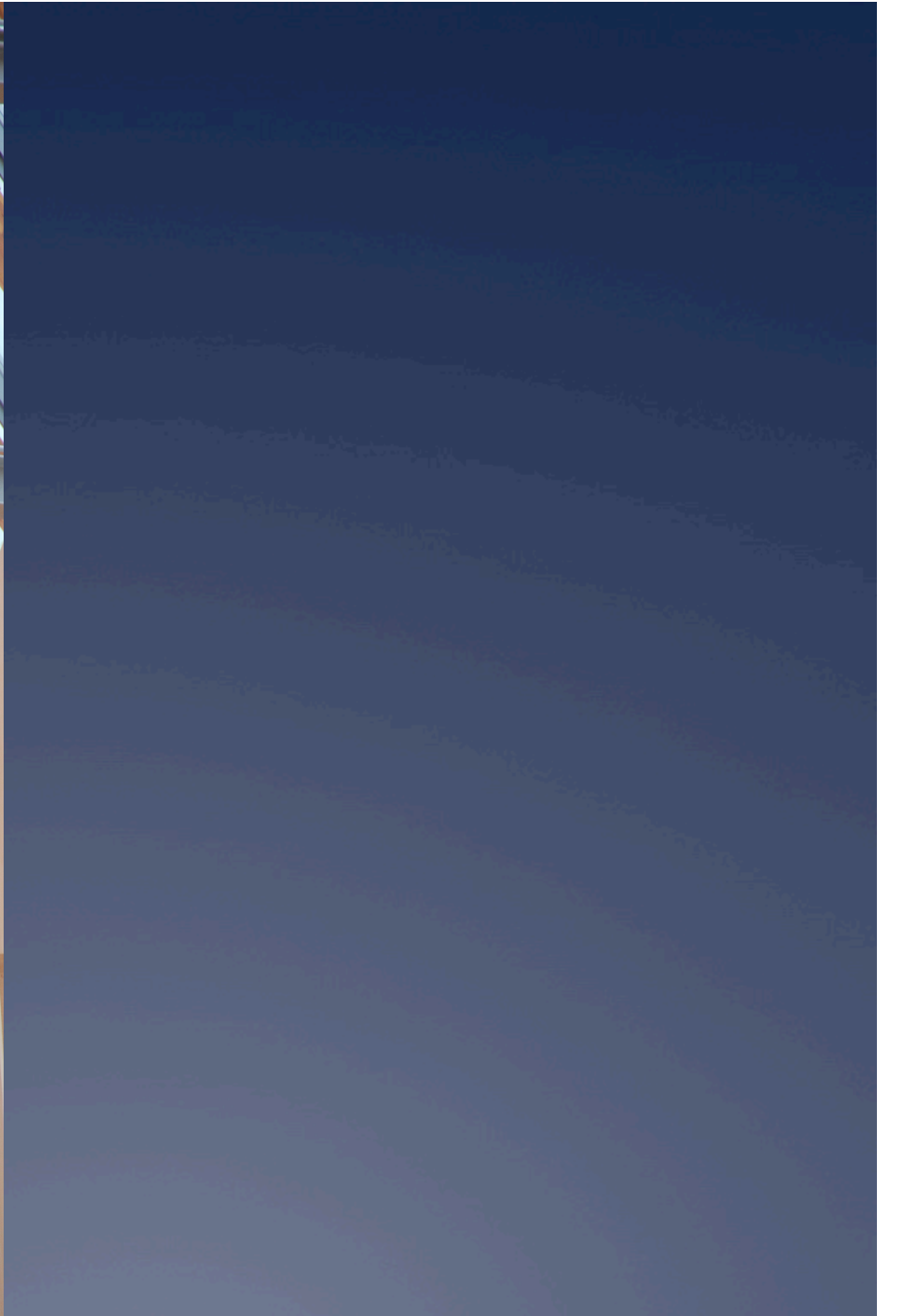


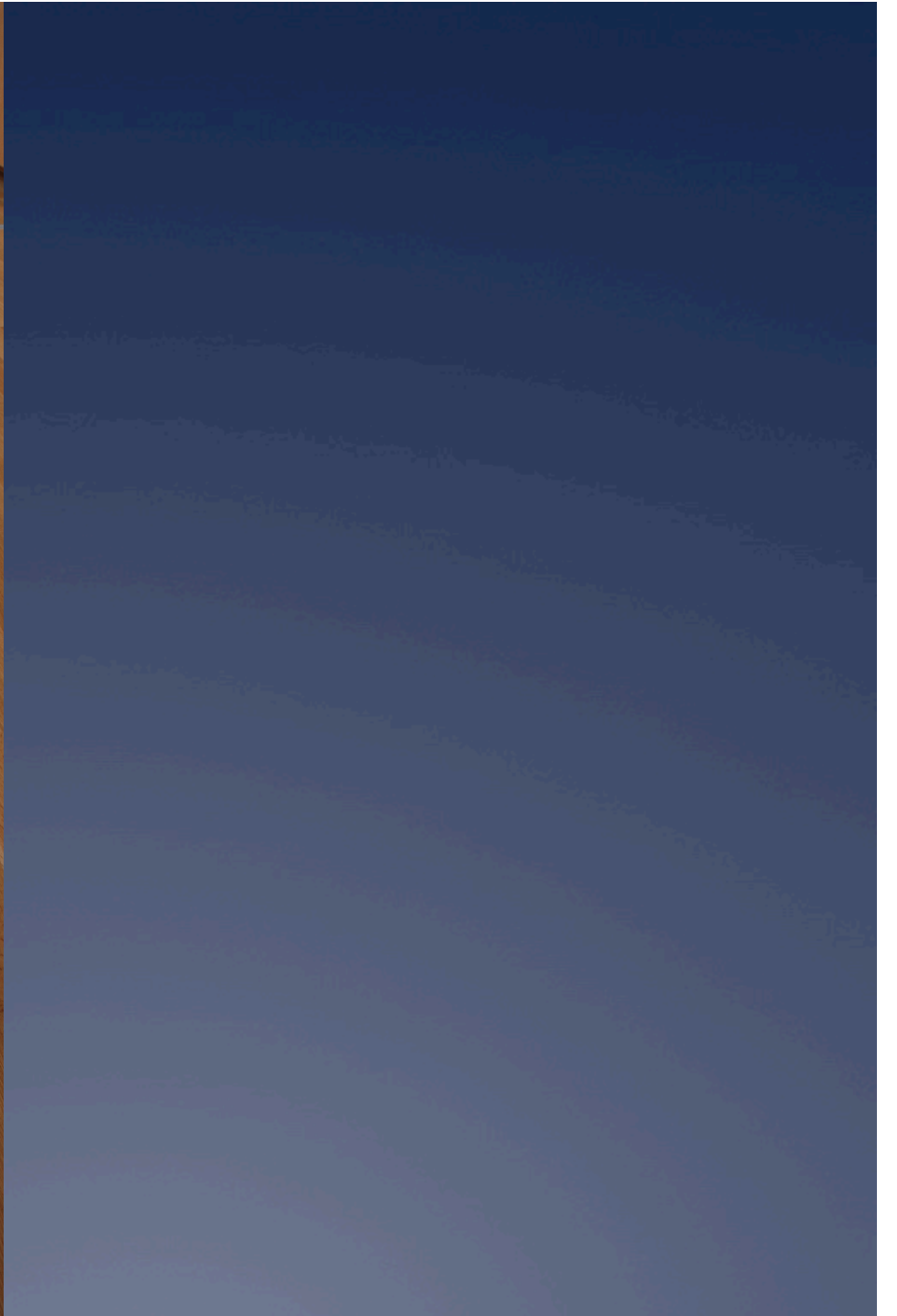


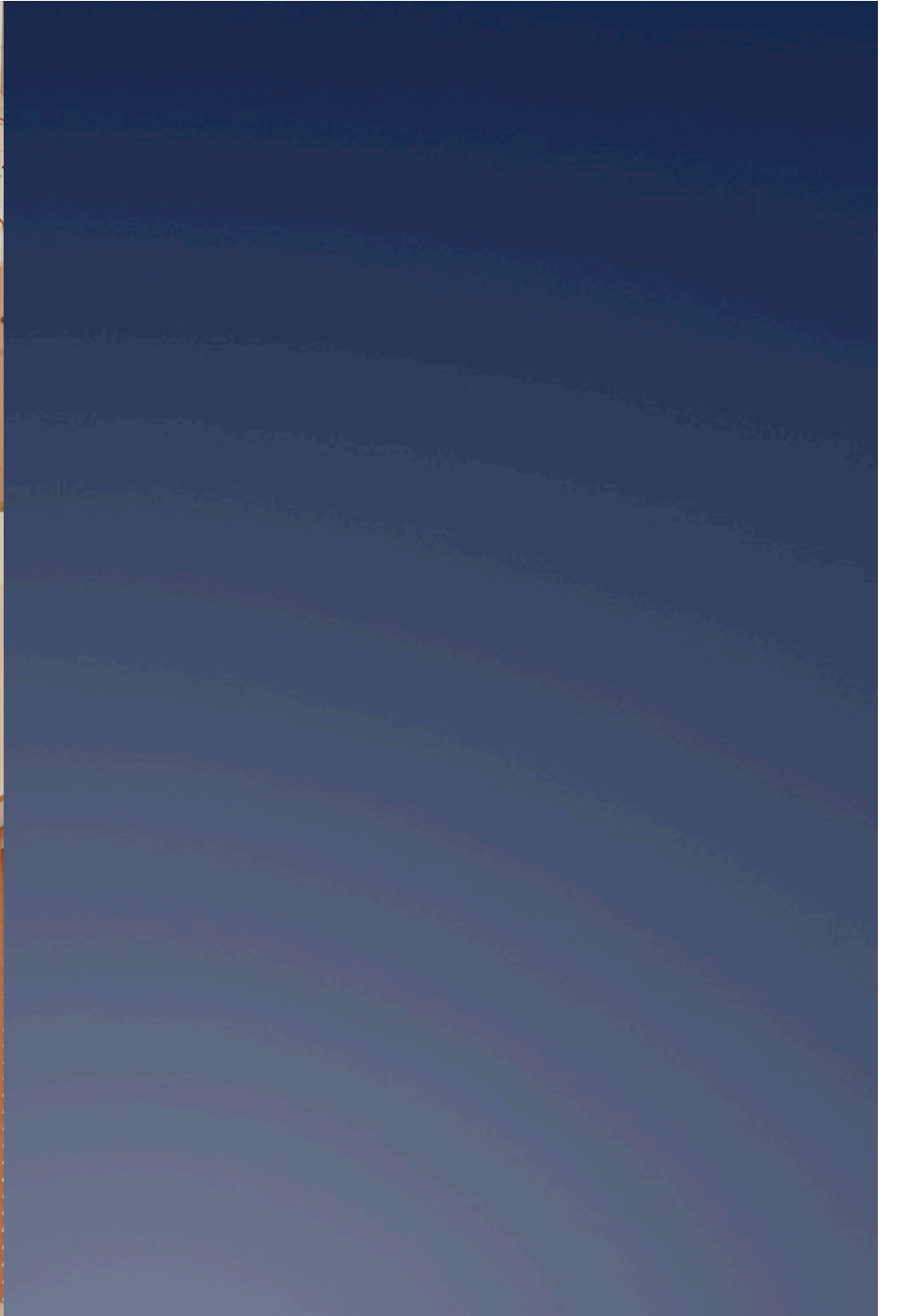


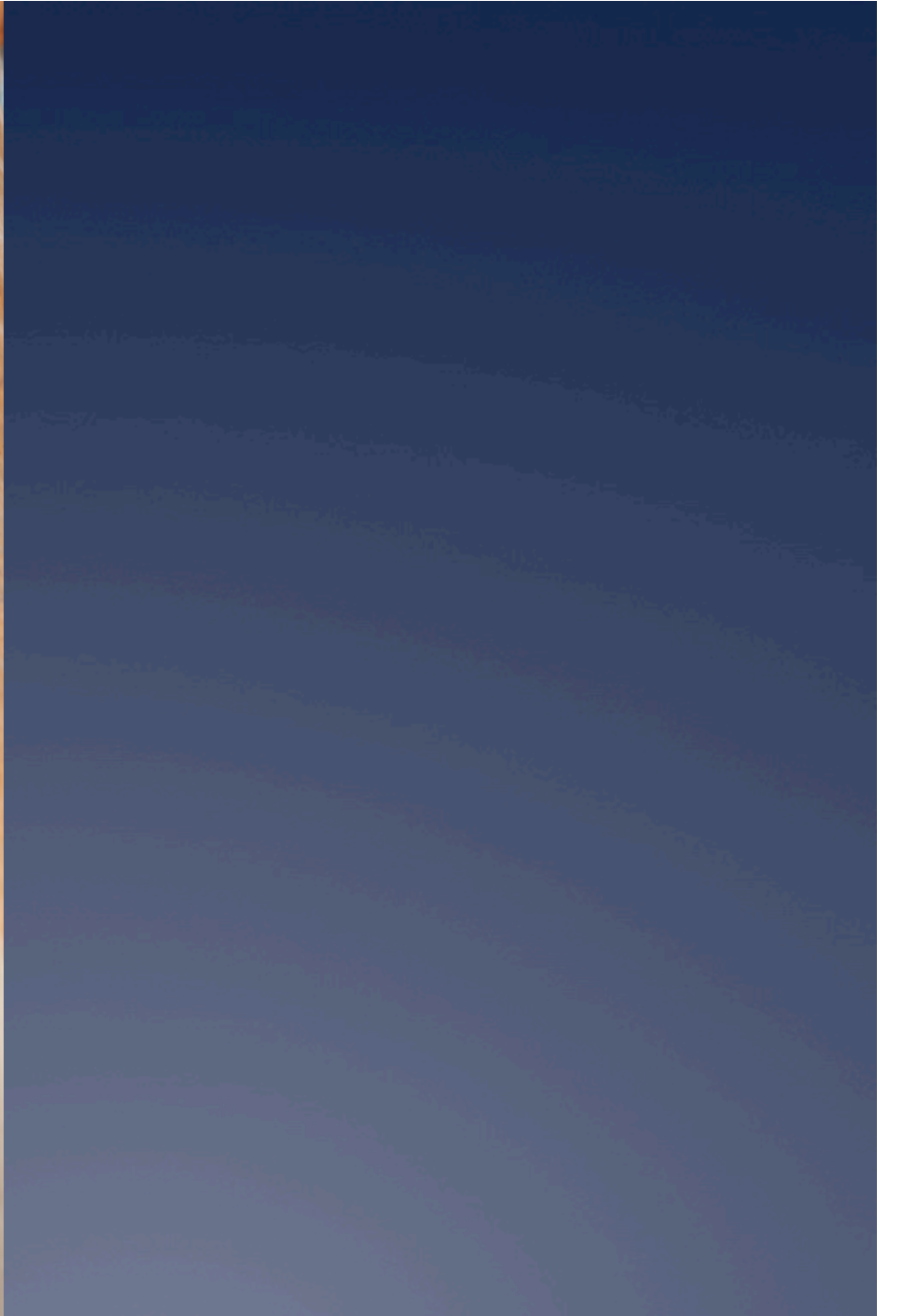








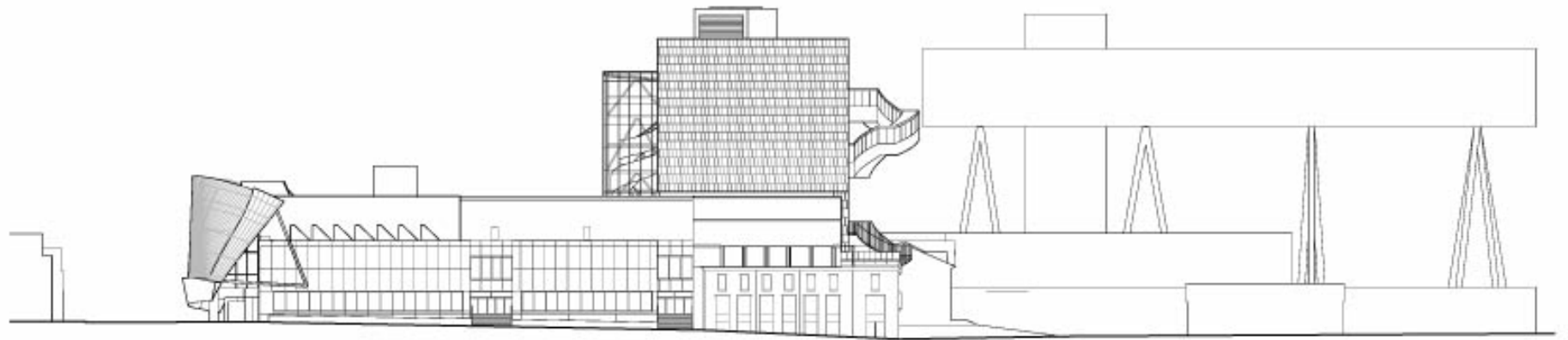




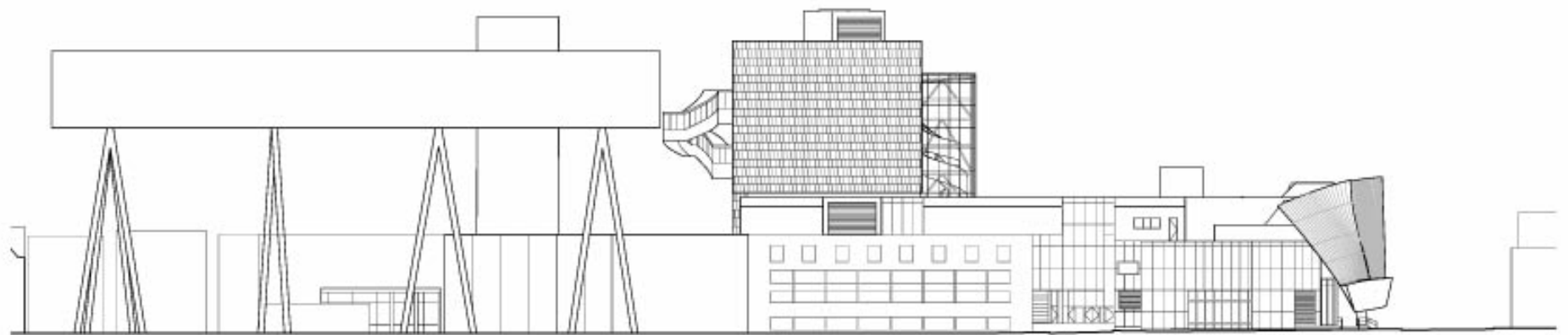


A large, vertical wooden sculpture with a rough, weathered texture. The wood is a warm brown color with prominent vertical grain lines and some darker, charred-looking areas. In the center of the sculpture, the name 'G PENONE' and the years '2000 · 2004' are engraved in a light, metallic-looking font. The sculpture is set against a background of light-colored wood paneling and a wooden floor.

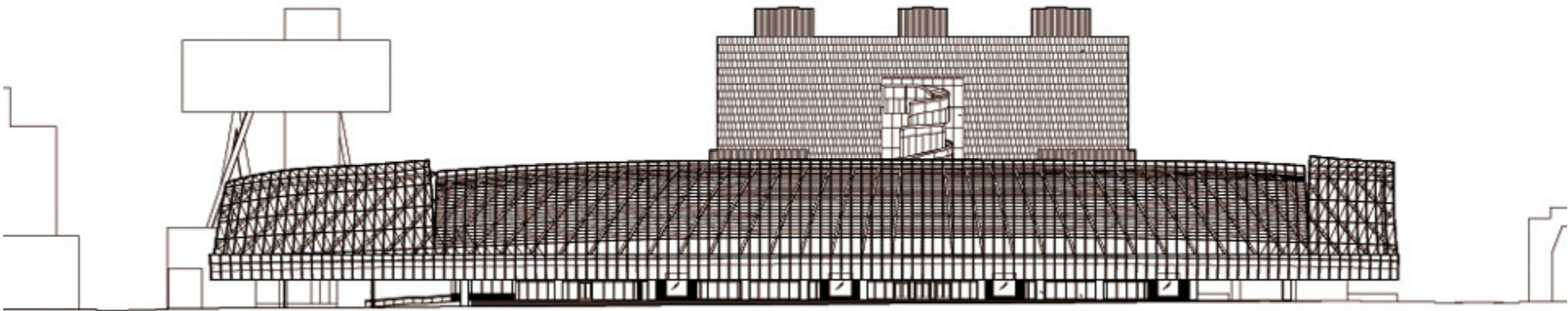
G PENONE
2000 · 2004



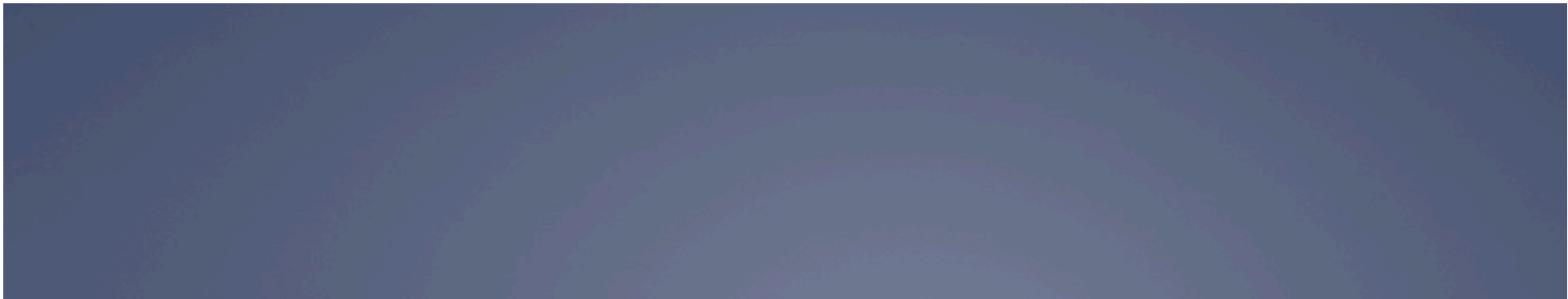
2 WEST ELEVATION TO REVERLEY

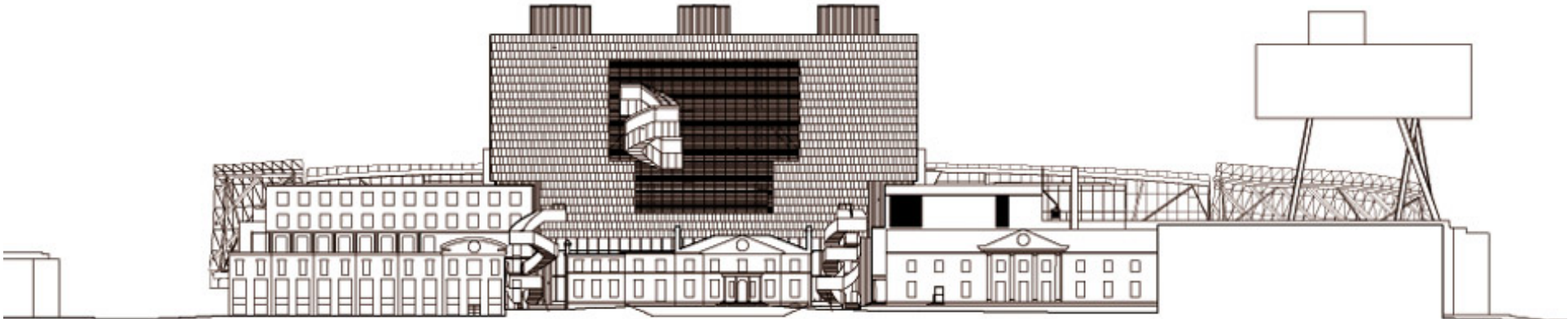


1 EAST ELEVATION TO SCALE
1/4"



2 NORTH ELEVATION TO DUNDAS STREET





① SOUTH ELEVATION TO GRANGE PARK
1/4"

















