

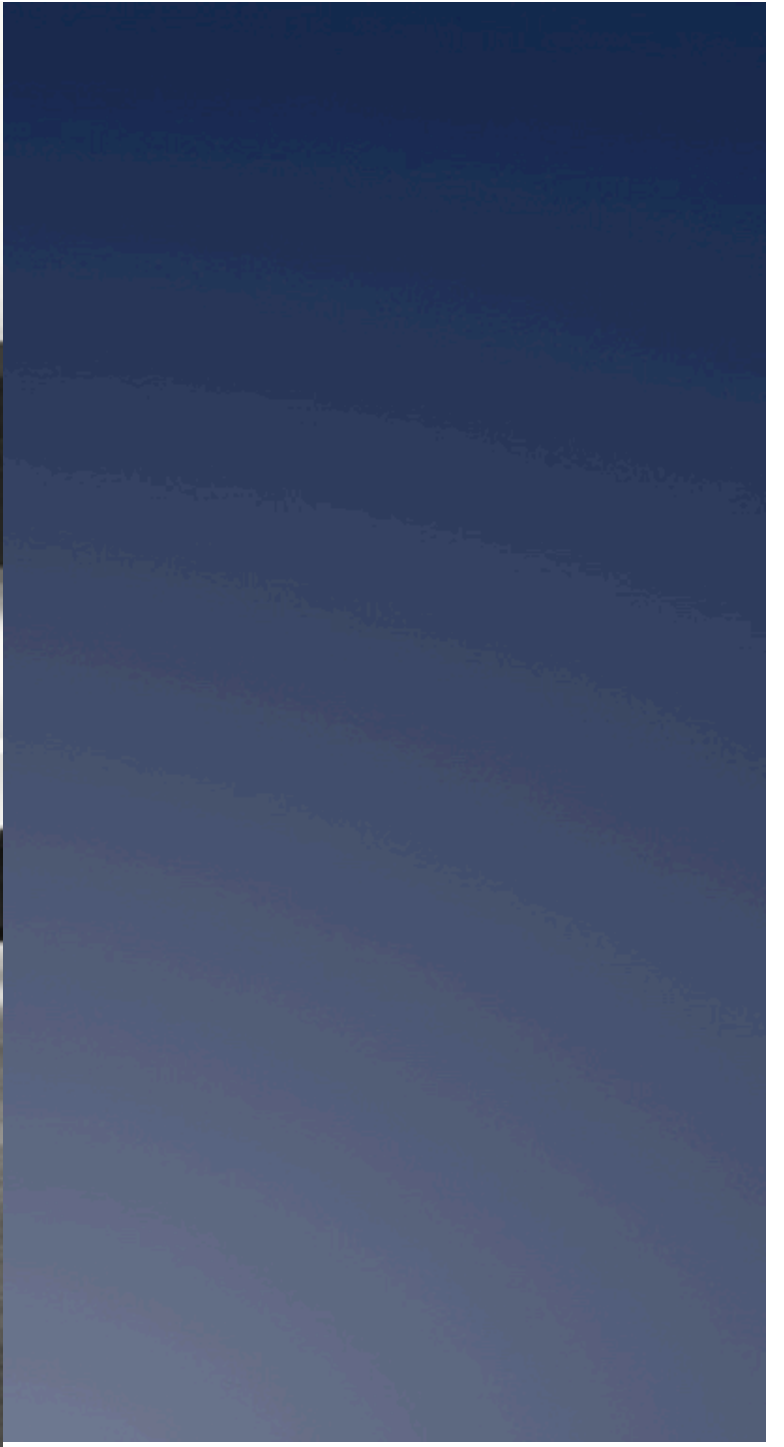
...B.Z. (before Zaha) there was

Eero Saarinen

TWA Flight Center

Eero Saarinen NYC

1962



June 7, 1960

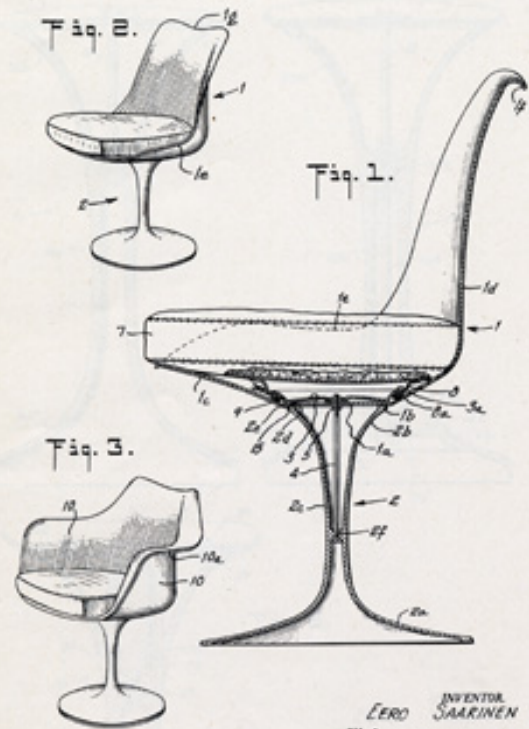
E. SAARINEN

2,939,517

ARTICLES OF FURNITURE AND SUPPORTS THEREFOR

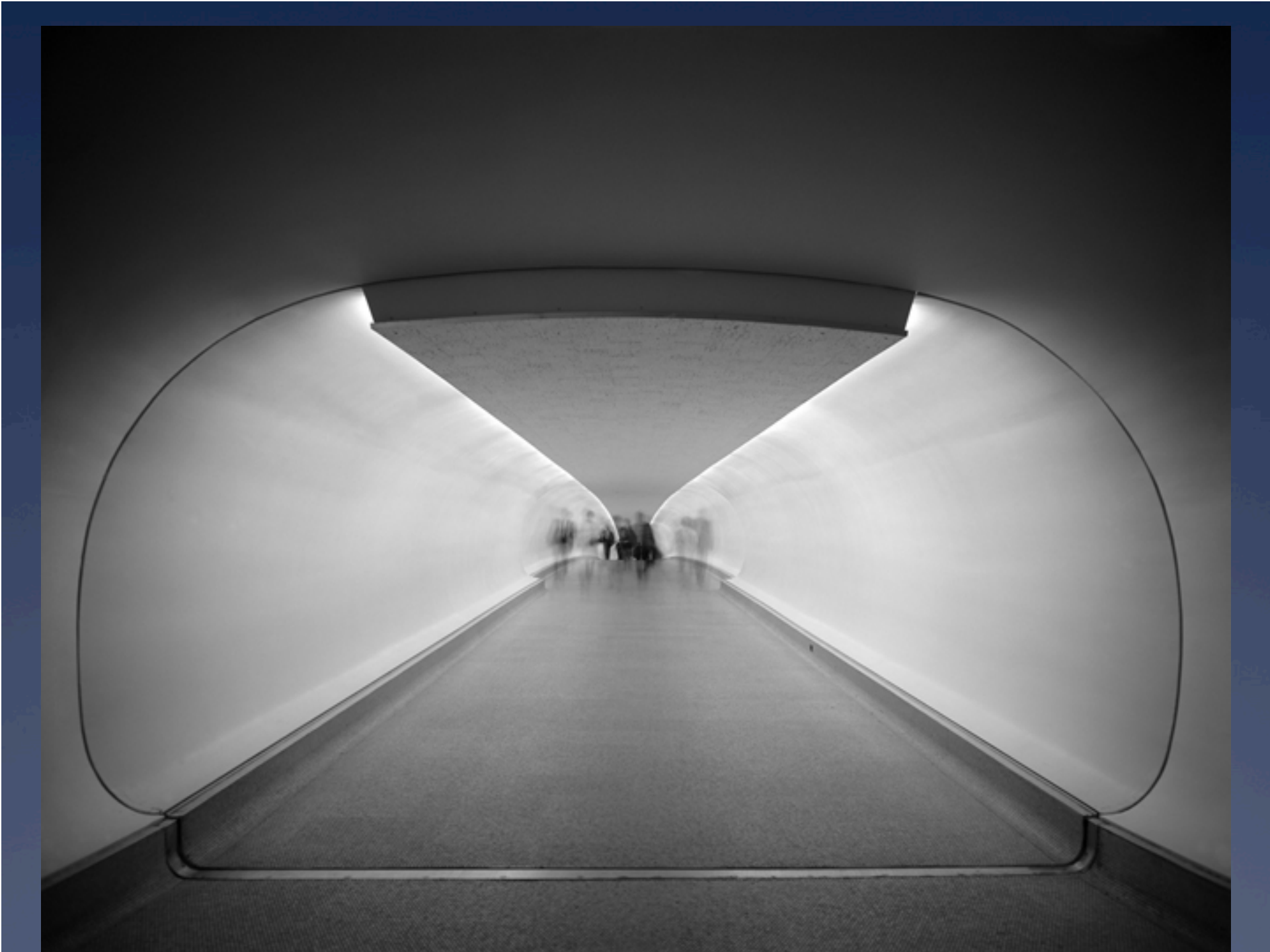
Filed March 27, 1957

2 Sheets-Sheet 1



INVENTOR
EERO SAARINEN
BY Lester H. Clark
ATTORNEY



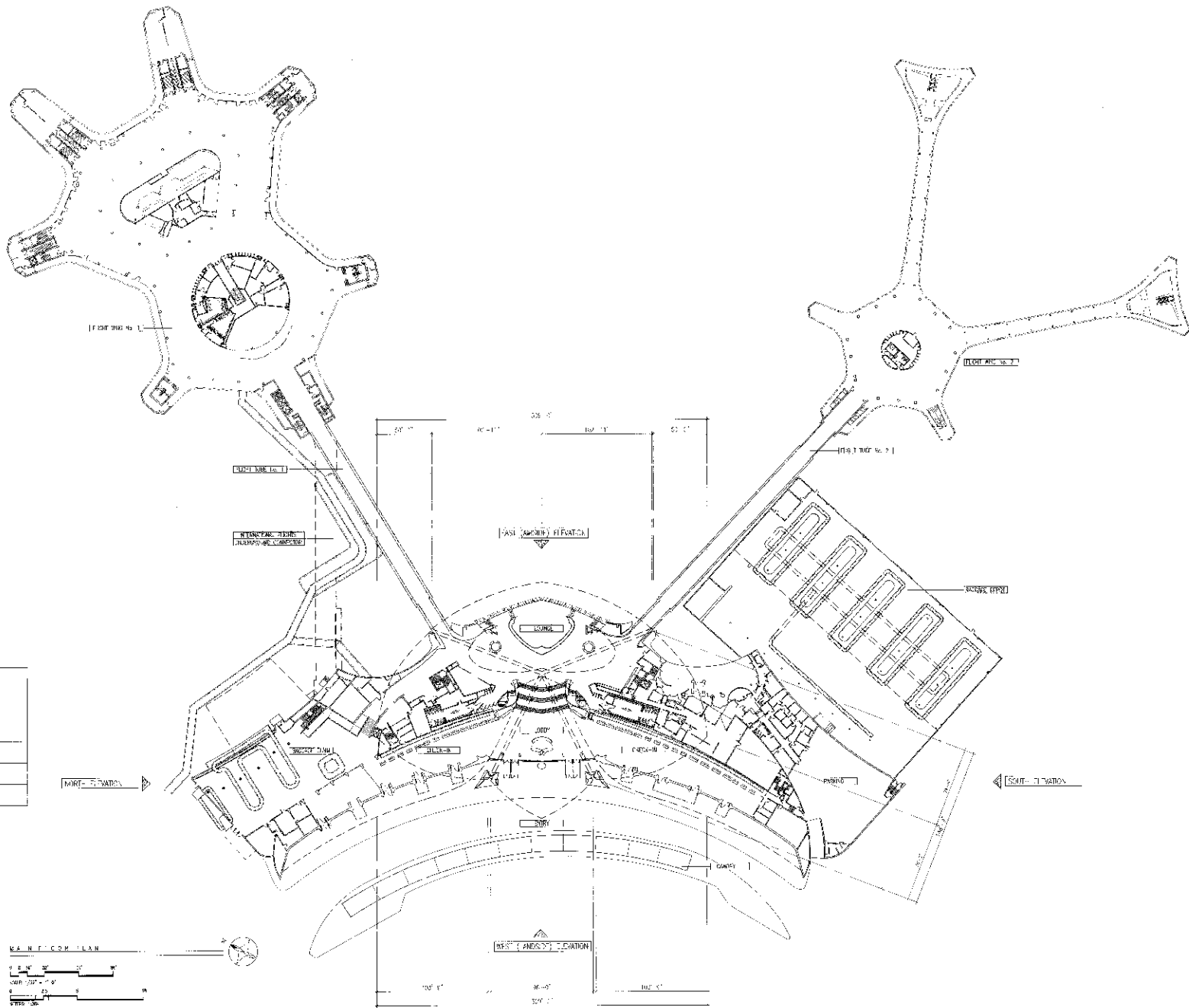






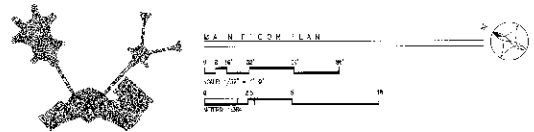


TWA FLIGHT CENTER



TWA TERMINAL

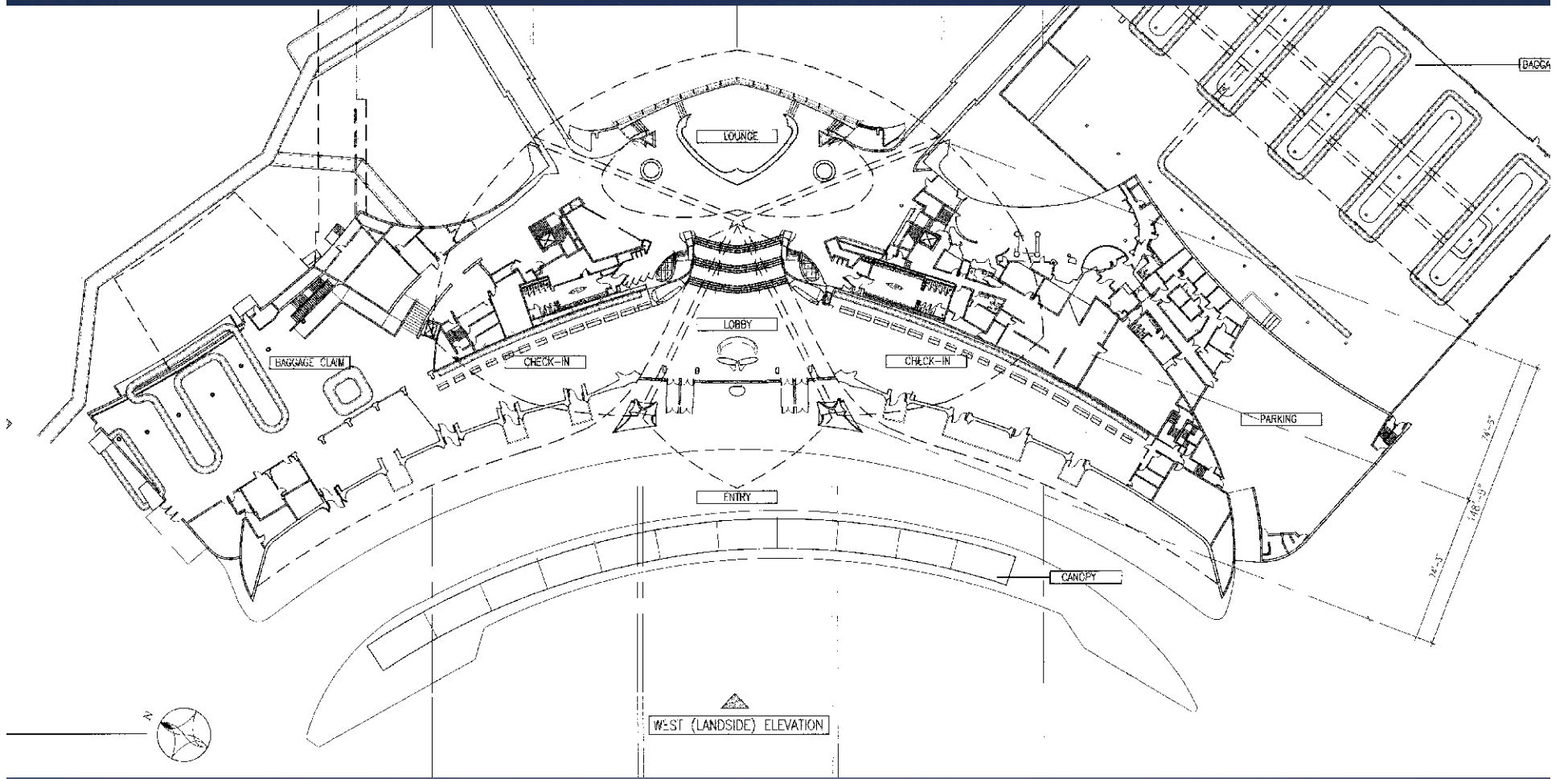
	EXTERIOR STRUCTURAL LINES
	WALL
	DOOR WITH SWING
	DOOR WITH SWING AND TYPE
	DOOR WITH SWING AND TYPE
	DOOR WITH SWING AND TYPE
	DOOR WITH SWING AND TYPE
	DOOR WITH SWING AND TYPE
	DOOR WITH SWING AND TYPE
	DOOR WITH SWING AND TYPE
	DOOR WITH SWING AND TYPE

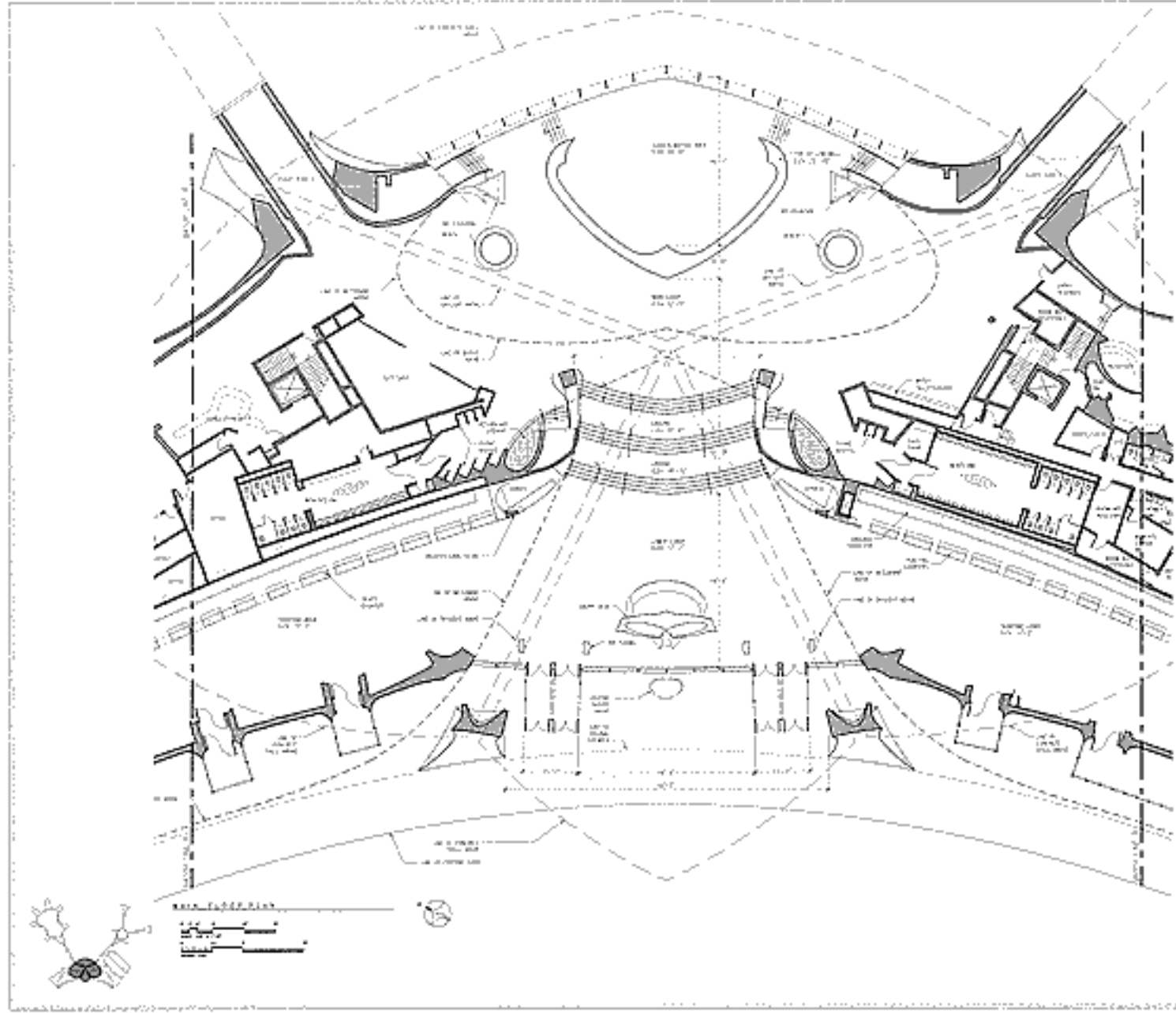


TRANS WORLD AIRLINES FLIGHT CENTER
 JAMAICA, N.Y.
 QUEENS COUNTY
 NEW YORK

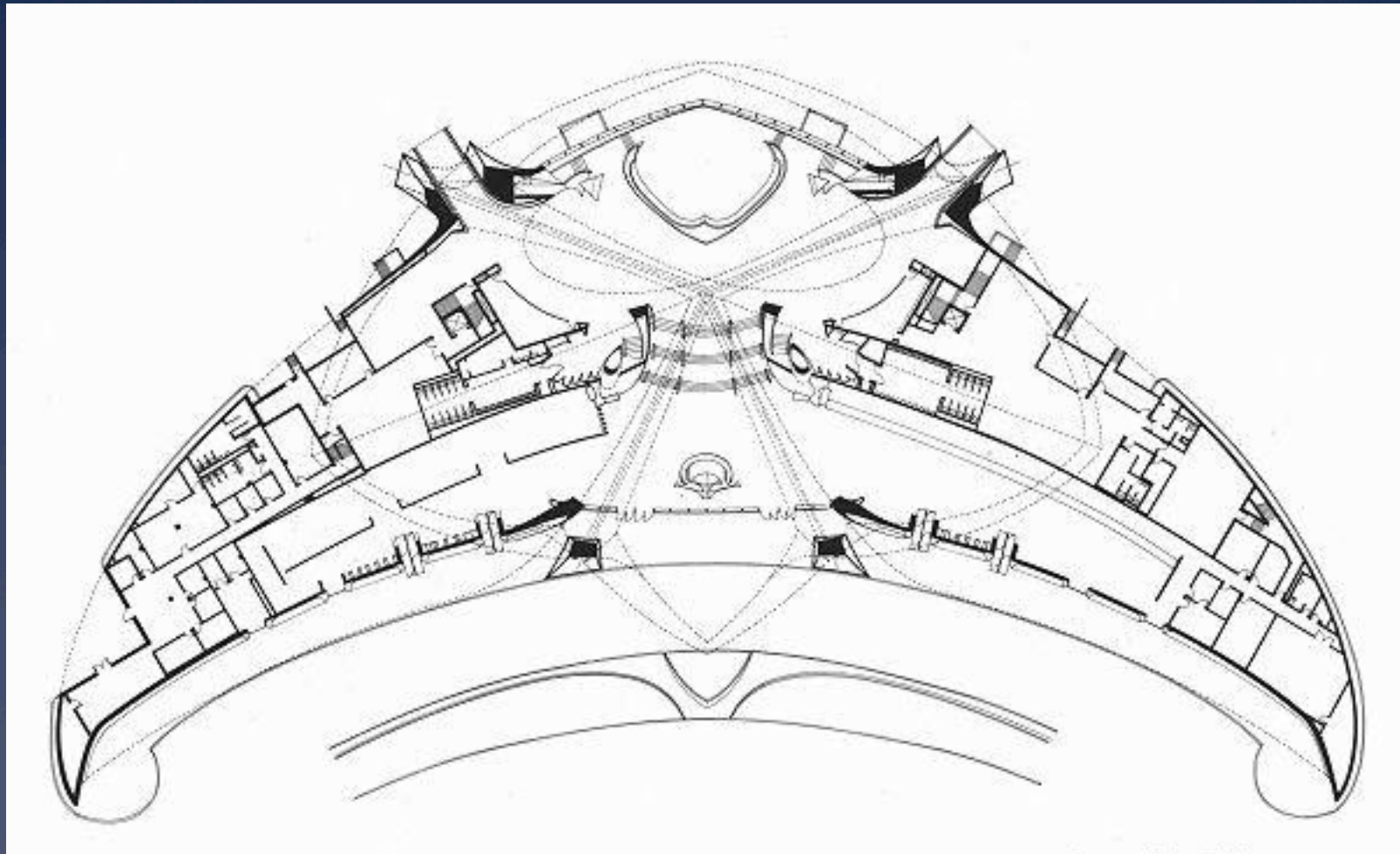
SHEET 5 OF 28
 DRAWING NUMBER
 TWA-571

DRAWN BY: BETTE BAFFORD WALKER ARCHITECTS
 NATIONAL PARK SERVICE
 UNITED STATES DEPARTMENT OF THE INTERIOR

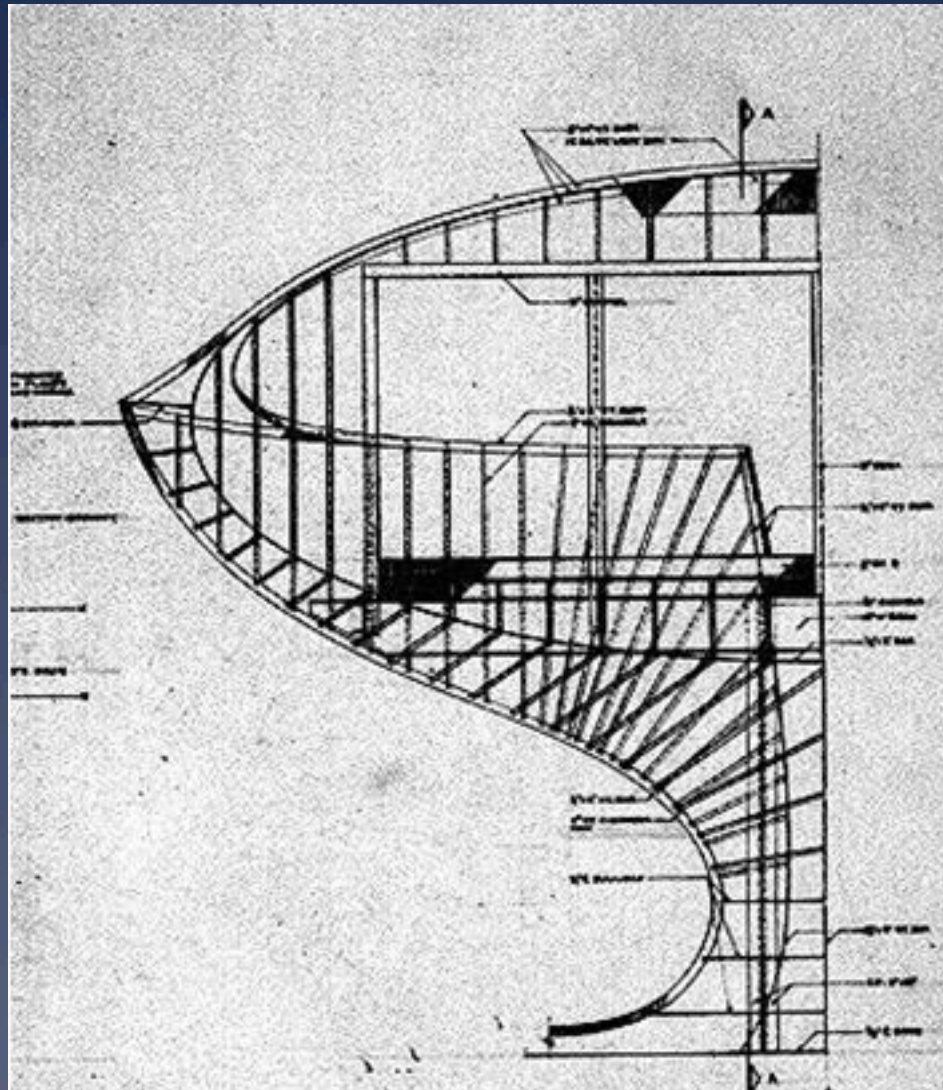




TRANS WORLD AIRLINES FLIGHT CENTRE
 ARCHITECT: PERKINS+WILL
 1988
 SCALE: 1/8" = 1'-0"



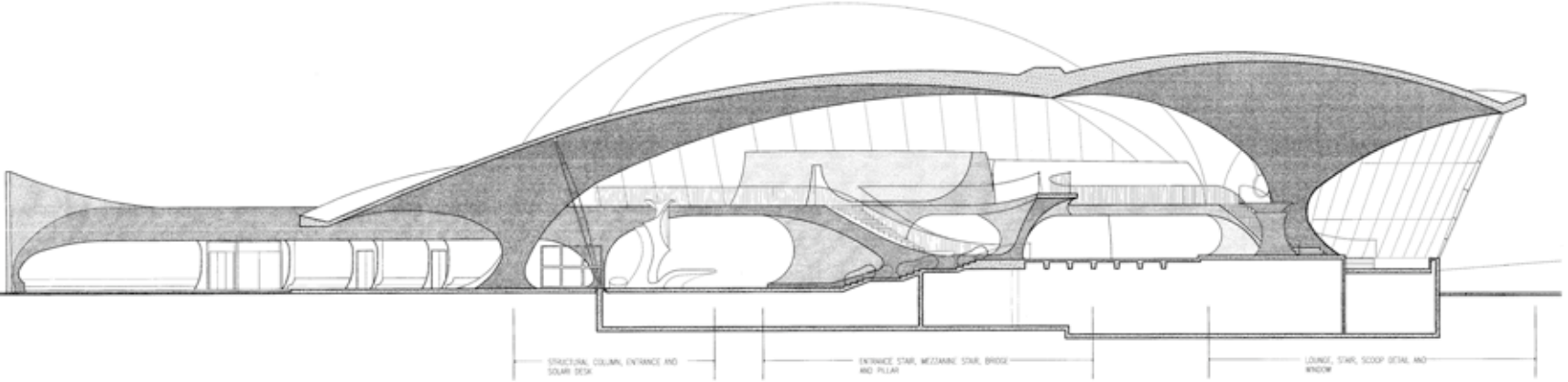






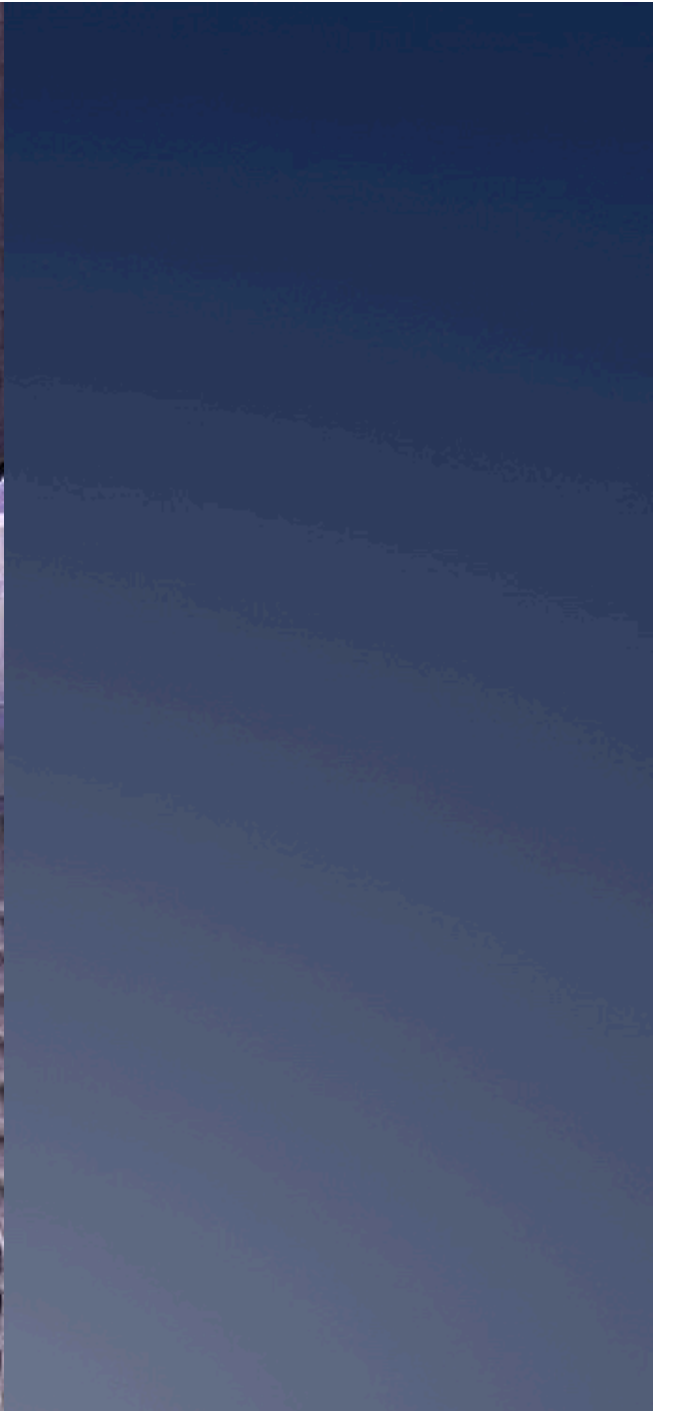


HIGH POINT OF BRIDGE E.L. 34'-0"
 MEZZANINE E.L. 27'-0"
 MAIN FLOOR E.L. 22'-0"
 SKATING AREA E.L. 20'-6"
 ENTRY E.L. 17'-0"
 GROUND FLOOR E.L. 10'-0"

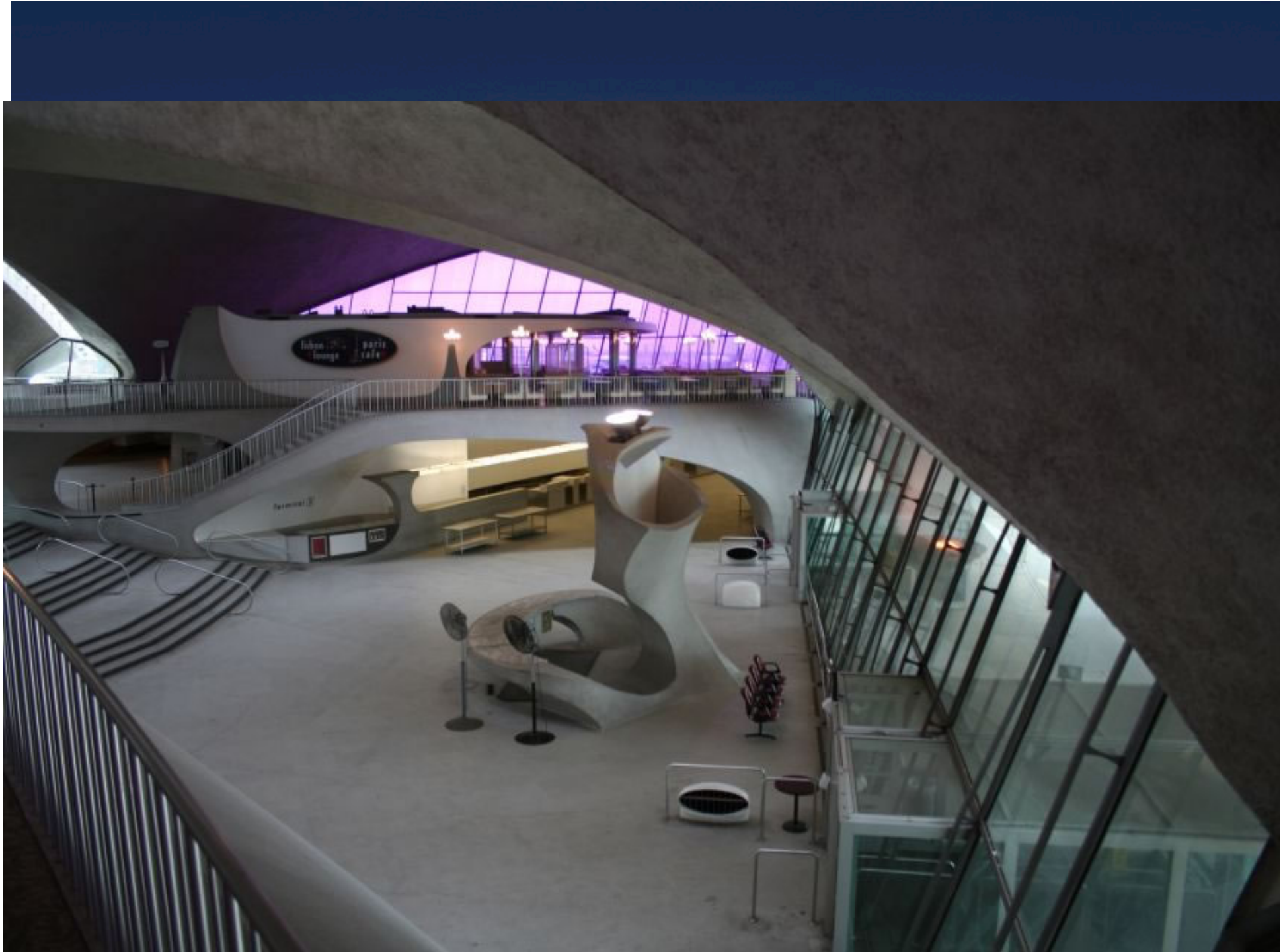


STRUCTURAL COLUMN, ENTRANCE AND SOLAR DECK
 ENTRANCE, STAIR, MEZZANINE, SOLAR, BRIDGE AND PILLAR
 LOUNGE, STAIR, SCOOP SEAT AND WINDOW

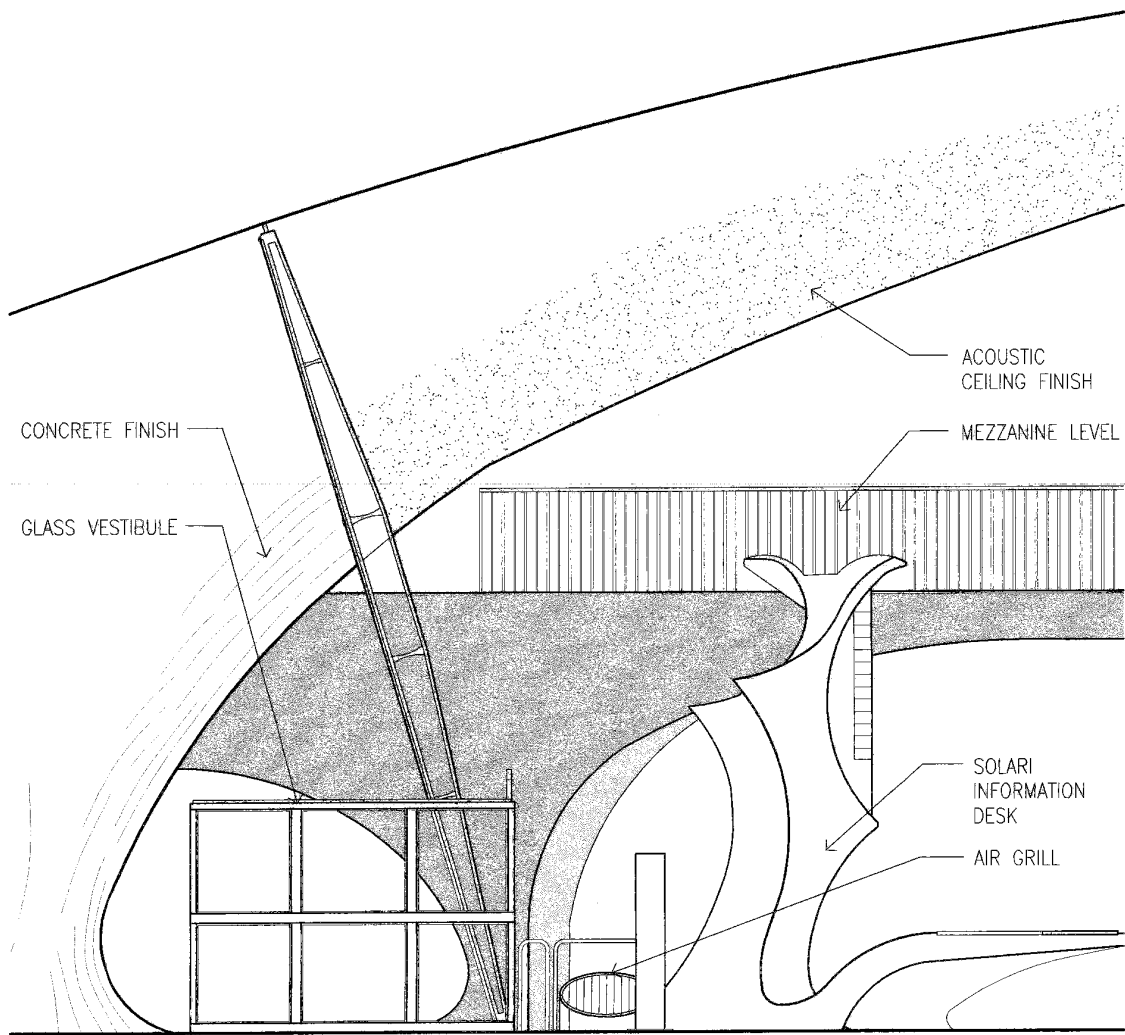
SECTION A-A
 1" = 4'-0"
 1" = 1'-0"
 1" = 1'-0"
 1" = 1'-0"



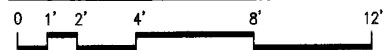




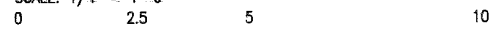




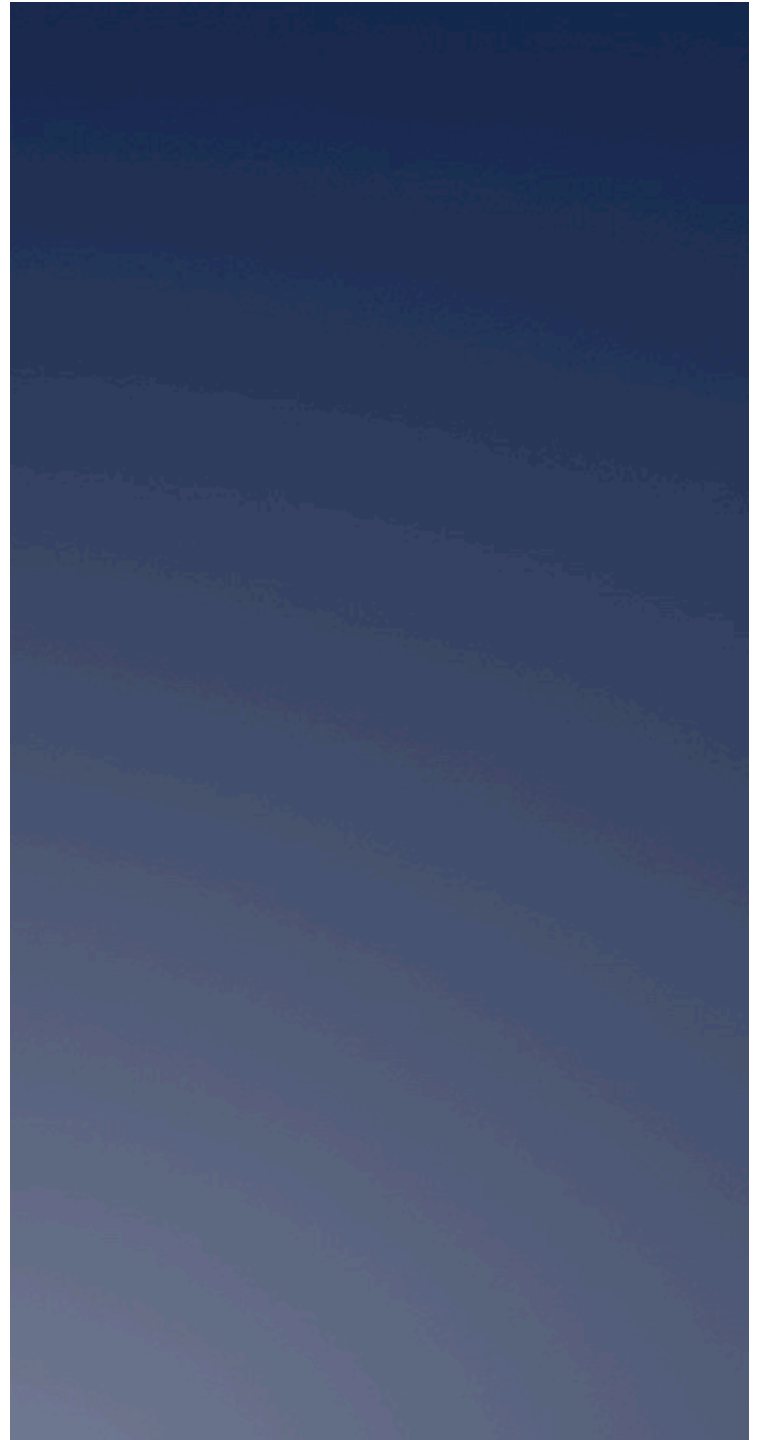
STRUCTURAL COLUMN, ENTRANCE AND SOLARI DESK

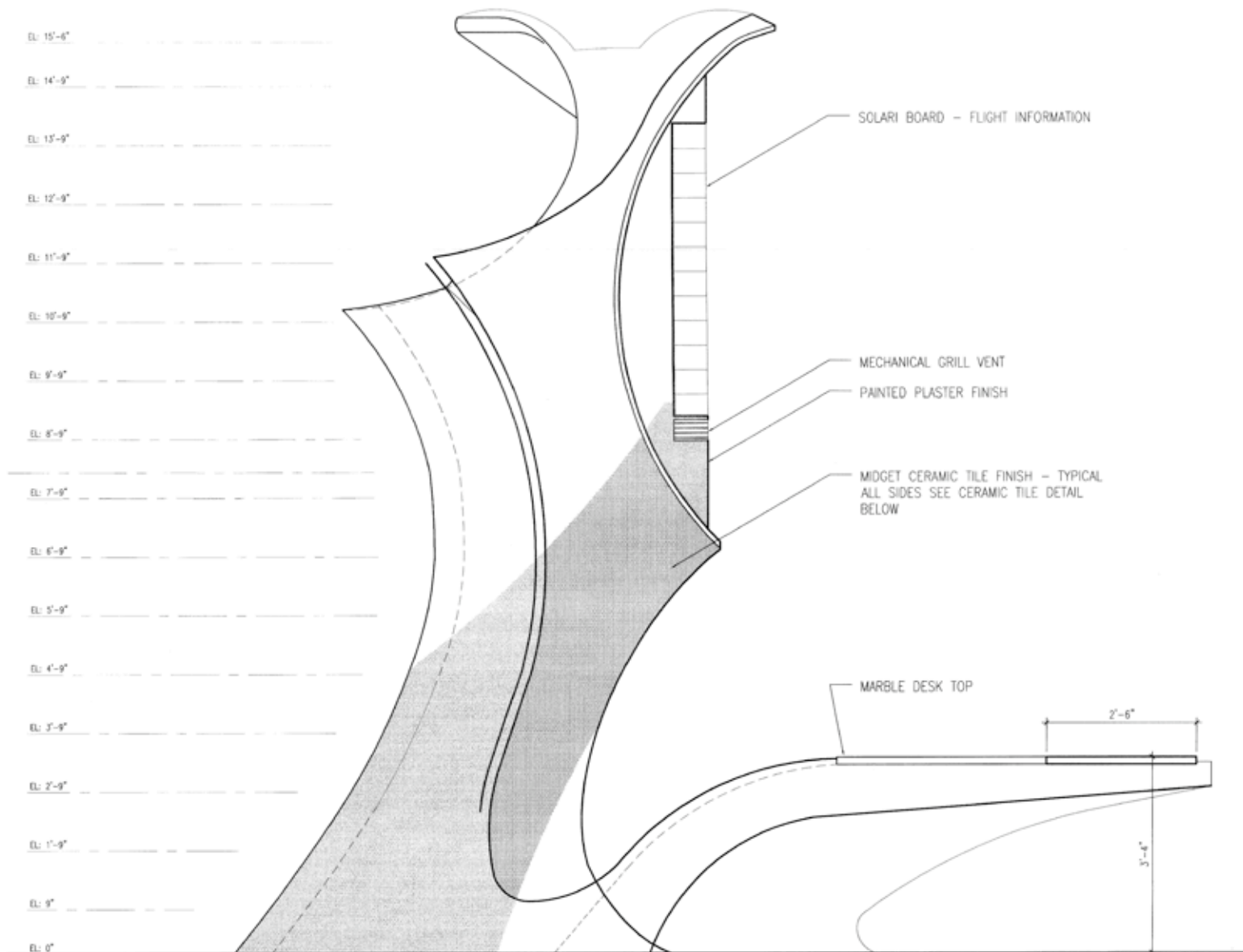


SCALE: 1/4" = 1'-0"

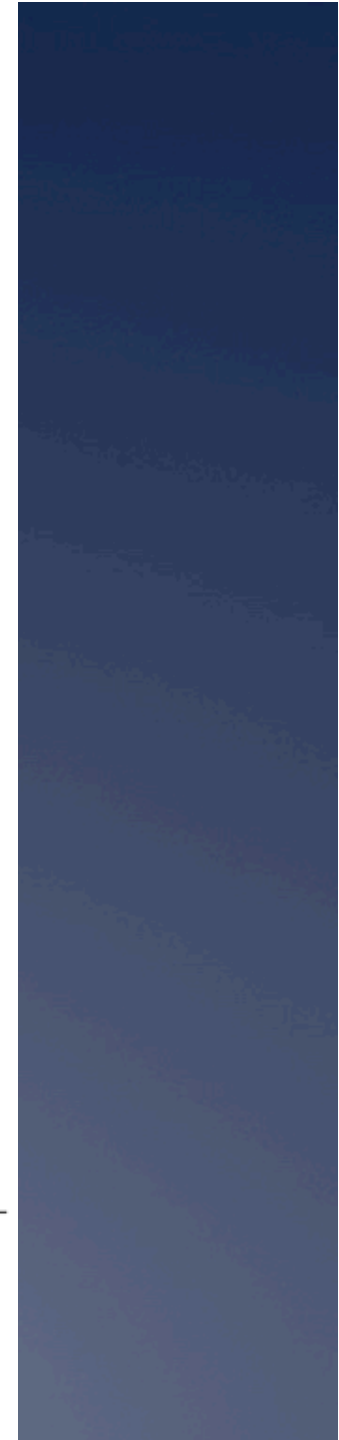
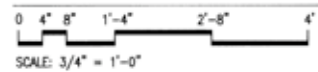


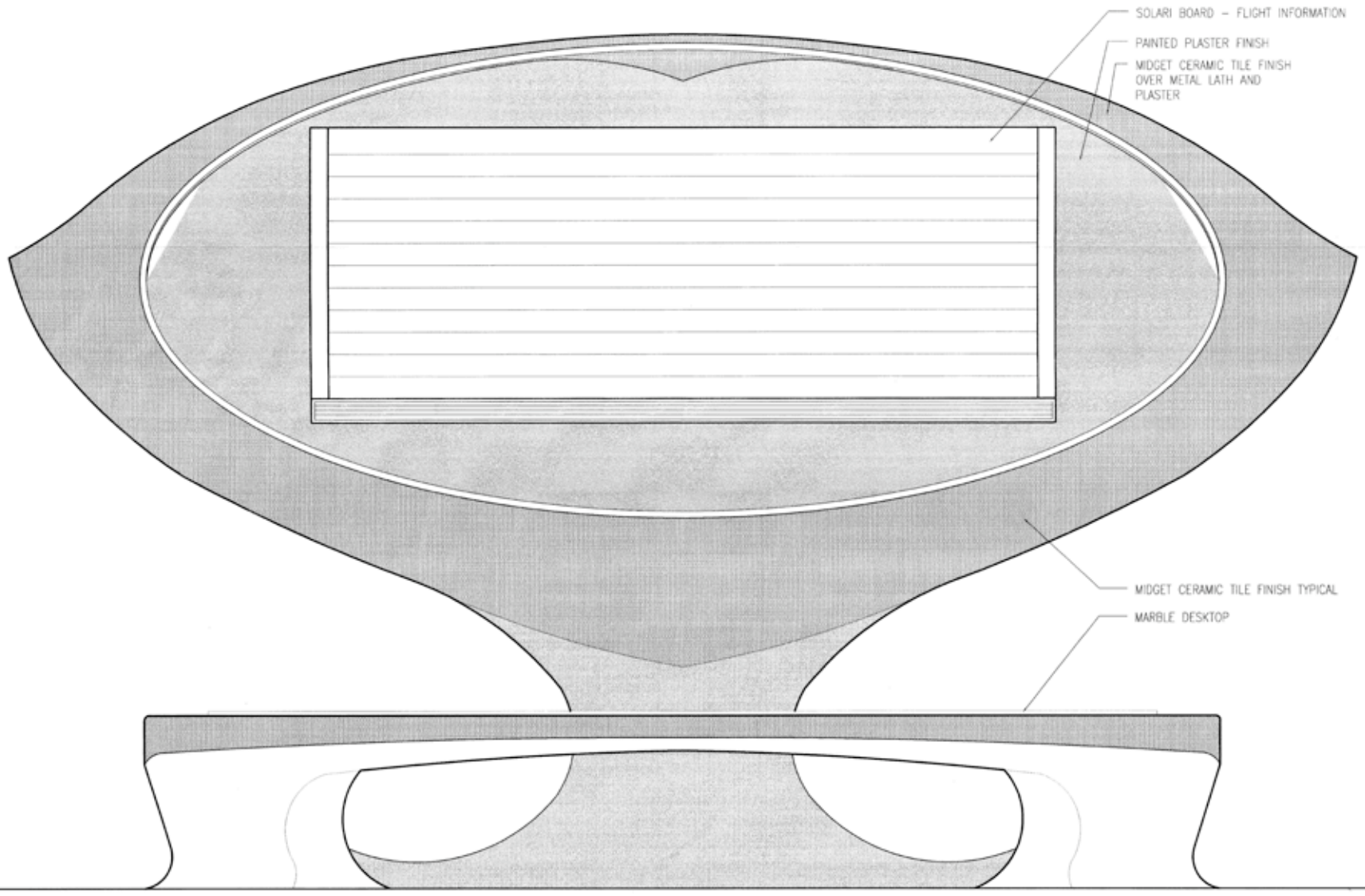
METERS: 1:48



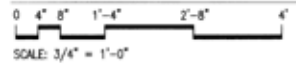


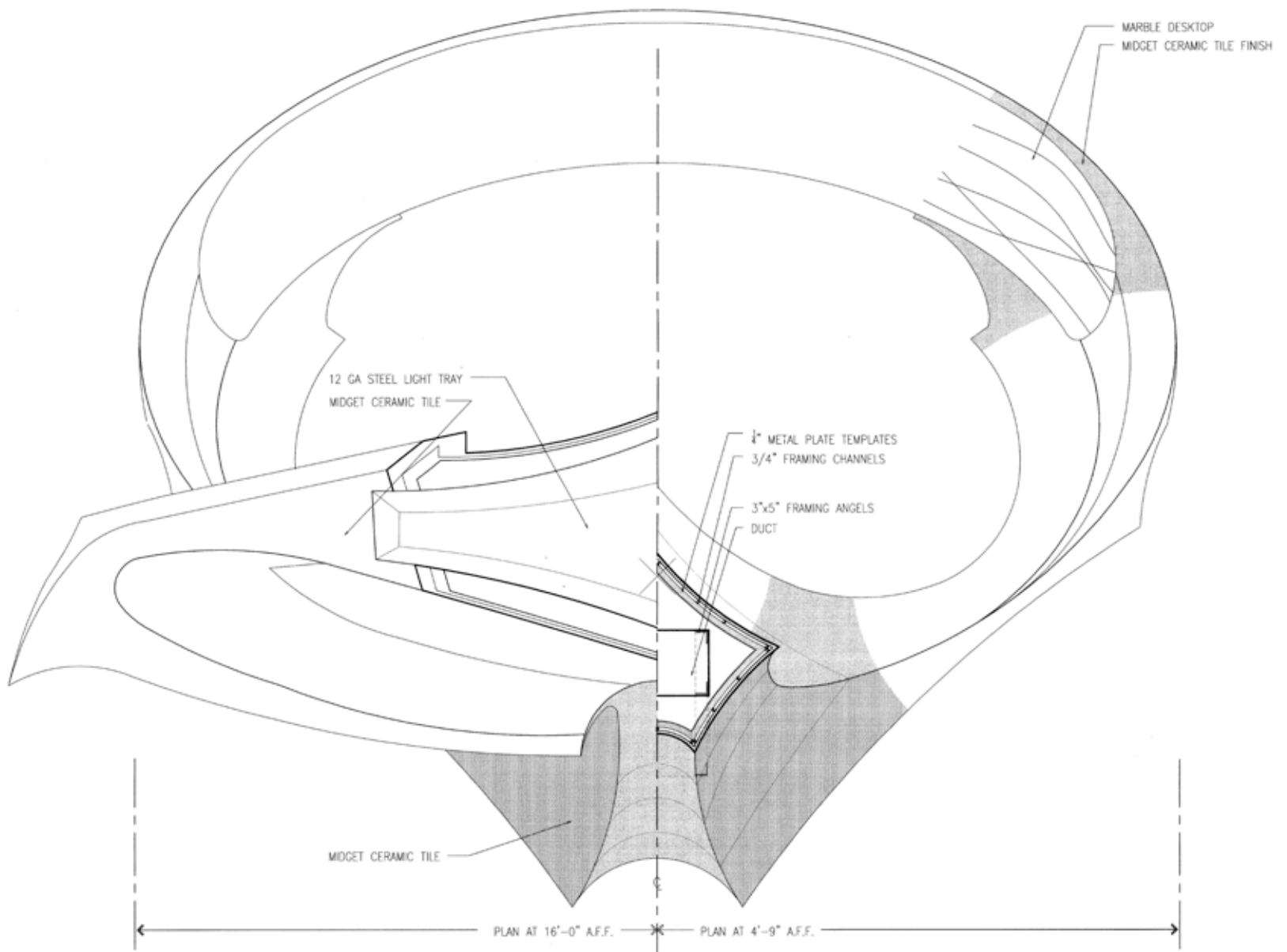
FINISH ELEVATION (PROFILE)





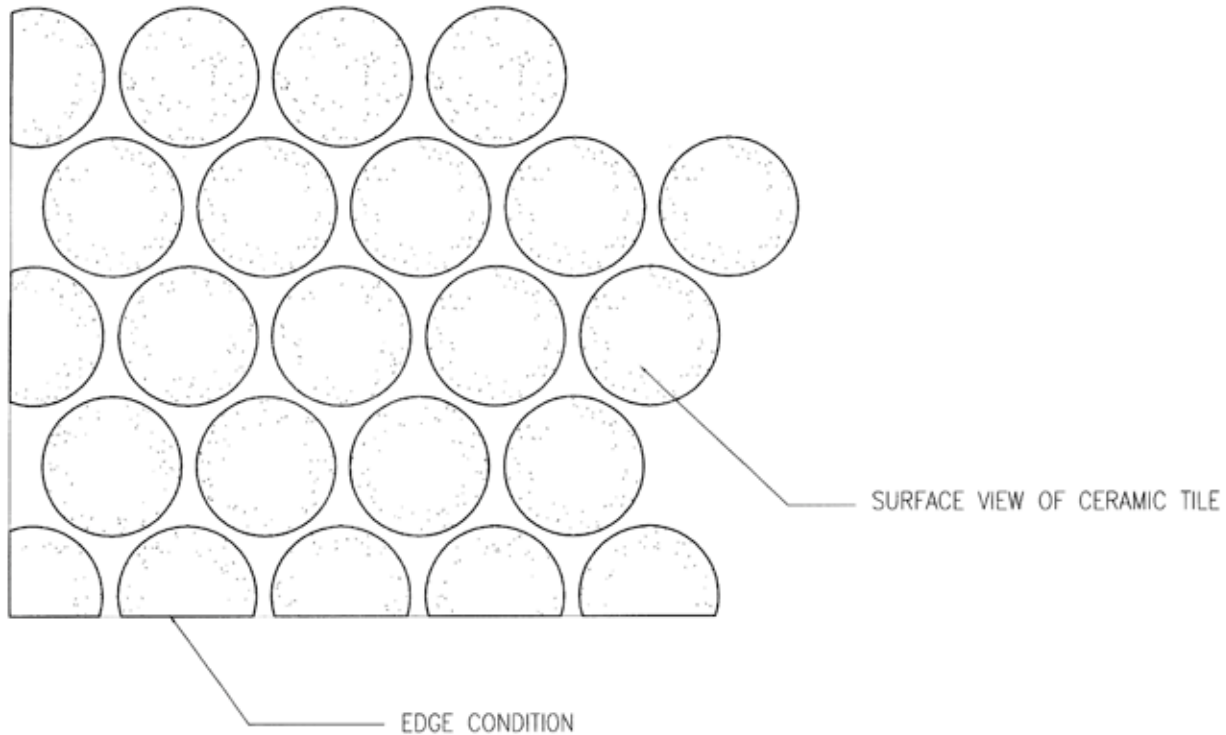
PARTIAL SECTION AND FINISH ELEVATION



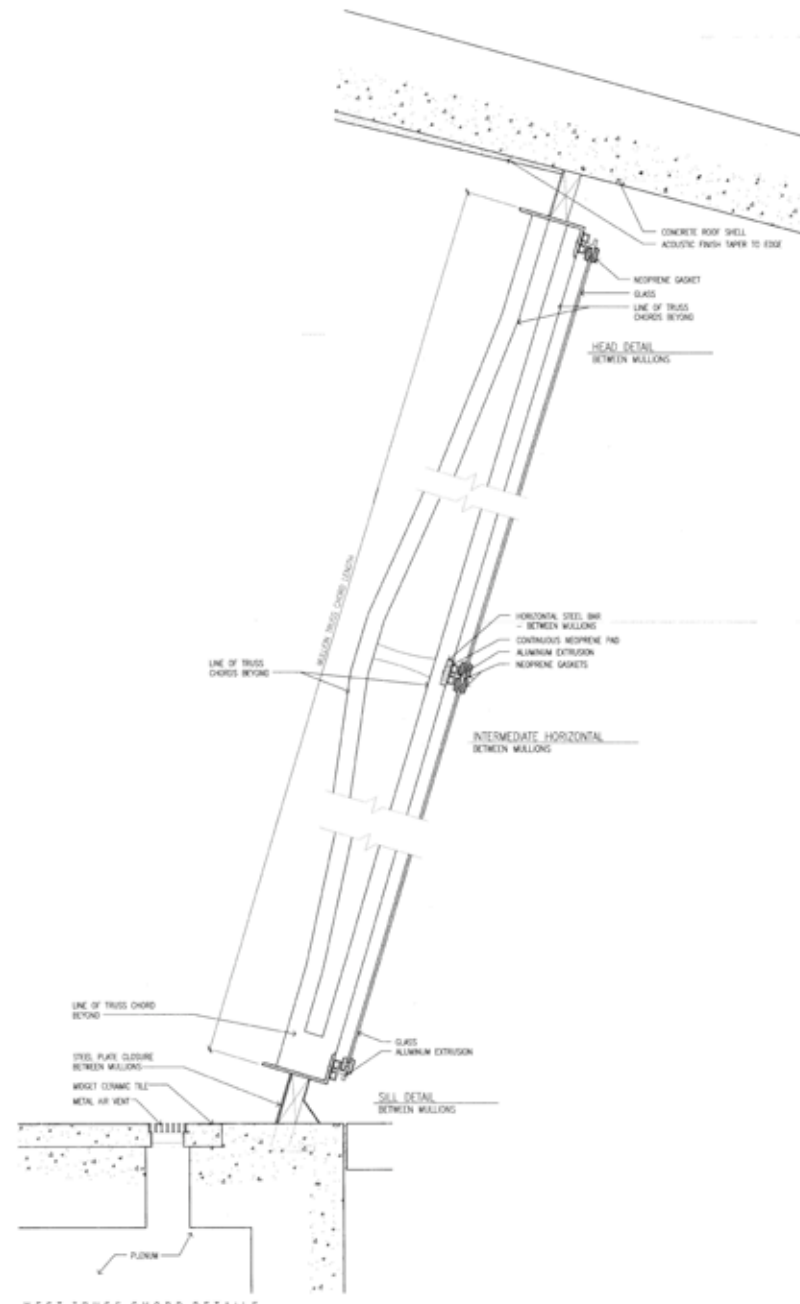


SOLARI BOARD FINISH PLAN

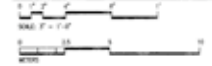


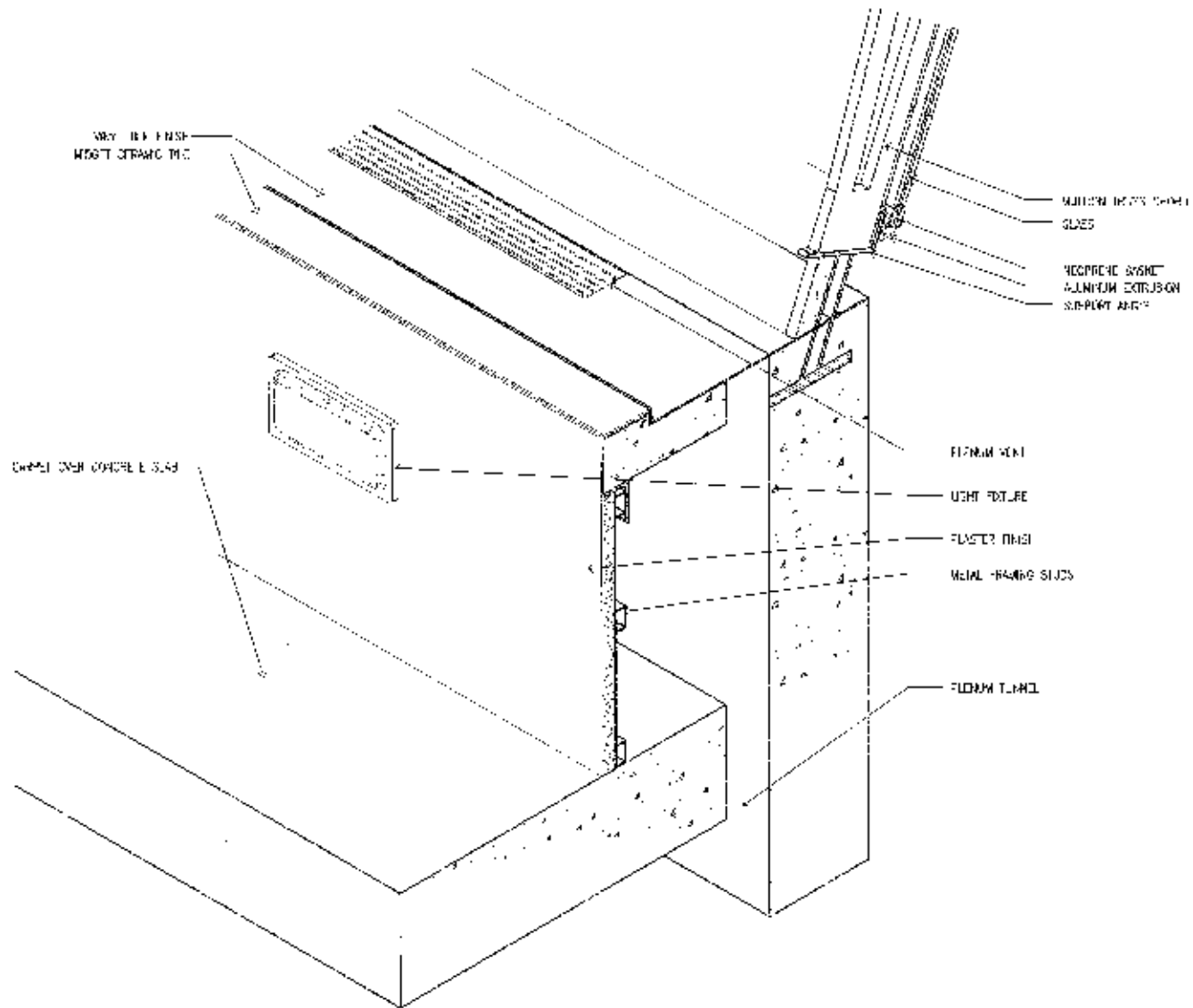


CERAMIC TILE DETAILS

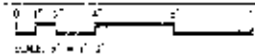


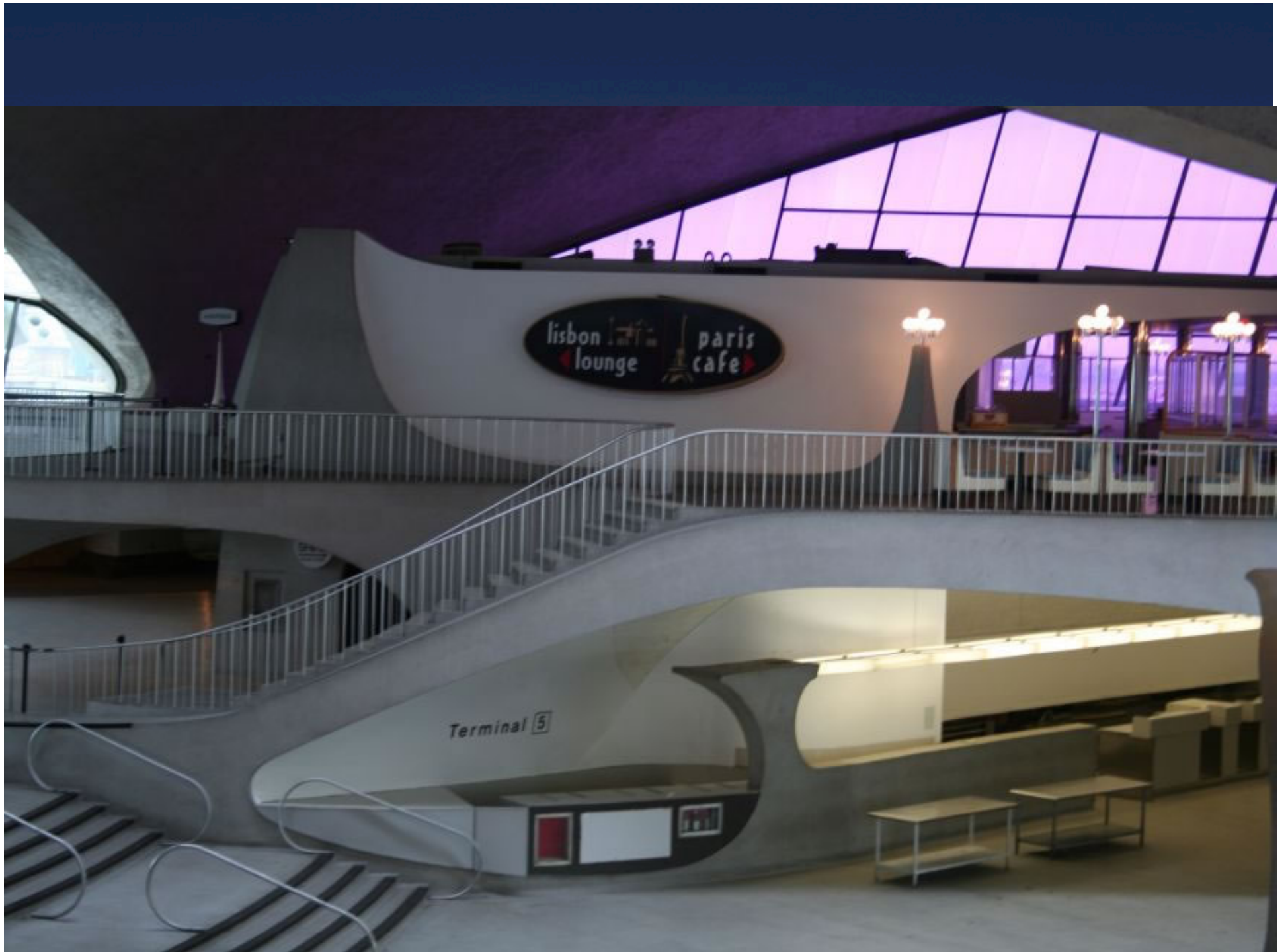
WEST TRUSS CHORD DETAILS



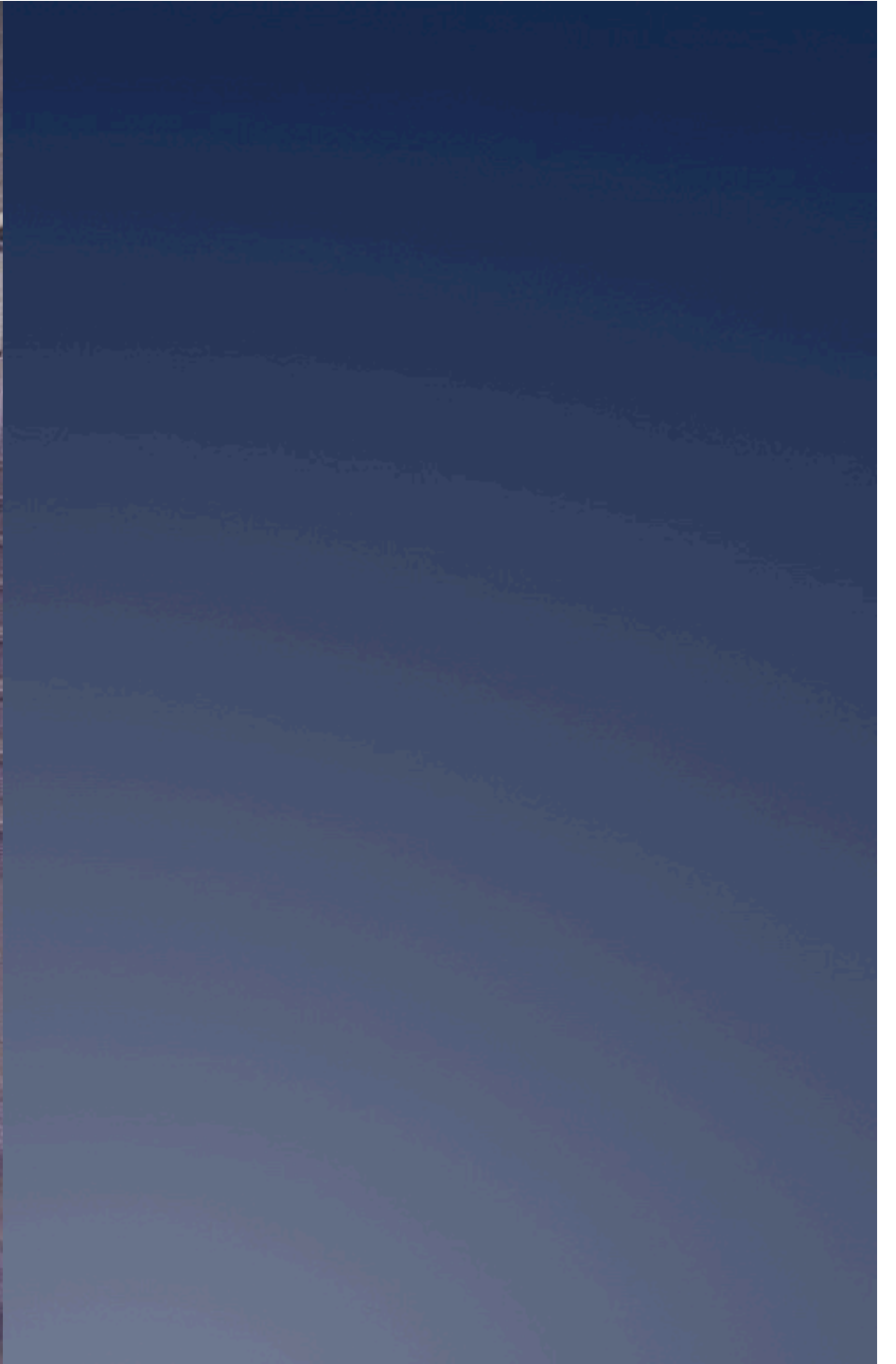


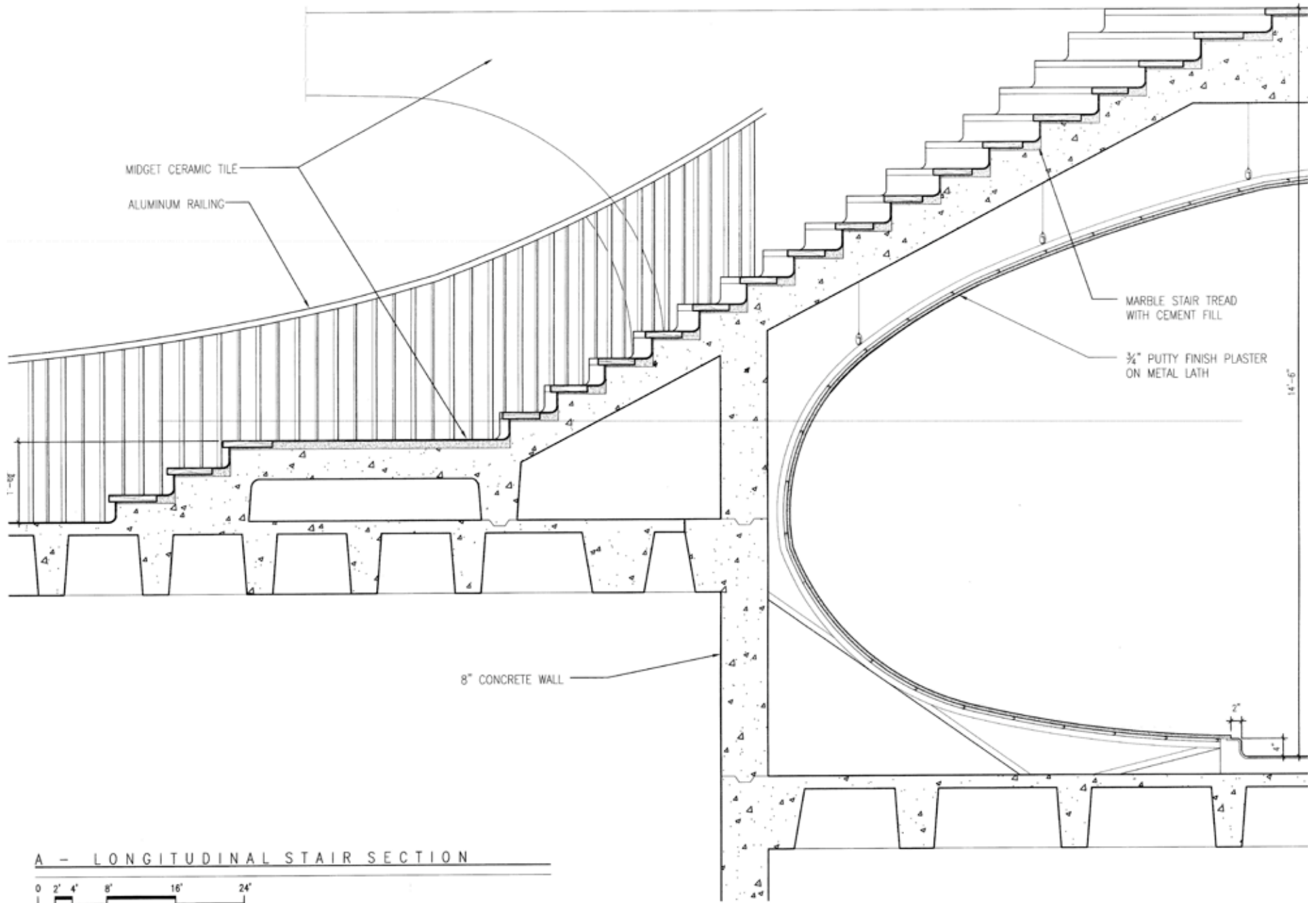
FAST TRACK CHORD BASE DETAIL







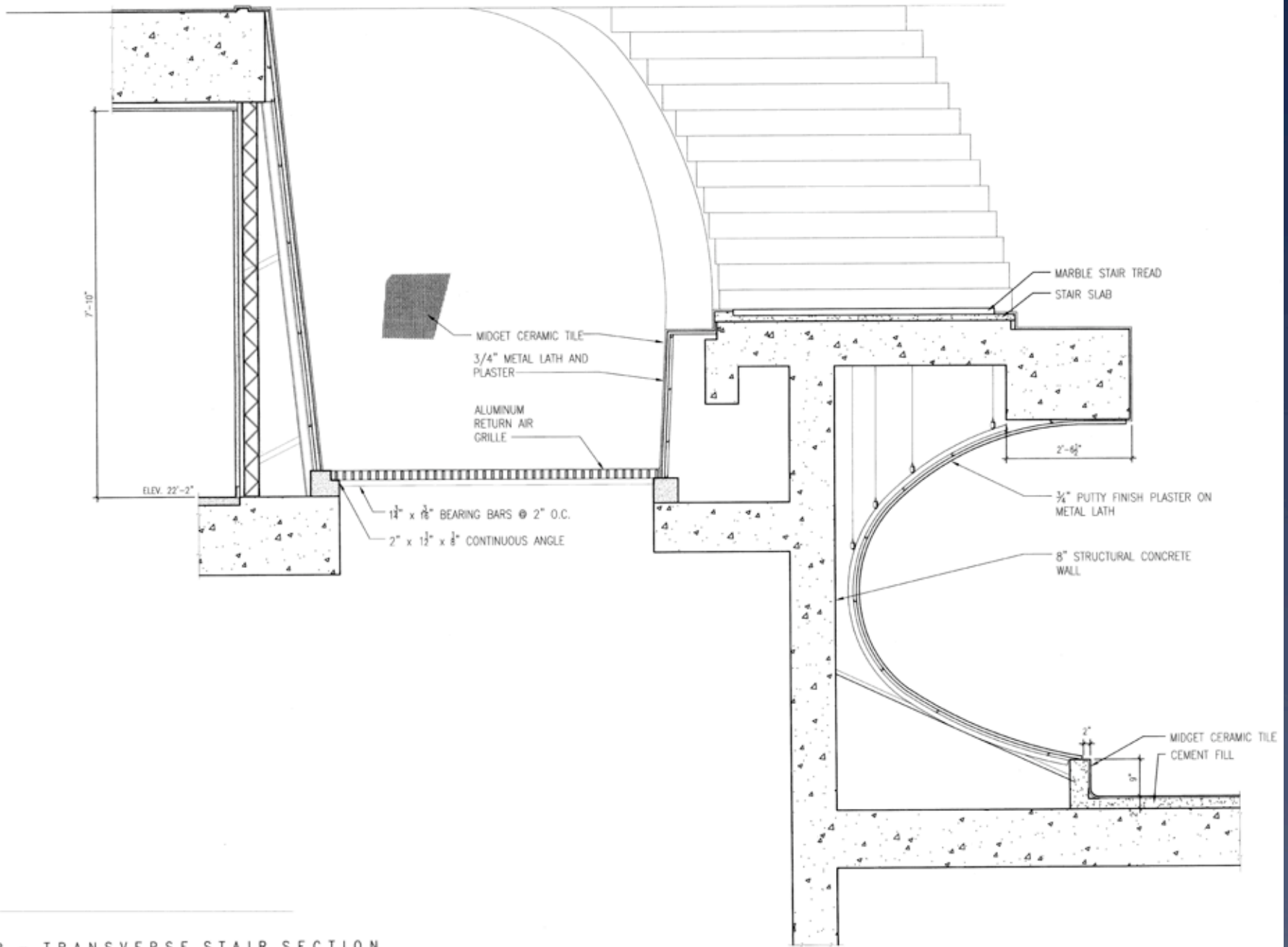




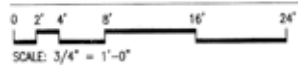
A - LONGITUDINAL STAIR SECTION

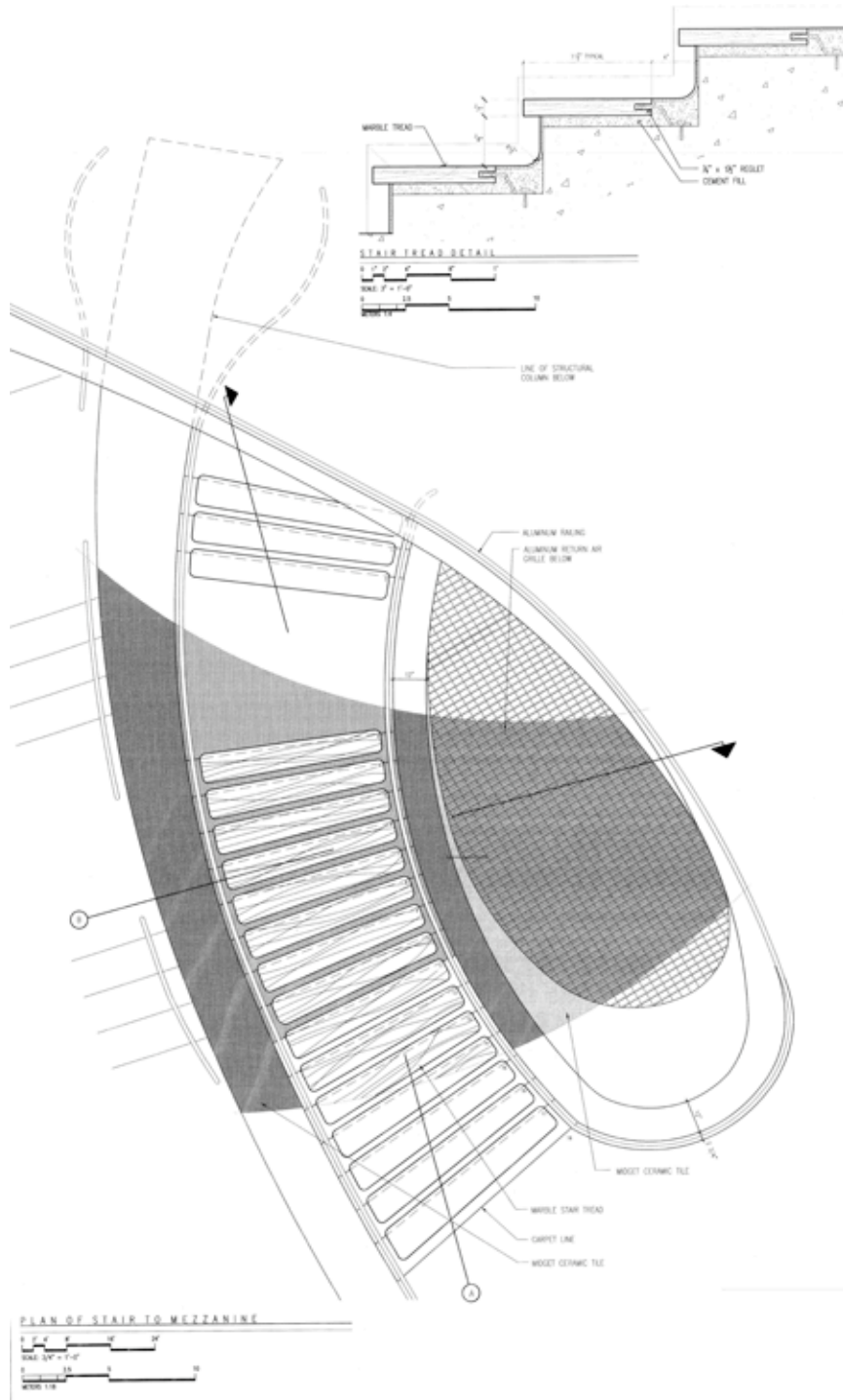


SCALE: 3/4" = 1'-0"



B - TRANSVERSE STAIR SECTION





Drawings from Historic American Buildings Survey (HABS)

http://memory.loc.gov/cgi-bin/query/D?hh:1:./temp/~ammem_J4ro::



