

# Unitized Precast



Historic context

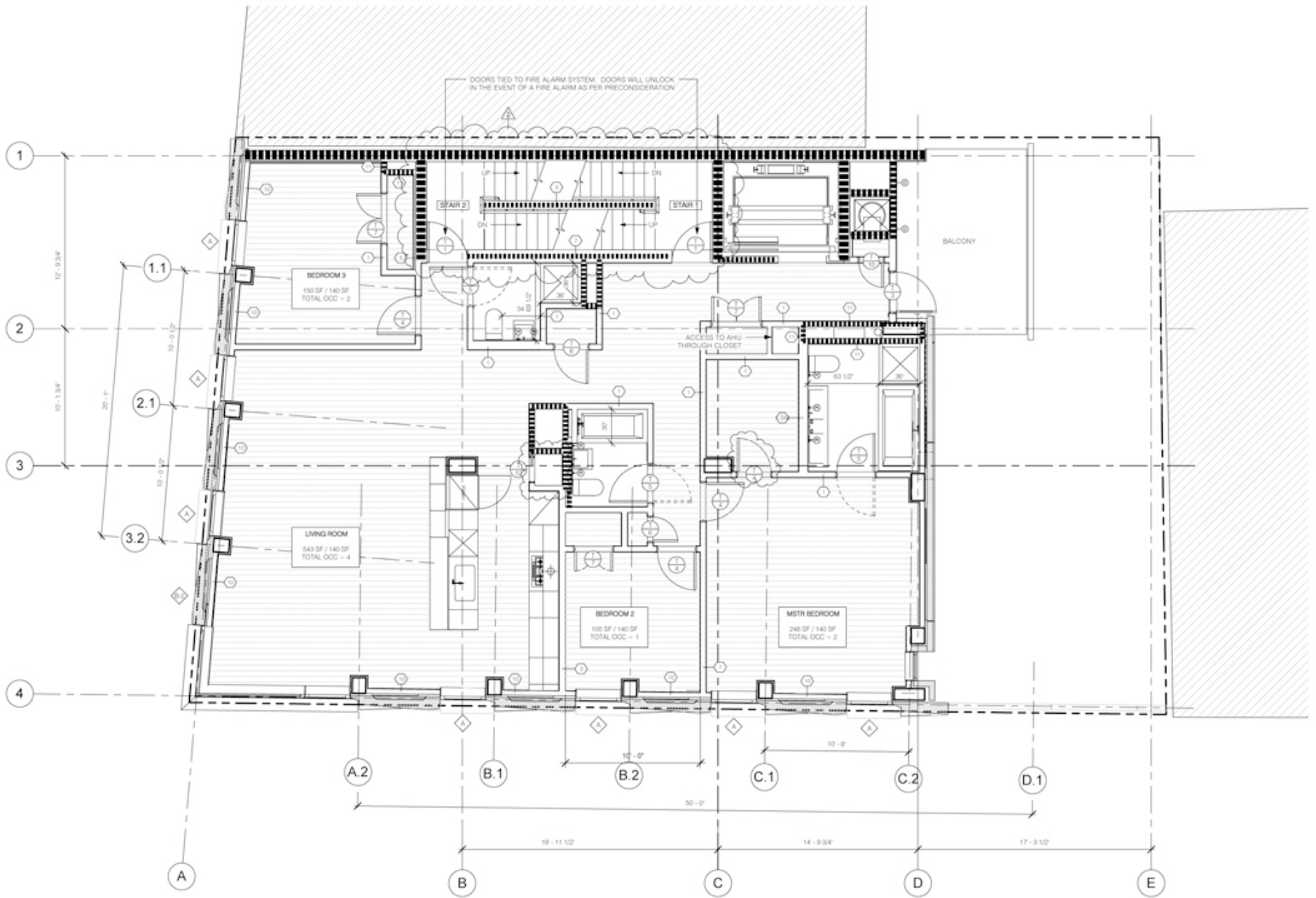
Masonry mandate

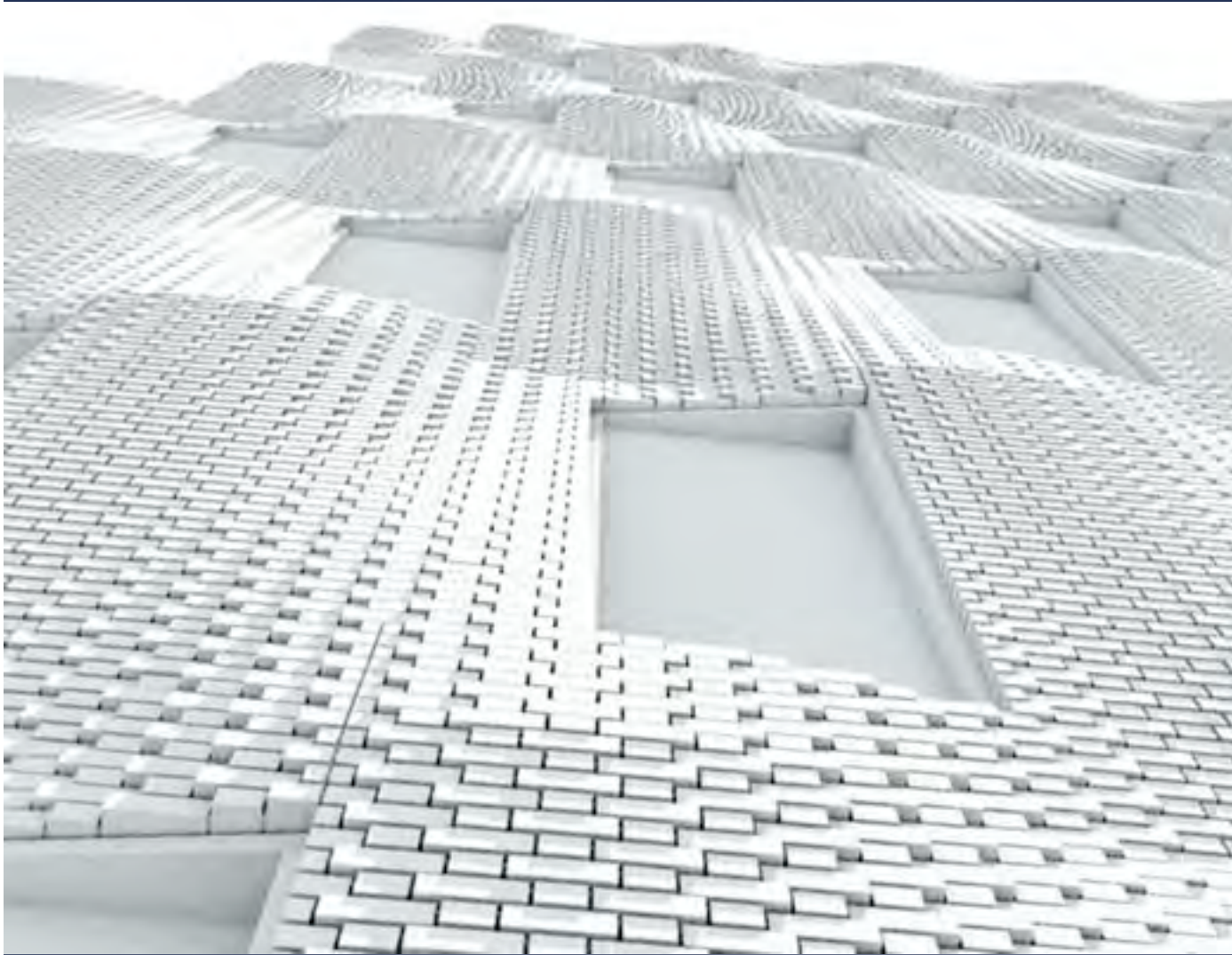
Real estate pressure  
for thinness

Zoning for corbels  
(10.s.f of each 100 s.f.  
may extend beyond  
the property line)

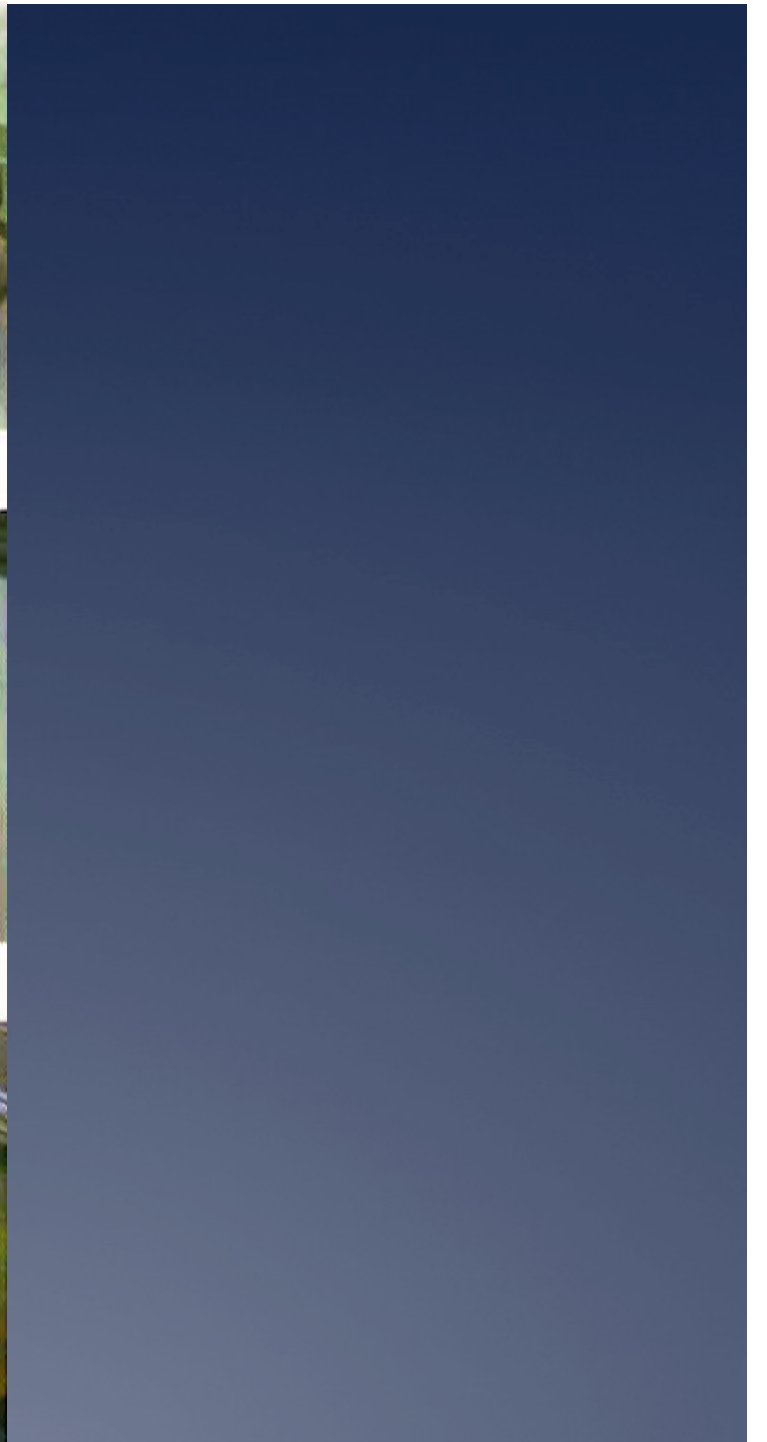
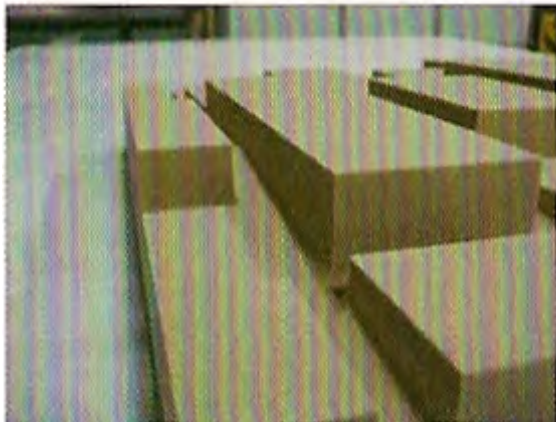
...provokes a 10 inch  
ripple

290 Mulberry Street, SHOP  
Architects (Steve Sanderson)



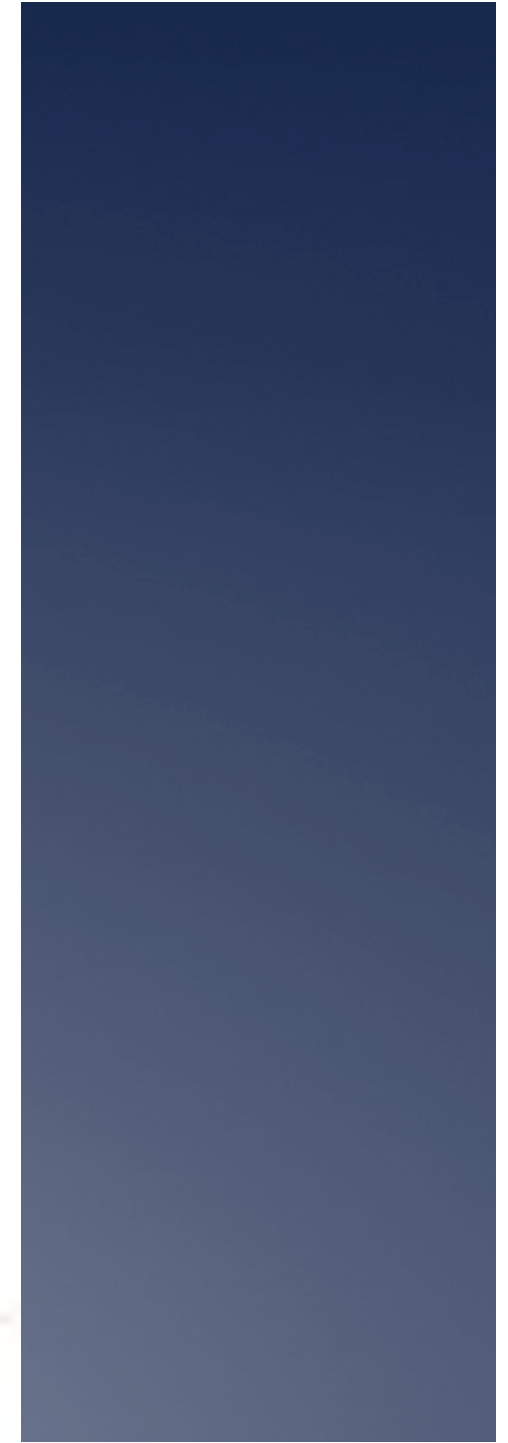
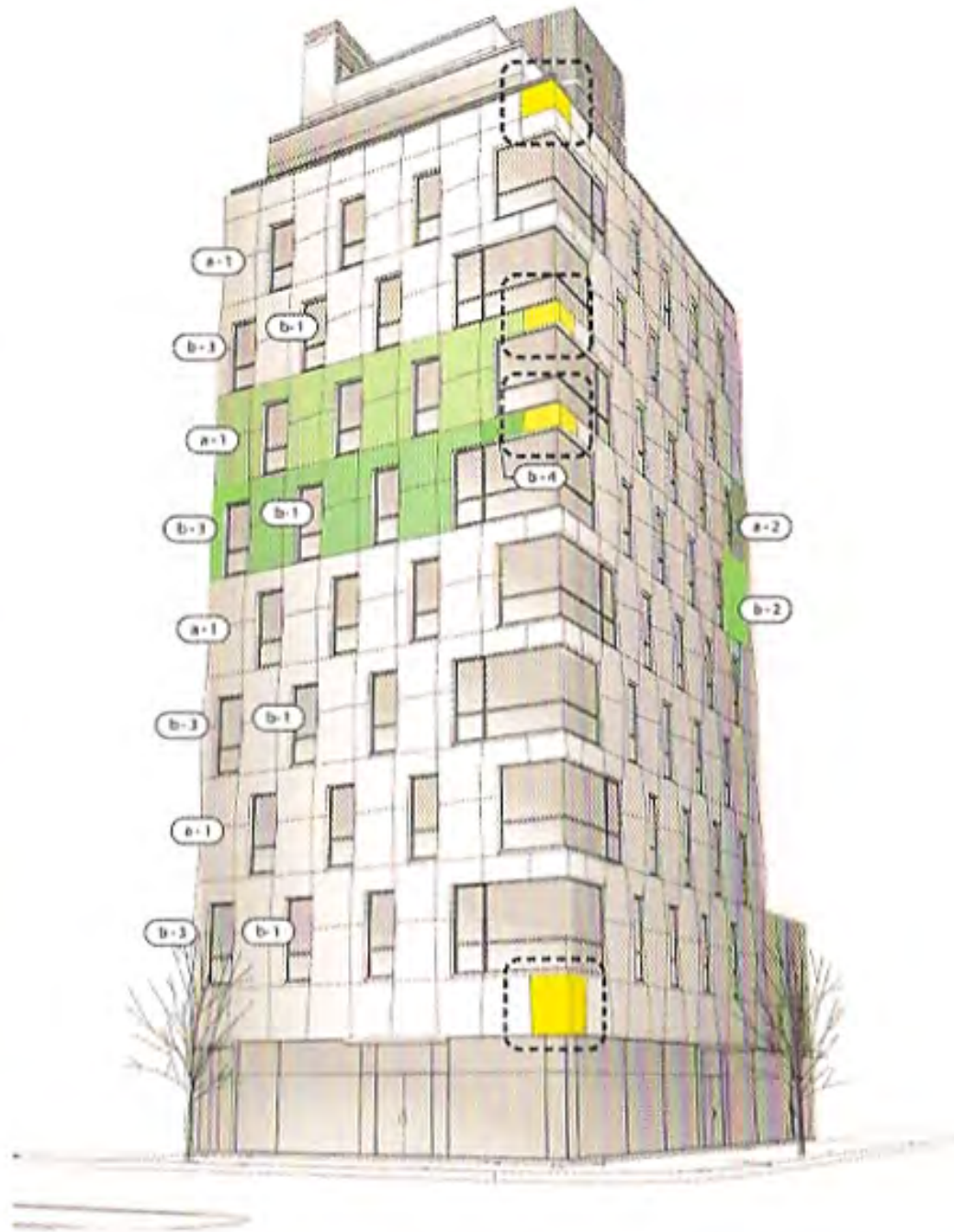
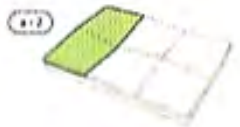


A "panelized" brick wall  
(rendering)









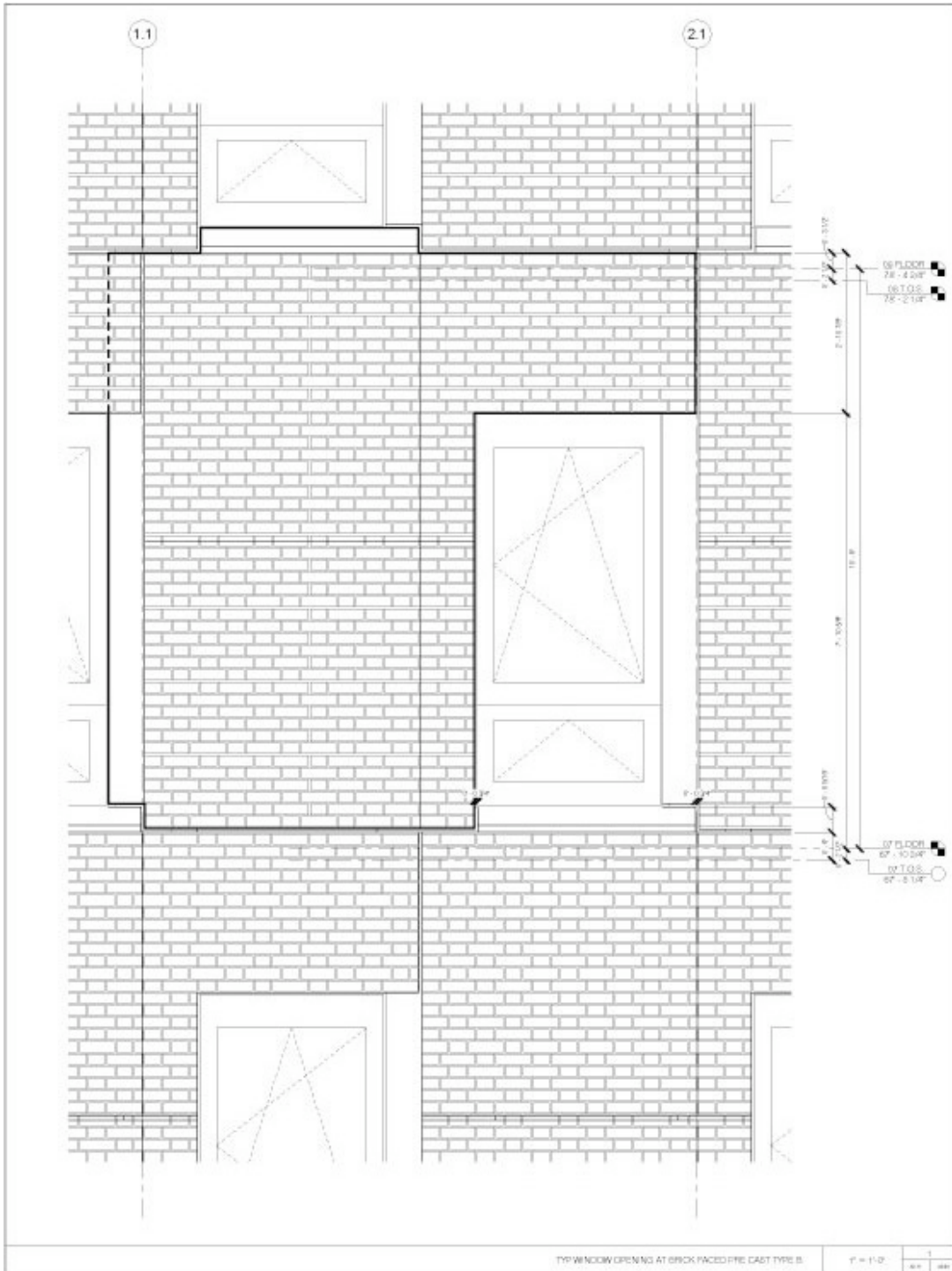




Bonded to a precast concrete backing



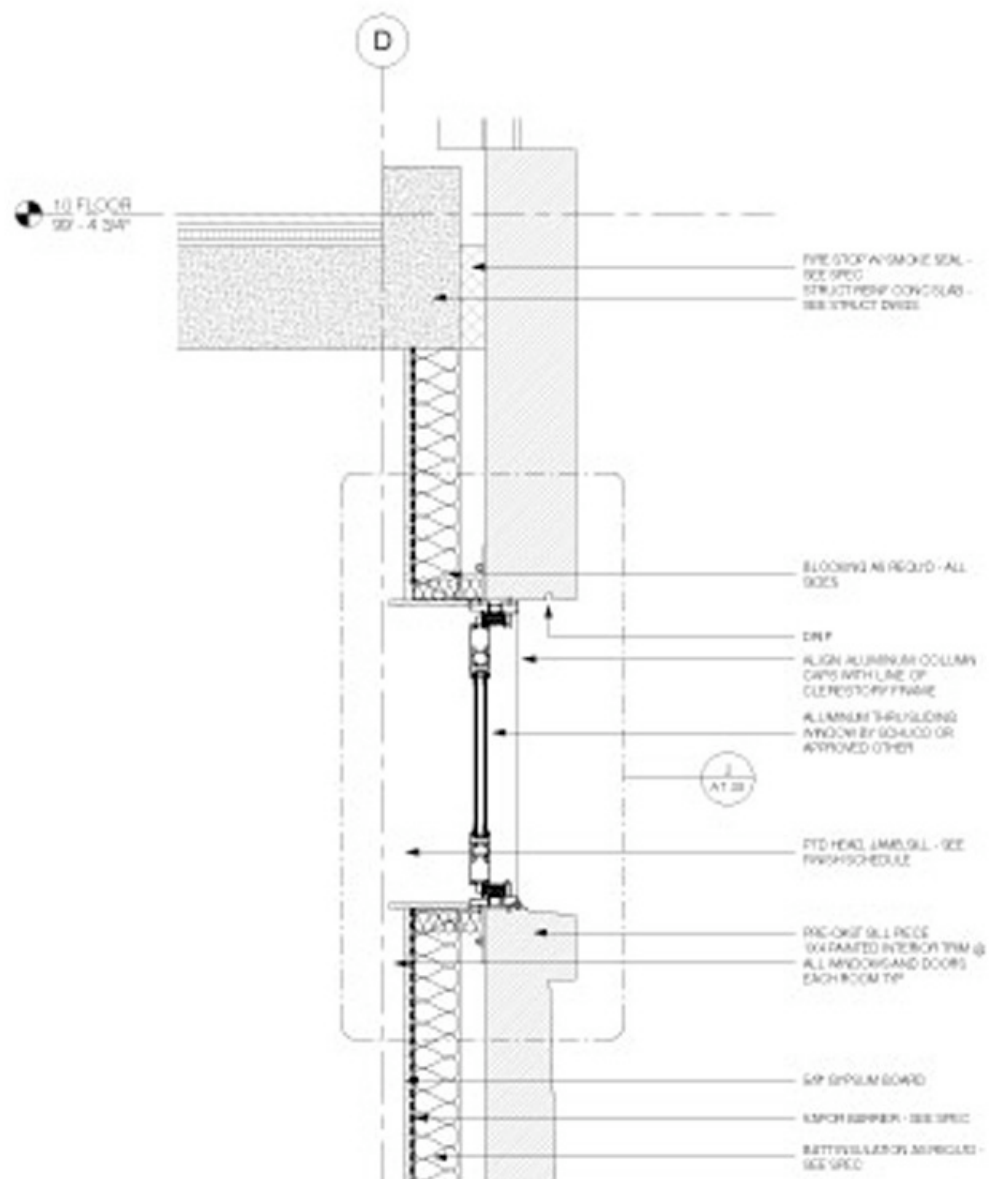


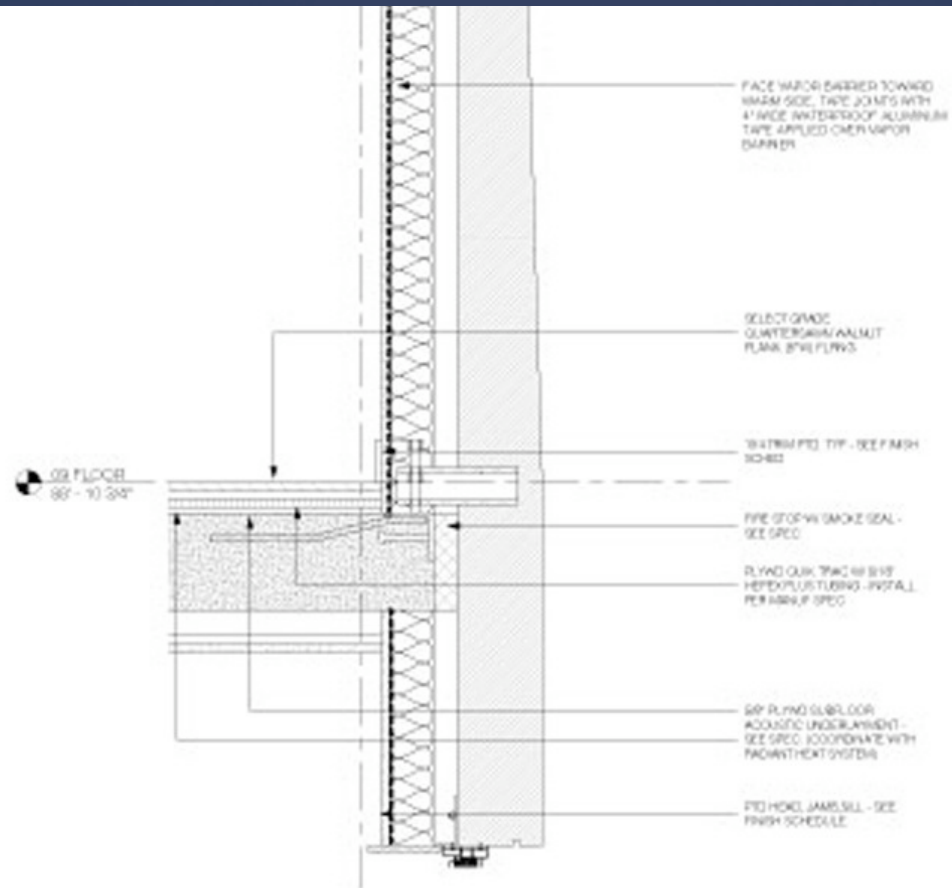


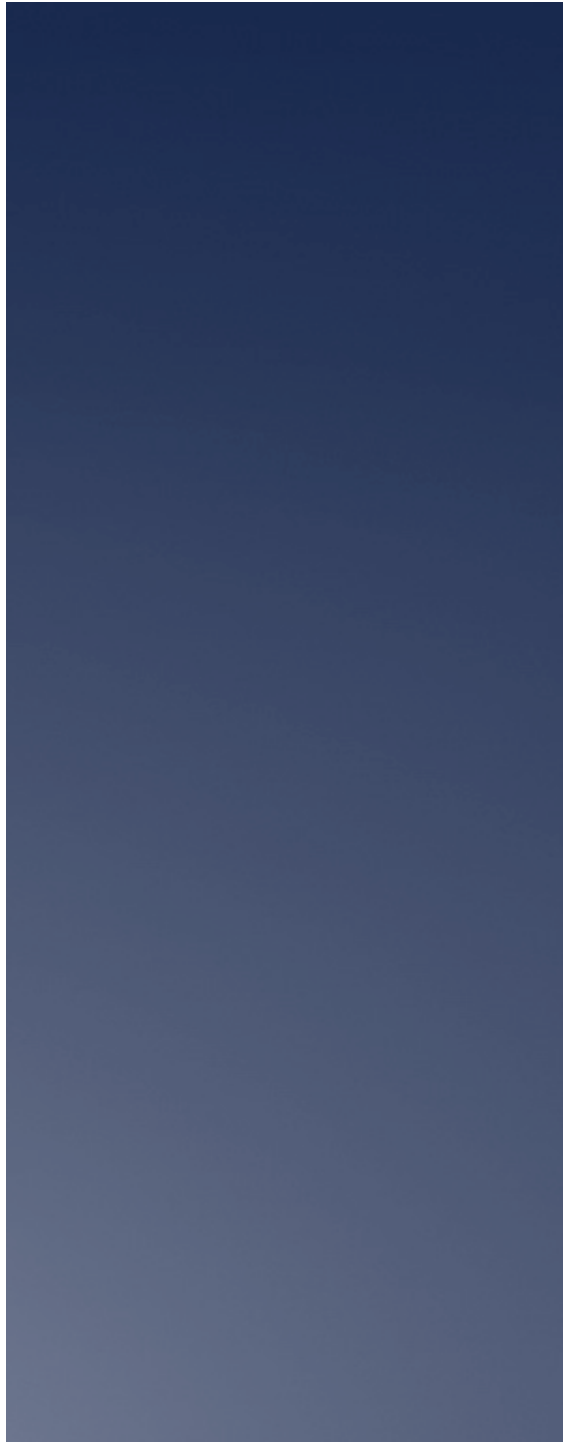
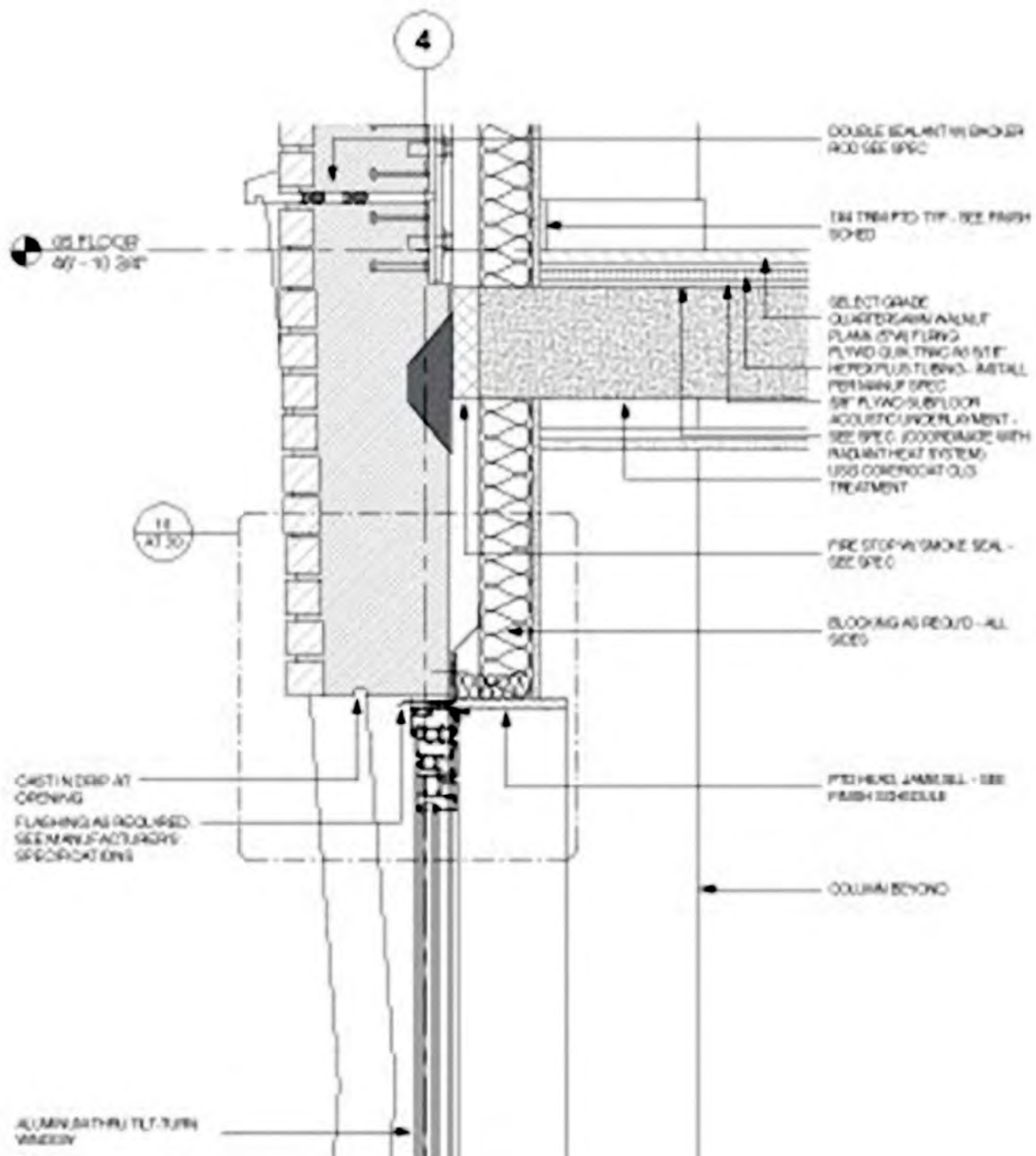
TYP WINDOW OPENING AT BRICK FACED PRE-CAST TYPE B

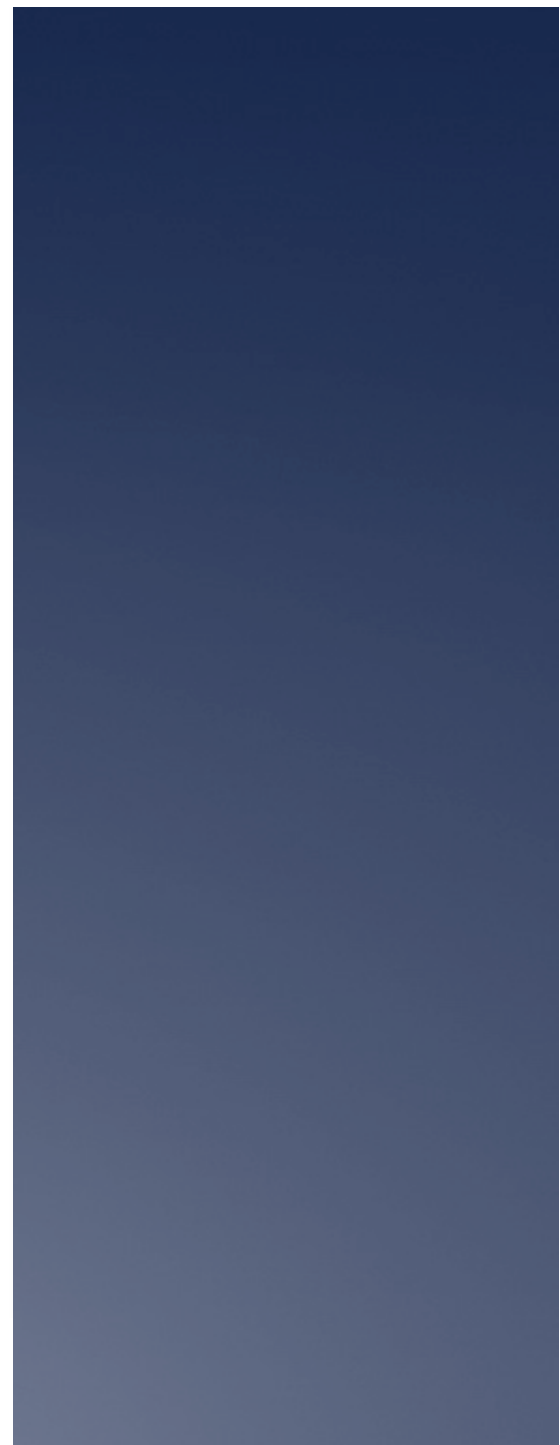
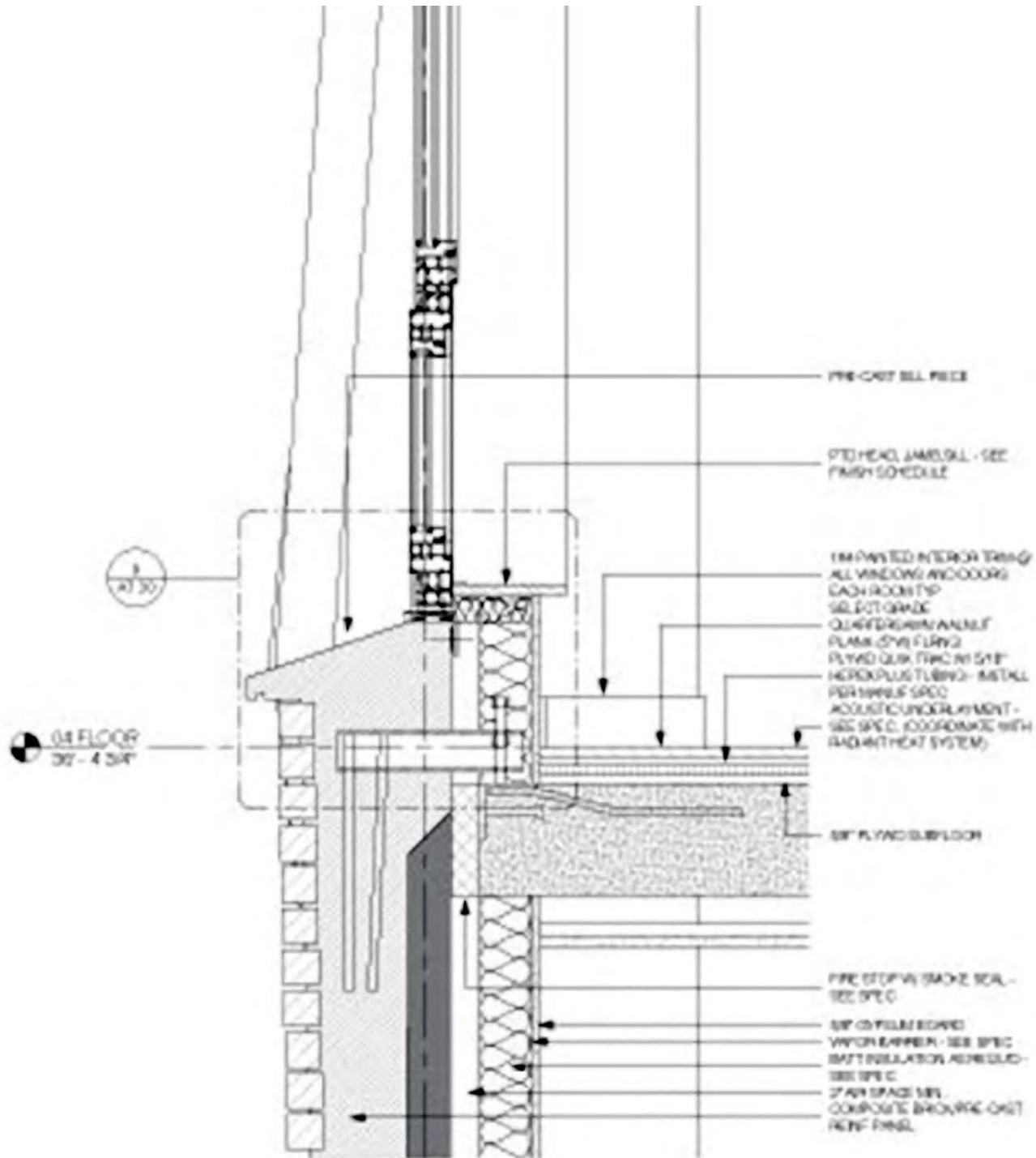
1" = 1'-0"

1	1
REV	DATE





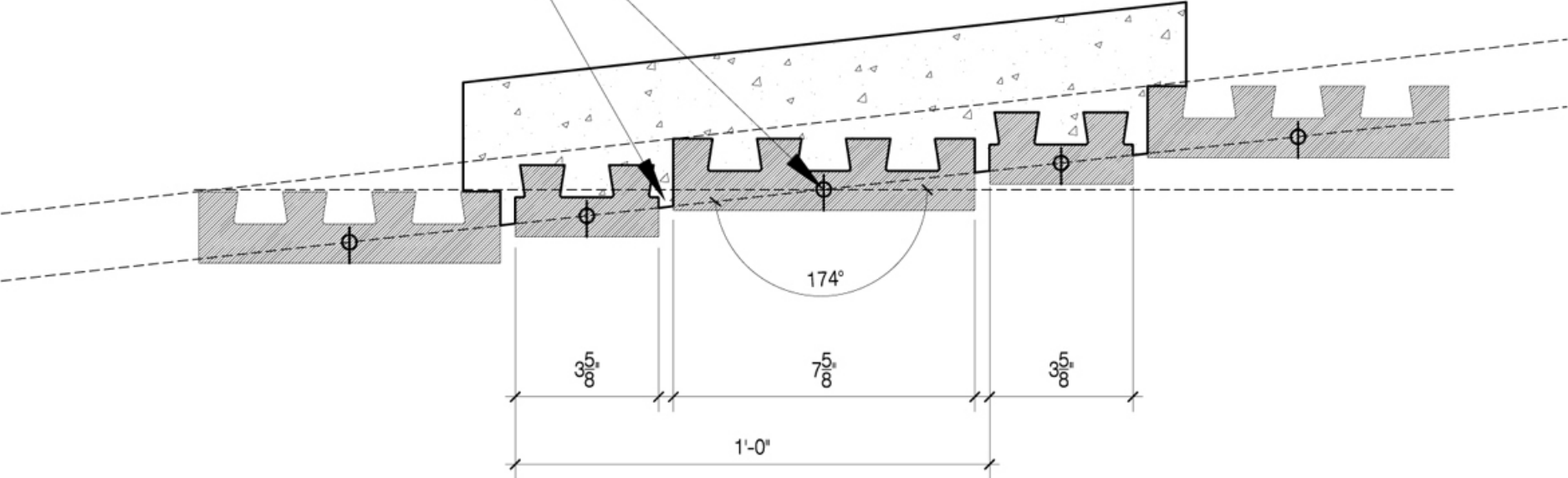




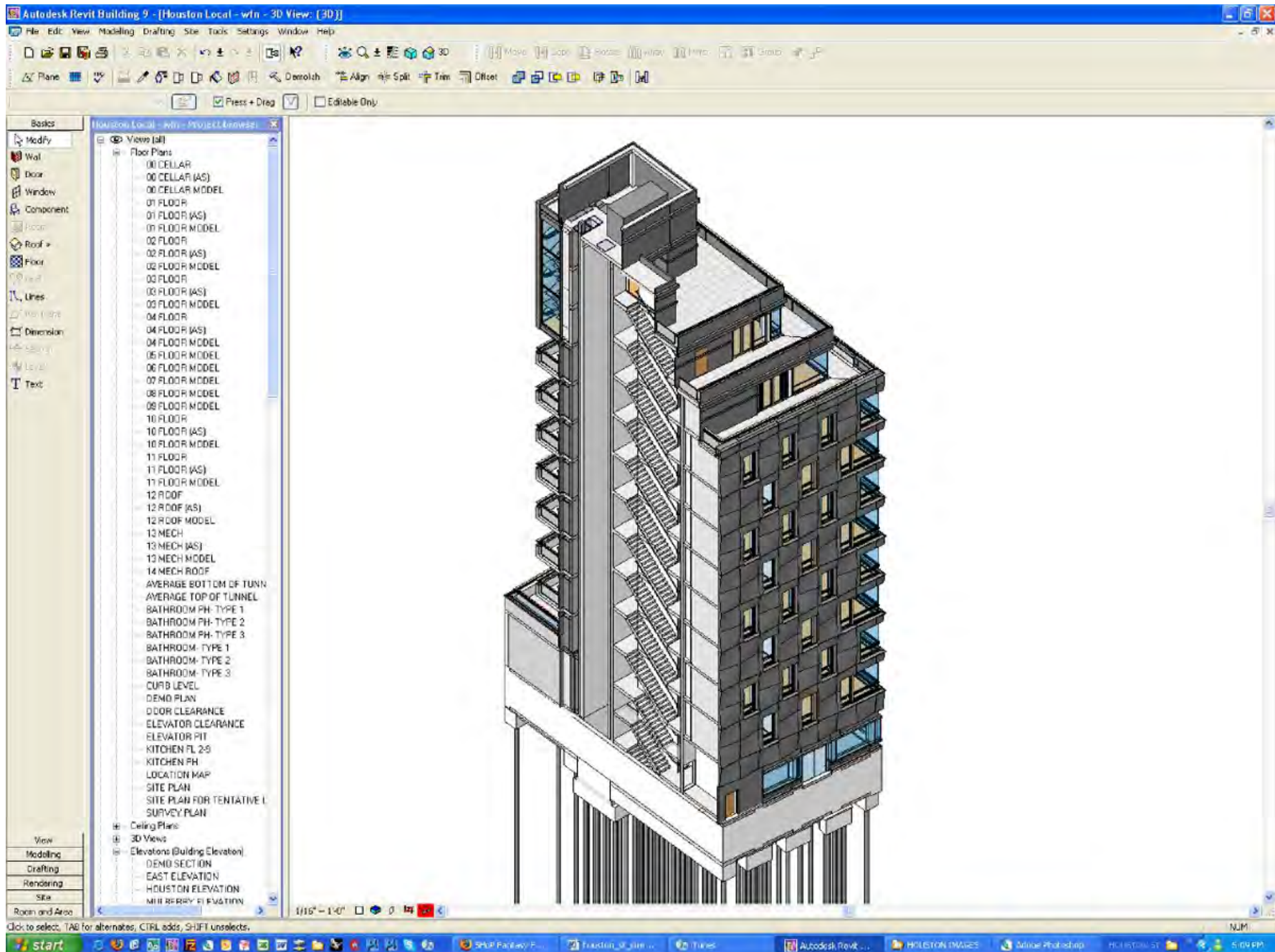


ACTUAL CONDITION WITH PANEL AS DESIGNED

WORKPOINT OF BRICK UNIT AT  
 $\frac{1}{2}$ " FROM FACE AND CTRD ALONG LENGTH.  
 $\frac{1}{8}$ " EXPOSURE OF FACE OF BRICK  
FROM MORTAR JOINT.







Supported by Revit's BIM technology









A great flash animation can be found at  
<http://www.290mulberry.com/#/Nolita/>