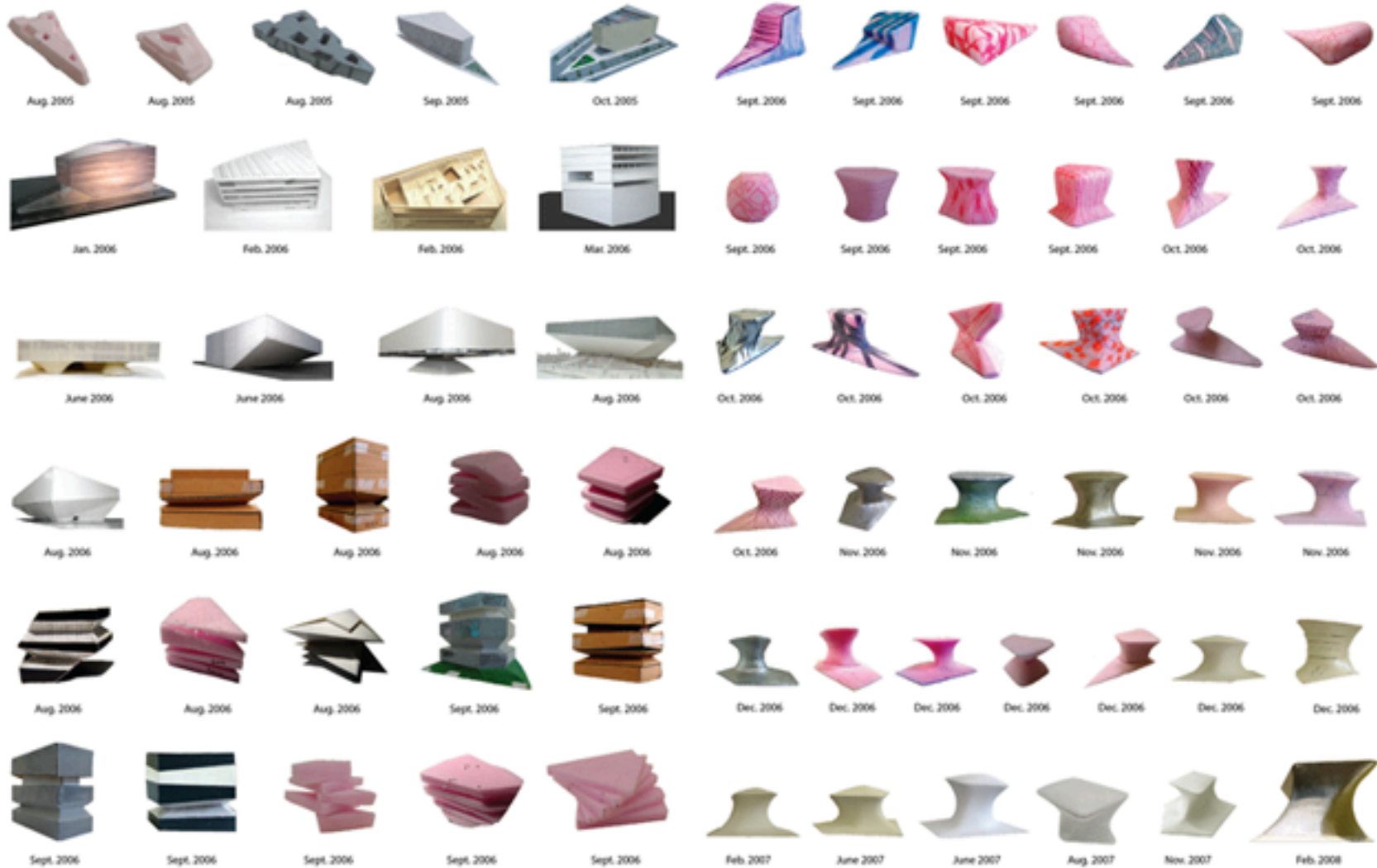
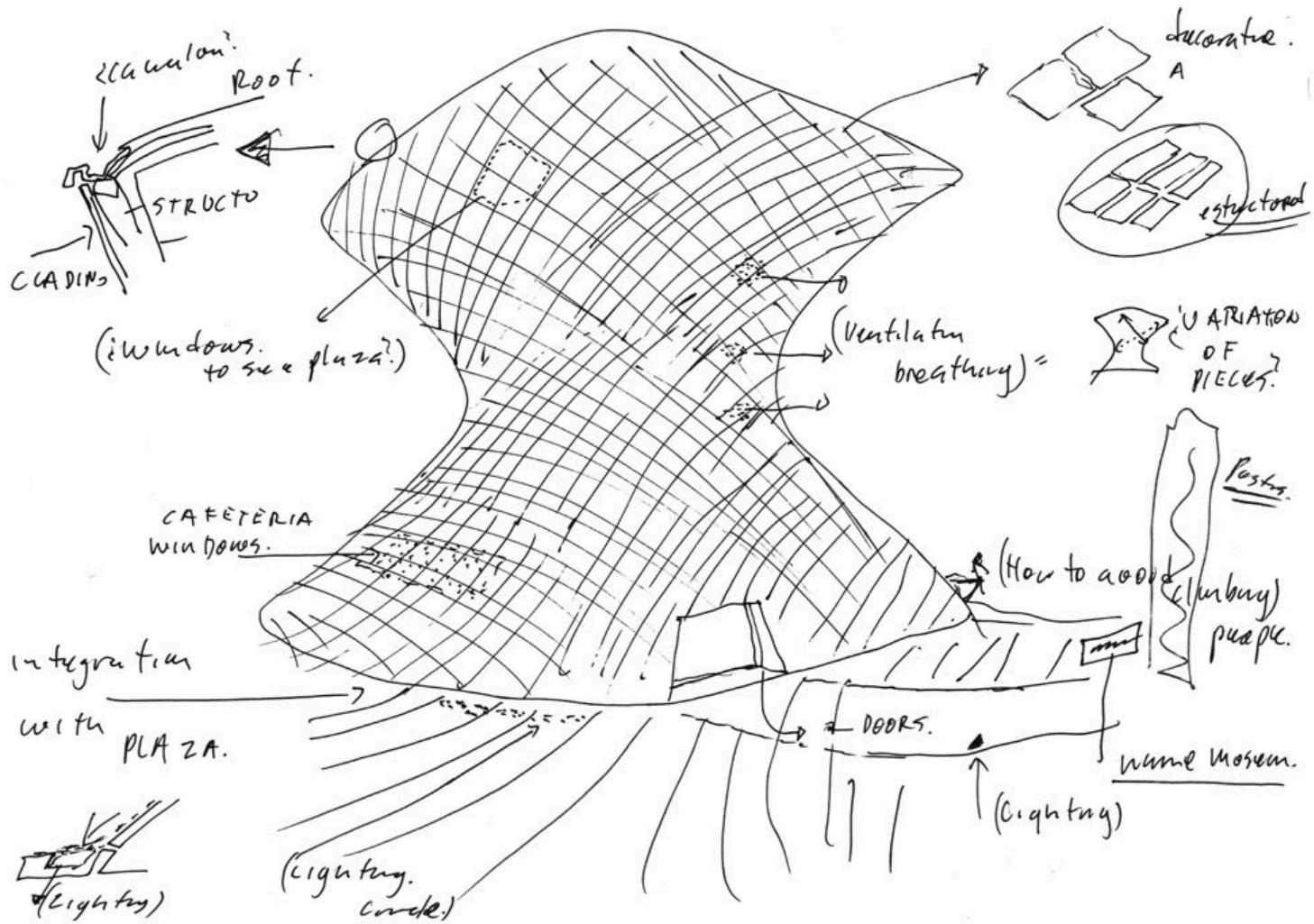


Museo Soumaya

FR-EE/ Fernando Romero
Enterprises, Architect,
Mexico City













MUSEO SOUMAYA | PLAZA CARSO

SALA 6

Jackson y Linda Stein
LA ERA DE RODIN



[1]

SALA 5

DEL MÉXICO ANTIGUO
AL MODERNO



[2]

SALA 4

NATURALEZA Y PINCELES.
DEL IMPRESIONISMO
A LAS VANGUARDIAS



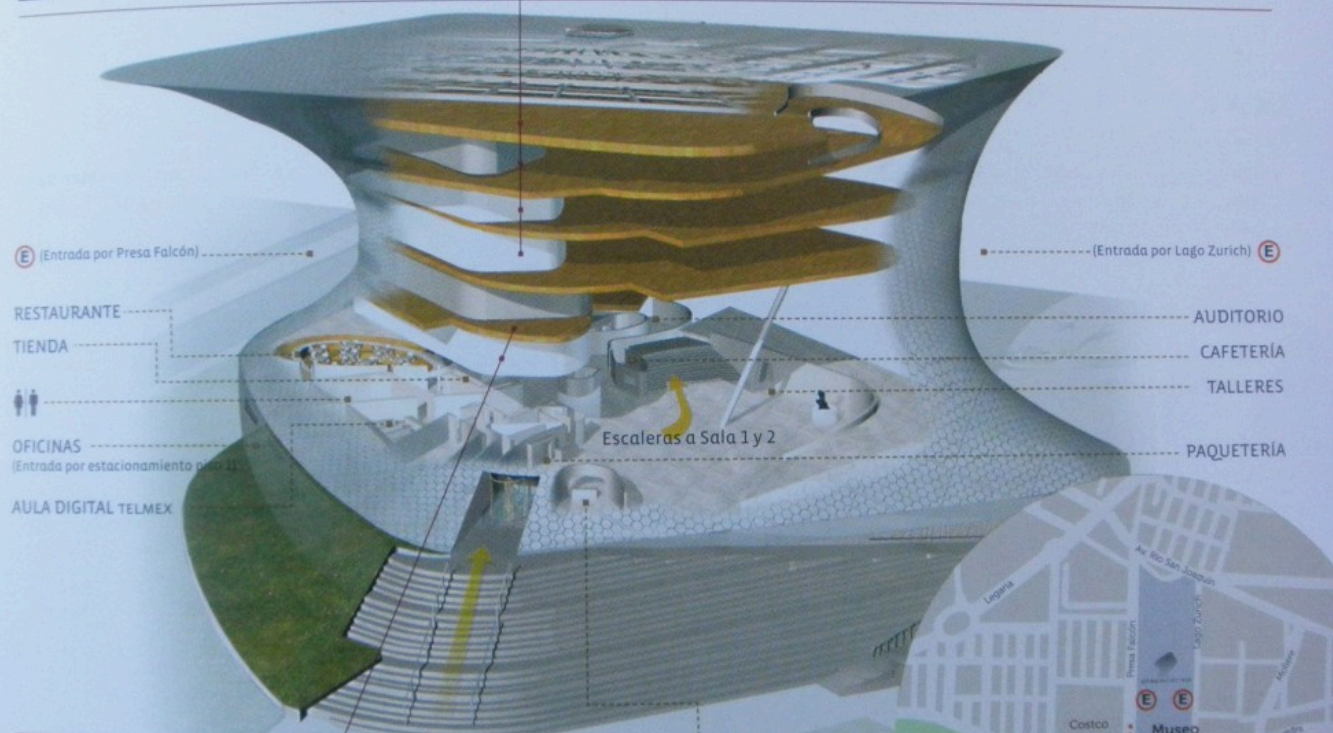
[3]

SALA 3

ANTIGUOS MAESTROS
EUROPEOS Y NOVOHISPANOS



[4]



SALA 1

ENTRE LOS MUNDOS:
ORO Y PLATA



[5]

SALA 2

EXPOSICIÓN TEMPORAL
ÚLTIMOS DÍAS



[6]

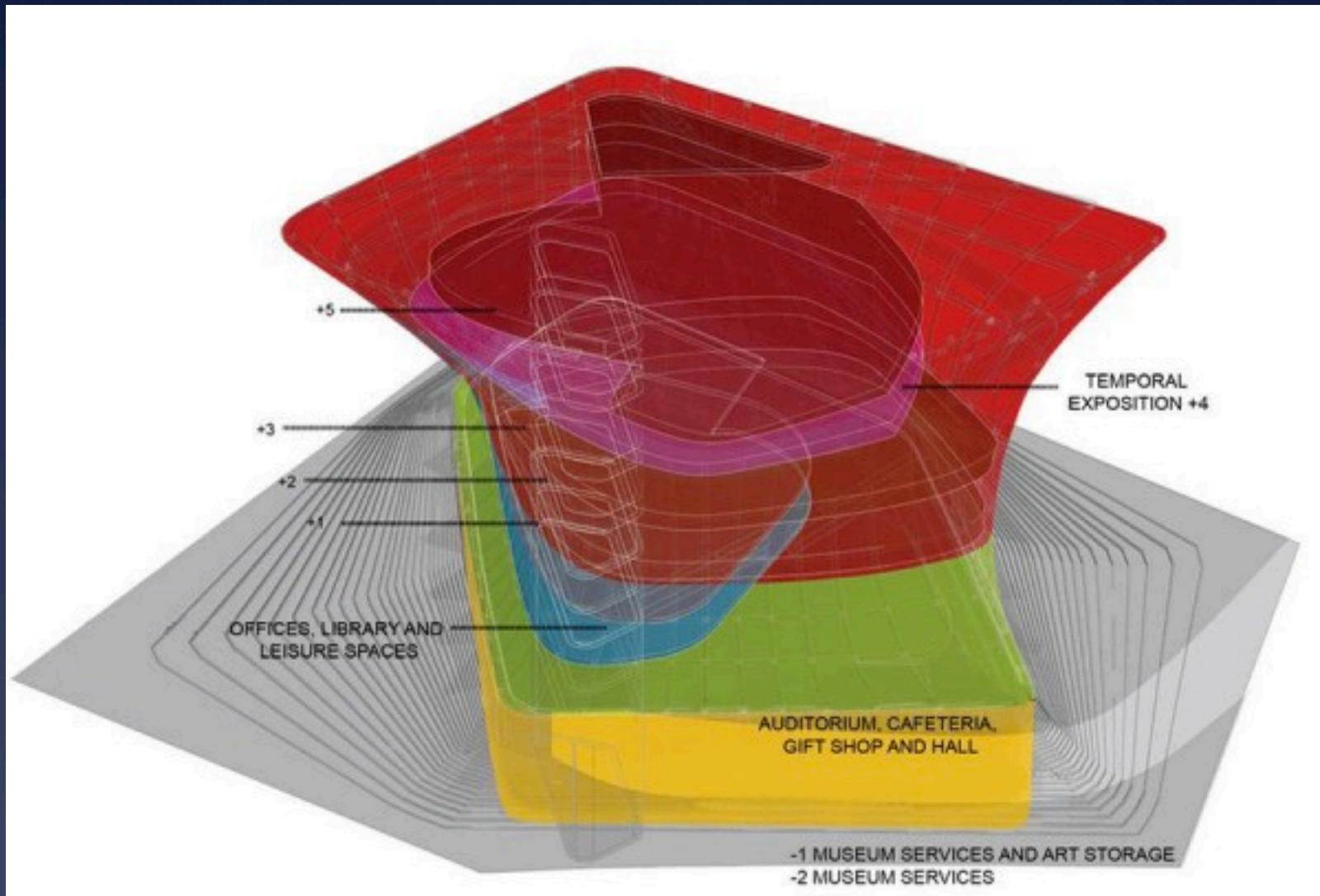
VESTÍBULO

INFORMACIÓN
(Visitas guiadas)

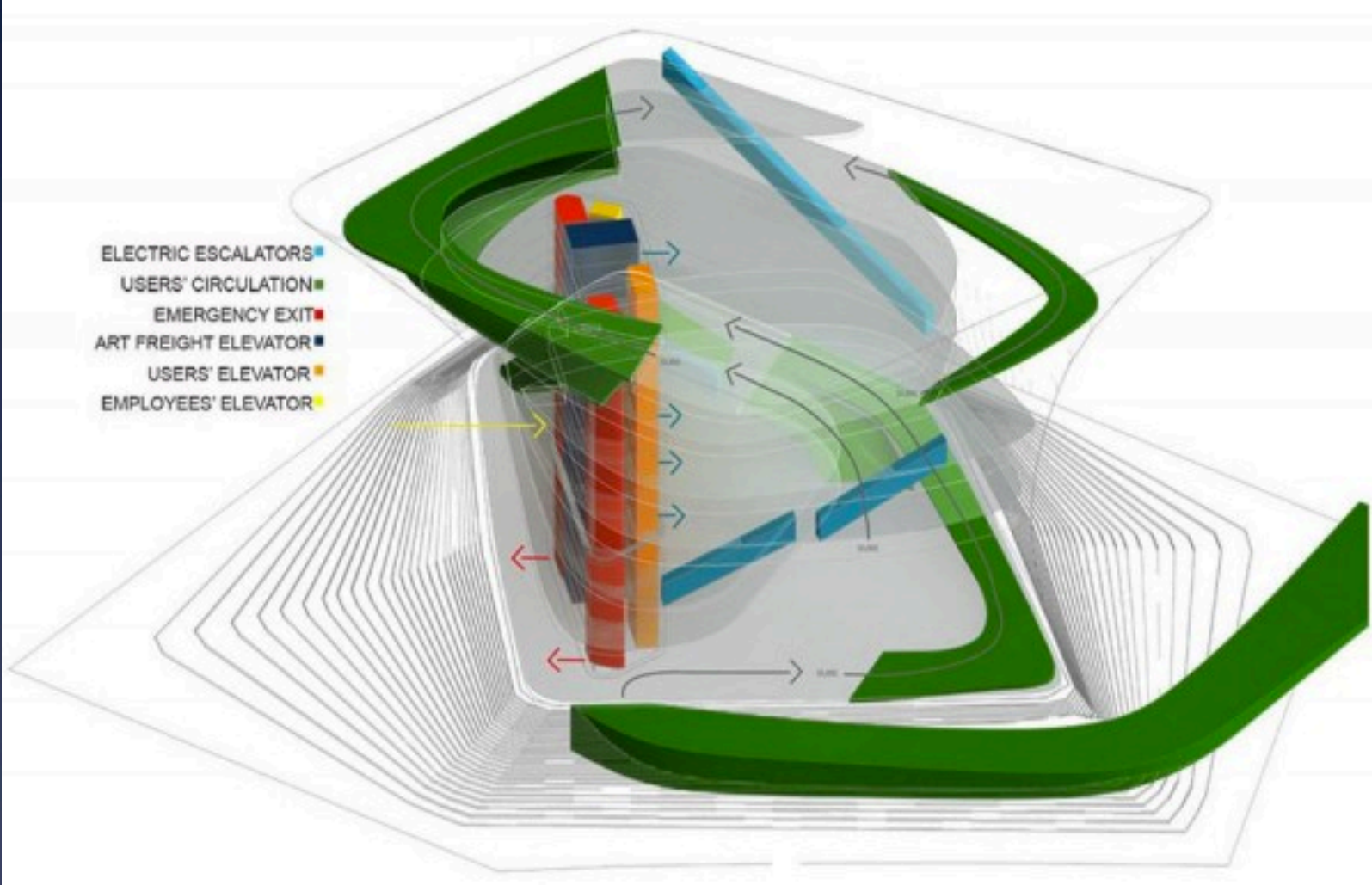


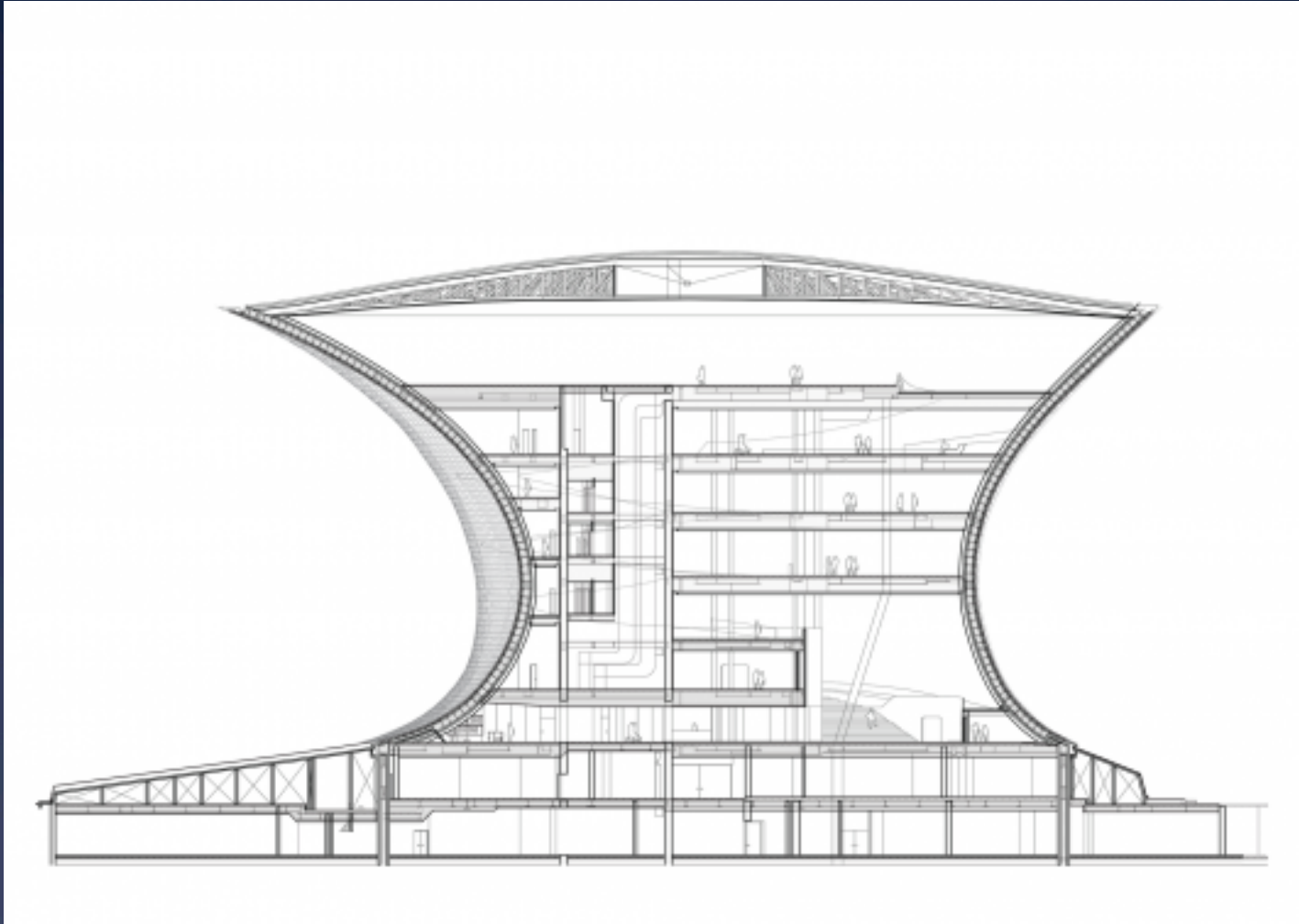
[7]





- ELECTRIC ESCALATORS ■
- USERS' CIRCULATION ■
- EMERGENCY EXIT ■
- ART FREIGHT ELEVATOR ■
- USERS' ELEVATOR ■
- EMPLOYEES' ELEVATOR ■













CORE
(GRAVITY FORCE)
SERVICE CONCRETE NUCLEUS
SUPPORTING THE 30% OF WEIGHT

COMPRESSION RINGS

STRUCTURAL BEAMS

HORIZONTAL
RINGS
(18" STEEL TUBES)

STEEL ■
CONCRETE ■

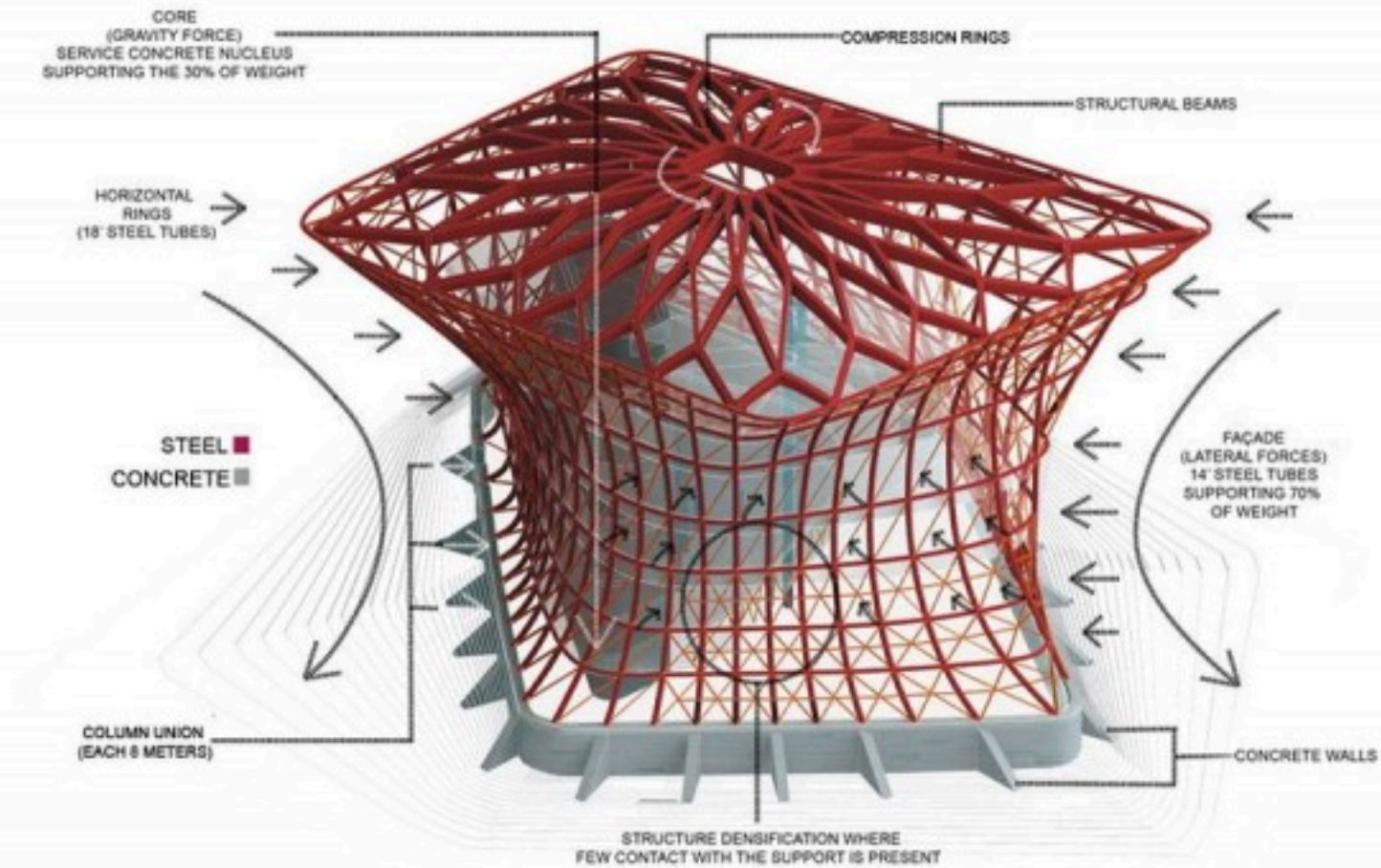
FAÇADE
(LATERAL FORCES)
14" STEEL TUBES
SUPPORTING 70%
OF WEIGHT

COLUMN UNION
(EACH 8 METERS)

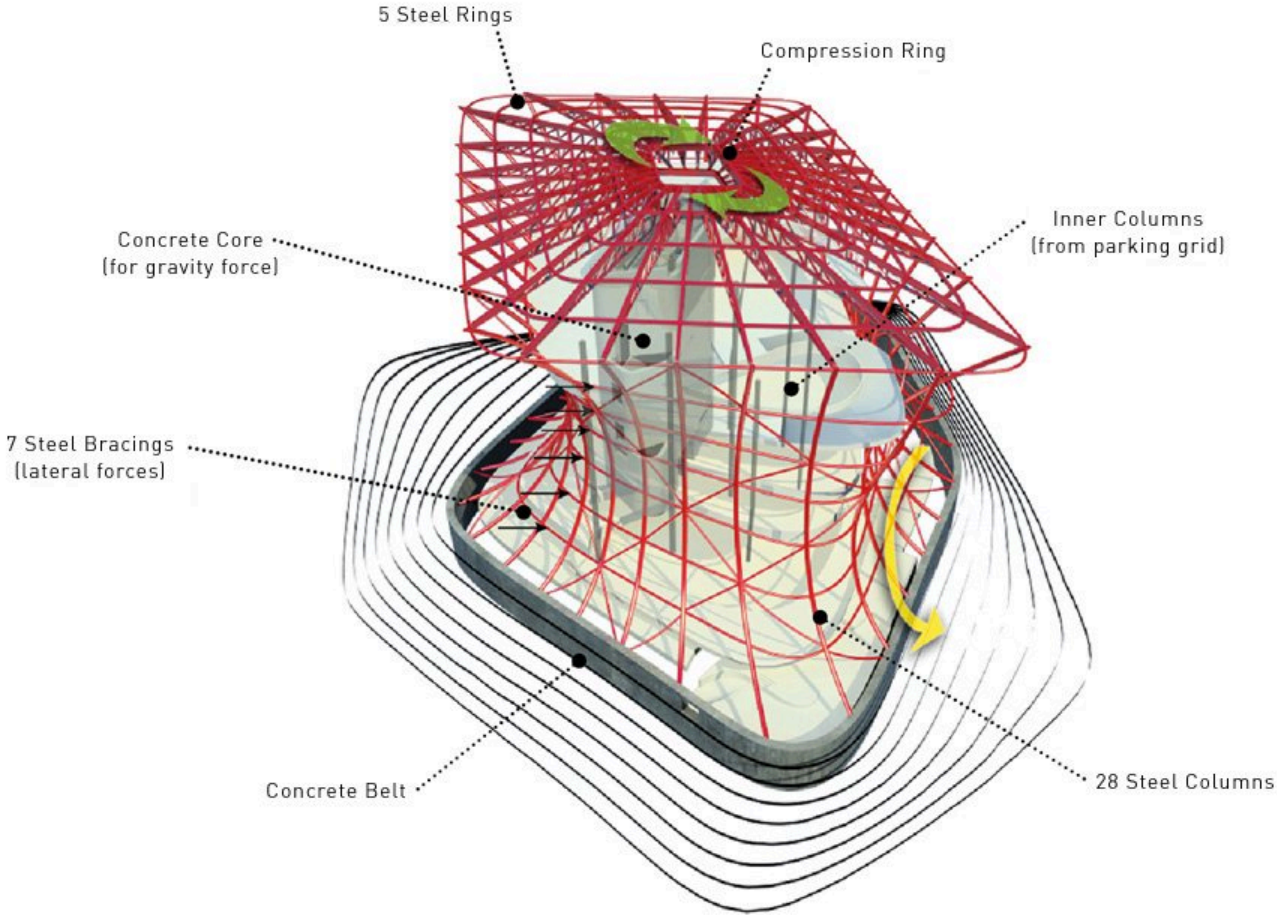
CONCRETE WALLS

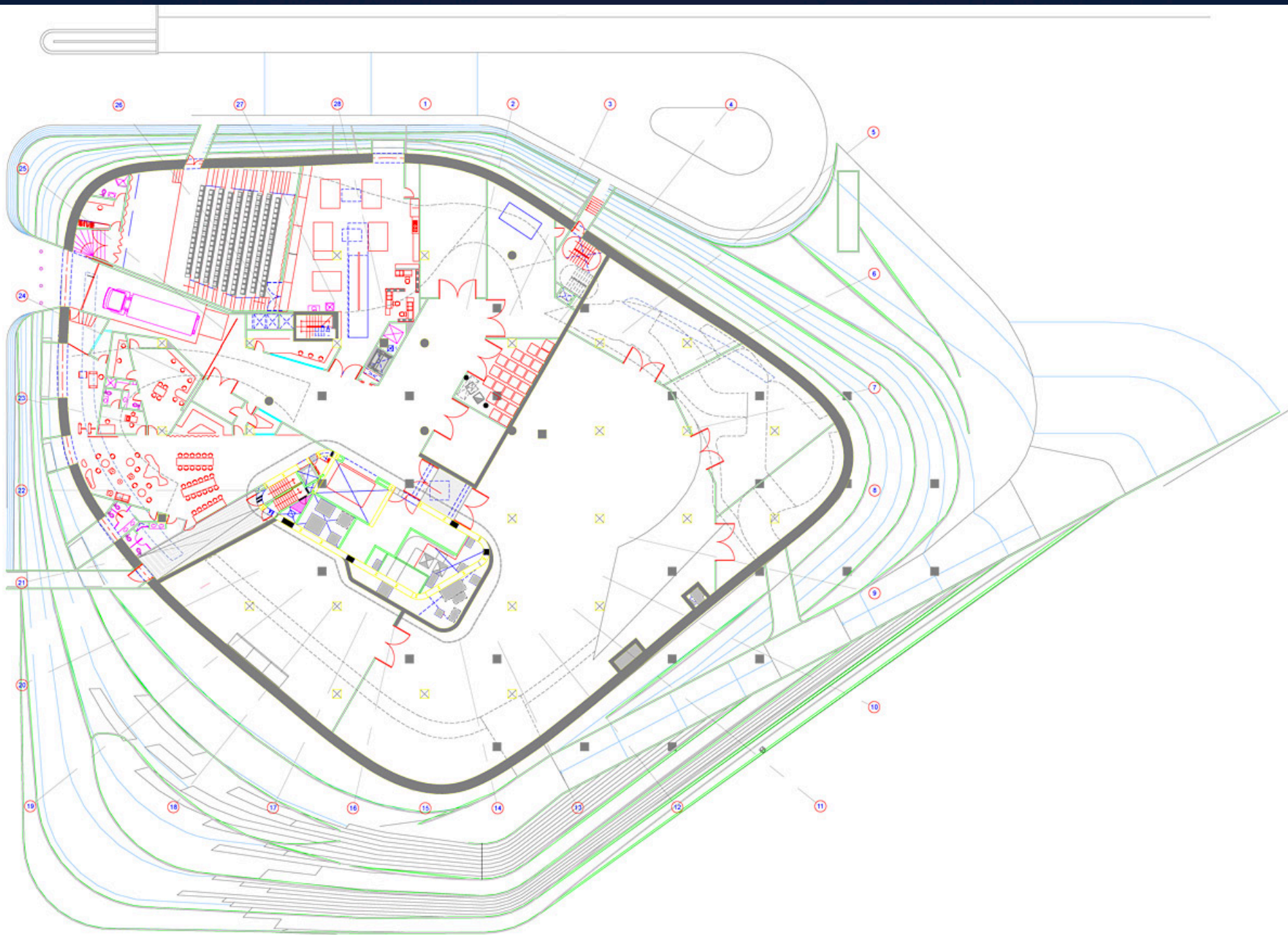
STRUCTURE DENSIFICATION WHERE
FEW CONTACT WITH THE SUPPORT IS PRESENT

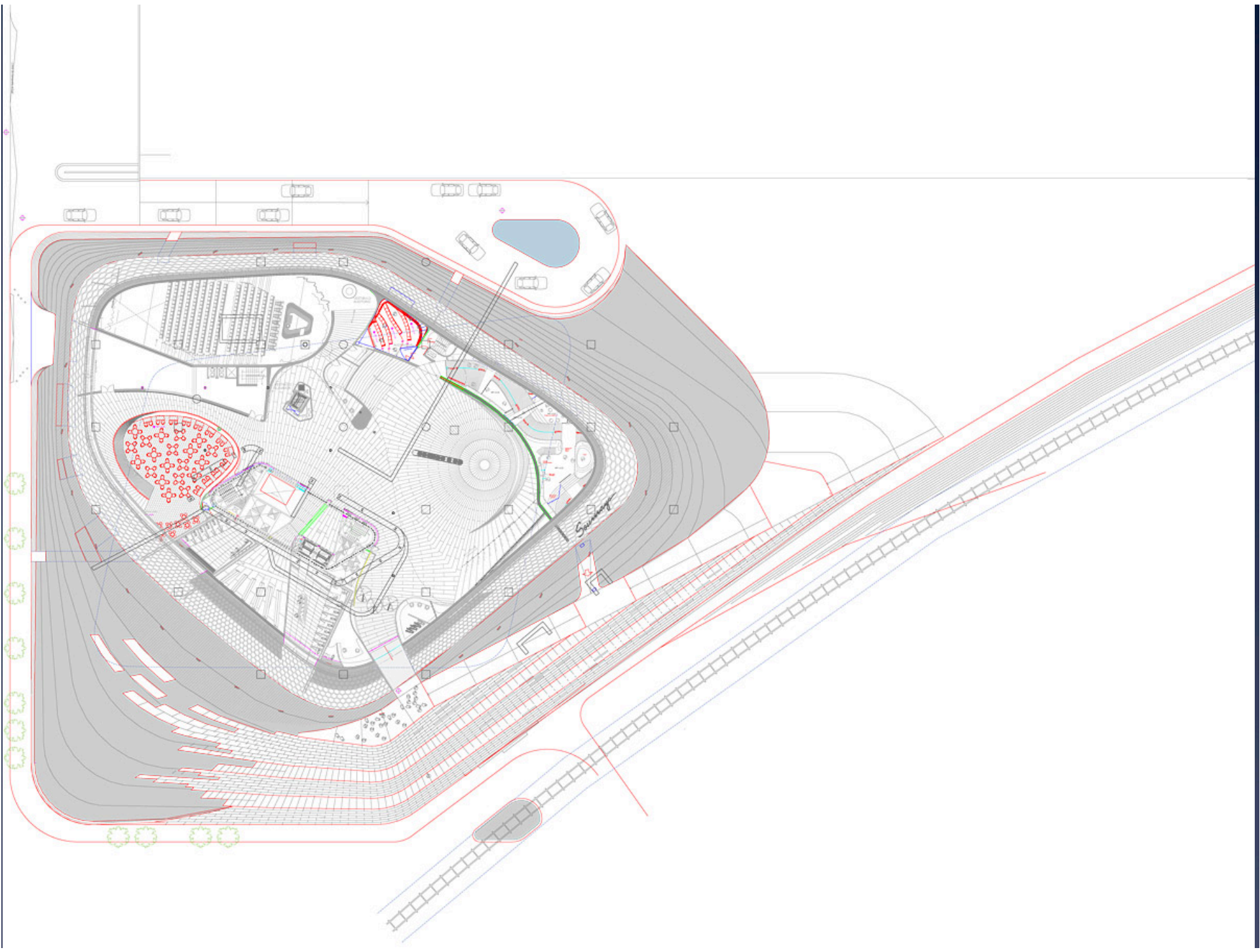
STRUCTURAL DIAGRAM

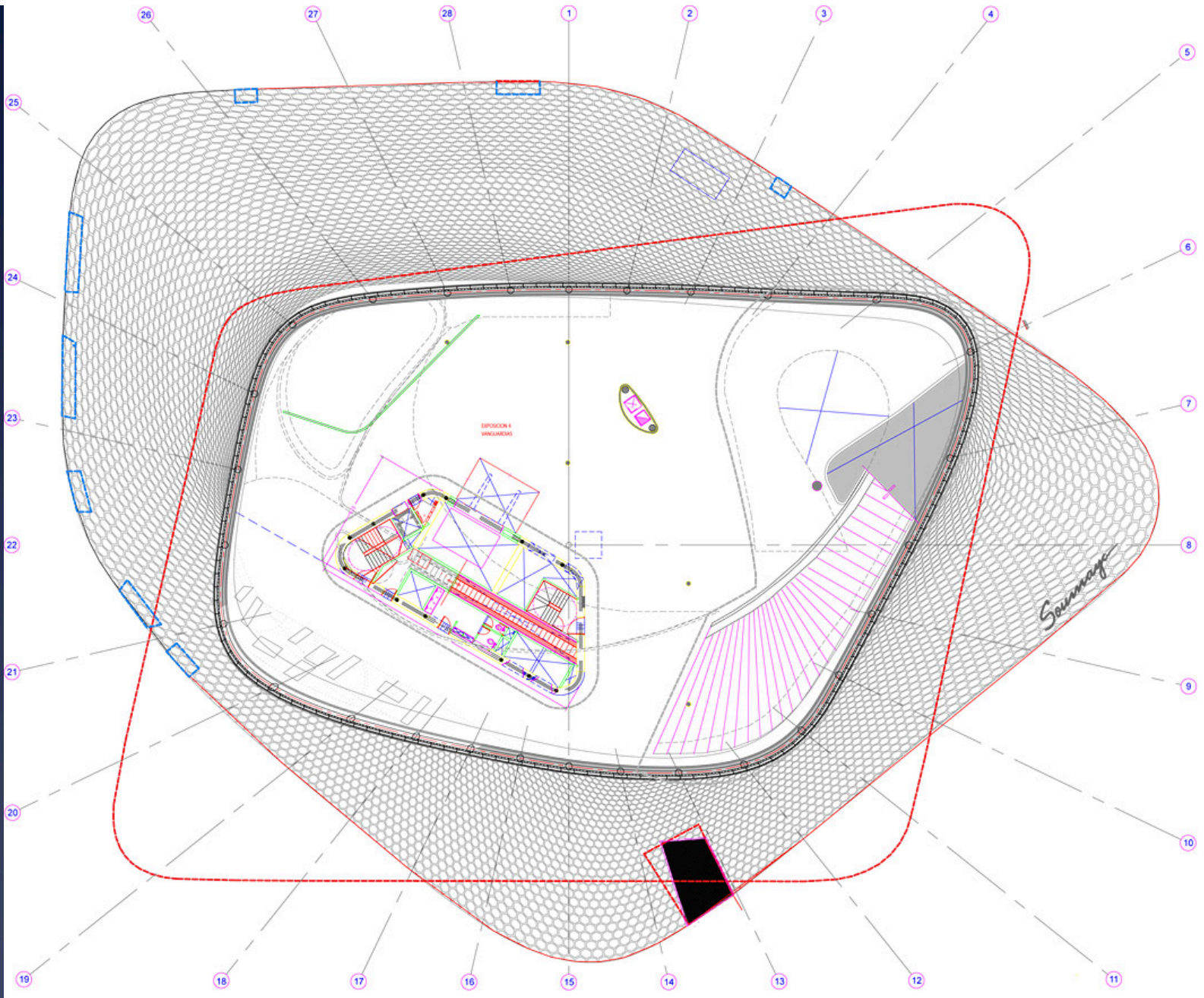


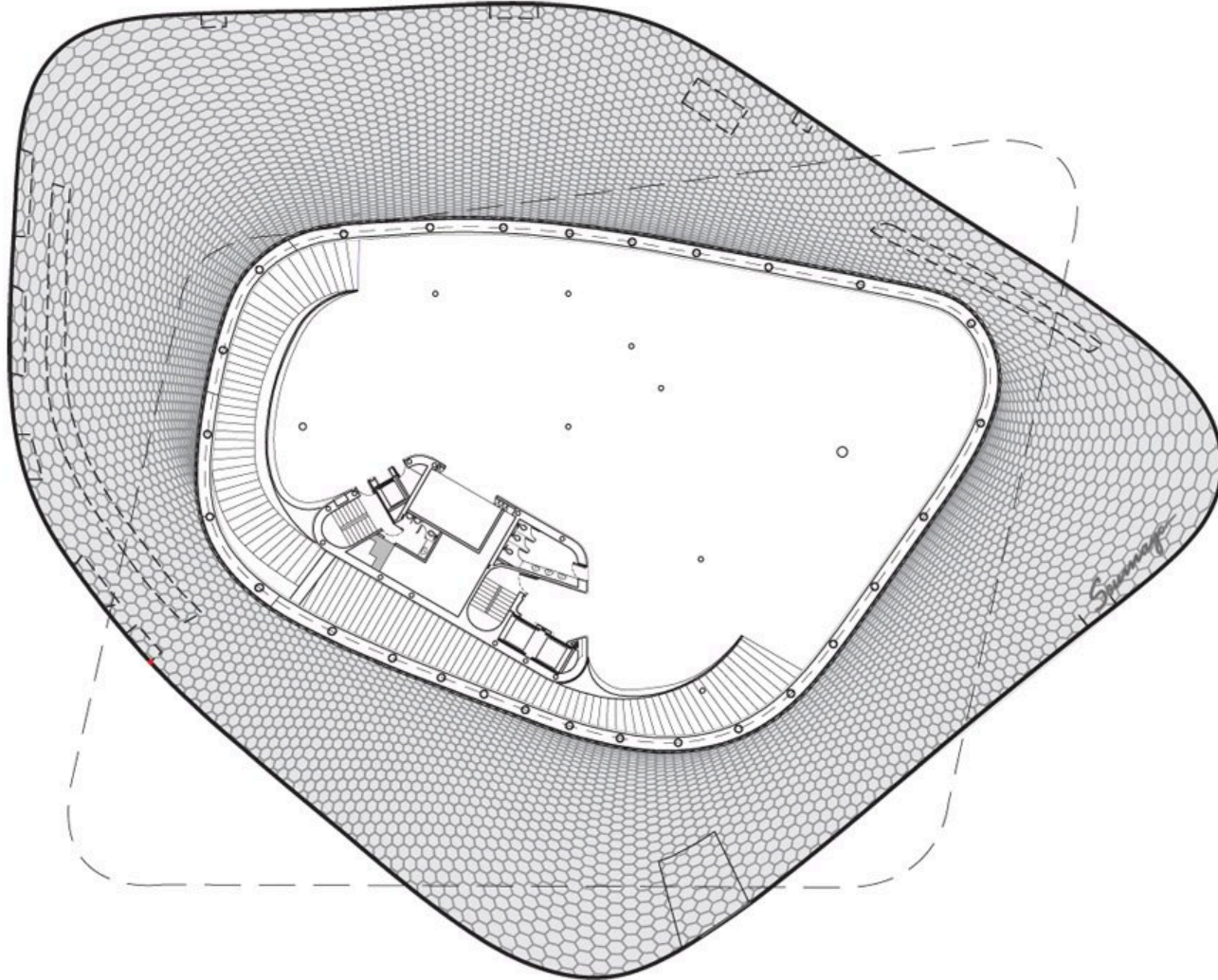
Structural Diagram

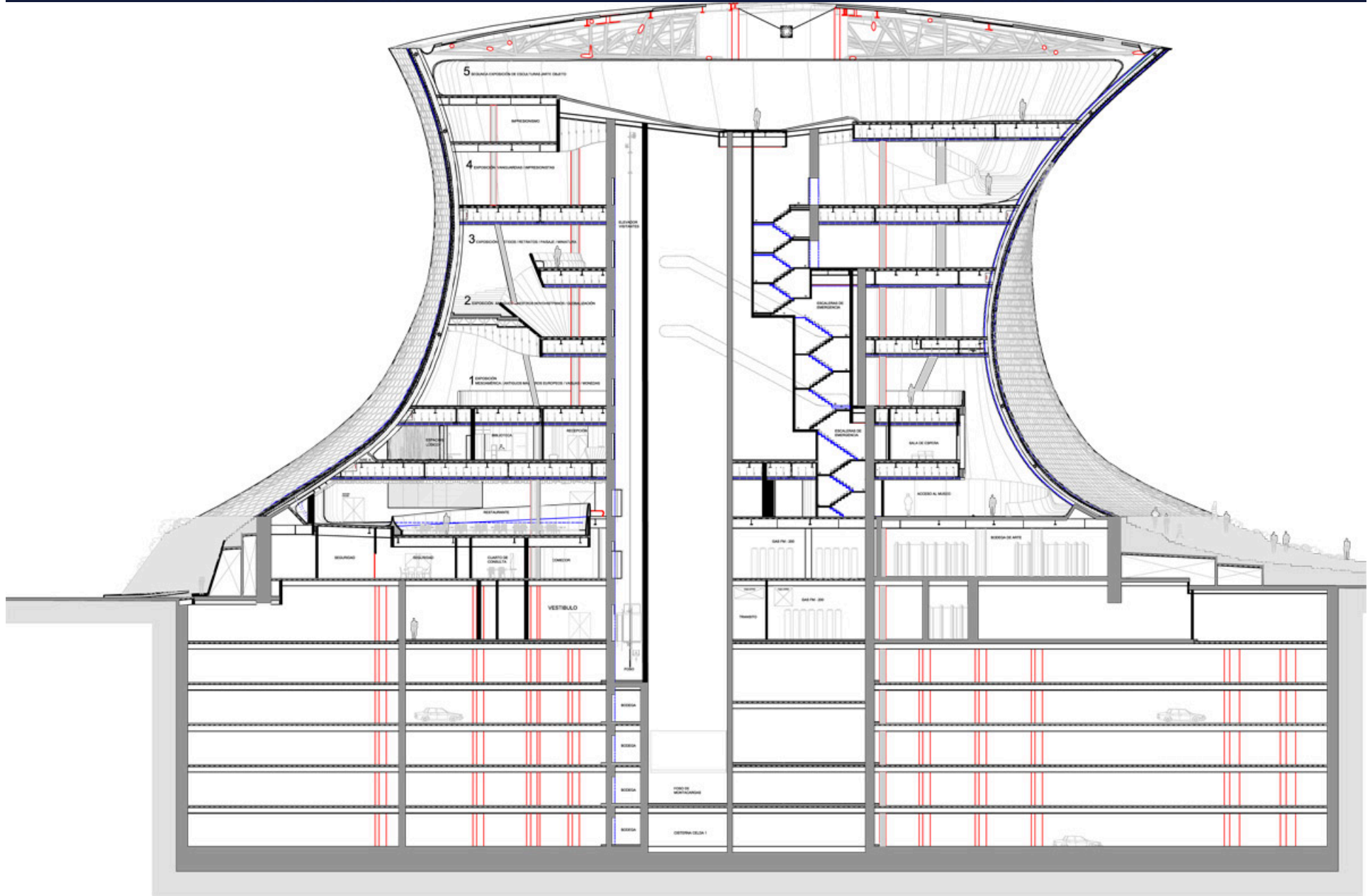


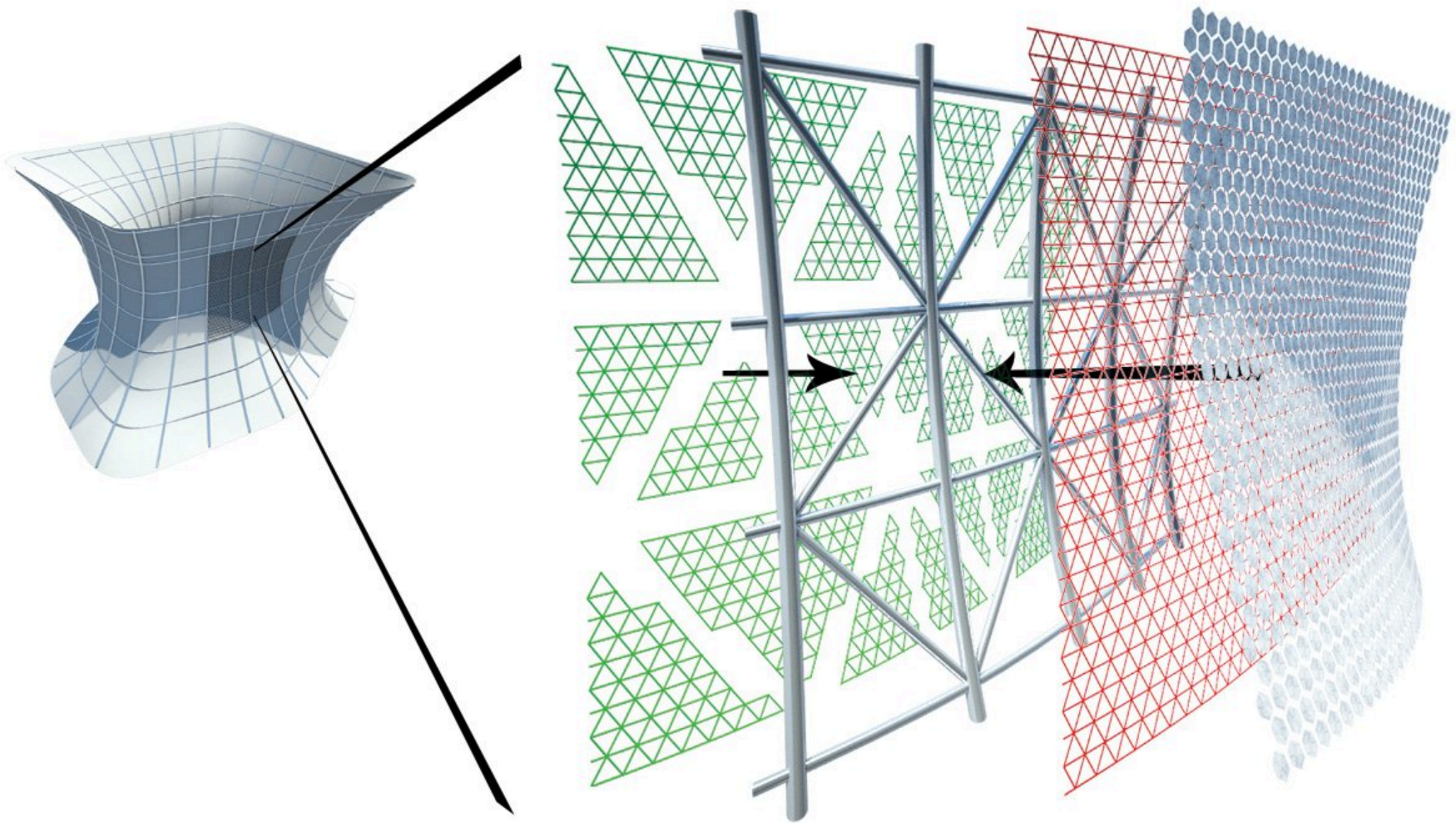




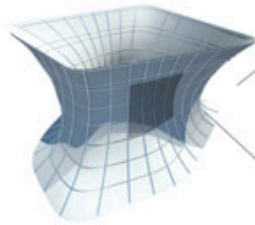
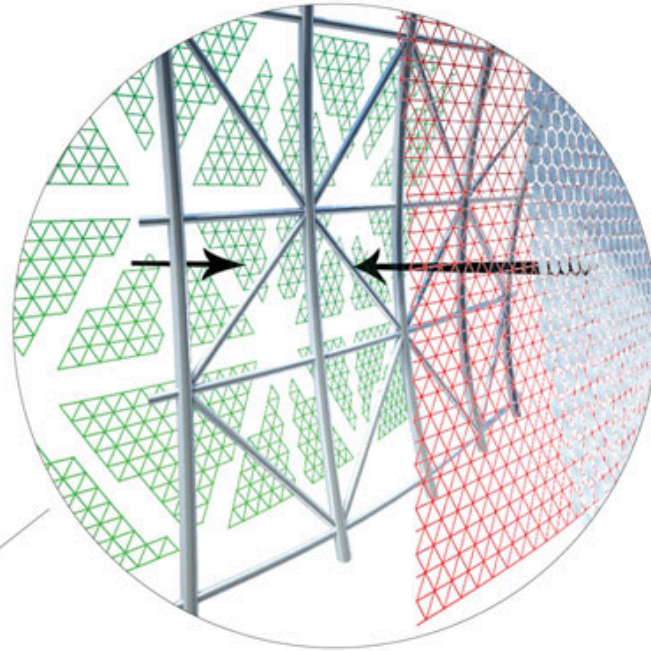








Façade diagrams



Total bracings = 100%
Eliminated bracings = 49%
Straight bracings = 51%
Curved bracings = 49%



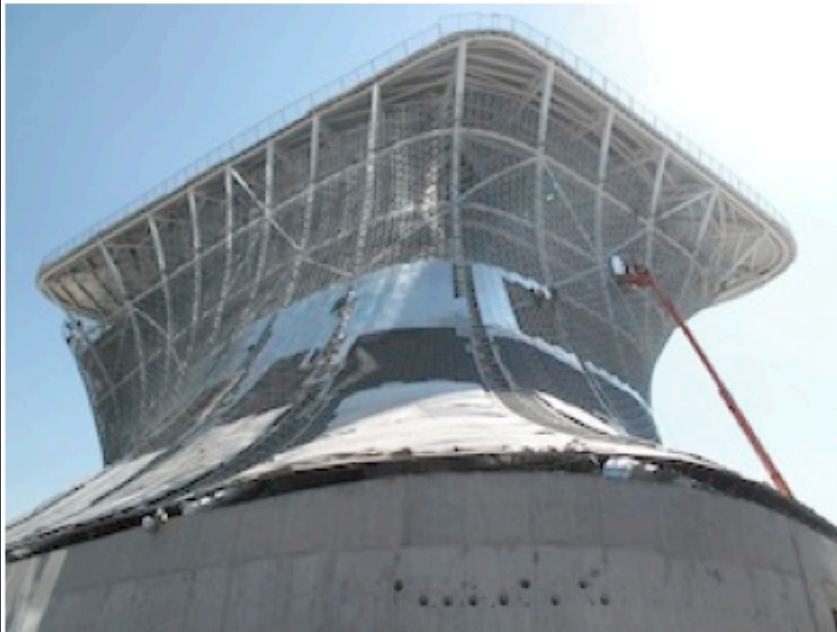




The primary structure was not completed when Geometrica's work began.



Layer after layer, Geometrica's "spiders" were hung from the main structure rather than set on the floor.



The progression of spiders was followed by the waterproofing systems and the hexagons.



The dance of the manlifts.

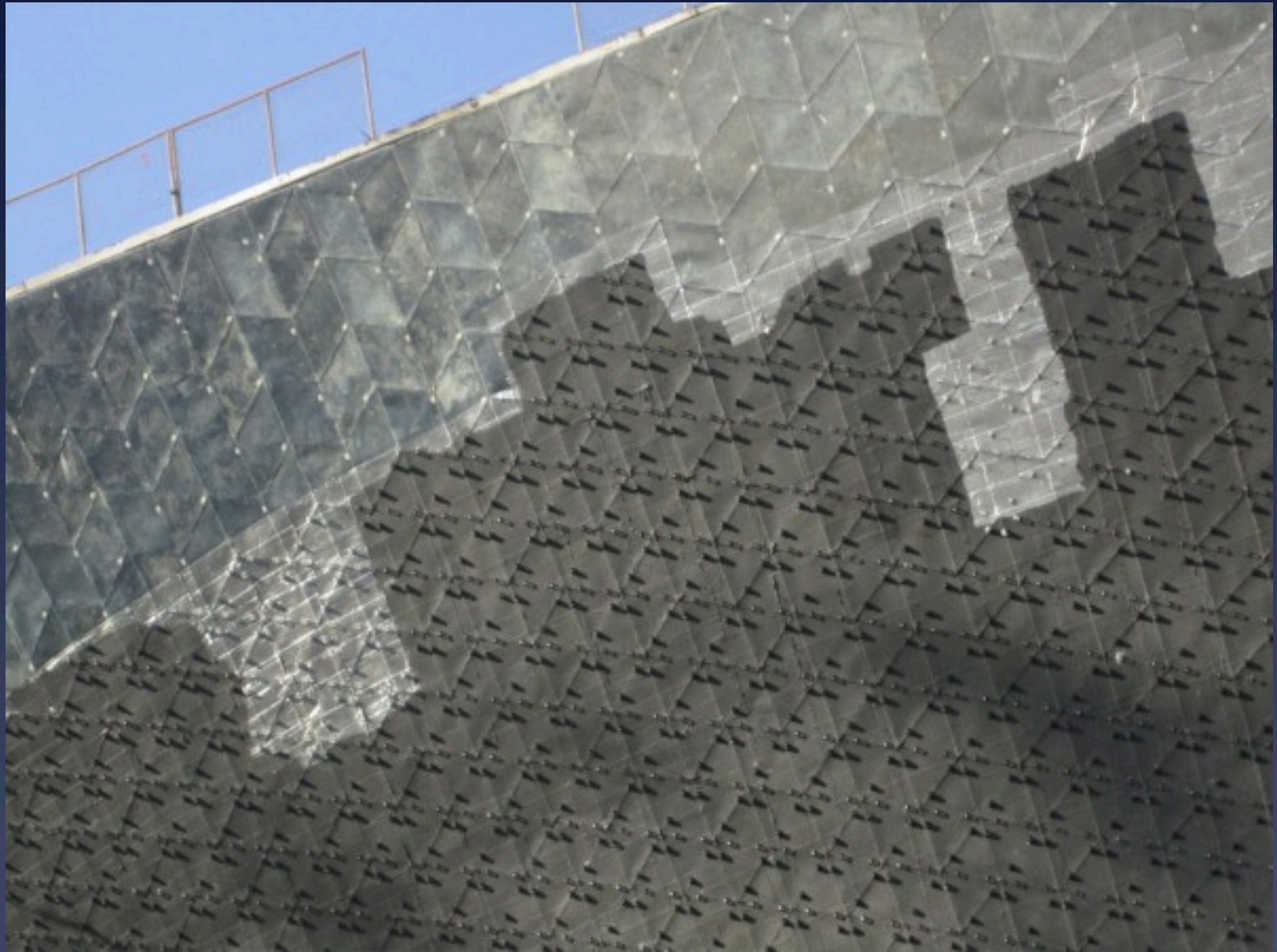




This structure is it. (Don't tell anyone).



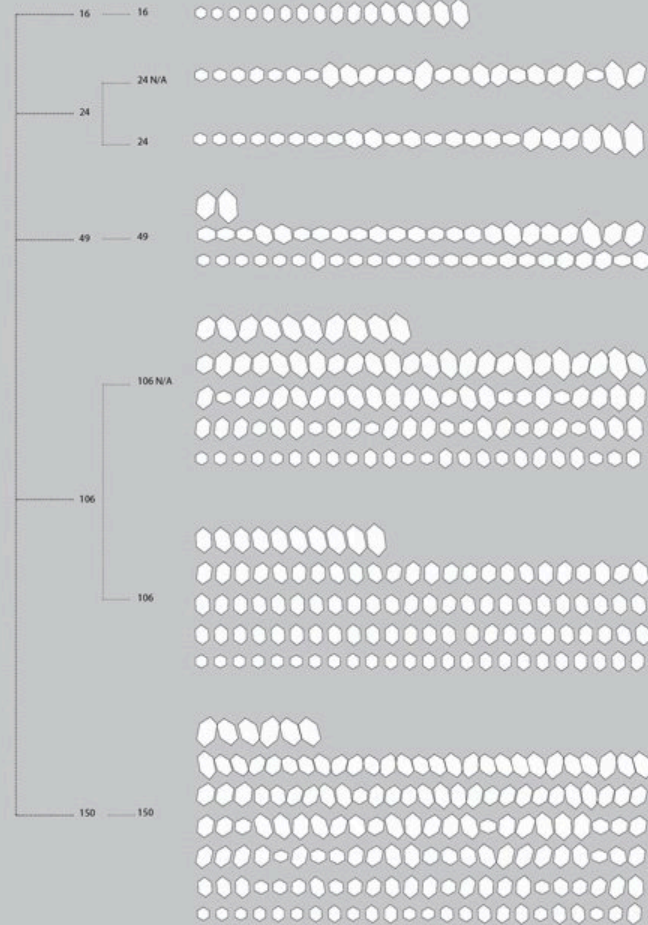
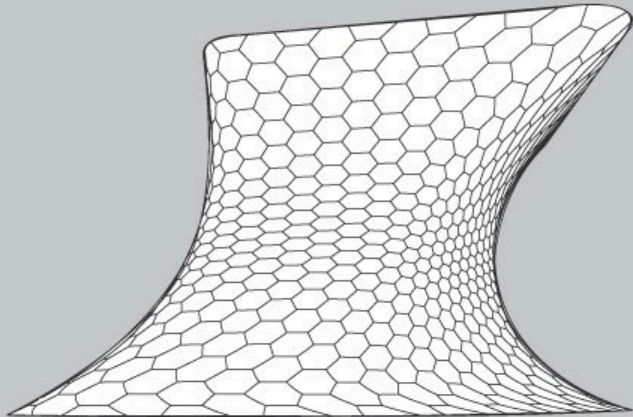






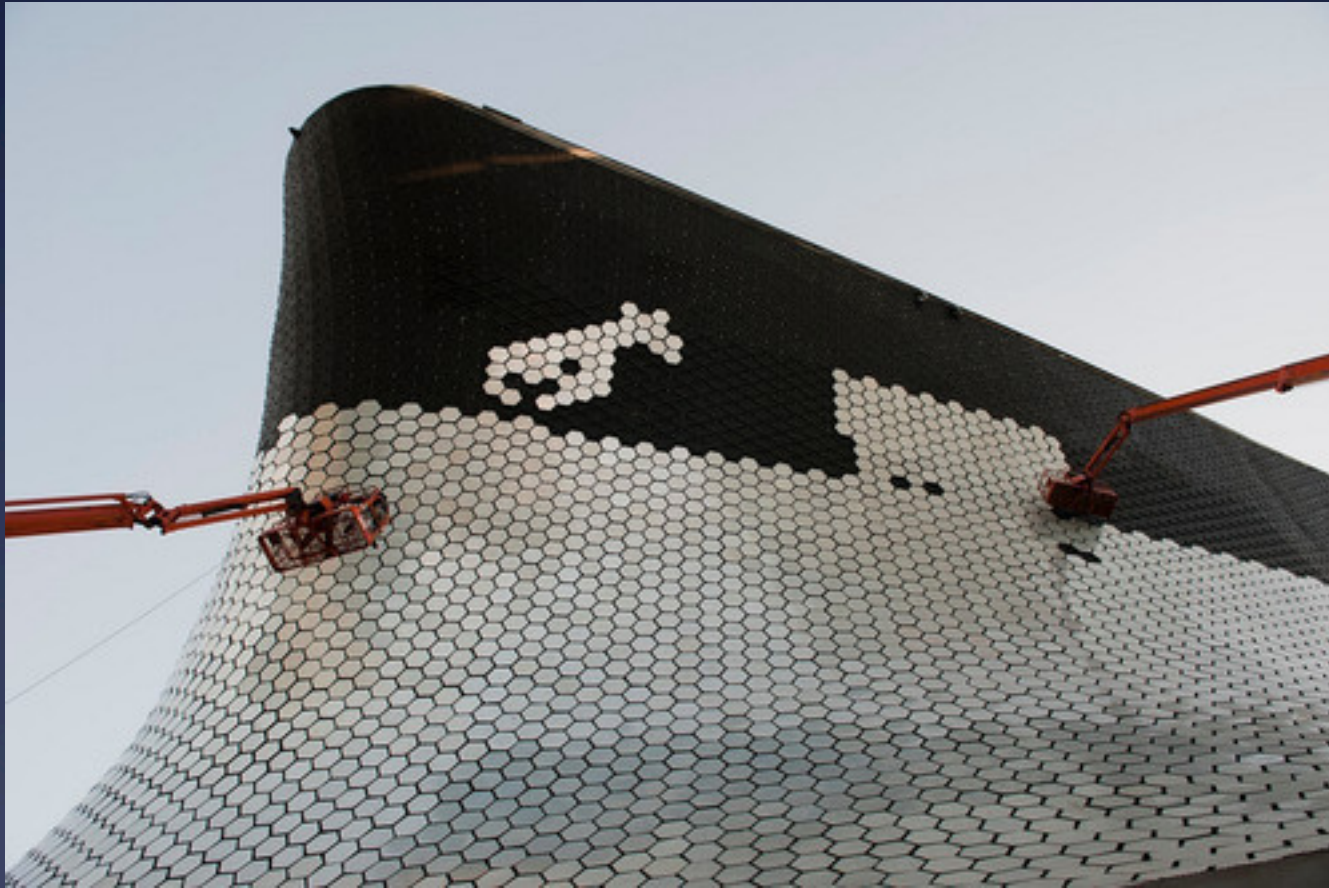
FR-EE

Hexagonal Tile Families

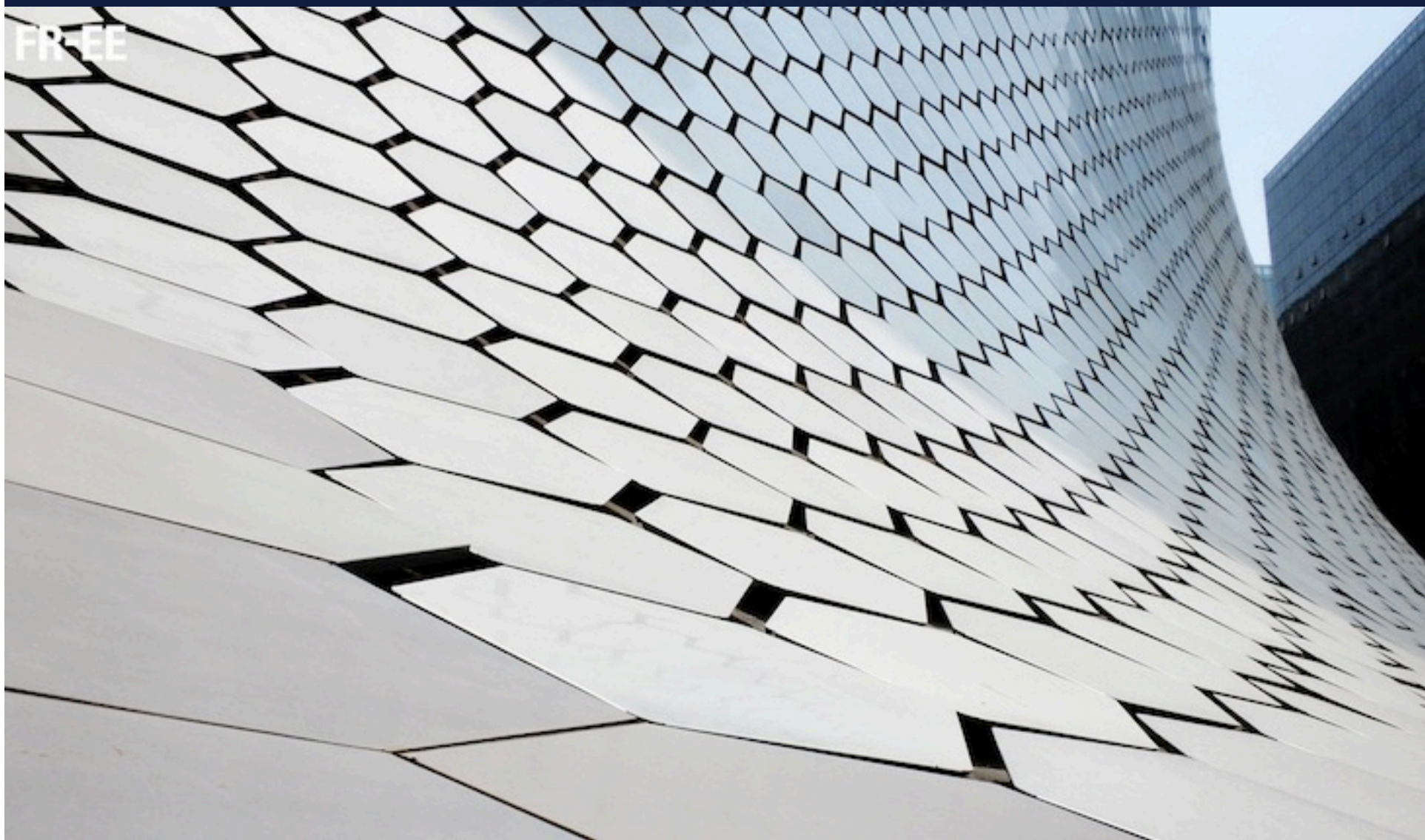


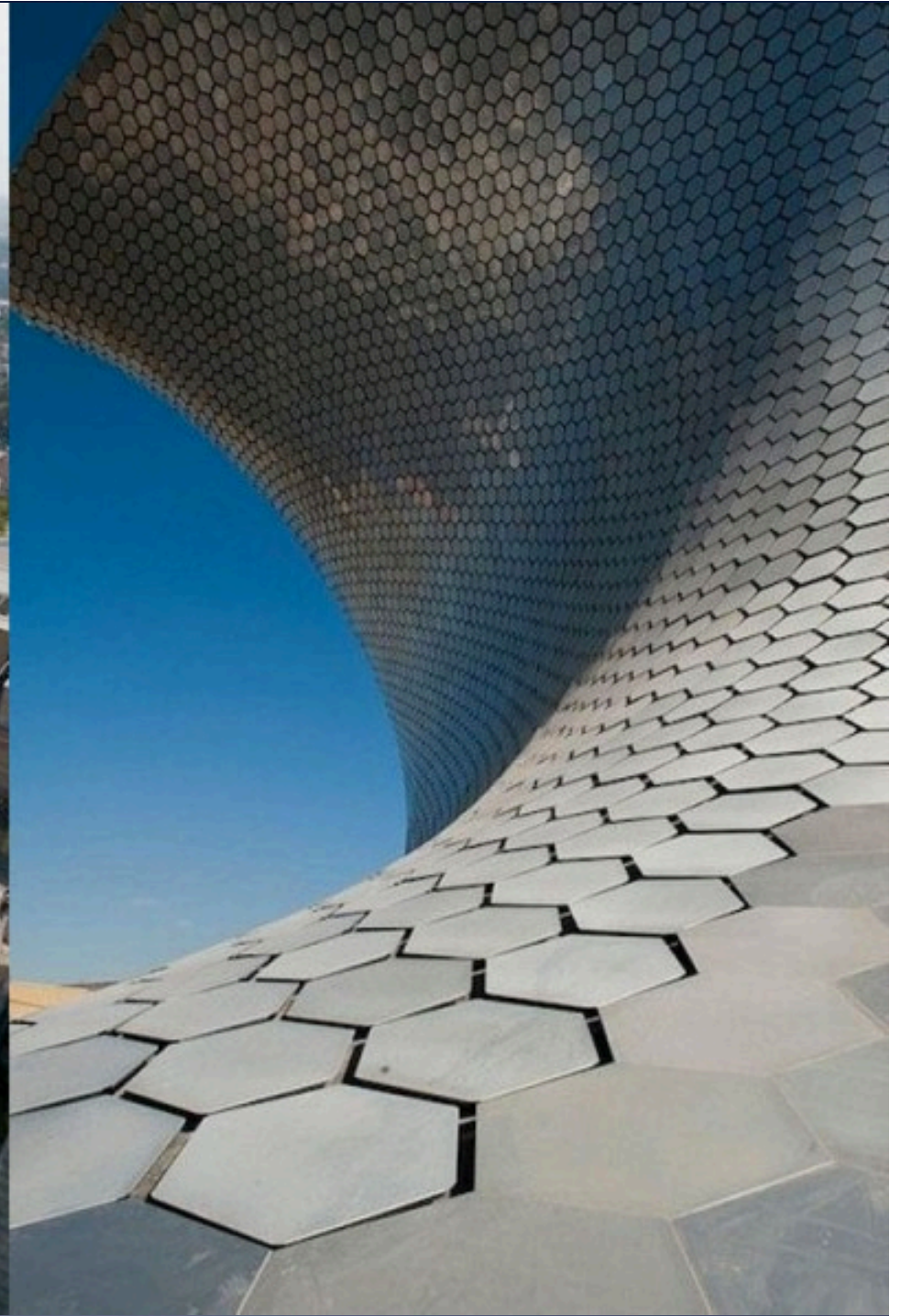


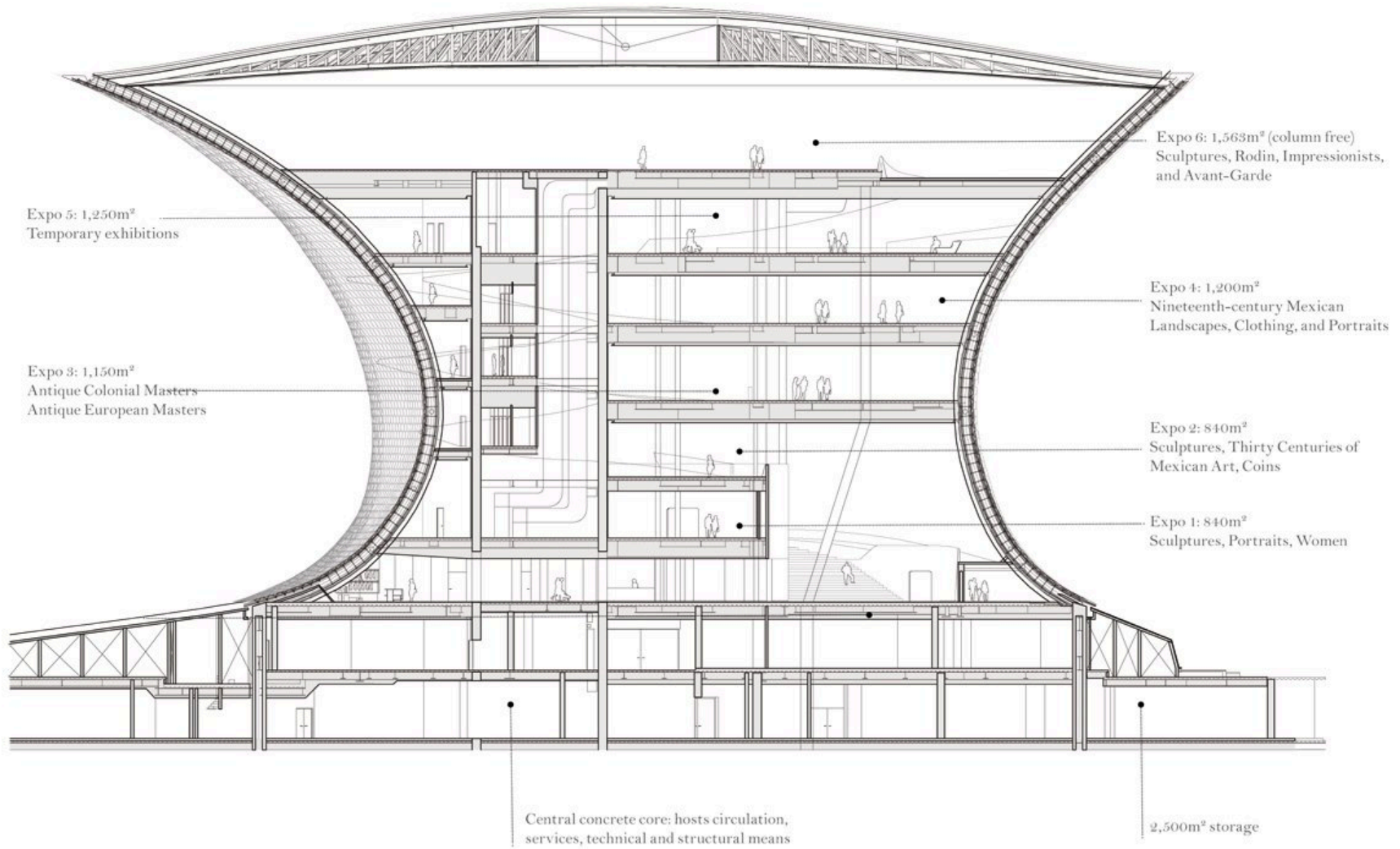


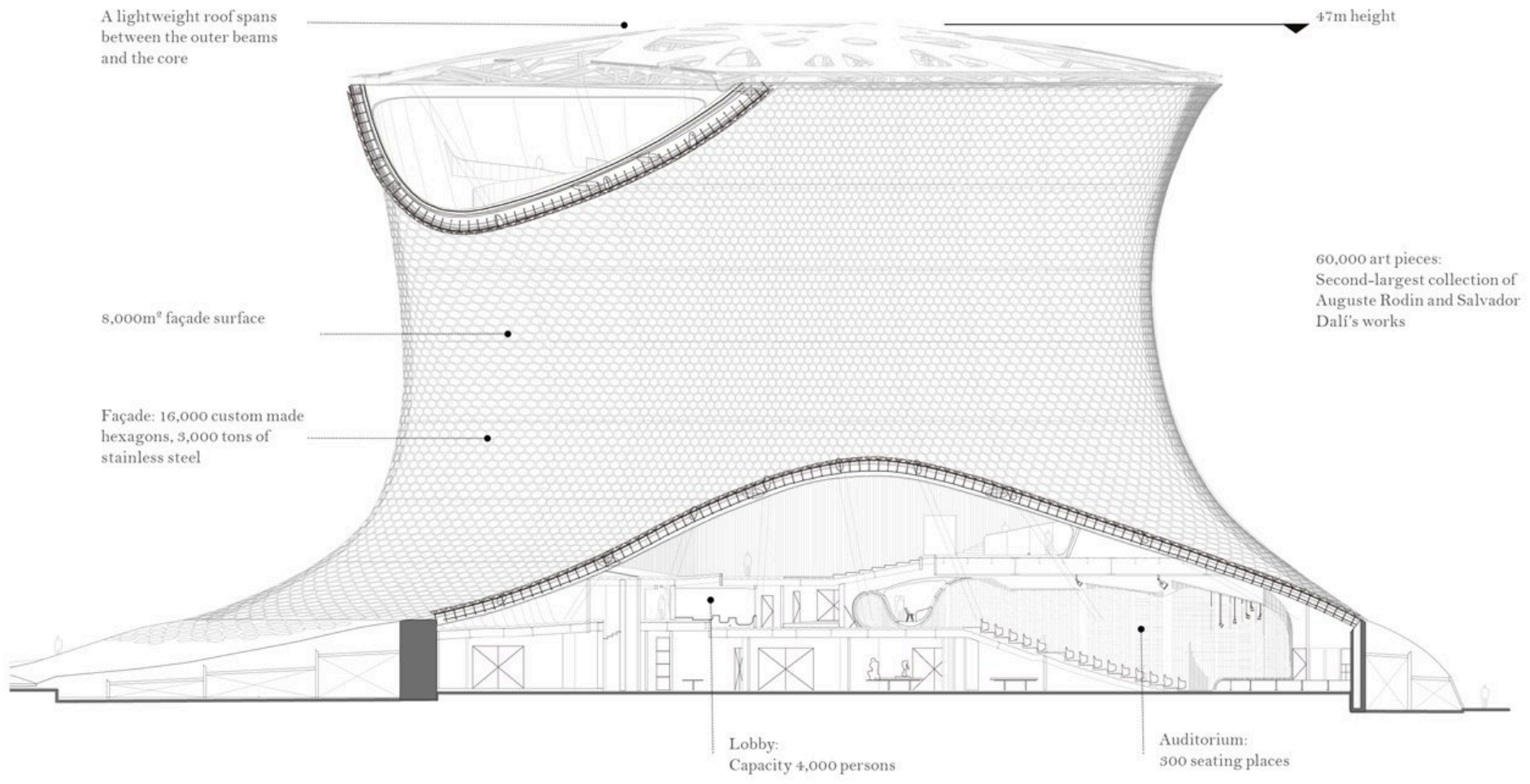


FR-EE









A lightweight roof spans between the outer beams and the core

47m height

8,000m² façade surface

Façade: 16,000 custom made hexagons, 3,000 tons of stainless steel

60,000 art pieces:
Second-largest collection of Auguste Rodin and Salvador Dalí's works

Lobby:
Capacity 4,000 persons

Auditorium:
300 seating places