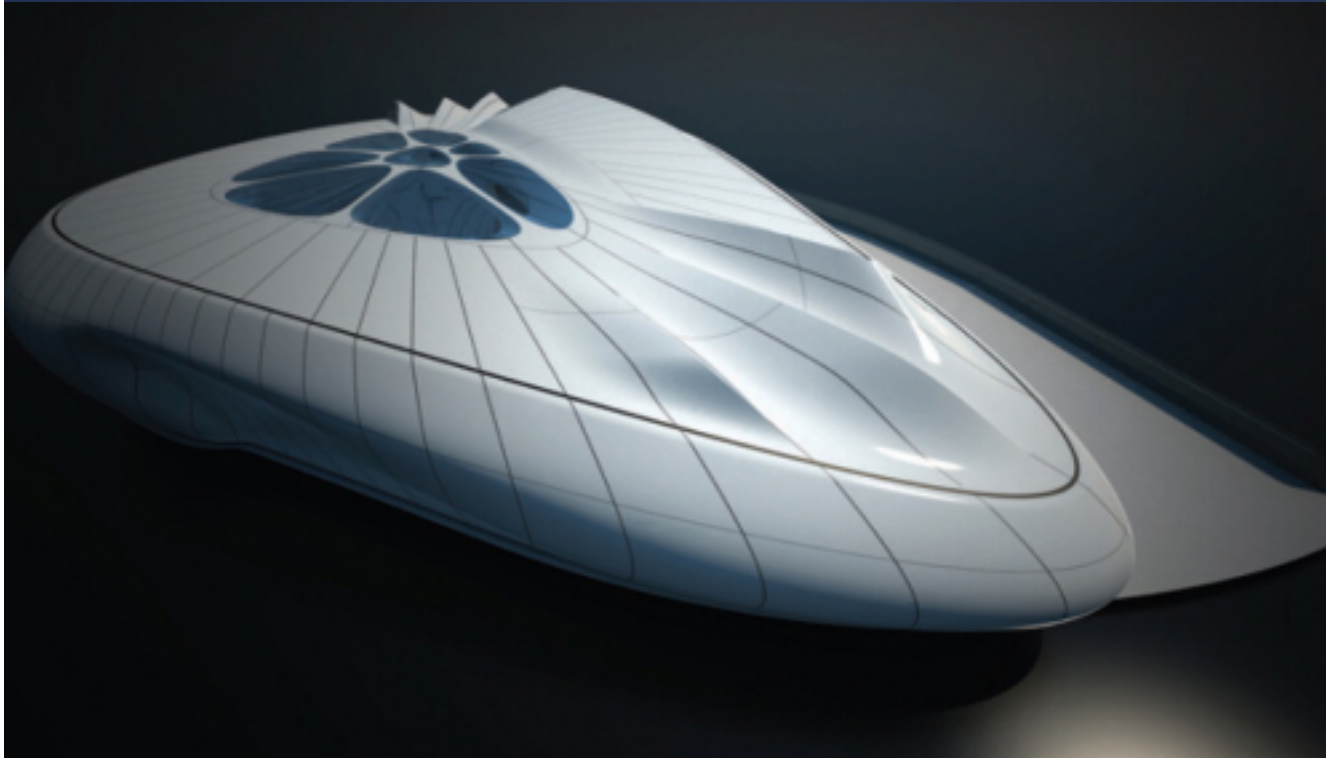


Chanel Pavilion

An FRP spaceship
by Zaha Hadid

- high quality painted finish;
- accurate geometry;
- fire performance;
- external spread of flame to BS476 Part 7 Class 2;
- internal to BS476 Part 7 Class 1 & EN 13501-1 Class C-s3-d0;
- resistance to wind, snow and live loading;
- low weight;
- robust; and
- temperature resistance >80°C.



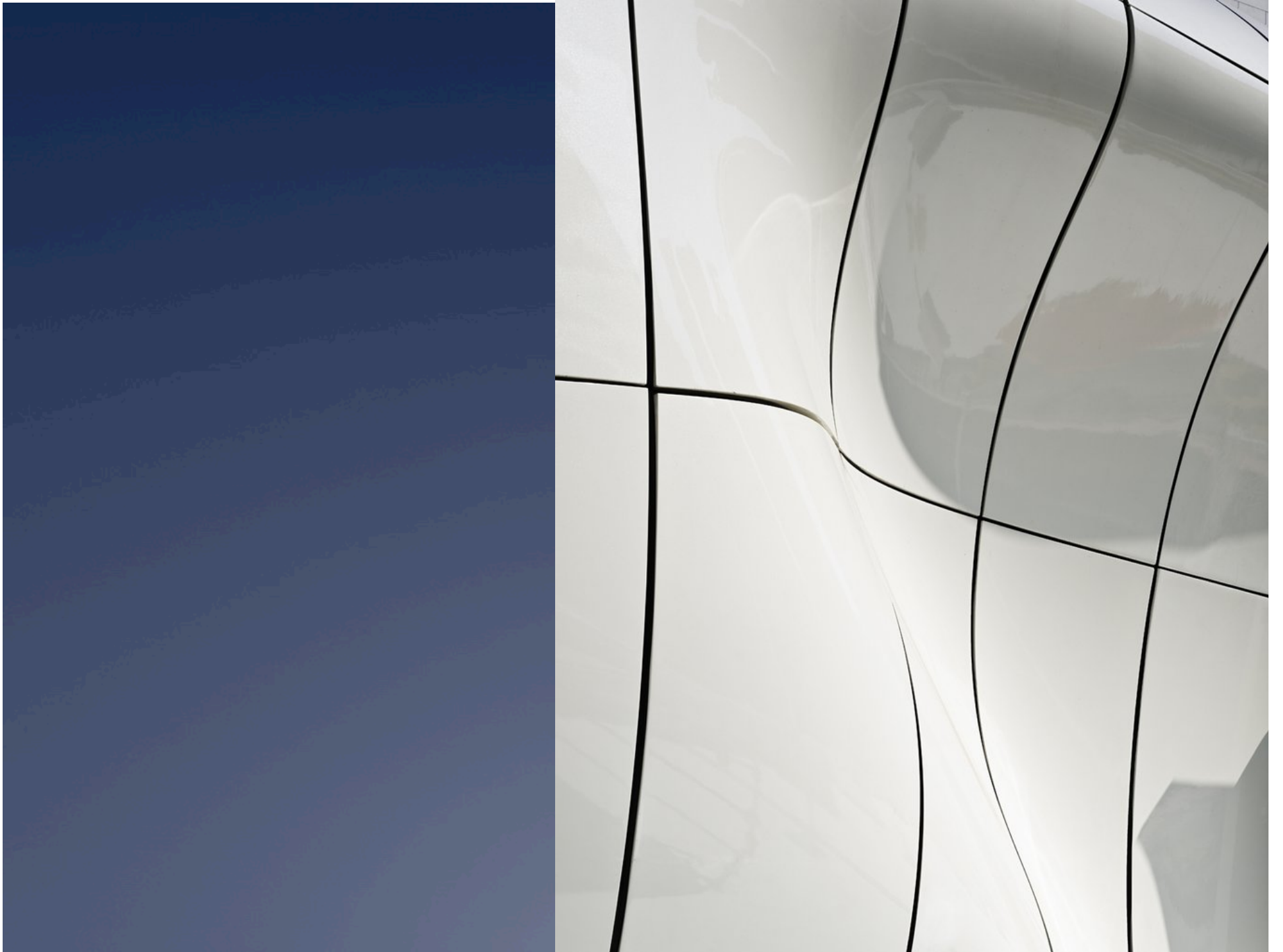


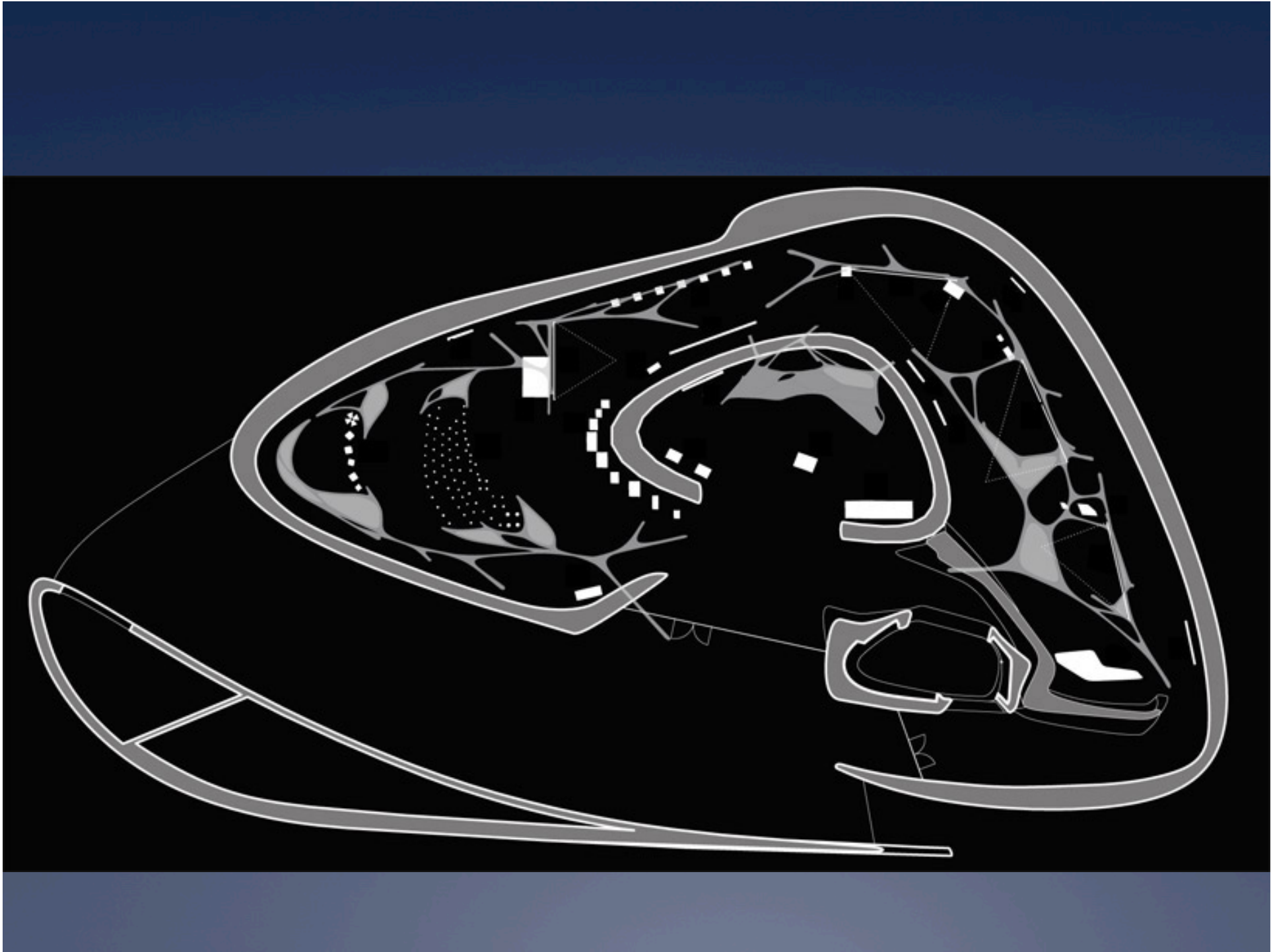
- 300 m² surface area;
- 425 separate panels;
- all panels complex 3D geometries;
- every panel was different!;
- interfaces with internal steel frame;
- largest panel 9.5 m × 1.5 m; and
- all to fit within ISO containers.

FRP (Fiber Reinforced Plastic) from cars and boats to a traveling pavilion...that ships in containers











high quality painted finish;
accurate geometry;
fire performance;
external spread of flame to BS476 Part 7 Class 2;
internal to BS476 Part 7 Class 1 & EN 13501-1 Class C-s3-d0;
resistance to wind, snow and live loading;
low weight;
robust; and
temperature resistance >80°C.

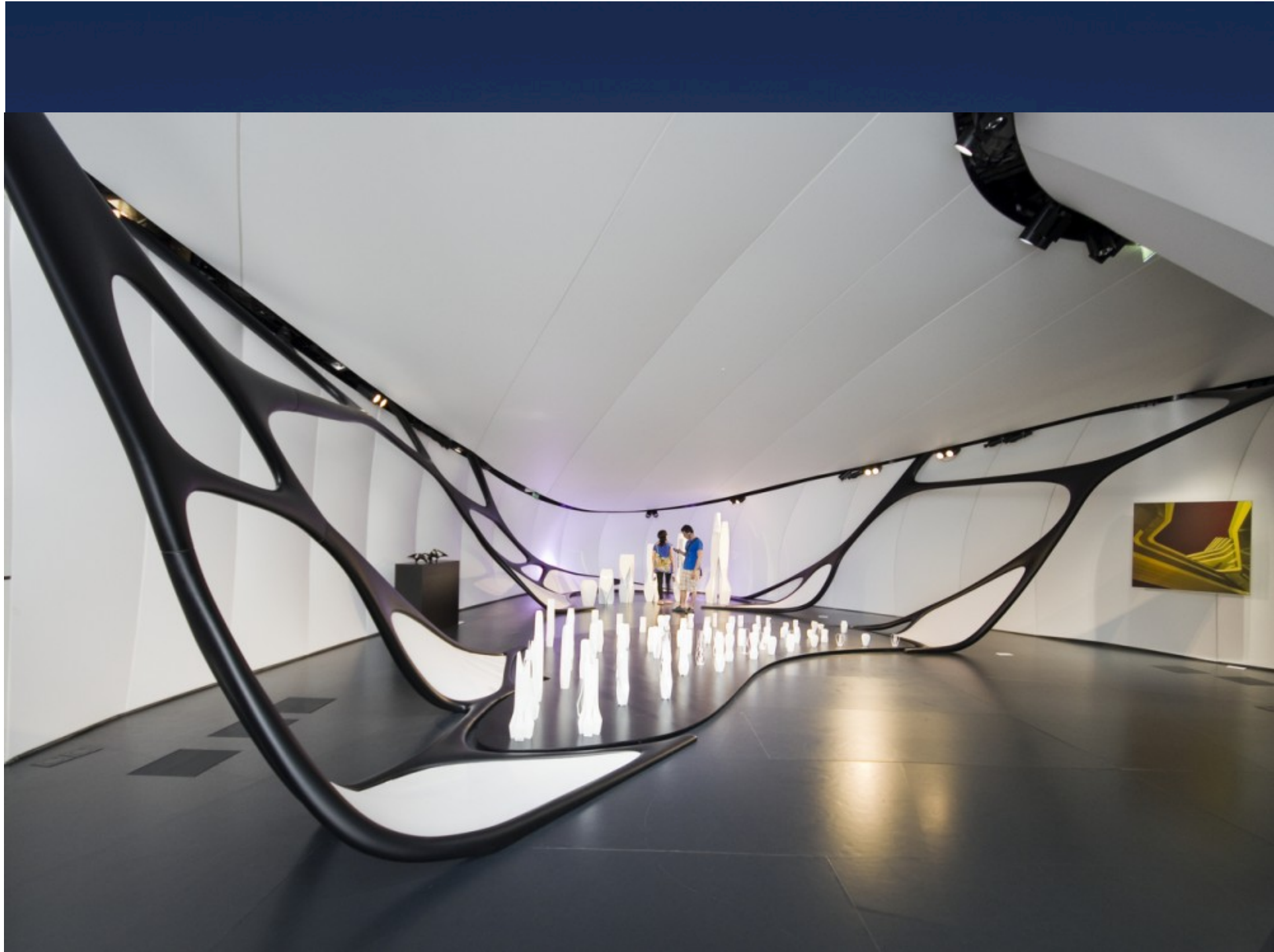




EFTE bubbles























... permanently at home with
Jean Nouvel



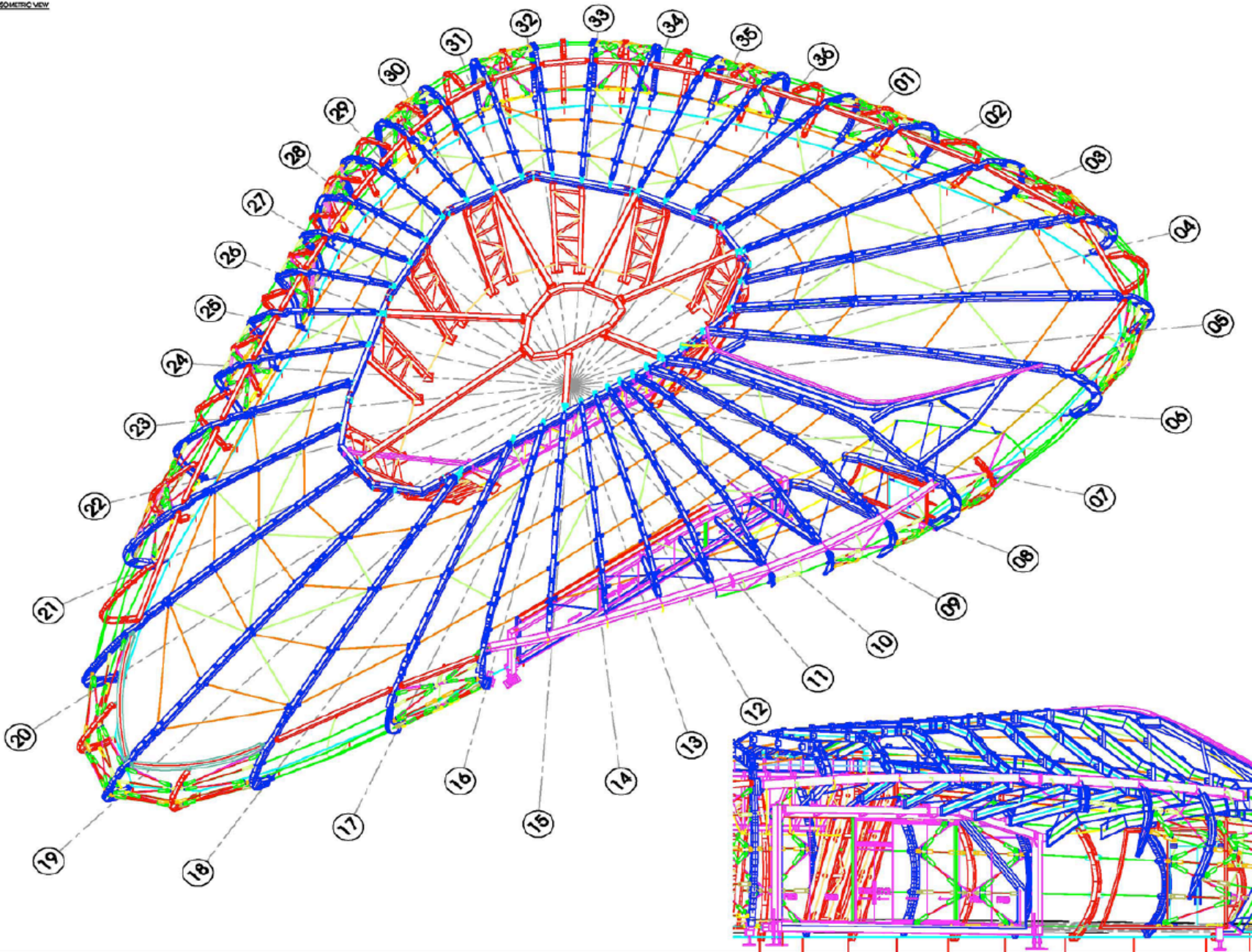




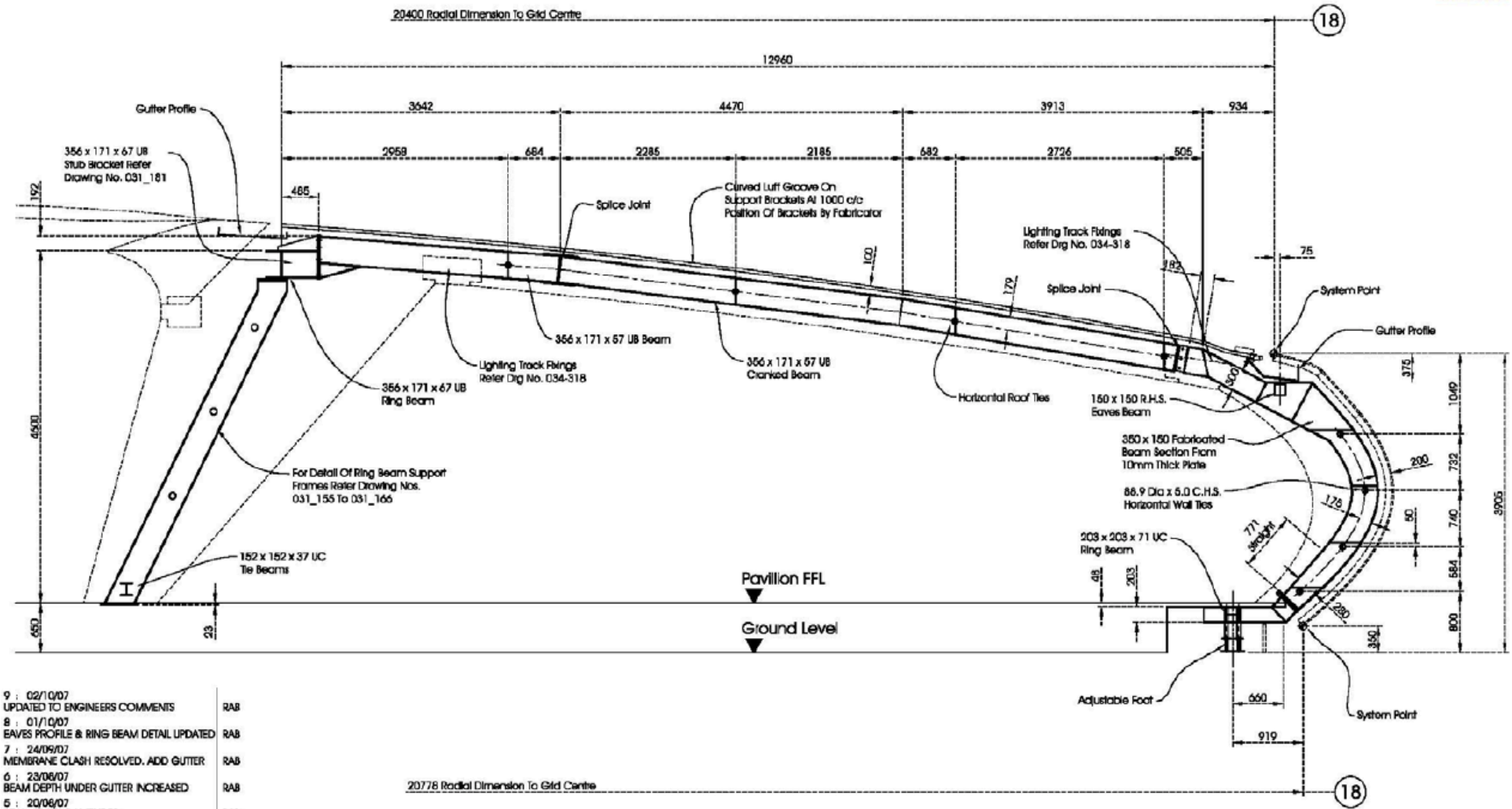




ISOMETRIC VIEW



PROJECT DATA	
PROJECT NAME	CHANEL TOLLING PAVILION
CLIENT	CHANEL
ARCHITECT	ARCHITECT
DATE	12/11/07
SCALE	1:50
DESIGNER	ES
CHECKER	ES
DATE	12/11/07
FILE NAME	001_CO1_STEEL_ISOMETRIC.DWG
DESCRIPTION	PRELIMINARY
SCALE	1:50
DATE	12/11/07
FILE NAME	001_CO1



- 9 : 02/10/07
 UPDATED TO ENGINEERS COMMENTS RAB
 - 8 : 01/10/07
 EAVES PROFILE & RING BEAM DETAIL UPDATED RAB
 - 7 : 24/09/07
 MEMBRANE CLASH RESOLVED, ADD GUTTER RAB
 - 6 : 23/08/07
 BEAM DEPTH UNDER GUTTER INCREASED RAB
 - 5 : 20/06/07
 BEAM PROFILE AMENDED RAB
 - 4 : 15/06/07
 HORIZONTAL TIE LOCATIONS ADDED RAB
 - 3 : 26/07/07
 FLOOR LEVEL REVISED - RING BEAM ADDED RAB
 - 2 : 13/07/07
 RING BEAM DEFINED RAB
- Revised by
- File Name
031_118_RADIAL-FRAME 18.DWG

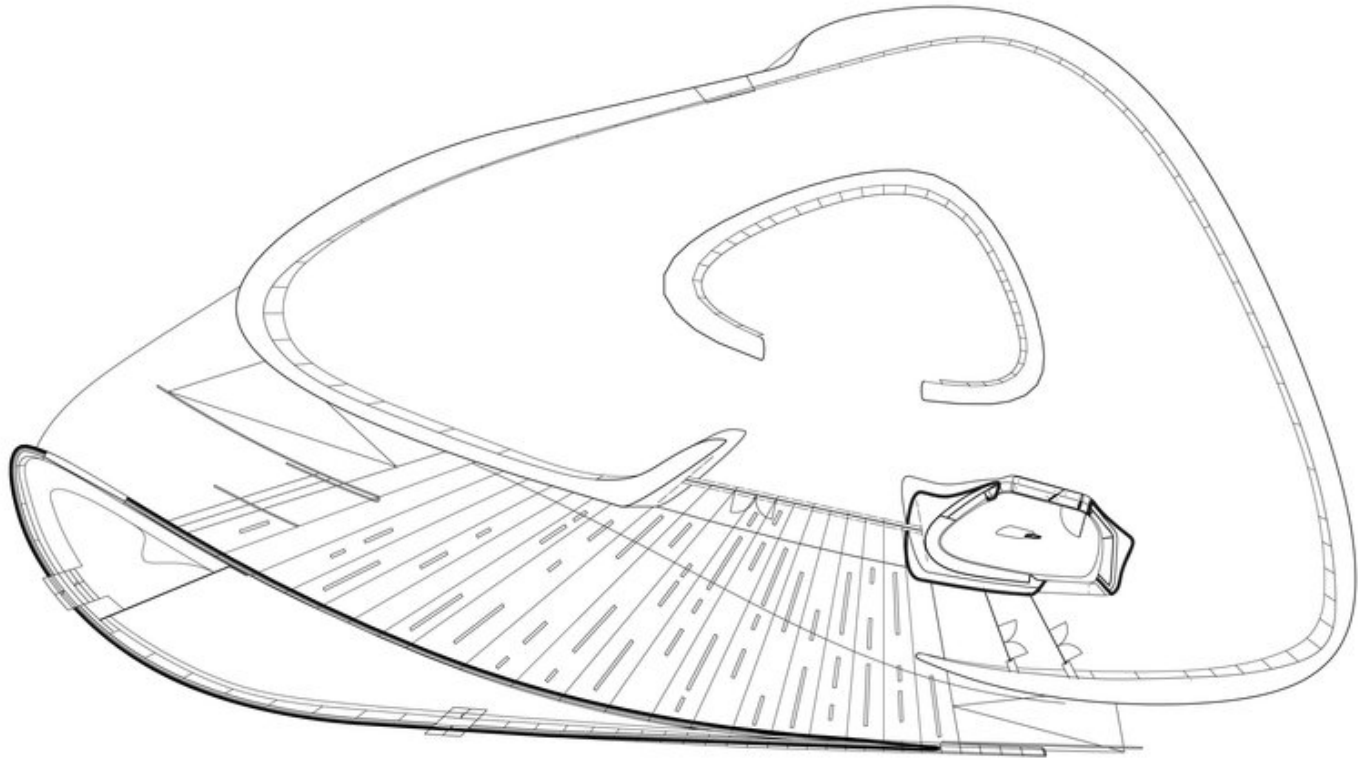
Important Note
 1/ This drawing is copyright and the property of ESL Ltd. It must NOT be copied or used in part or whole, without their written consent. Failure to do so may lead to legal proceedings under the Copyright, Designs and Patents Act 1988.
 2/ The information shown on this drawing is based upon information supplied to ESL Ltd by the client. It is the responsibility of the client to:
 (i) check that their requirements have been correctly interpreted.
 (ii) confirm the receipt and the validity of the drawing contents in writing to the issuing office ESL Ltd.
 3/ Any modification to the details shown on the drawing MUST be agreed to ESL Ltd for their information and approval.

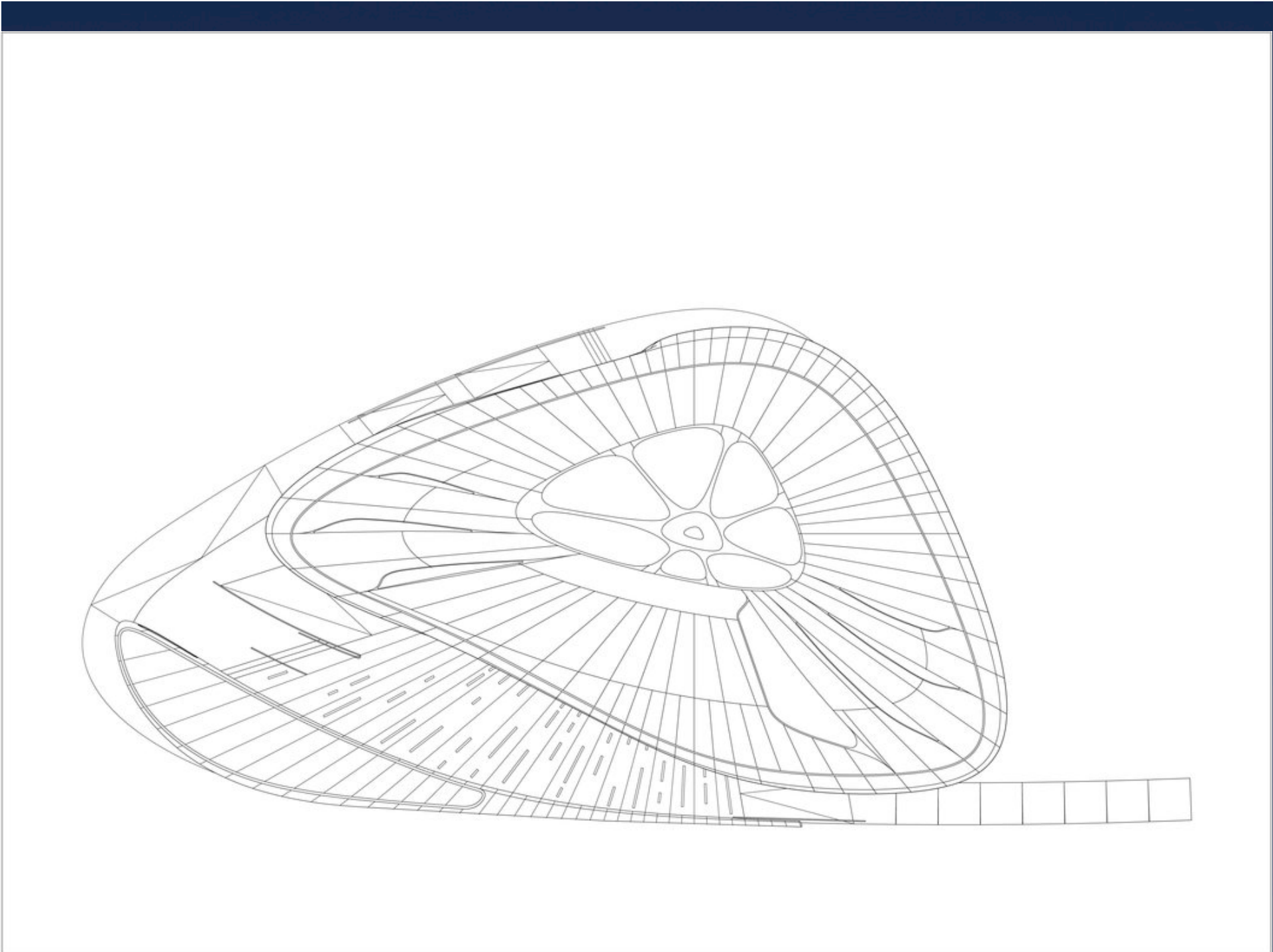
Drawing Details		Scale	Size	Drawn	Checked
Date	30/06/07	1:50	A3	RAB	
Issue Details	Date	Created			

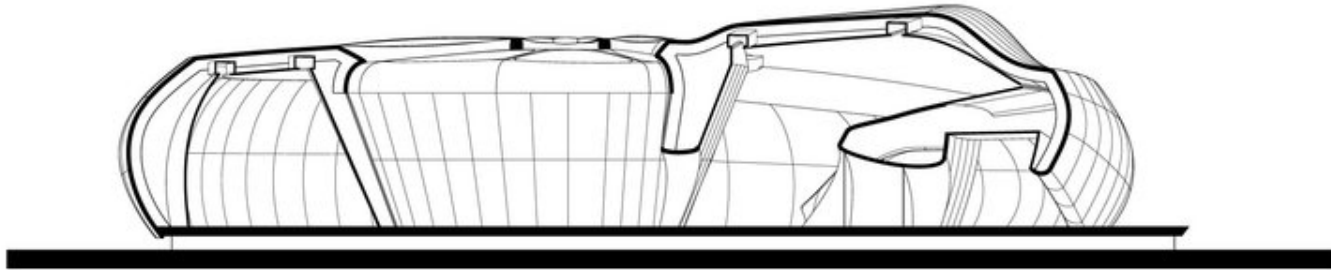
Project	Project No.
CHANEL TOURING PAVILION	3664
Title	
GENERAL ARRANGEMENT FRAME ELEVATION RADIAL 18	

Issue Status	PRELIMINARY
NOT TO BE USED FOR CONSTRUCTION	
Drawing Number	Date
031_118	9

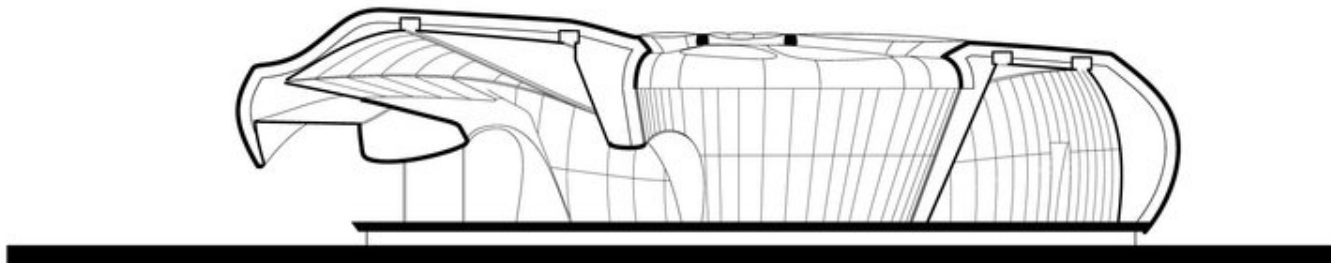
FRAME ELEVATION RADIAL 18



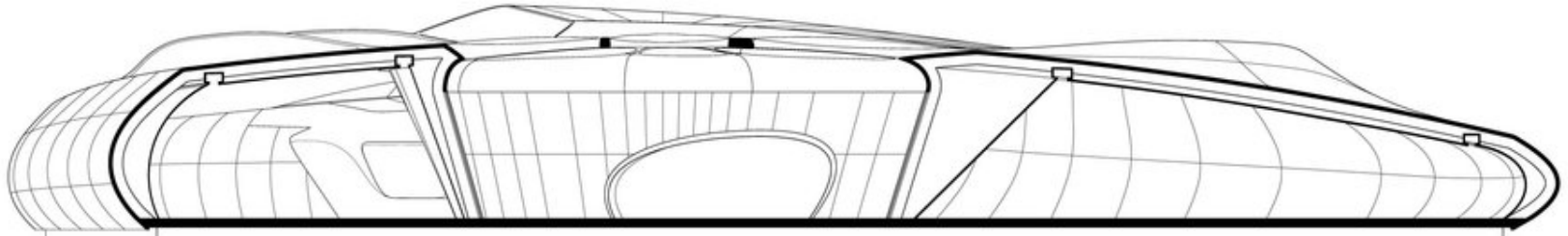
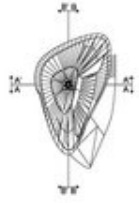




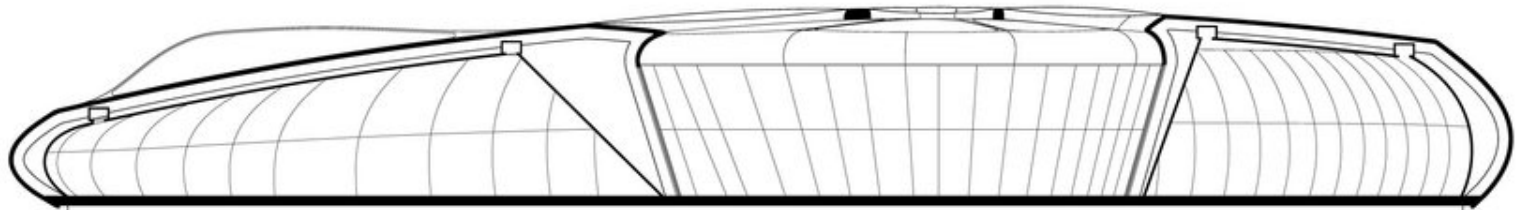
SECTION A-A
SCALE 1:50



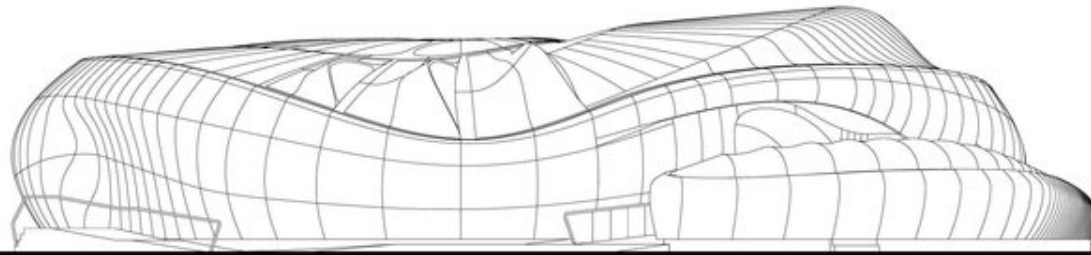
SECTION A-A'
SCALE 1:50



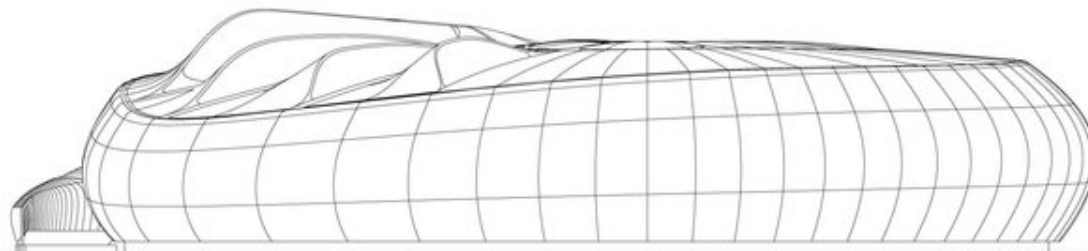
SECTION B-B SCALE 1:50



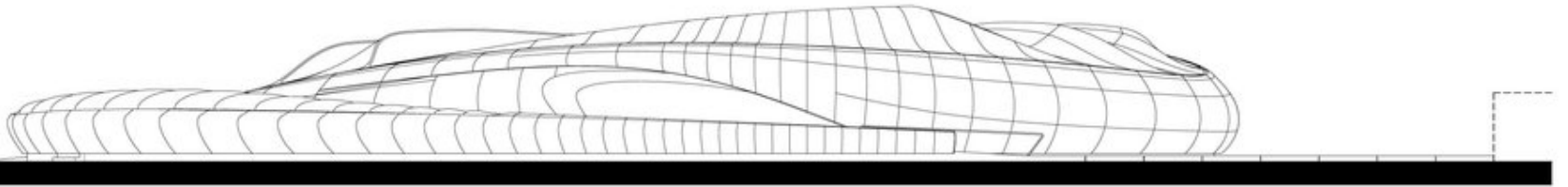
SECTION B-B SCALE 1:50



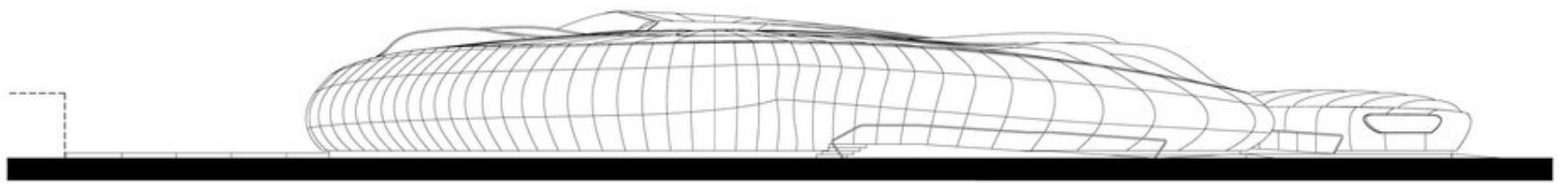
FRONT ELEVATION SCALE 1:50



BACK ELEVATION SCALE 1:50



RIGHT ELEVATION SCALE 1:75



LEFT ELEVATION SCALE 1:75

