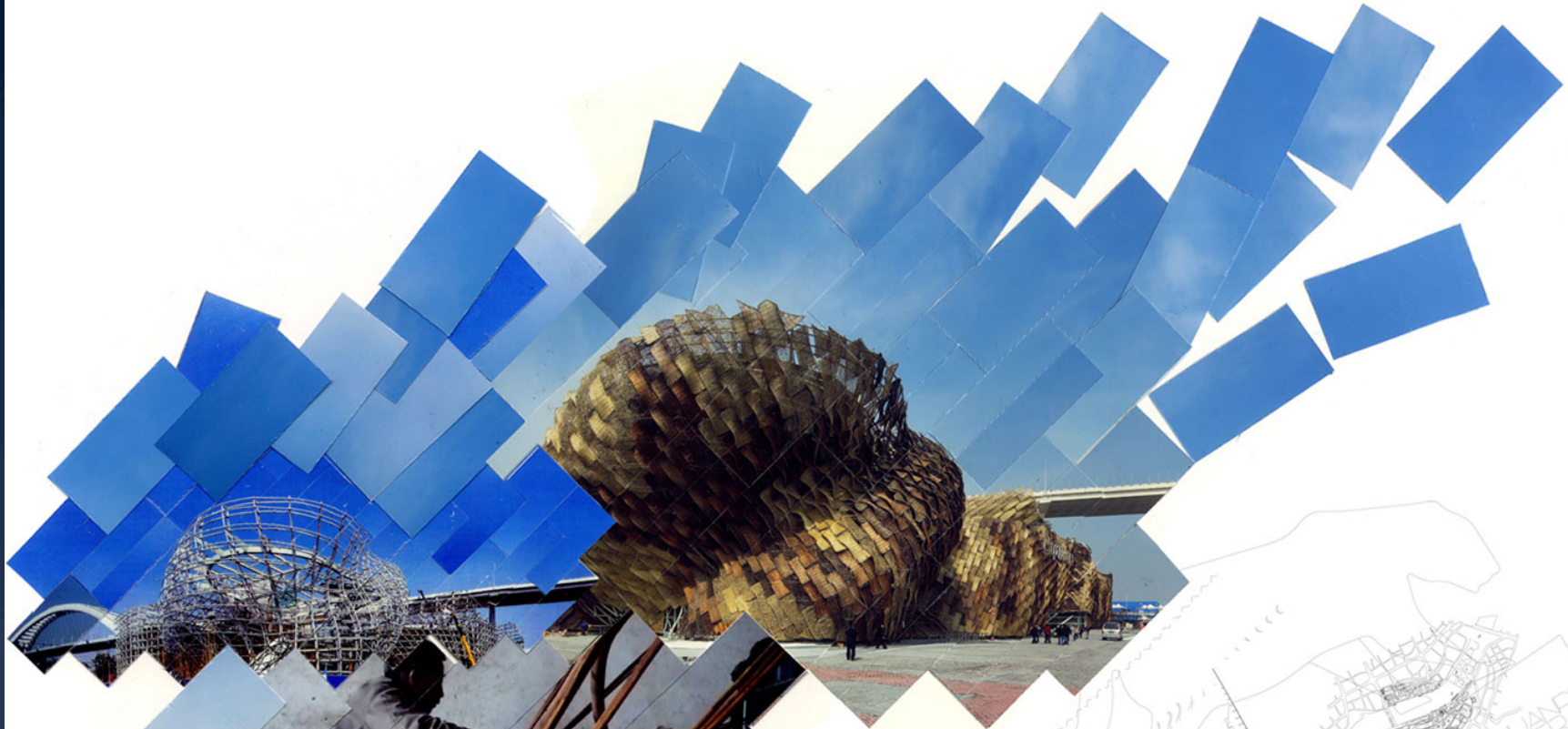


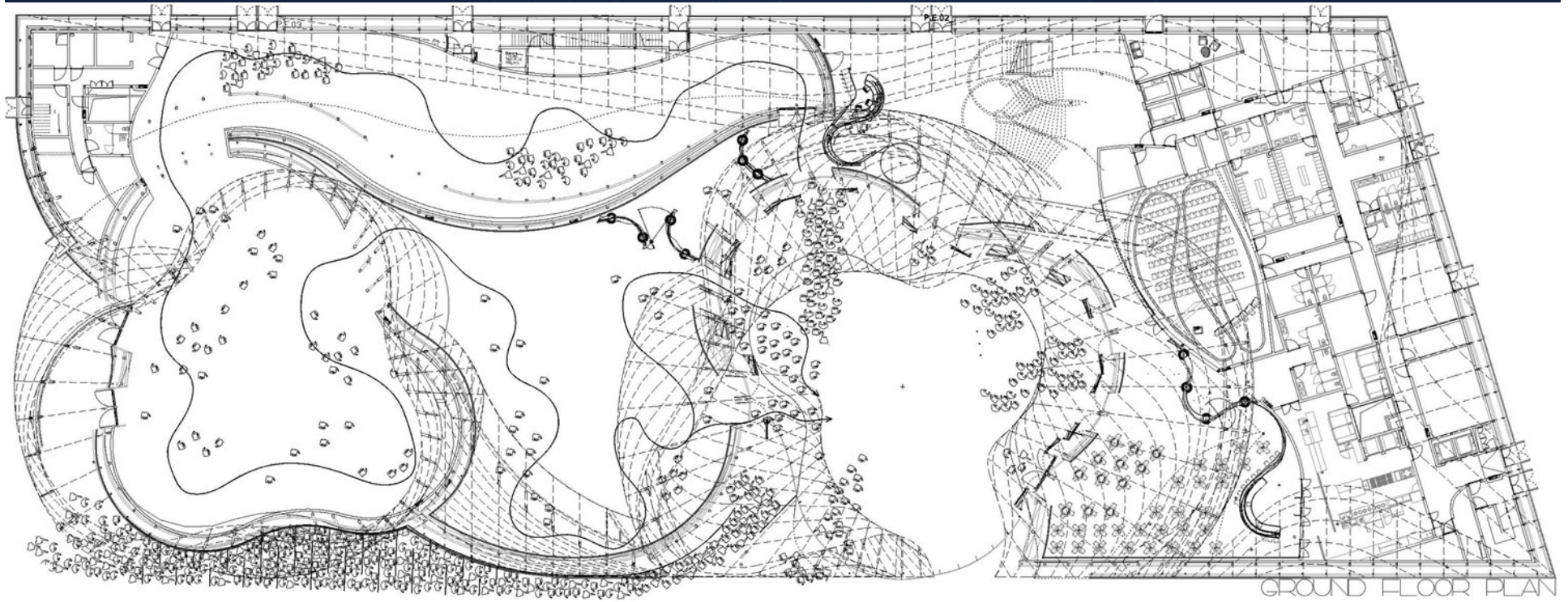
Spanish Pavilion

EMBT Shanghai
Expo 2010



DANWEI PAVILION
WORLD EXPO / SHANGHAI 2010
BENEDETTA TAGLIABUE EMVT.

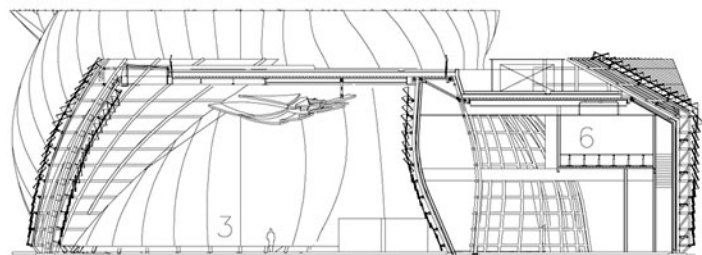




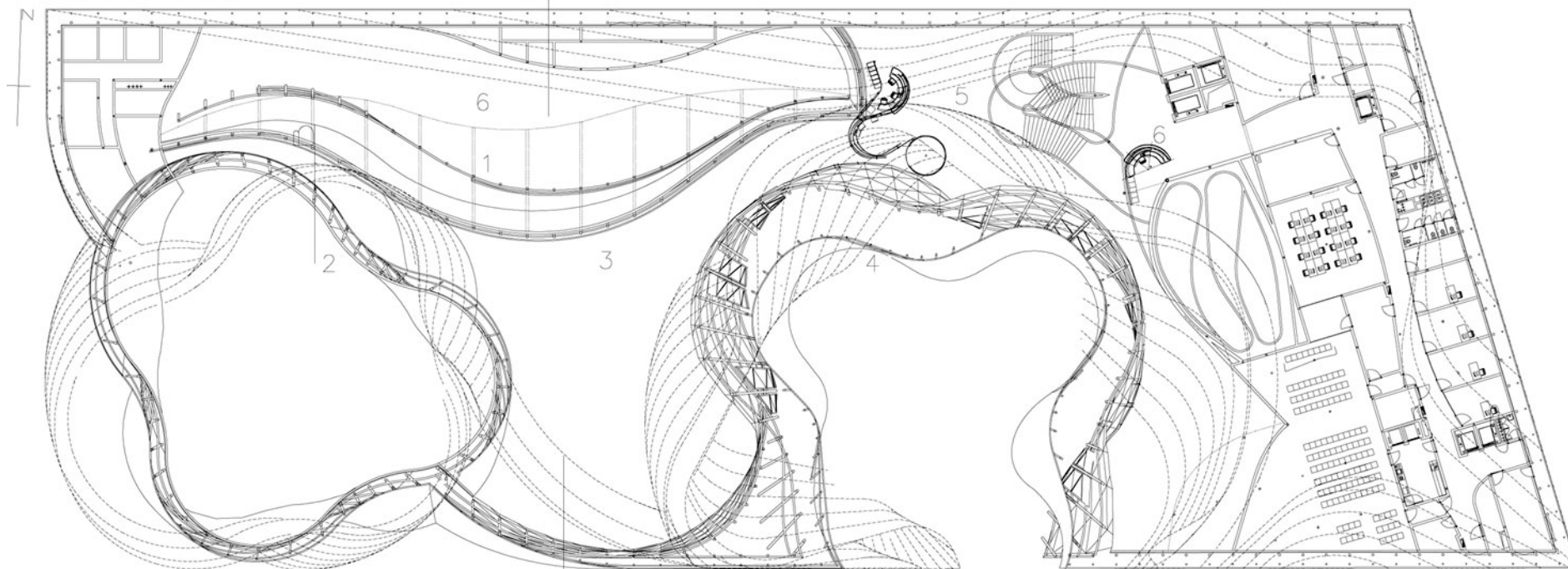
EMBT, BENEDETTA TAGLIABUE
WORLD EXPO SHANGHAI 2010
PANZI PAVILION

82,064 s.f. on four floors

- 1. exhibition room 1
- 2. exhibition room 2
- 3. exhibition room 3
- 4. entrance square
- 5. main entrance
- 6. office area
- 7. restaurant



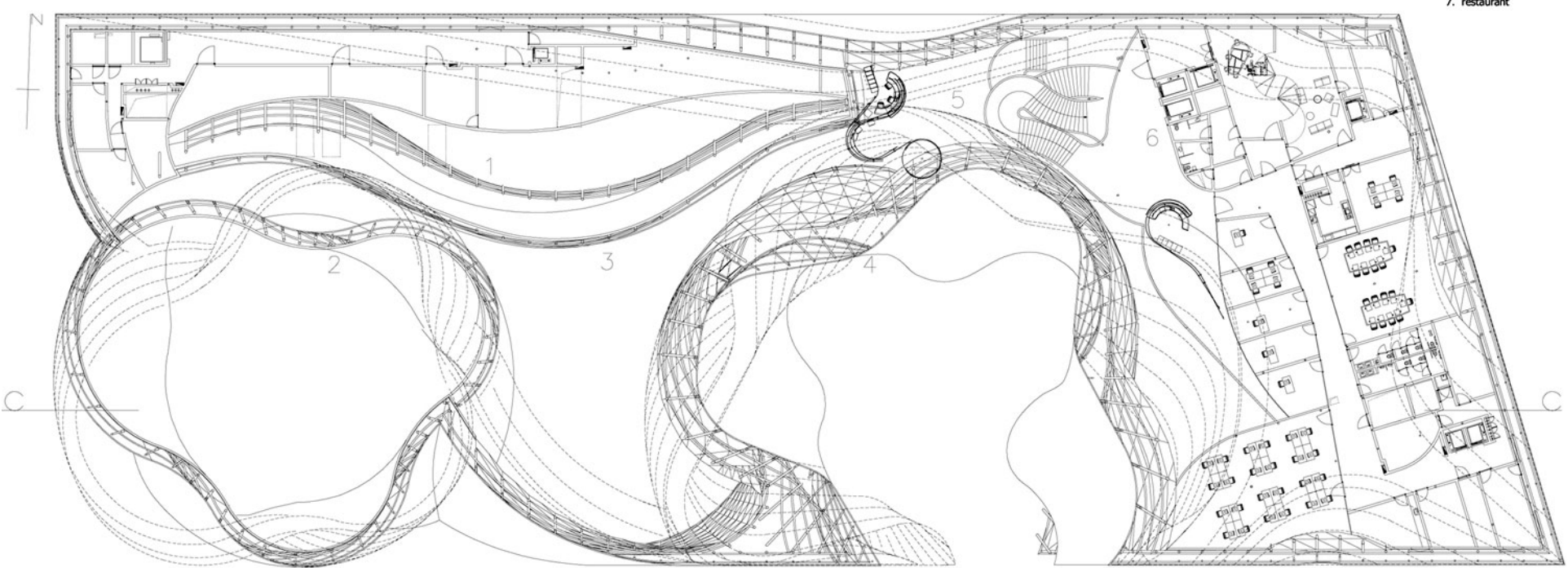
SECTION BB
SCALE 1/500



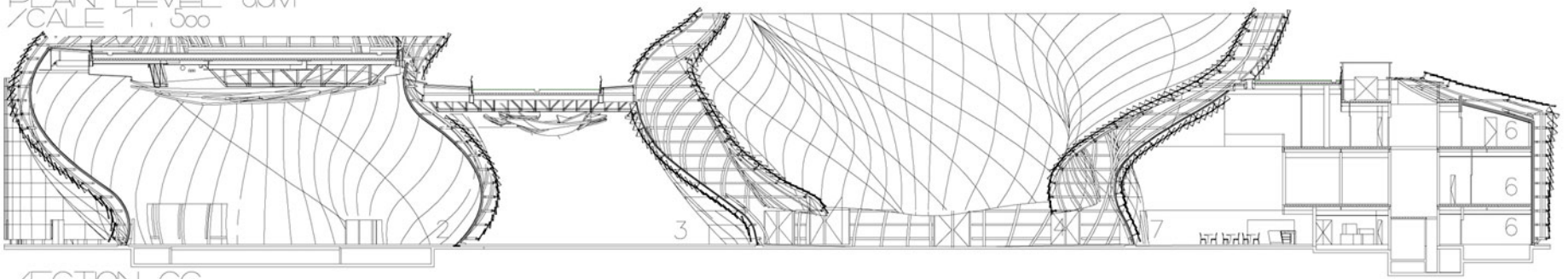
PLAN LEVEL 35M
SCALE 1/500

WORLD EXPO / PANZI PAVILION
SHANGHAI 2010

- 1. exhibition room 1
- 2. exhibition room 2
- 3. exhibition room 3
- 4. entrance square
- 5. main entrance
- 6. office area
- 7. restaurant

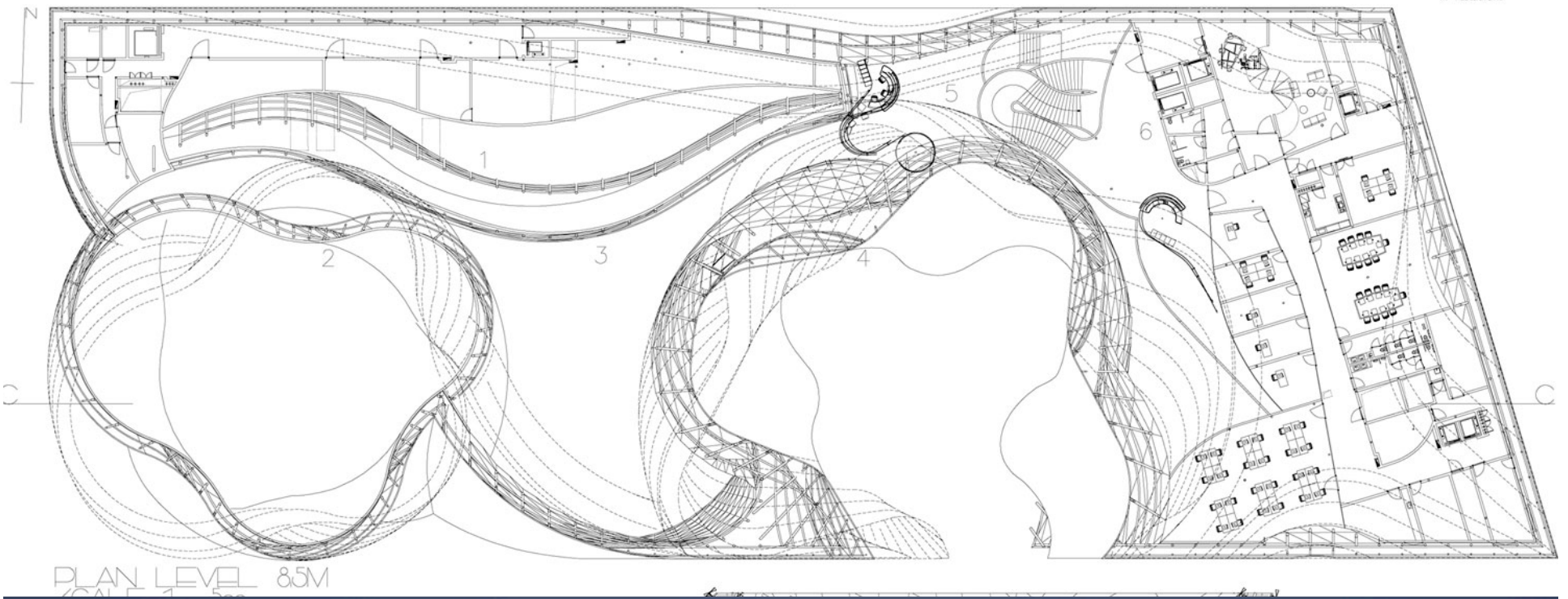


PLAN LEVEL 8.5M
SCALE 1 : 500

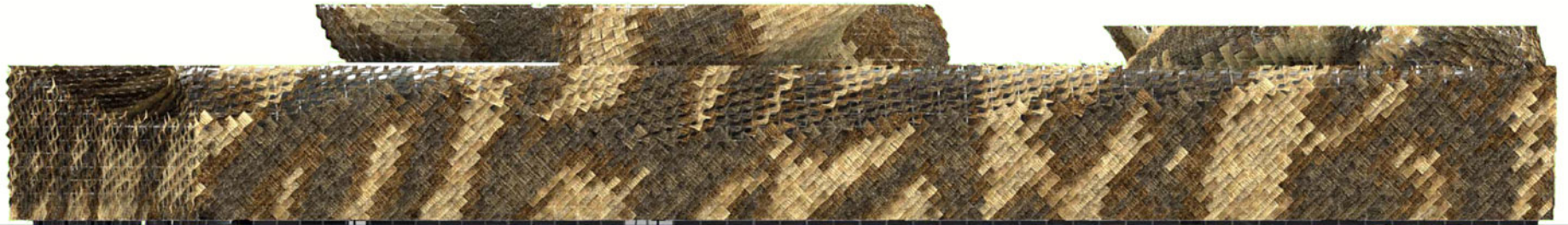


SECTION CC
SCALE 1 : 500

PANAHI PAVILION
WORLD EXPO SHANGHAI 2010



Floorplans of parametric surfaces....take more effort



SR
SOUTH FACADE

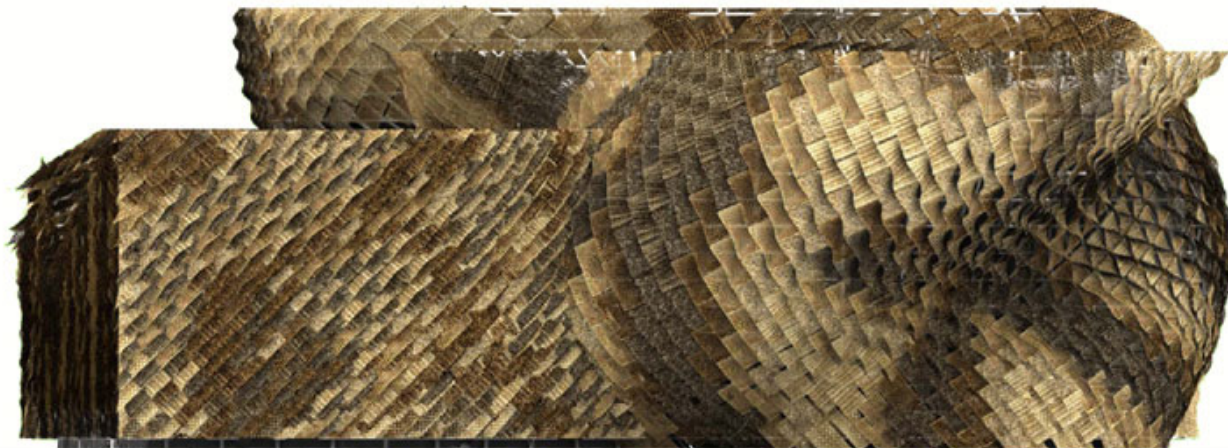


NORTE
NORTH FACADE

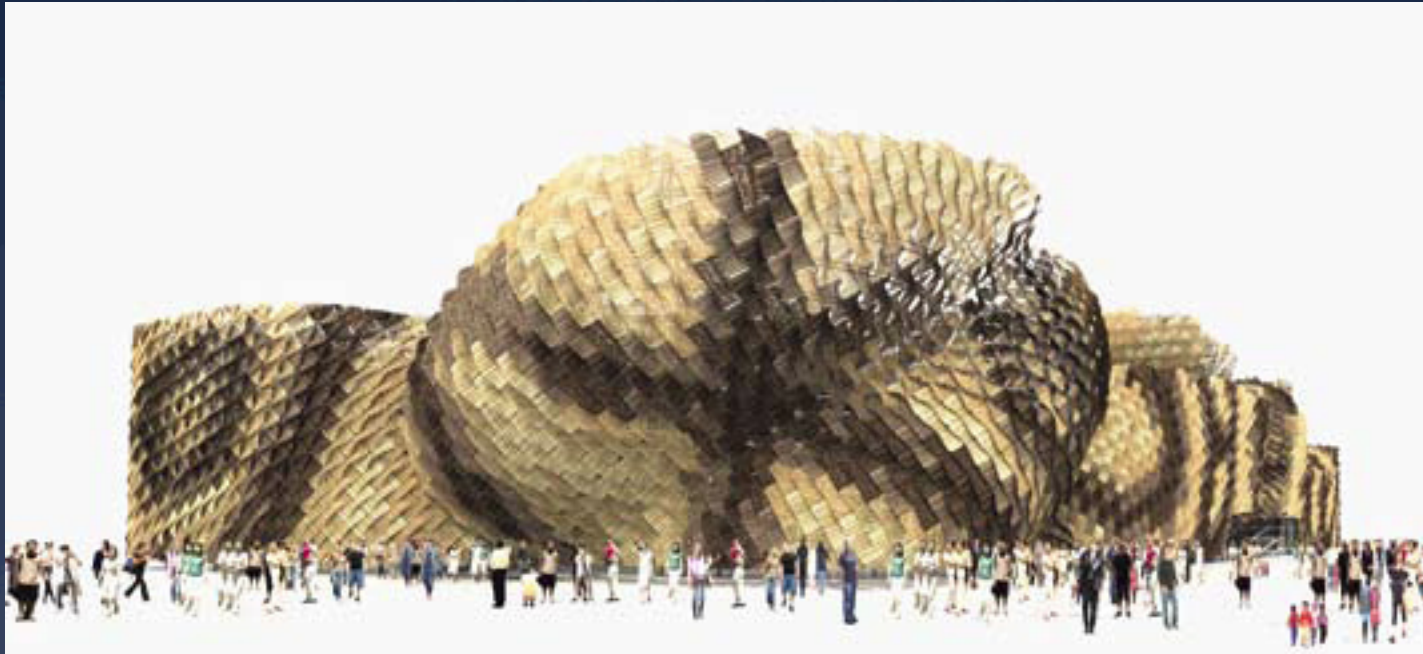
8,200 wicker panels, attached by hand



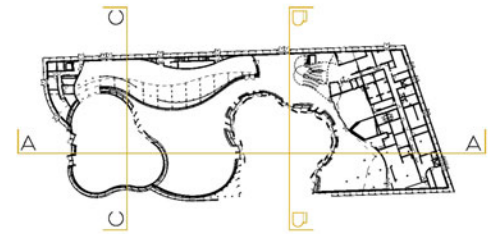
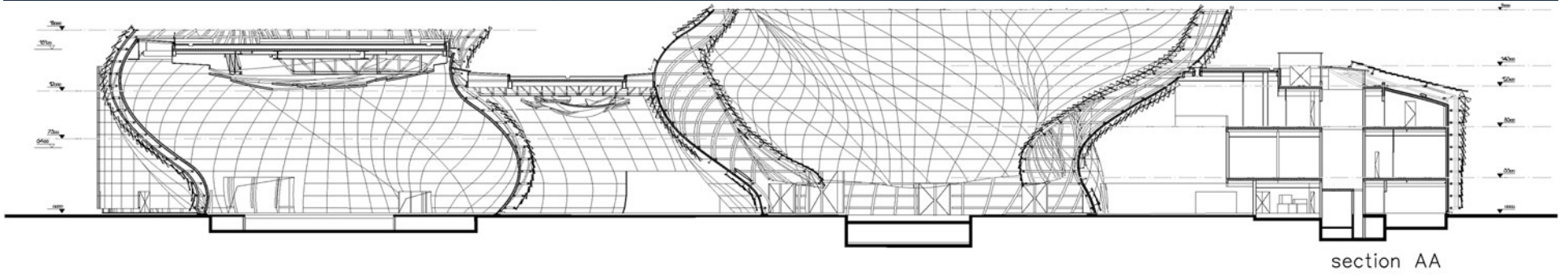
E/TE
EAST FACADE

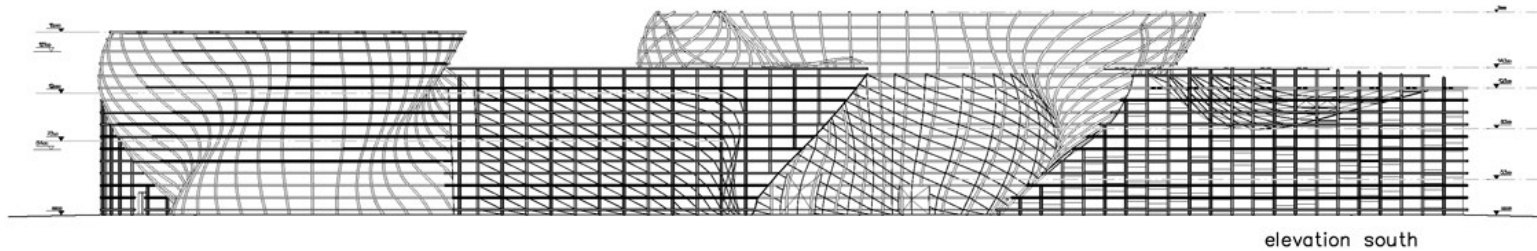


OE/TE
WEST FACADE

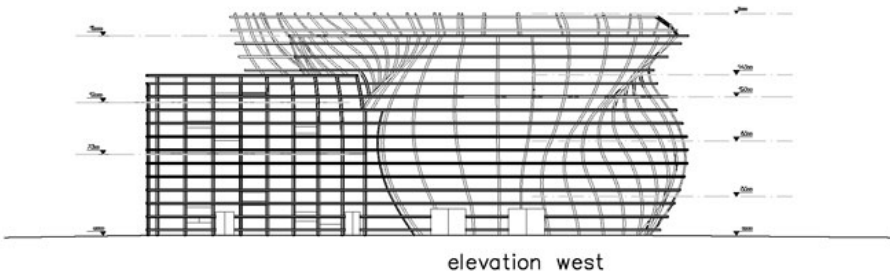


Layers make characters

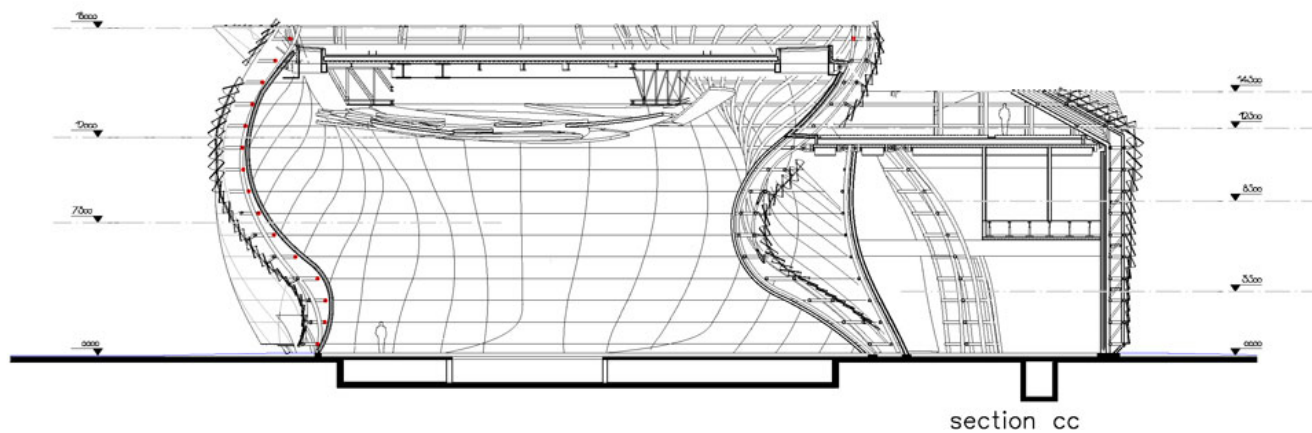
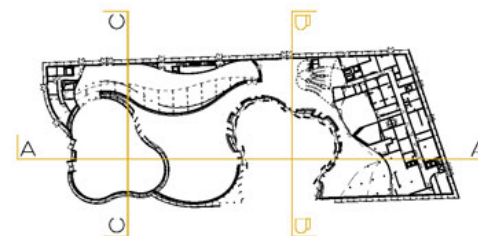




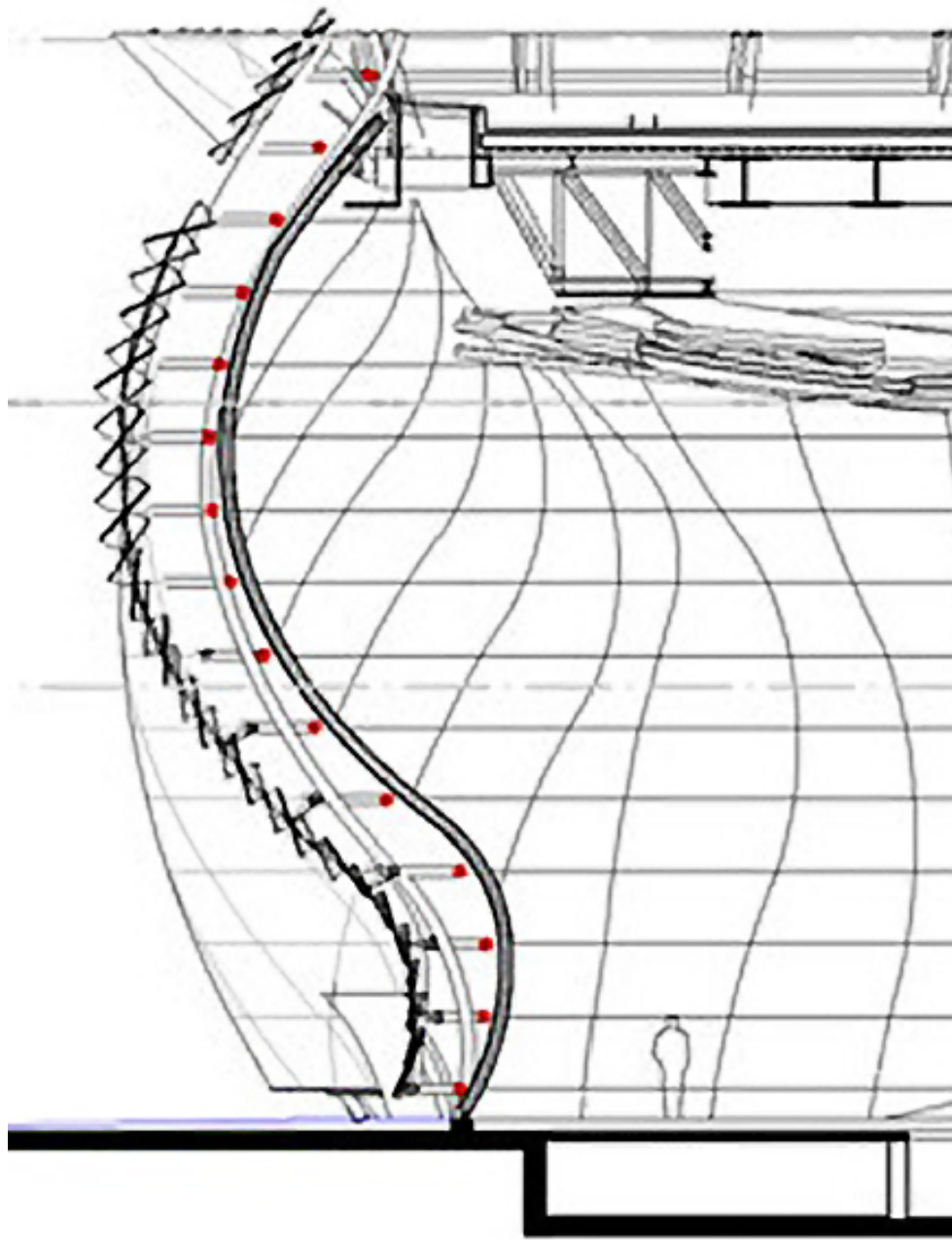
elevation south

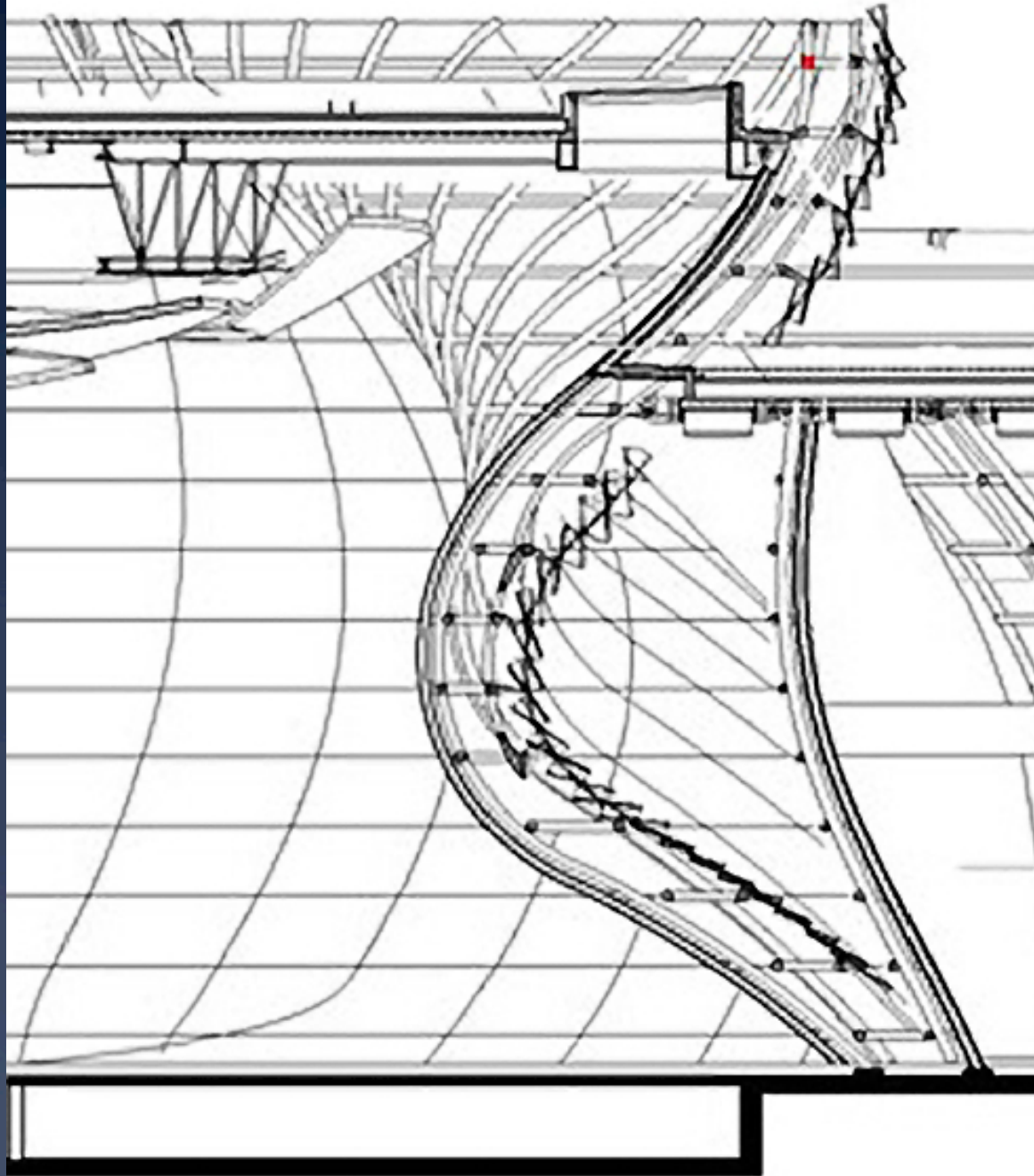


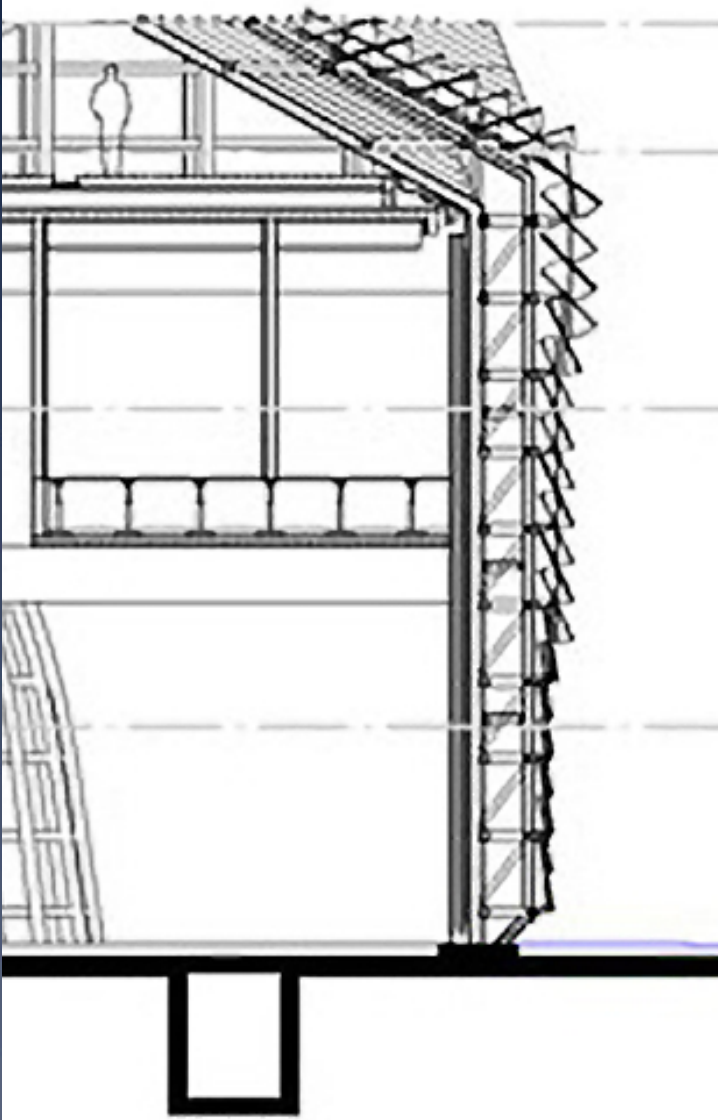
elevation west

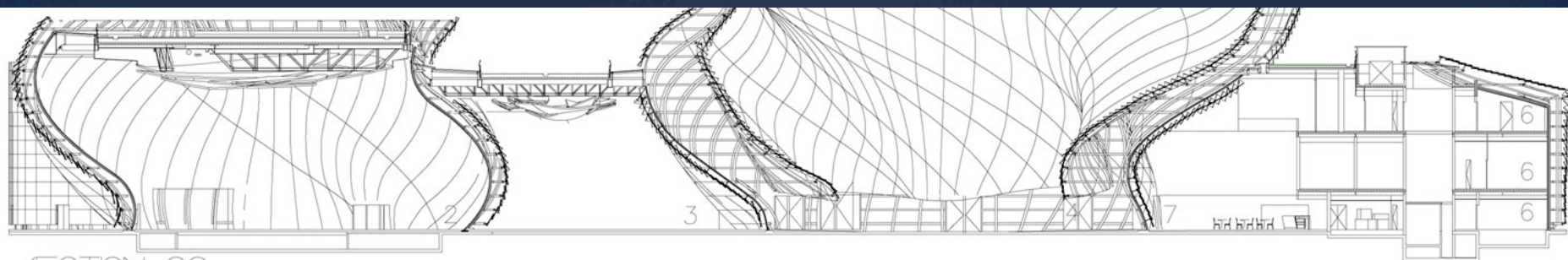


section cc



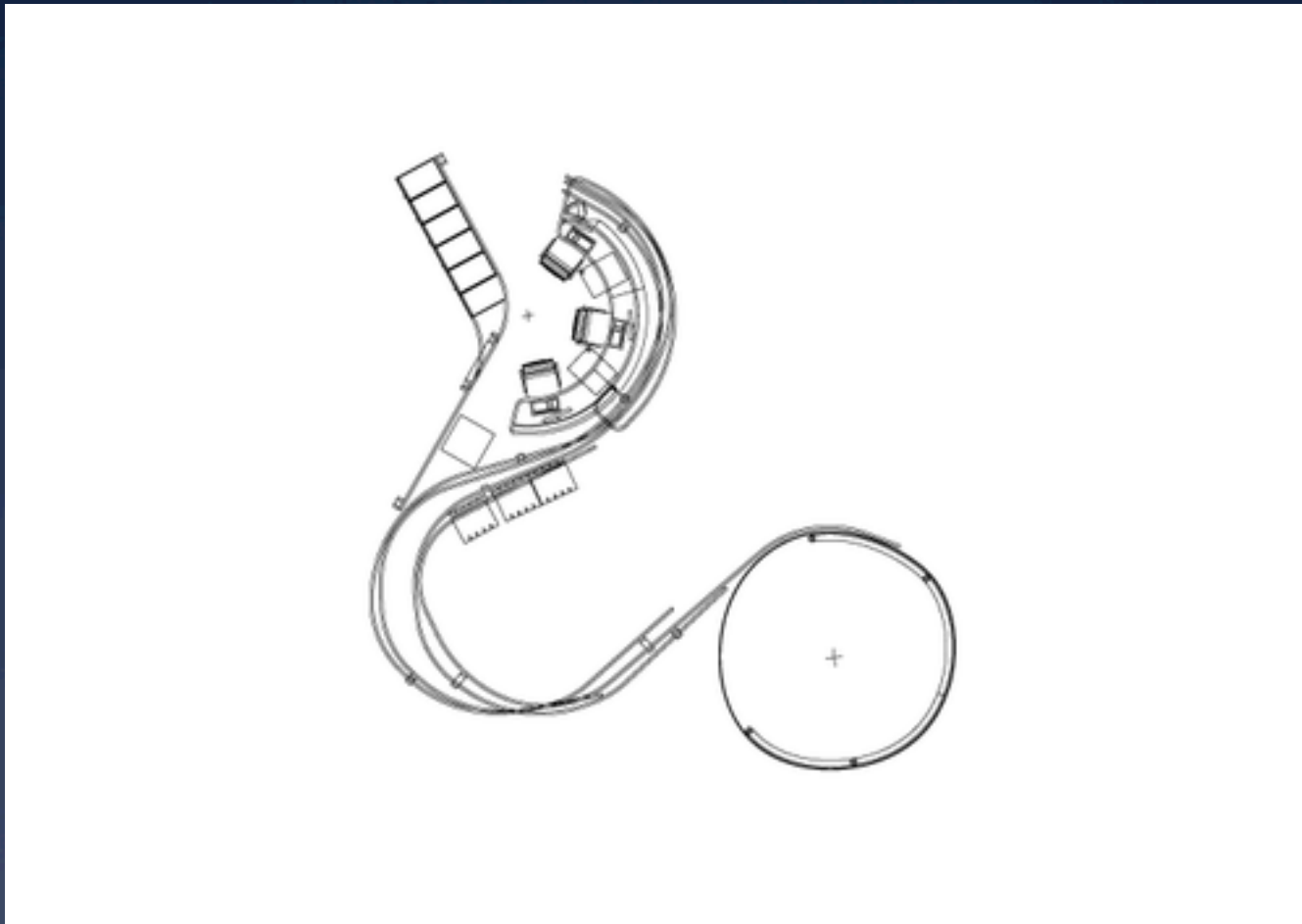




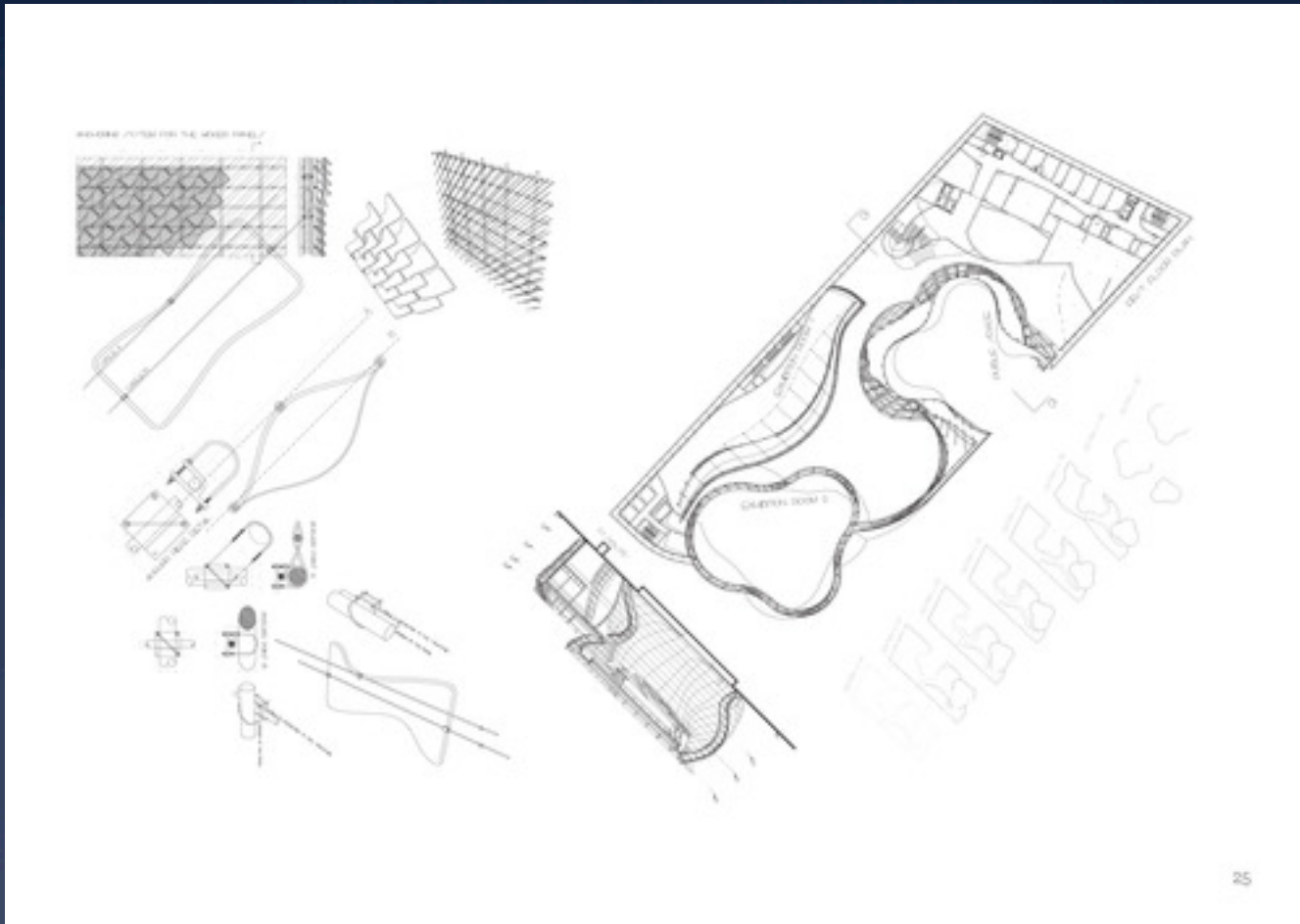


SECTION CC
Section AA

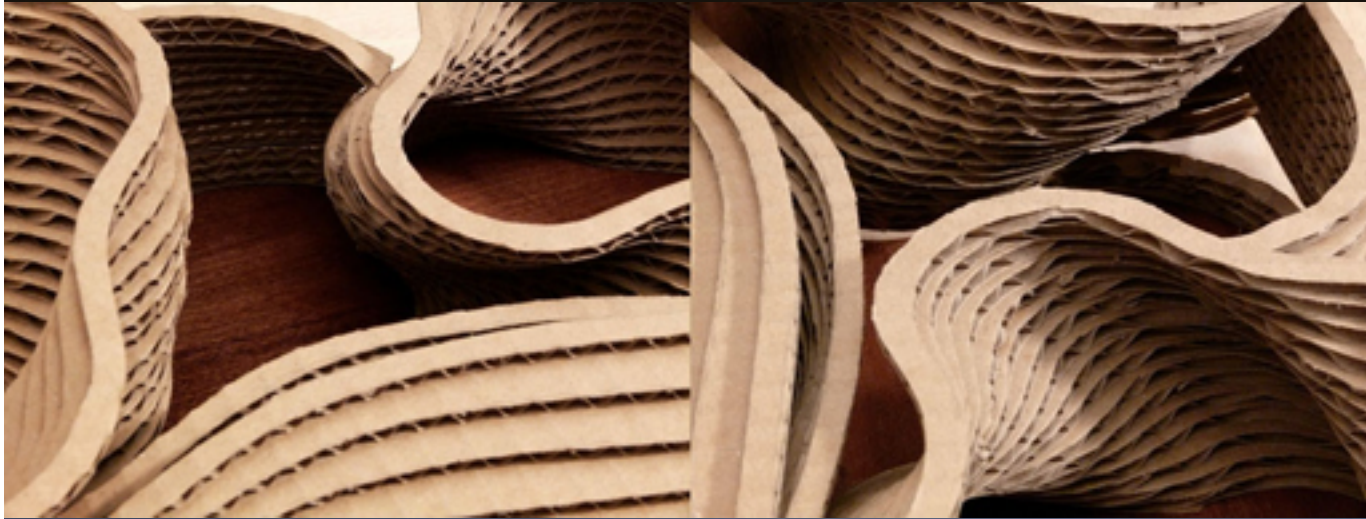
WORLD EXPO
PANJI PAVLION
SHANGHAI 2010



Parts are like the whole



The whole is like the parts

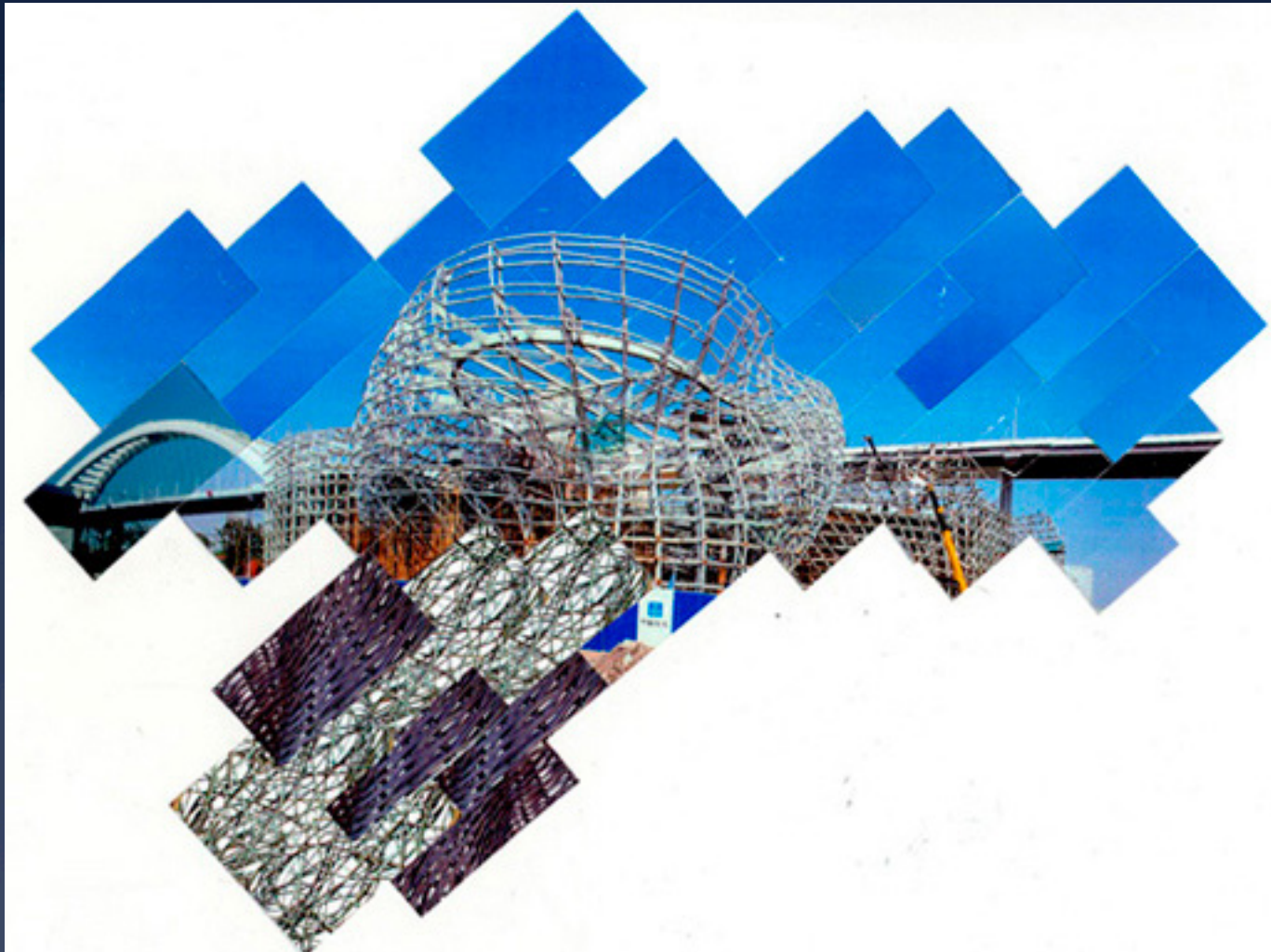


Modeling surfaces in steps... no laser burns?





Physical models allow for discovery



...and construction does not get simpler



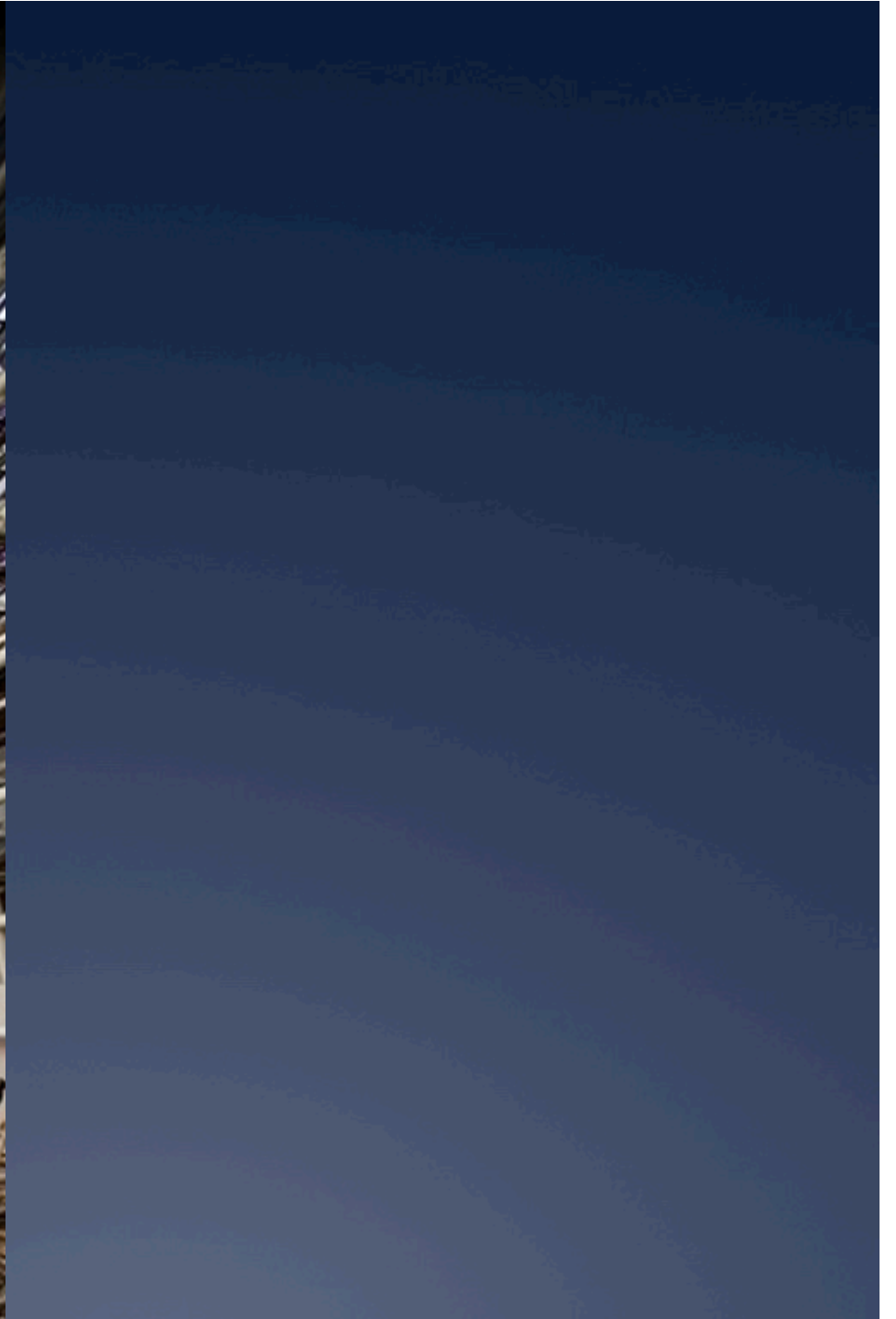






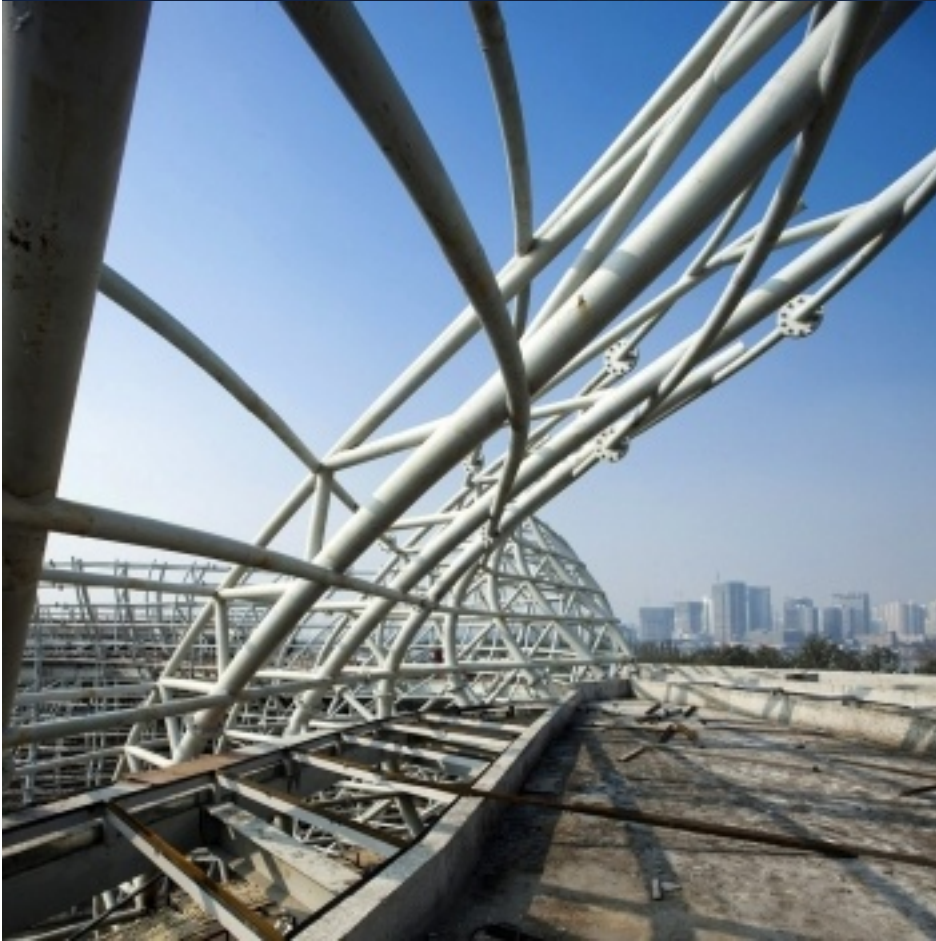
全民参与消防 共筑平安







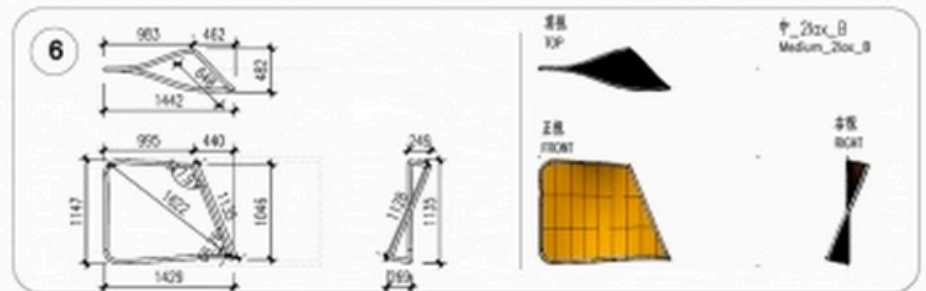
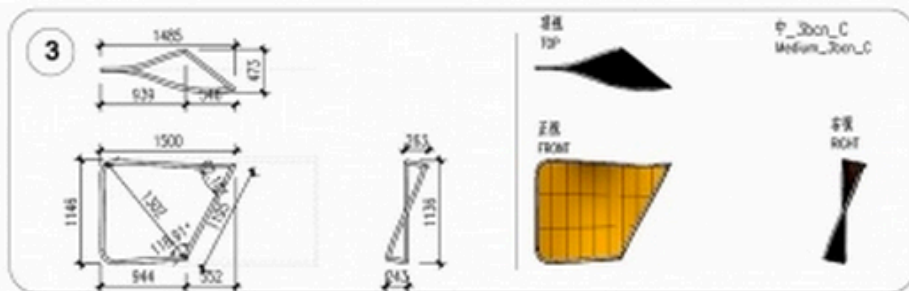
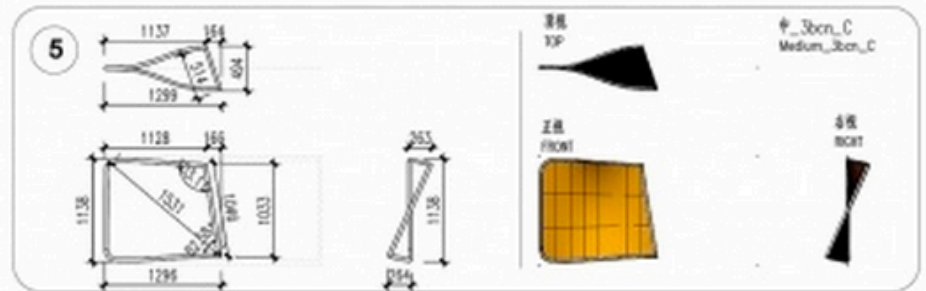
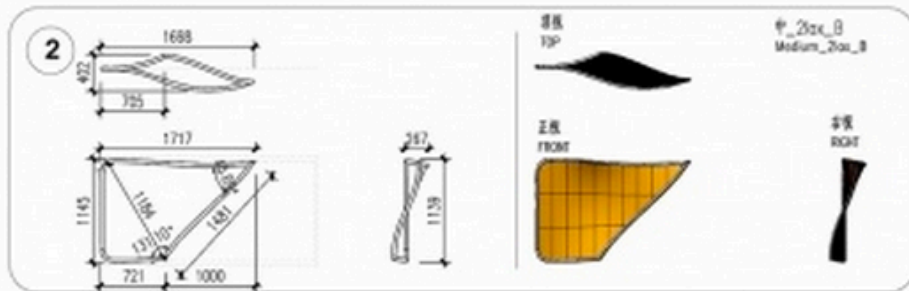
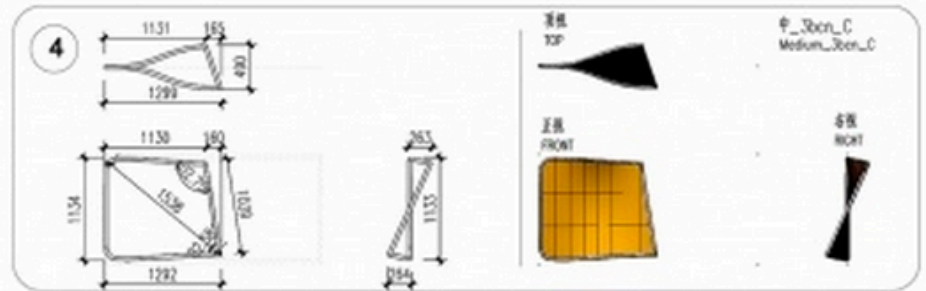
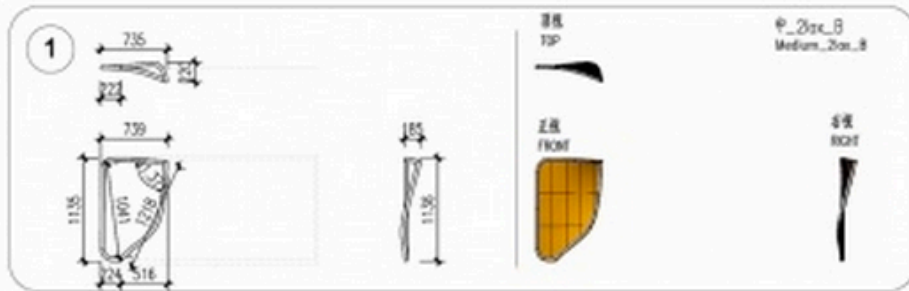


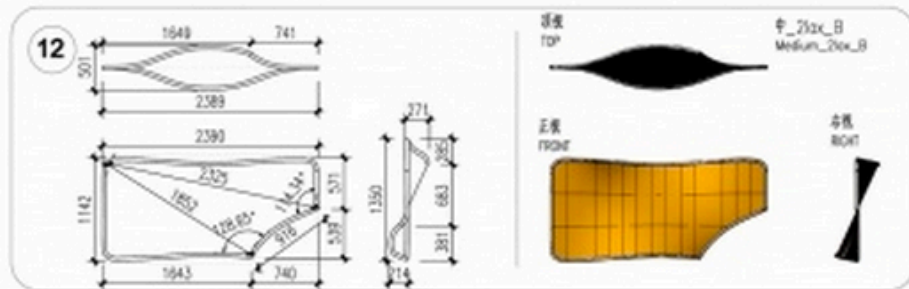
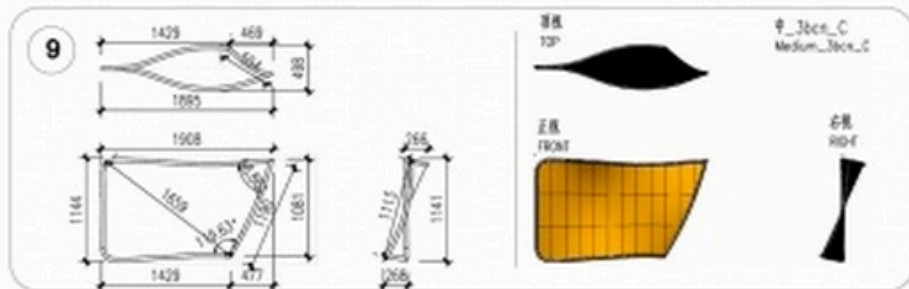
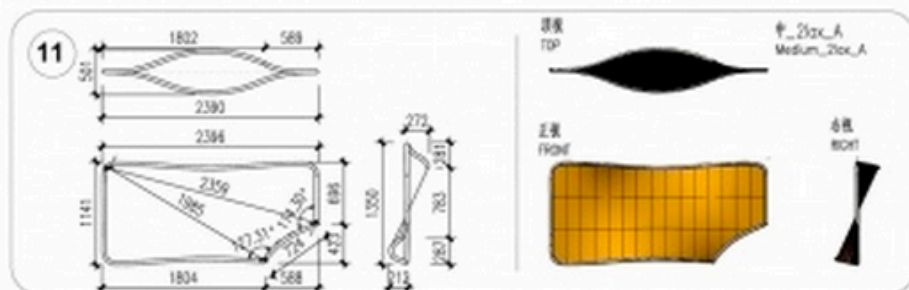
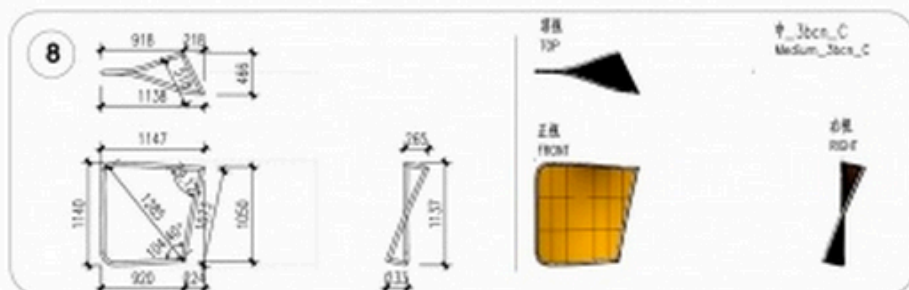
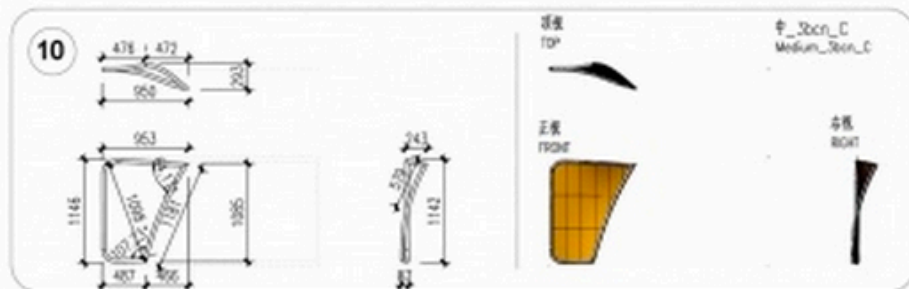
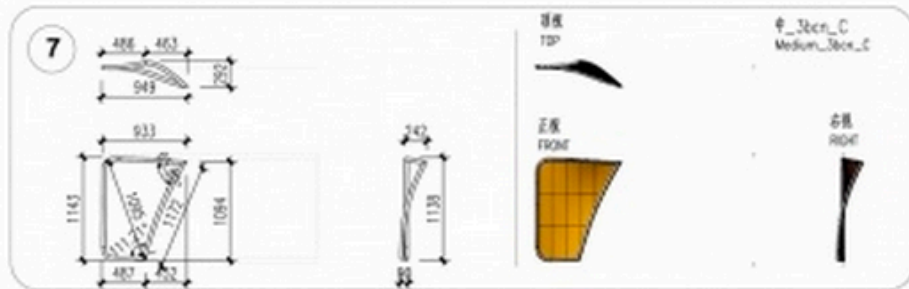




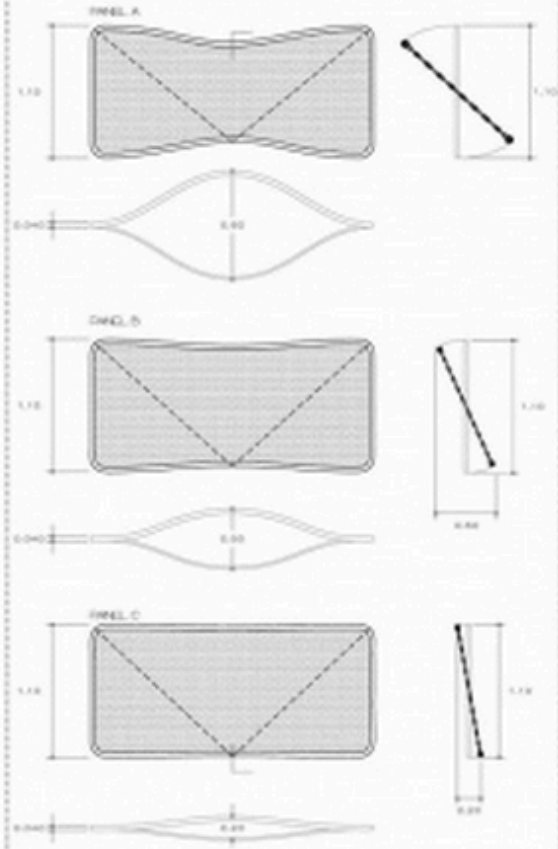




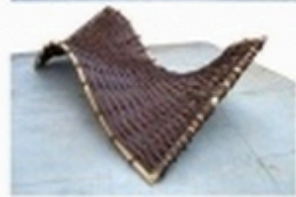




TPO/ DE DISEÑO/
TYPE/ OF PANEL



TRENZADO Y COLORES/
WEAVE AND COLOR



TRENZADO
WEAVE



COLOR A



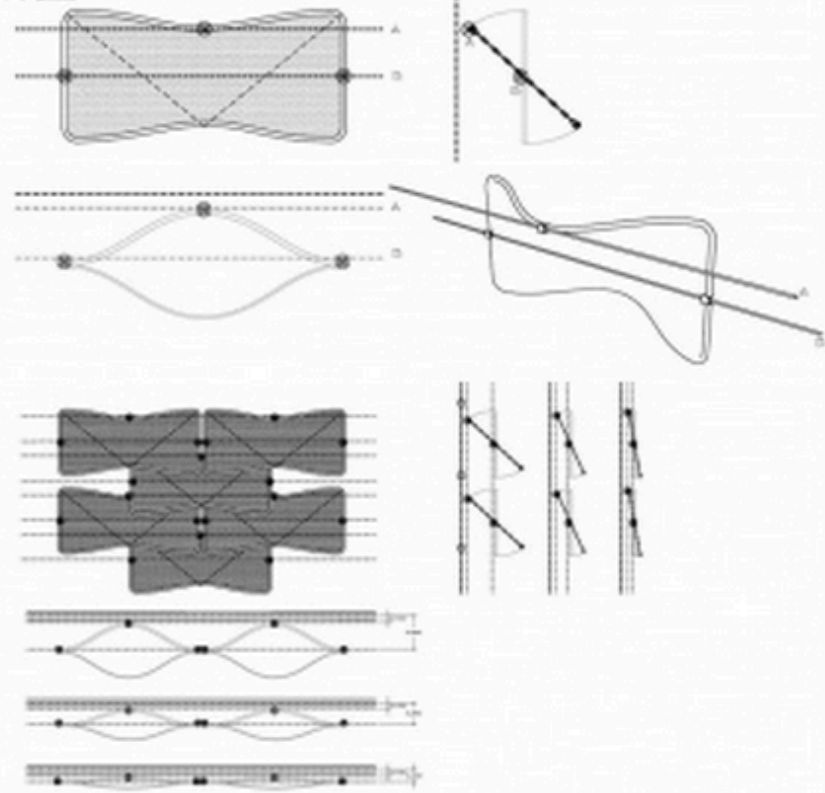
COLOR B



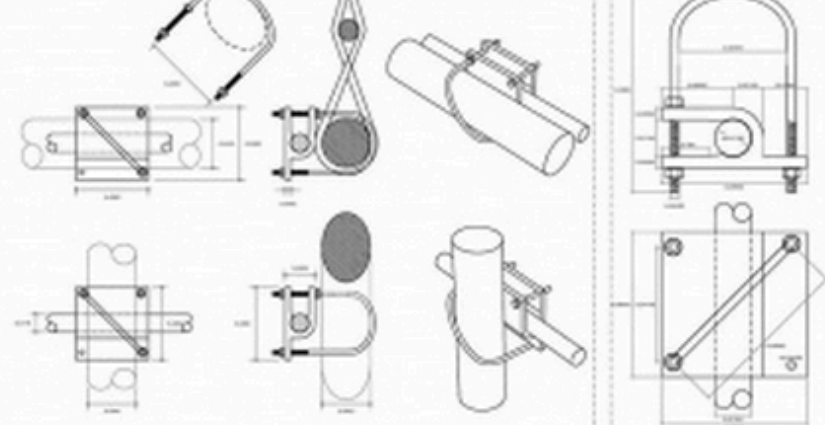
COLOR C



TEMA DE ANCLAJE DE
PANEL



TEMA DE ANCLAJE



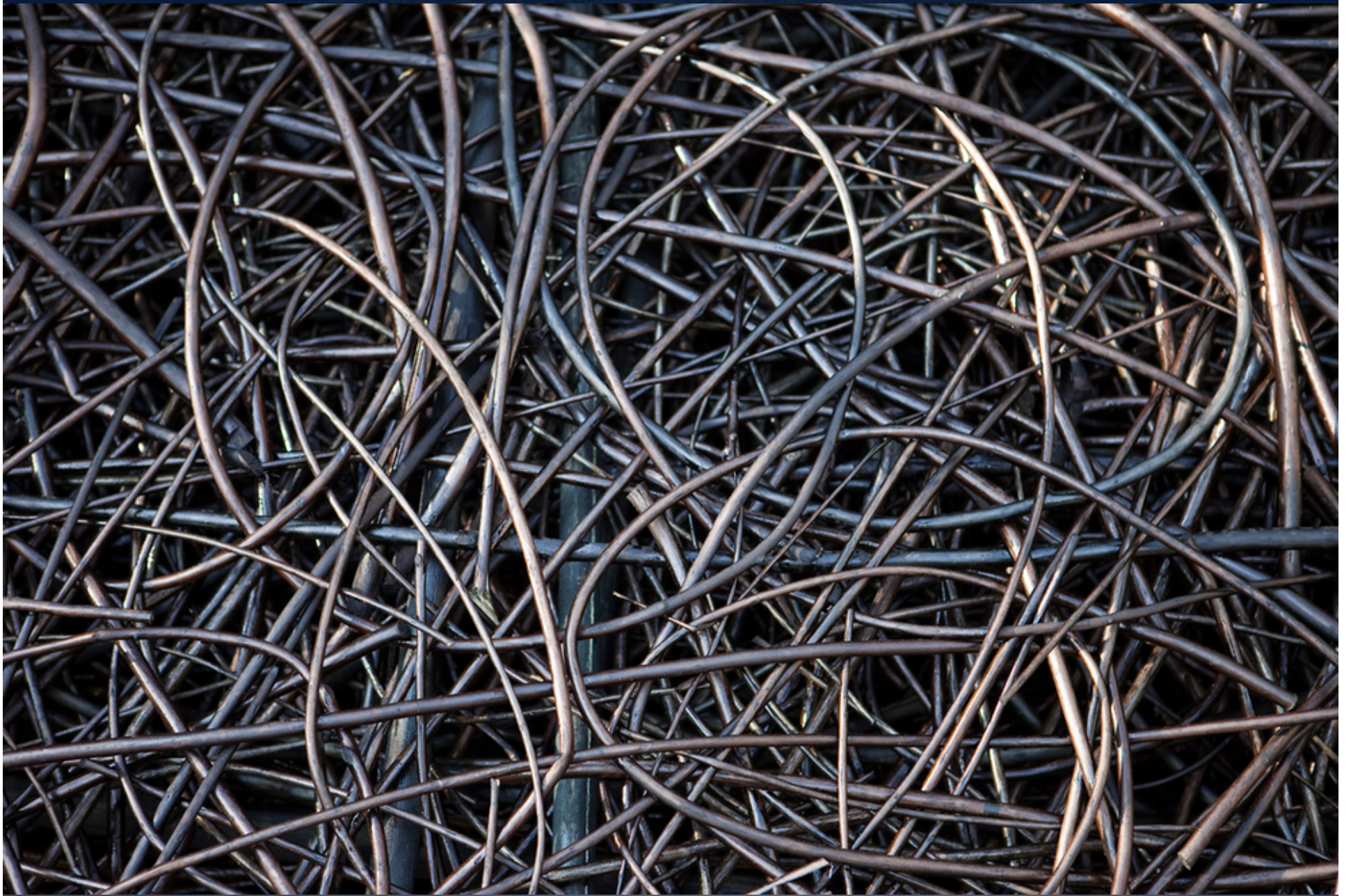






















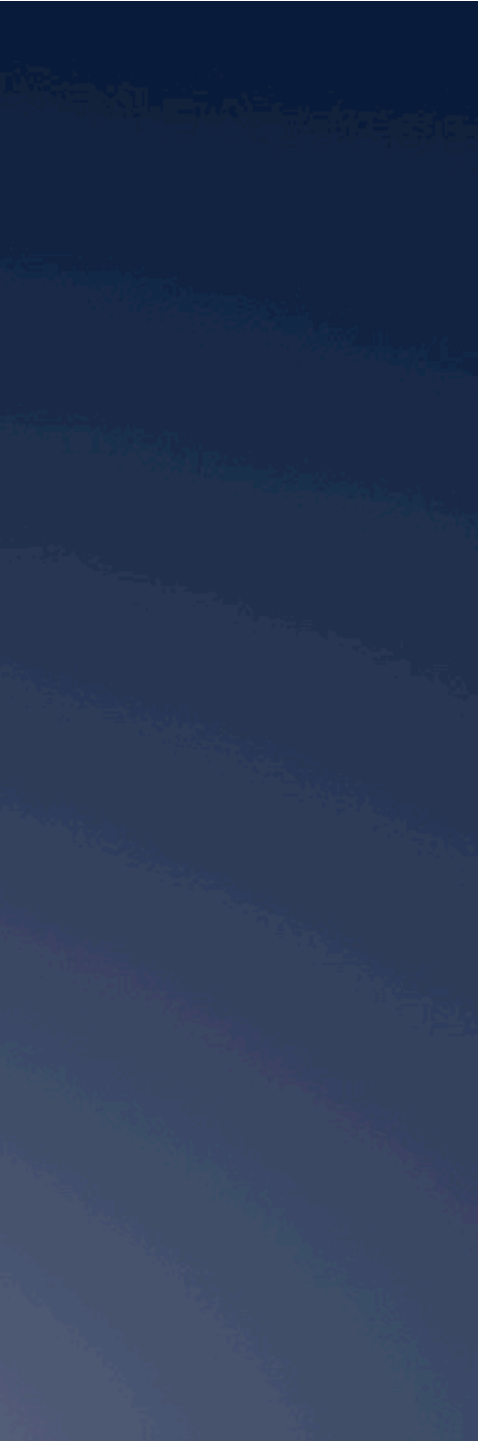
Meshes, mats,
and walls that are
ducts



Walls as screens of wood paper

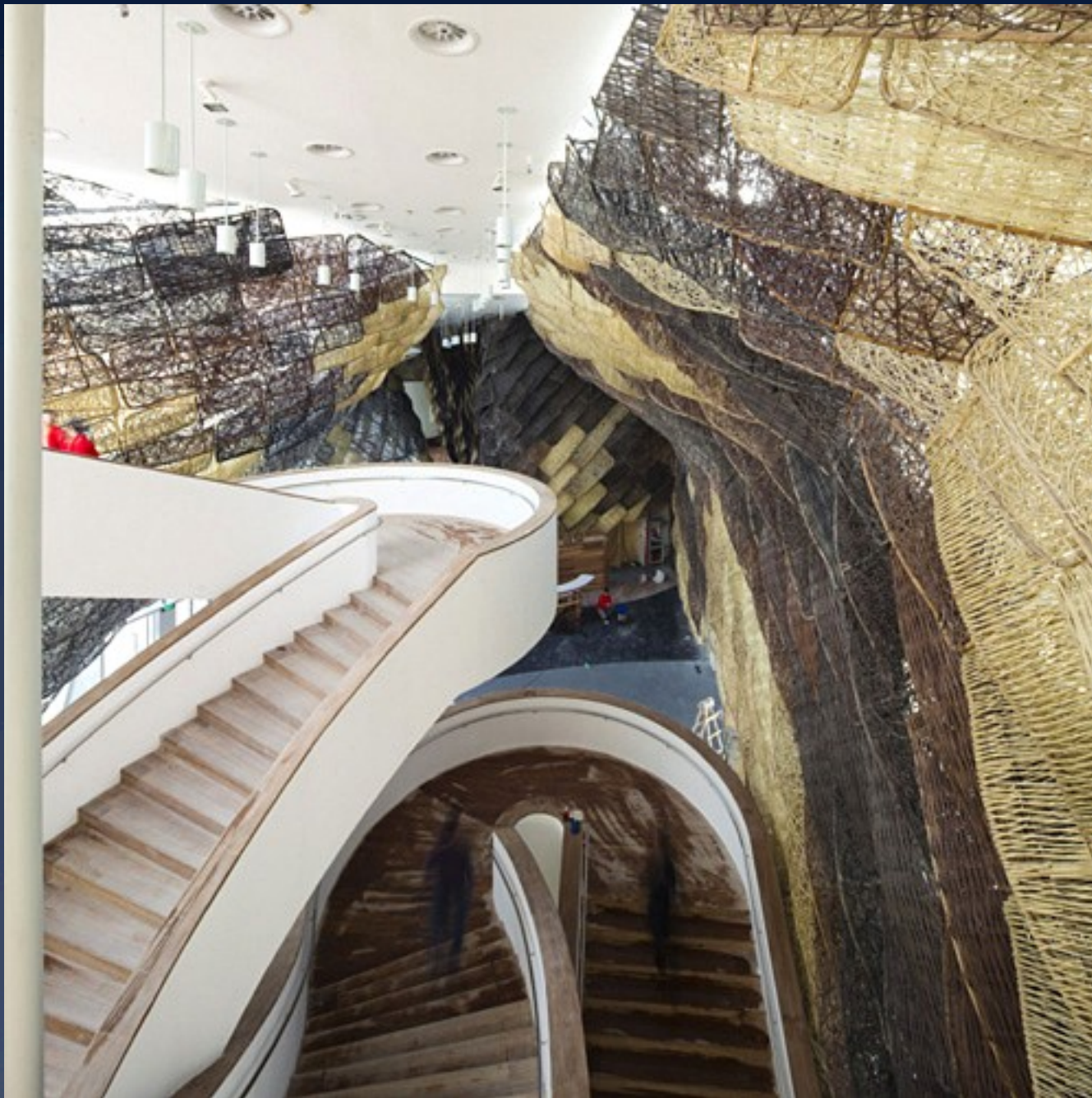


Why we design...not simply make layouts

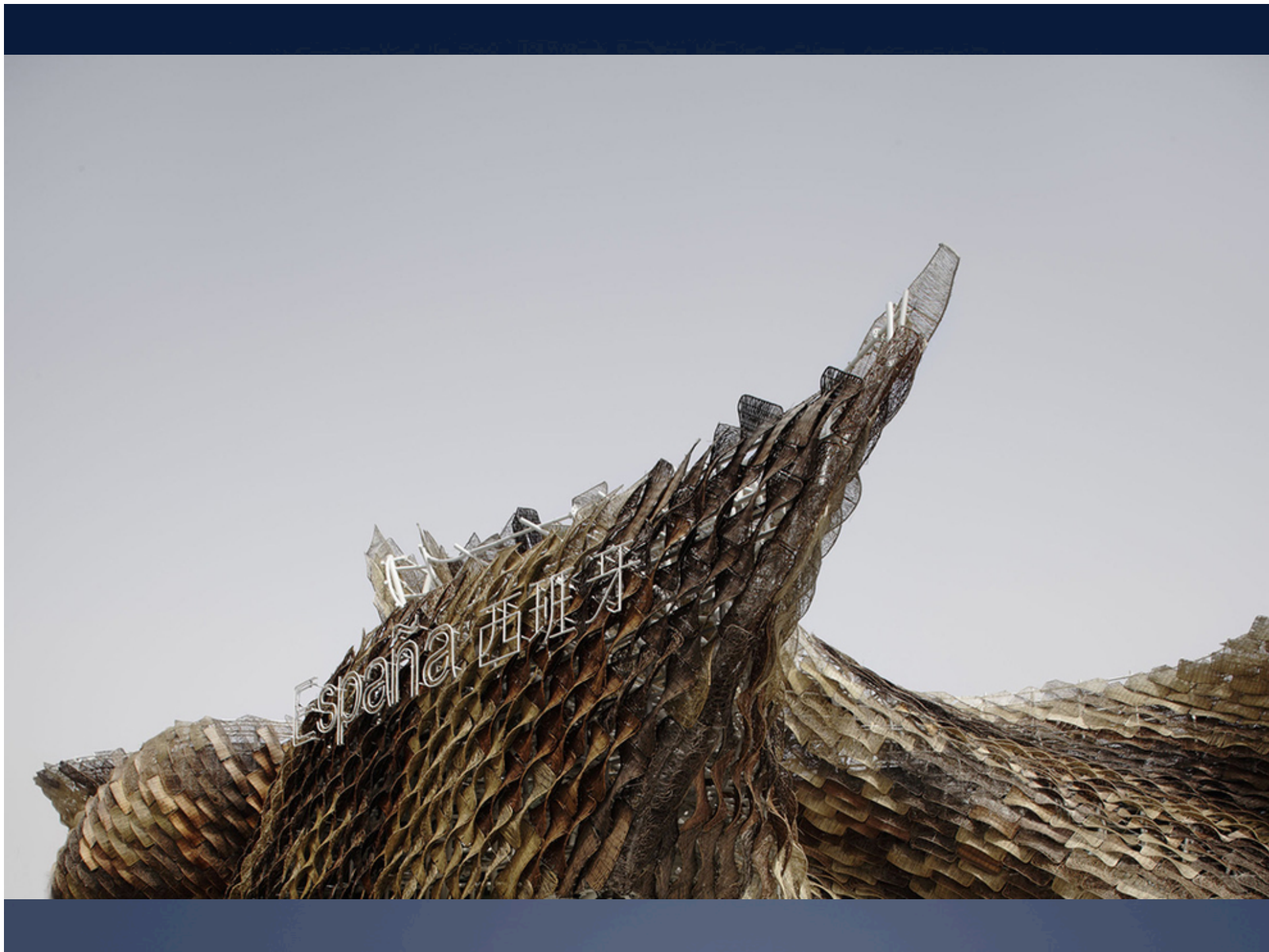




























Pavilion of Spain - World Expo 2010 - Shanghai, China - Medialon

