

Welfairytales

The Danish pavilion at EXPO 2010 is called Welfairytales – a blend of the words welfare and fairy tales.



The geometry of the Pavilion is a modified logarithmic spiral on plan, and is rectangular in section of around 10 m wide by 4.5 m high for the typical section. Each 90° section of the spiral is divided into 8, with a steel frame at each division. This results in a frame spacing of around 5 m.

The first stage of the geometry has its starting point at the core, after which the rectangular tube section moves along the ground through a quarter-circle. The second stage launches into a cantilever which rises to 7.5m above the ground, completes the remaining 270° and connects again to the core, directly above the starting section. In the third stage, the tube continues around the spiral, angling downwards inside the plan of the original curve, turning through 360° and meeting the starting point on the ground.



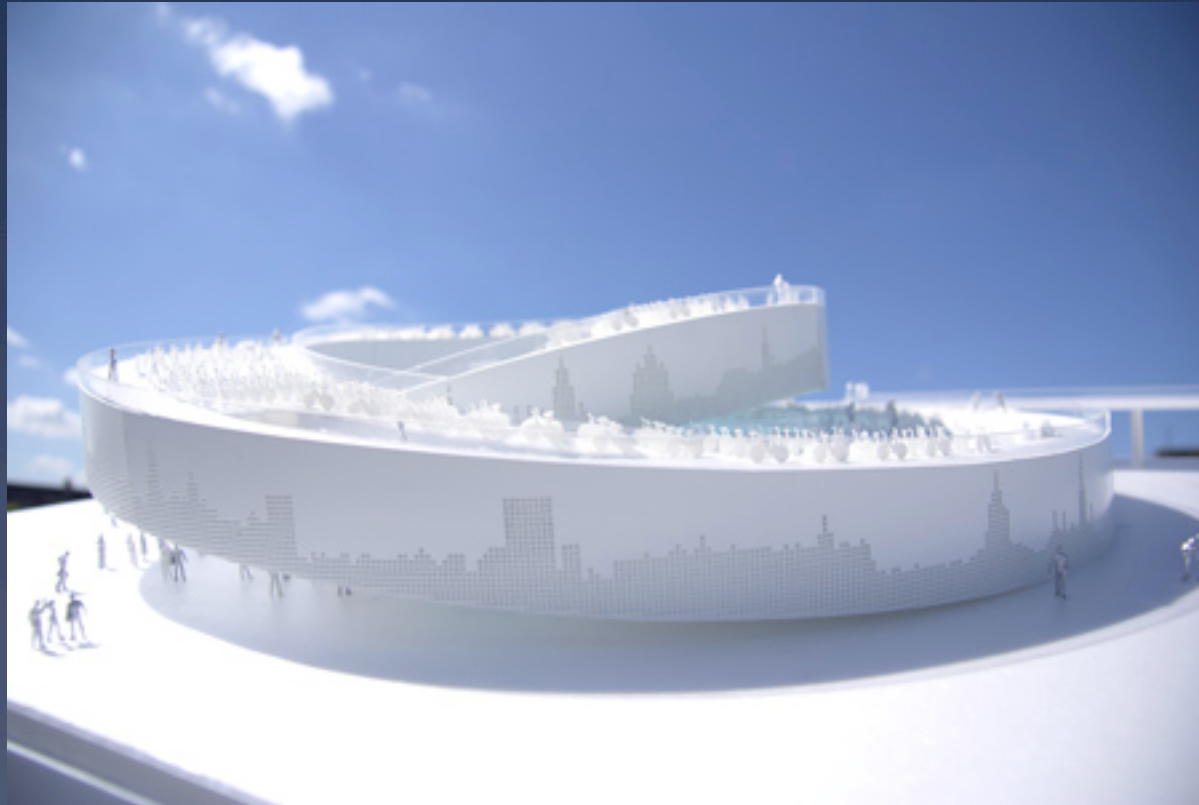


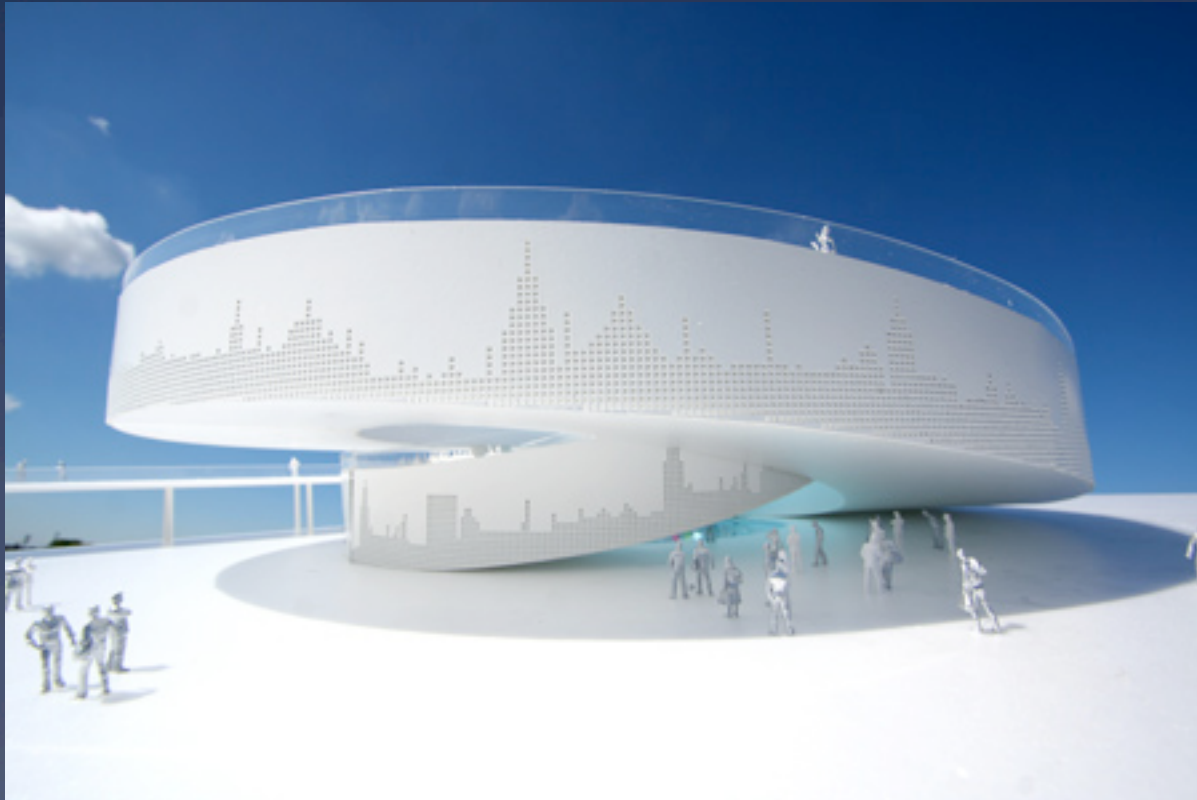
CLICK

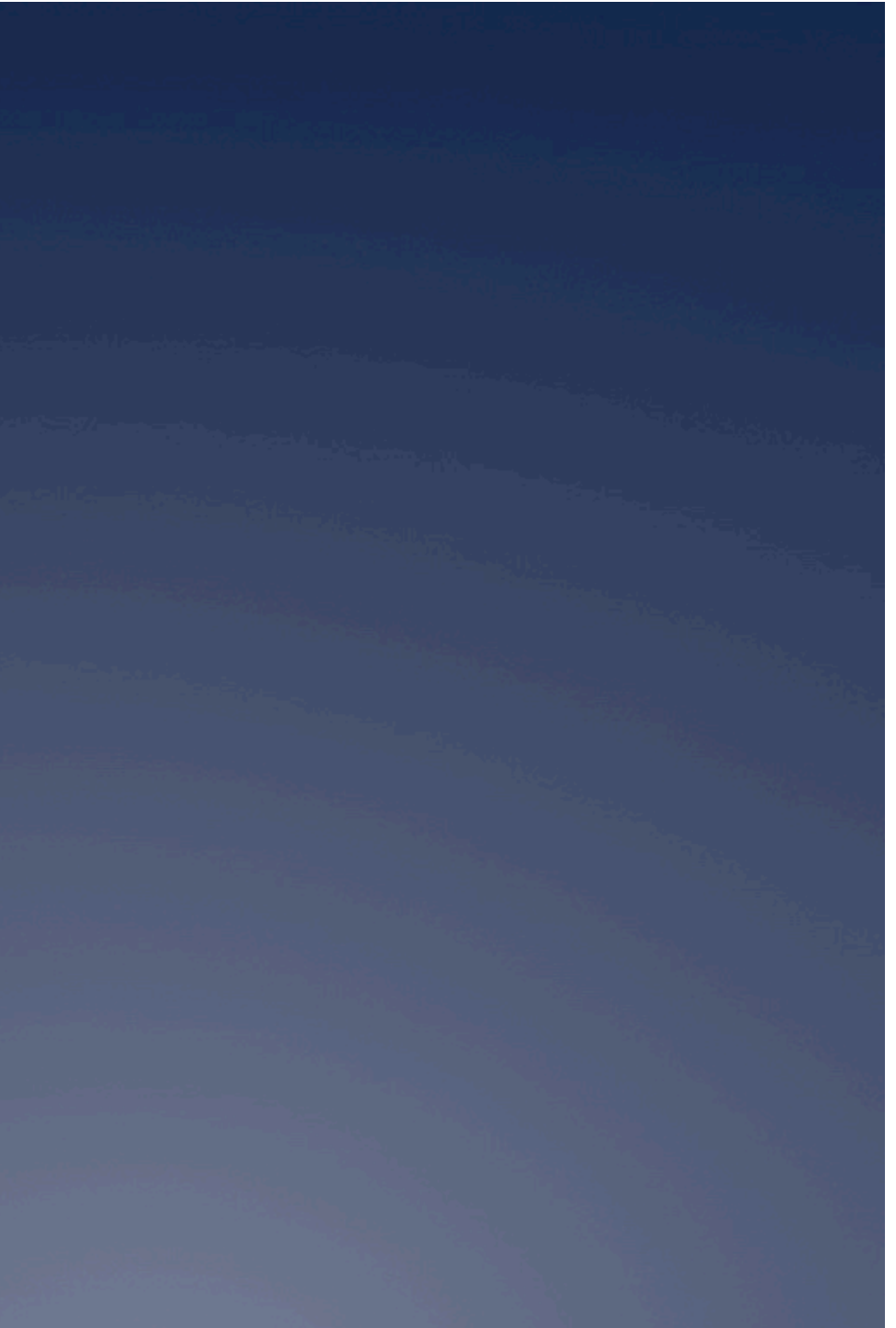
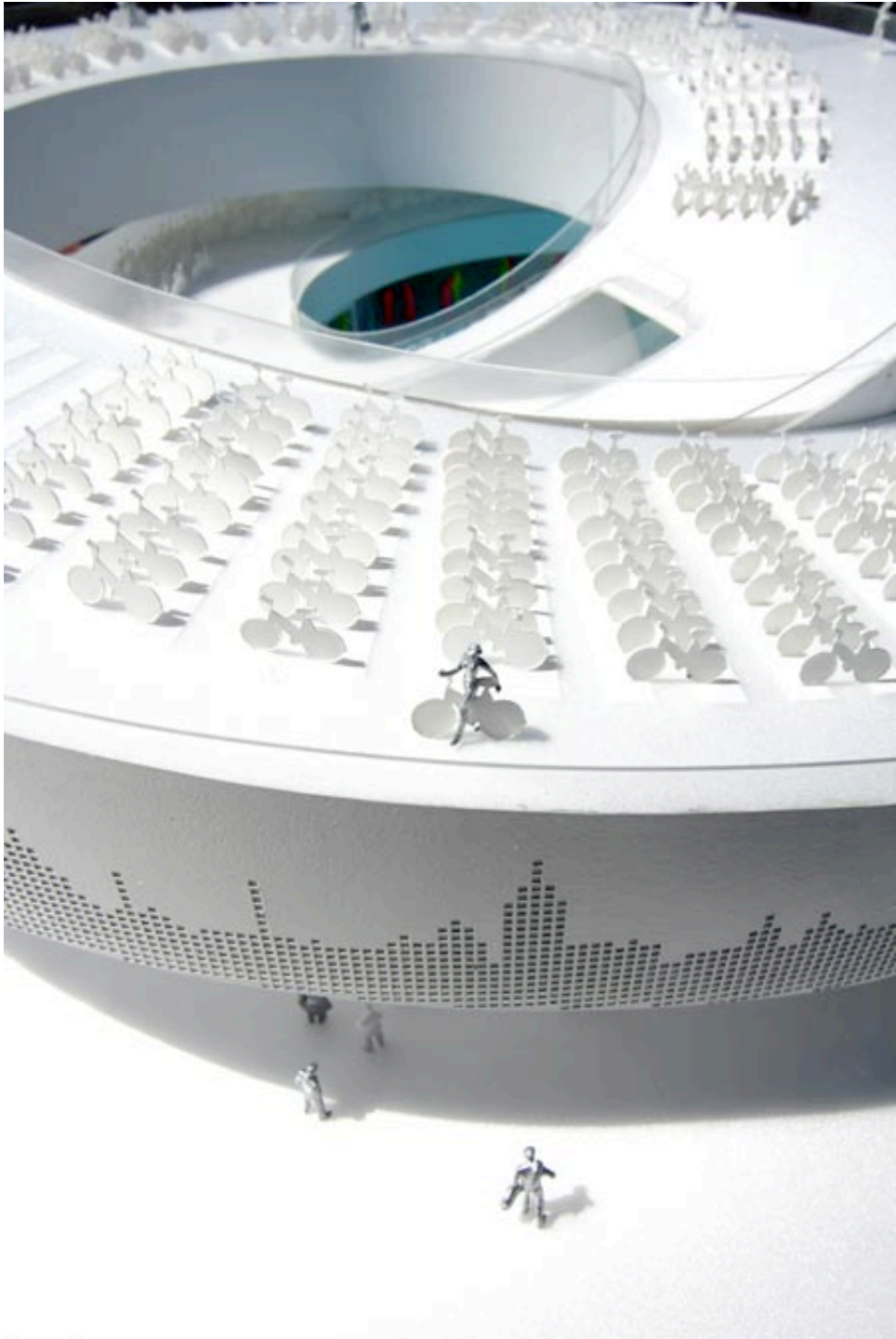




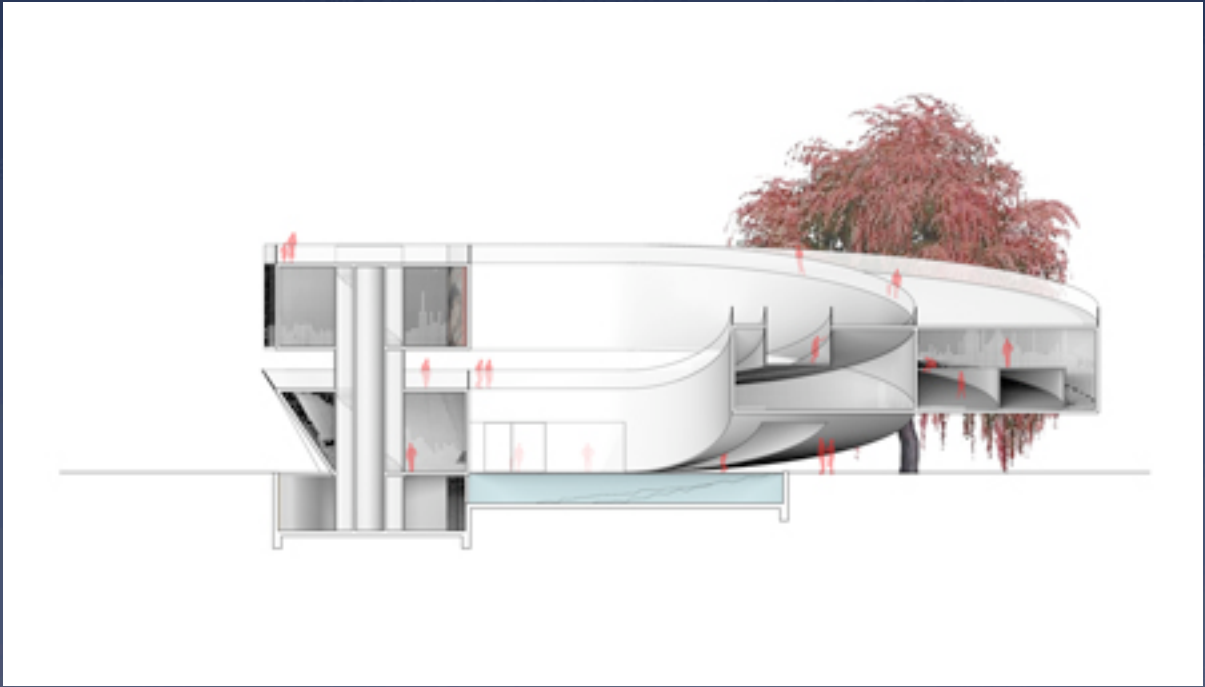


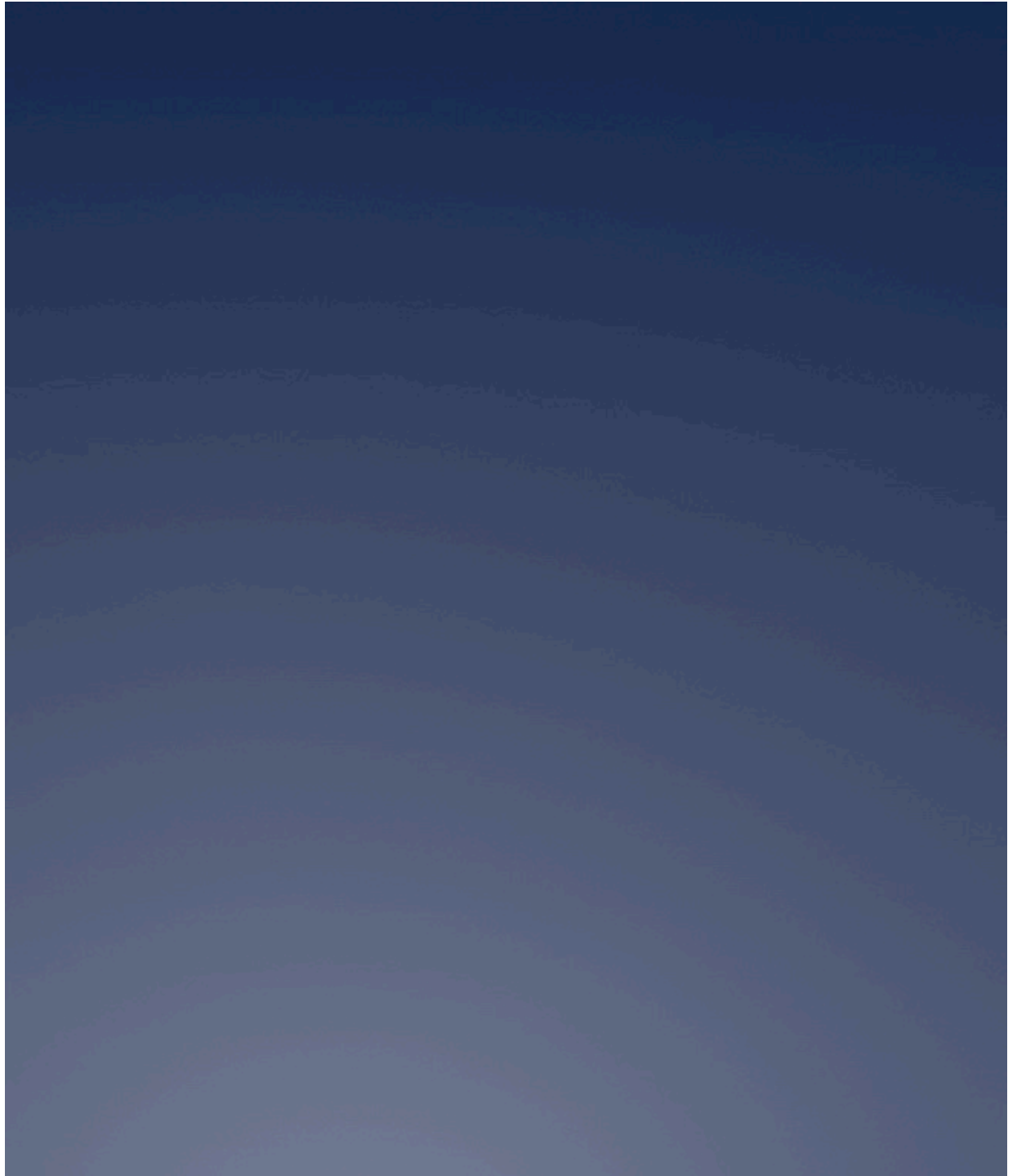
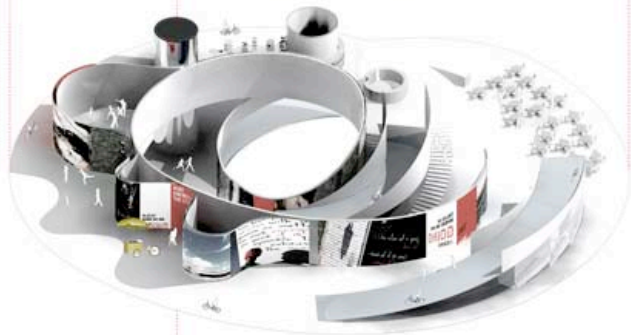
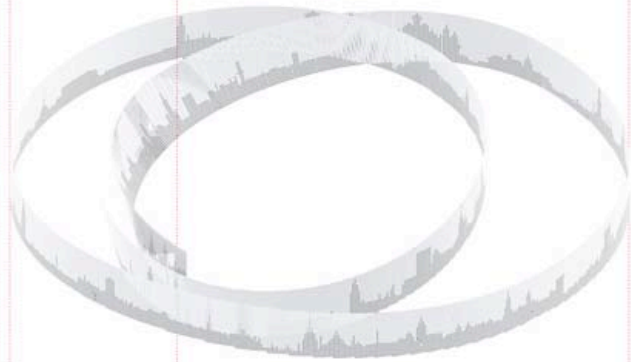
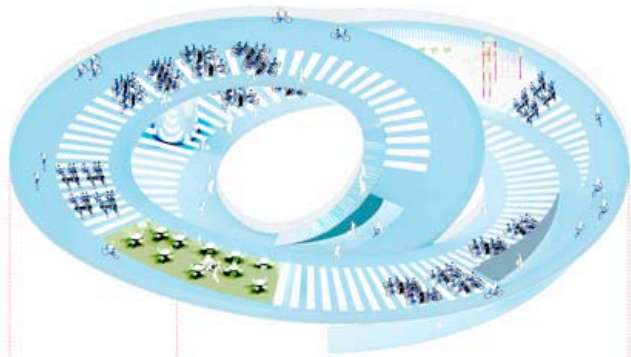




















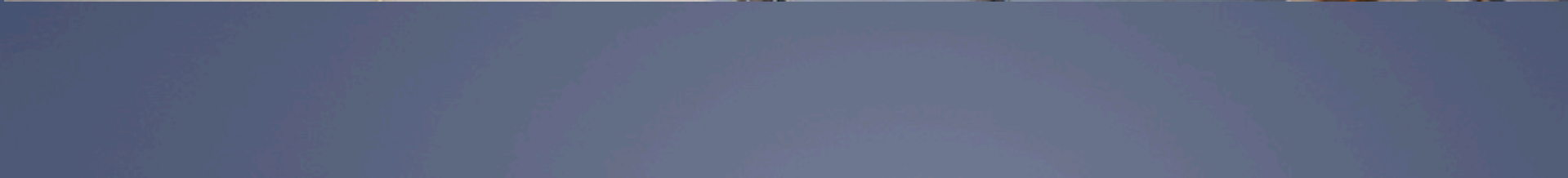


















Heatherwick studio, British Pavilion Shanghai

