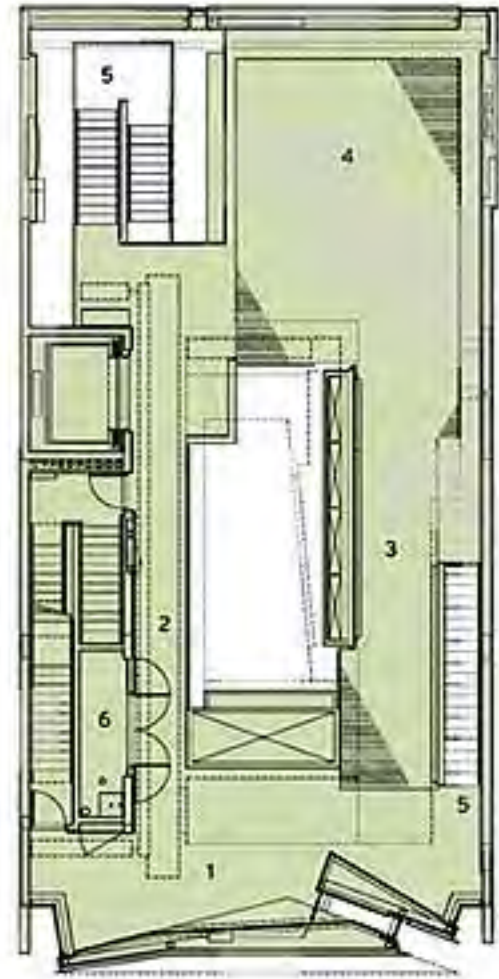
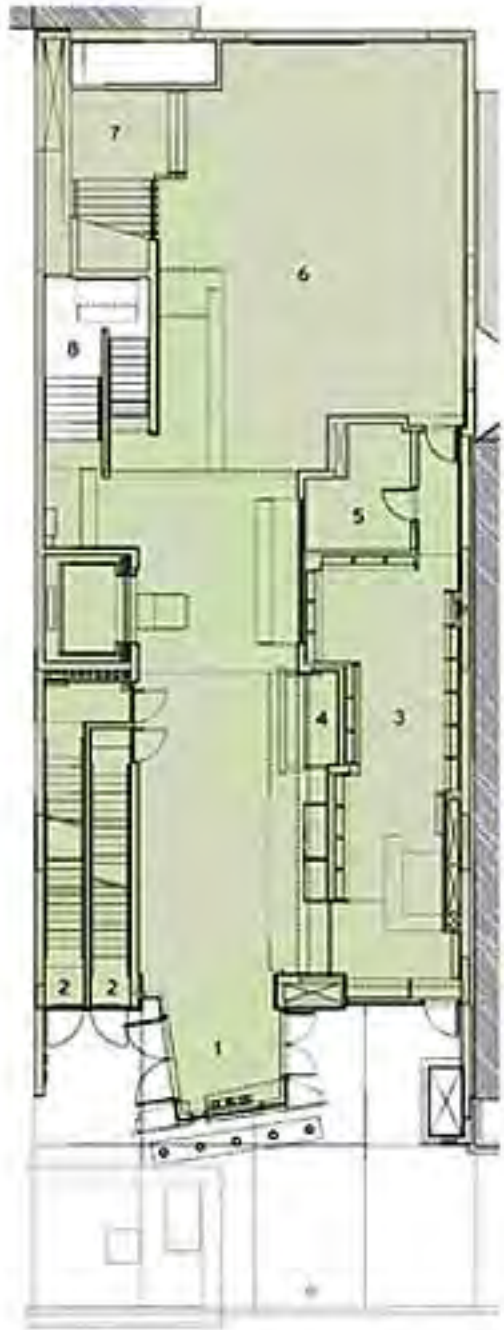


American Folk Art Museum

Architecture in
80'

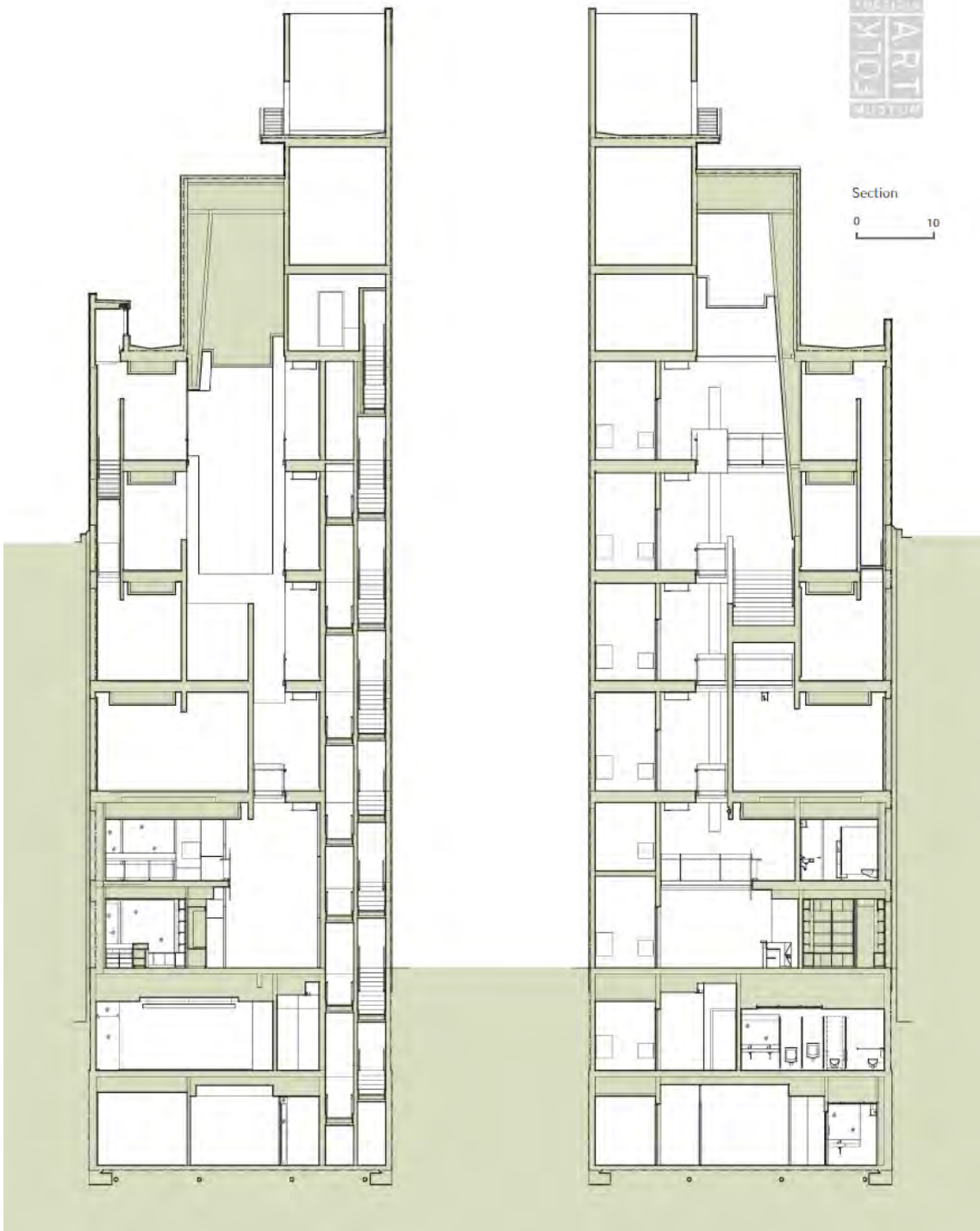
Williams and Tsien 2001





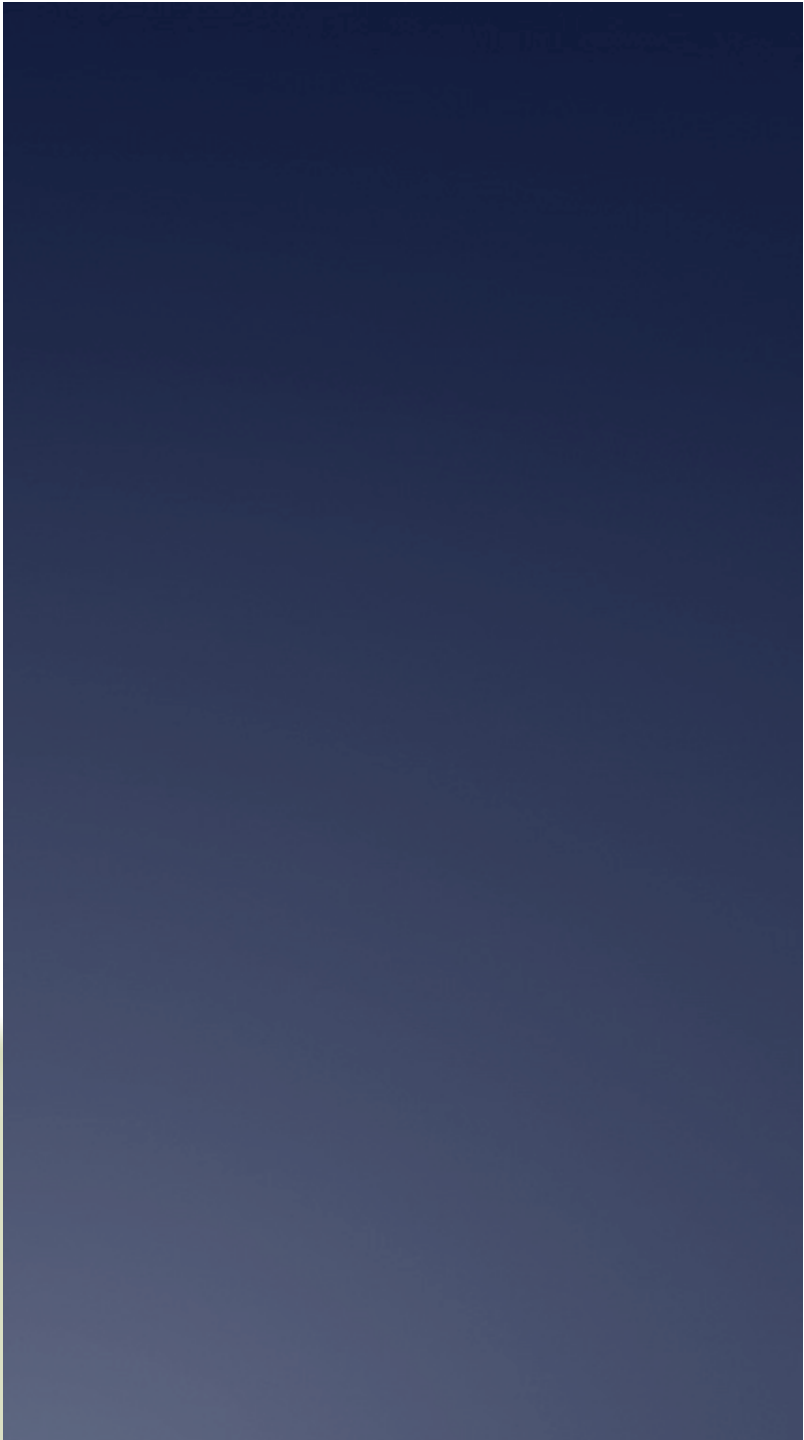
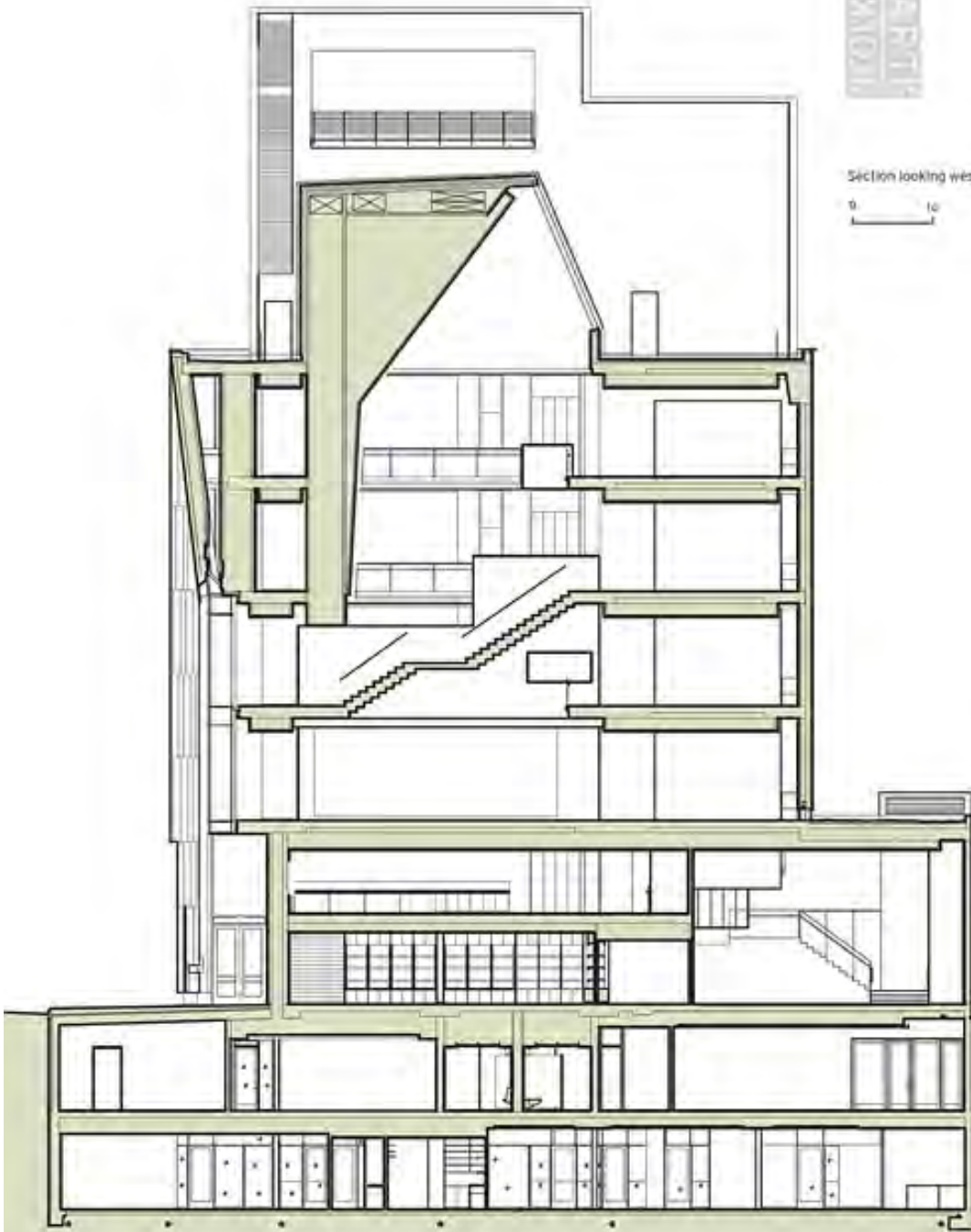
Section

0 10



ARTI
LABOR

Section looking west







Tombasil (white bronze)

A cast material, more often used
in Marine Applications

Distinctively used by Tod Williams
and Billie Tsien in the American
Folk Art Museum, NYC













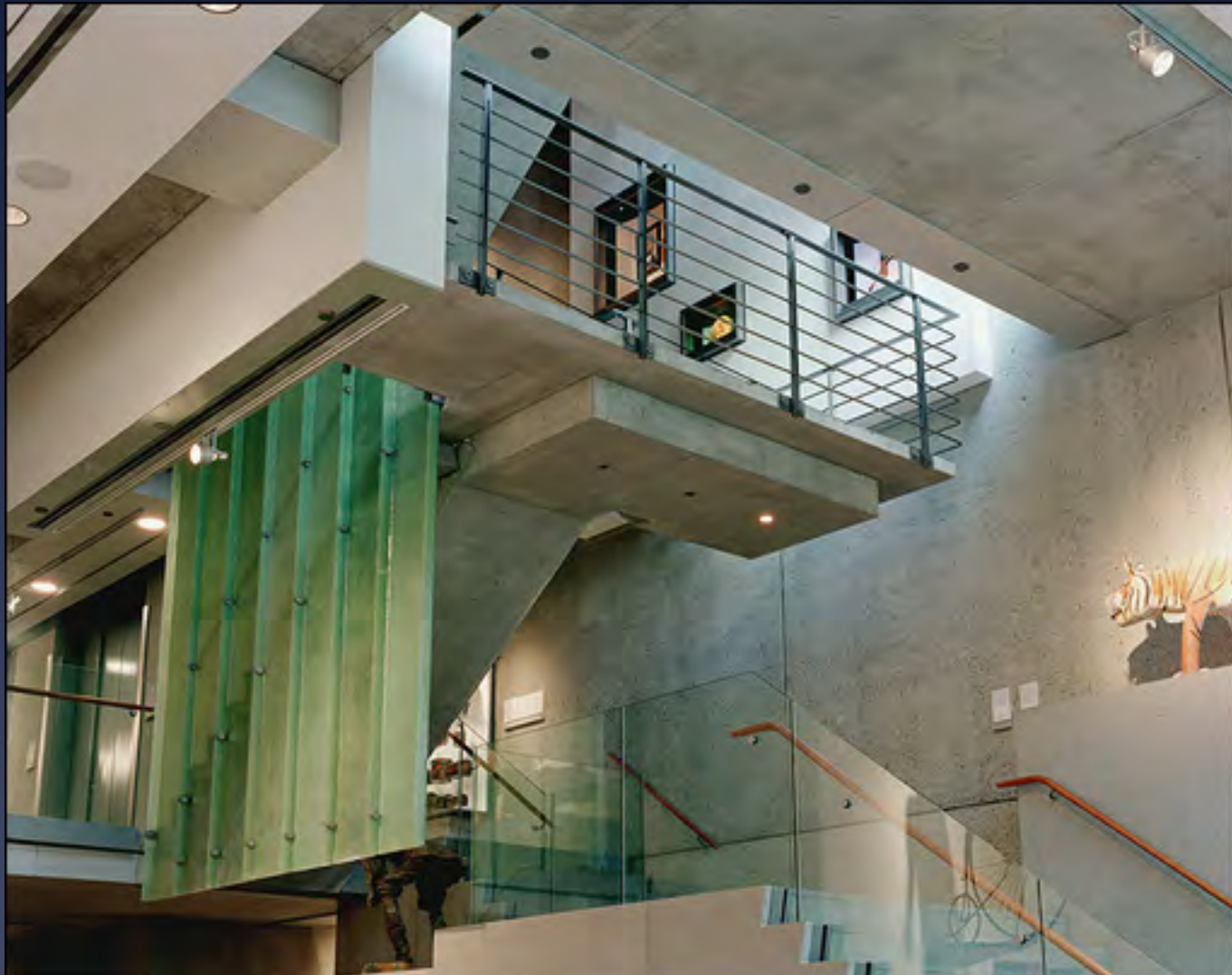






Steel studs over bituthene covered plywood, ready to receive cast bronze panels







Corrugated fiberglass



Spill casting: pouring bronze on foundry floor gave the distinctive surface variation for the Tombasil panels



